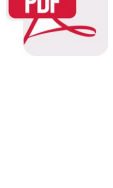


Home > Lighting > On-camera

# S-2070 | COB LED On-camera Light



- > Chip on board COB LED technology
- > 13W, 1100Lux @ 1 meter, dimmerable
- > 70W equivalent output
- > Single shadow, glareless
- > 60° wide beam angle, equally spread
- > Cool touch
- > 5000K color temperature
- > 5600K and 3200K filter
- > Color rendering index: 85
- > 6-17V wide input voltage
- > Interchangeable DV mount and battery
- > Glass Fiber strong and durable housing
- > Screw and cold shoe mount

MSRP Ex TAX / Shipping

Features | Specifications | Download | What's in box | Optional accessory | Related

## Chip-on-board LED

Brighter and Non-glaring

The S-2070 on-camera LED light adopts the new generation Chip-on-board LED, which integrates the LEDs into a chip with high brightness output but in smaller size, and the most remarkable, it offers a equally spread, soft, glareless light, similar to the traditional Halogen bulb light.



## 13W Light Output, 70W Equivalent

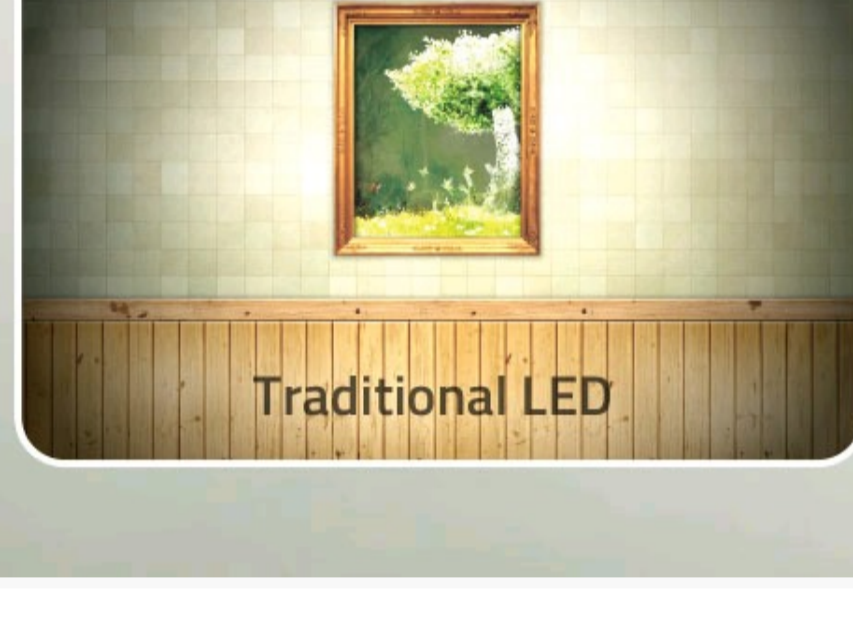
1100Lux @1 meter distance and 1 meter scale

S-2070 requires only 13W power consumption but can output bright light equivalents to an 70W halogen bulb. The illuminance is 1100 Lux at 1 meter distance and 1 meter scale.

## 60° Wider Beam Angle

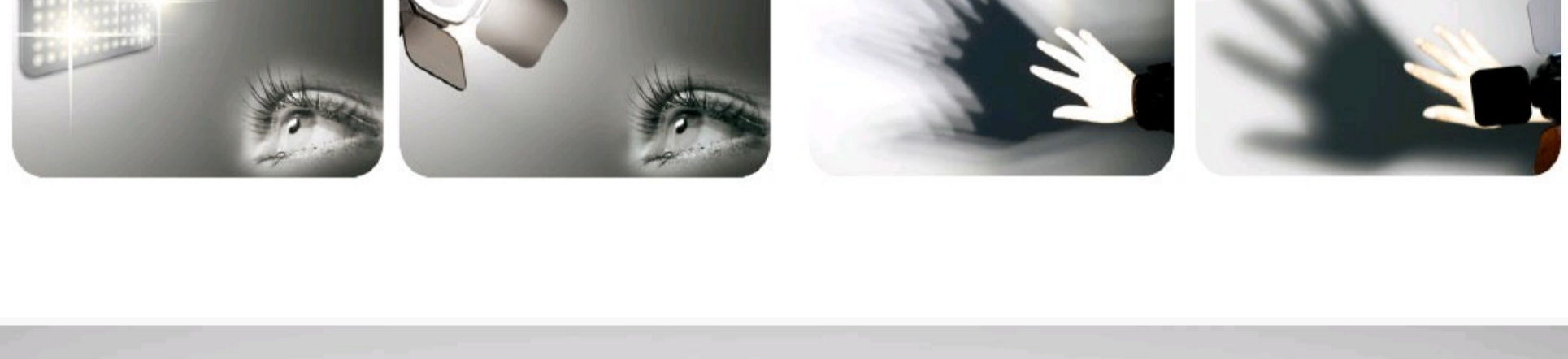
Equally spread lights, no visible beam edge

The traditional LED lights use lens to converge and get a higher brightness, but dropped down quickly around, which will generate a visible lighting border in the image. In comparison, the COB LED generates a wider beam angle, equally spread from the center to edge, and suitable for HD shooting.



## Glareless light, Single Shadow

The traditional LED array always generates several highlight pots on retina and people will feel glaring, even can't recover sight until a few seconds. In comparison, the SWIT COB LED has only one bulb in appearance, and output a non-glaring, single shadow light, suitable for close interview shooting.



## 3200K/5000K/5600K Color Temperature

The S-2070 LED has 5000K color temperature and also equipped with a 5600K (Daylight) and a 3200K (Tungsten) color temperature filter. You can switch the color temperature easily.



## 6-17V Wide Voltage Power Supply

The S-2070 accepts 6-17V wide voltage input, so you can get power from 14.4V V-mount/Gold Mount batteries or 7.2V DV batteries. The light package goes with a D-tap to pole-tap cable (S-7104), to plug into the DC-IN port of S-2070 and get power from D-tap power output sockets, such as batteries, battery plates, or camera handle. You can also select SWIT pole-tap to pole-tap DC cable (S-7108) to get power from pole-tap DC adaptors. By installing a particular DV battery plate, you can directly mount a 7.2V DV battery onto the rear of the S-2070 light.



## Interchangeable DV plates

You can power the S-2070 by most popular DV batteries, via the easy interchangeable DV battery plates. We supply the following DV plates for optional:

S-7004F	SONY NP-F970/770
S-7004U	SONY BP-U60/U30
S-7004D	Panasonic CGA-D54/D28, VW-VBD58, AG-VBR59
S-7004B	Panasonic VW-VBG6
S-7004J	JVC BN-V428U
S-7004V	JVC BN-VF823
S-7004I	SSL-JVC50
S-7004C	Canon BP-945/970G
S-7004E	Canon LP-E6



## Dimmer control

S-2070 has a dimmer controller to adjust the light output from 10%- 100%. The color temperature will not change during the dimmer controlling.

## Easy Installation

Both cold-shoe and screw

S-2070 offers a dual purpose installation base, that can be fixed to camera via both cold shoe and 1/4" screw head.





# Chip Array LED On-camera Light S-2070



## Introduction:

S-2070 is a new light of SWIT Chip Array LED family, with smaller size and lower consumption for hand HD camcorders. The power consumption is only 13W but can output bright light equivalents to 70W halogen bulb. The illuminance is 1100 Lux at 1 meter distance and 10%-100% dimmable.

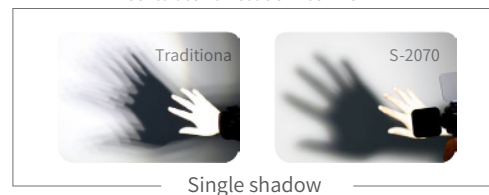
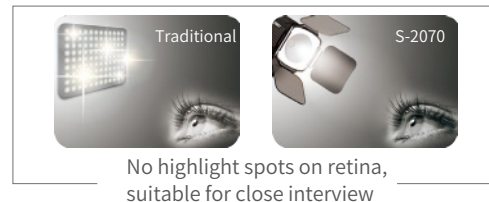
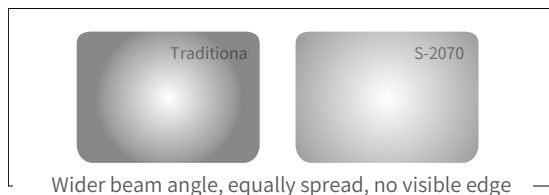
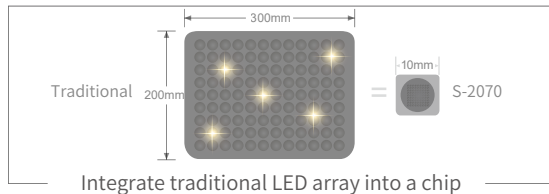
S-2070 adopts various power input design, supports DC input from camera battery, attached with all kinds of DV batteries by snap-on battery plate, or power by special slim battery S-8040.

S-2070 can be installed on camera by both cold shoe and 1/4" thread.

## Features:

- ◆ New generation Chip Array LED
- ◆ Bright but soft light, glareless
- ◆ Single shadow
- ◆ Equivalent to 70W halogen
- ◆ 1100 L x @ 1 metre
- ◆ 5600K / 3200K switchable with filter
- ◆ Colour rendering index: 85
- ◆ 6-17V wide voltage range
- ◆ D-tap power
- ◆ Interchangeable DV mounts
- ◆ Special compact battery S-8040
- ◆ Cool-touch cover
- ◆ Dimmable
- ◆ Cold shoe / screw connection

## Advantages of Chip Array LED:



## Multi Power Supply

① By special Li-ion battery S-8040



### S-8040

Rechargeable Li-ion battery  
Specially designed, slim and compact  
7.2V, 21Wh, Approx run time: 1.5 hours  
4-level power indicator  
(optional purchase)

② By standard DV batteries (via S-7004 quick interchangeable DV plate)



S-7004F	SONY NP-970
S-7004D	Panasonic D54S VW-VBD58
S-7004J	JVC BN-V428U
S-7004C	Canon BP-945
S-7004U	SONY BP-U60
S-7004E	Canon DSLR LP-E6
S-7004B	Panasonic VW-VBG6
S-7004V	JVC BN-VF823
S-7004I	JVC SSL-JVC50

③ By D-tap DC power cable



14.4V D-tap power input

## Specifications:

Input voltage	DC 6V-17V
Power consumption	13W
Equivalent	70W halogen
Beam angle	Approx. 60°
Color temperature	5000K and 5600K/3200K switchable
Color rendering index	85
Illuminance	1100Lx @ 1m distance and 1m diameter scale
Power connector	D-tap cable, DV mount connection
Weight	274g
Dimension	108×80×133mm

**SWIT Electronics Co., Ltd.**

Website: [www.swit.cc](http://www.swit.cc)  
Email: [contact@swit.cc](mailto:contact@swit.cc)  
Tel: +86 25 85805753  
Fax: +86 25 85805296

**Distributed by:**







