

S-1093F | 9-inch Full HD Reference LCD Monitor



- > 9" IPS LCD, 1920x1200, H/V 170° viewing
- > Build-in LCD protective glass
- > 2K/3G/HD/SD-SDI, HDMI, CVBS monitoring
- > 16-ch Embedded audio meters with alert
- > Select any 2 audio channels to output
- > Waveform Y/Cb/Cr/R/G/B and single line
- > Vector scope, histogram R/G/B/Y
- > AFD, H/V delay, R/G/B/Mono, False color
- > TSL UMD and text TALLY display
- > Zebra stripes, Peaking focus assist
- > SDI timecode display
- > Marker 4:3, 13:9, 14:9, 15:9, 1.85:1, 2.35:1

MSRP Ex TAX / Shipping

Features Specifications Download What's in box Optional accessory Related

9-inch Full HD LCD

IPS panel with LED backlight

The S-1093F adopts a 9-inch IPS (In-Plane Switching) LCD panel, with Full HD 1920x1200 resolution and LED backlight, 1000:1 contrast. The viewing angle is Horizontal: 170° / Vertical: 170°



LCD Protective Glass

The LCD of S-1093F is overlaid with a glass, protects the screen against scratch or broken.



Input/Output Interfaces

SDI / HDMI / CVBS / Analog Audio

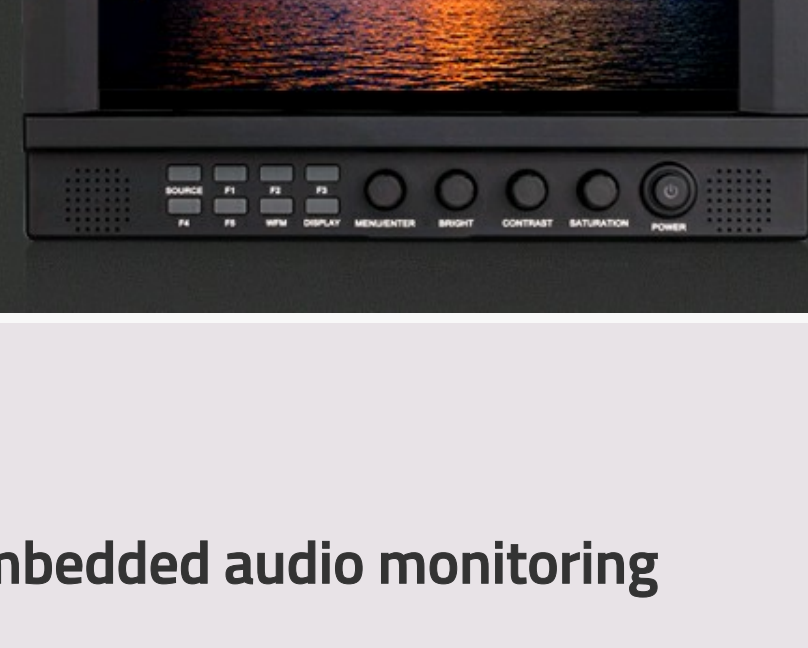
- S-1093F monitor supports:
- 2K/3G/HD/SD-SDI input x 2
- 2K/3G/HD/SD-SDI loop output x 2
- HDMI input x 1
- HDMI loop output x 1
- CVBS input x 1
- CVBS loop output x 1
- 3.5mm analog audio input x 1
- 3.5mm analog audio output x 1



Video Analysis Assistant Pattern

Waveform / Vector scope / Histogram

S-1093F supports video analysis assistant patterns includes: Waveform (Y/Pb/Pr/R/G/B), Vector scope, Histogram (R/G/B/Y), to convert the digital video quality info (Luma, Color, Saturation, etc) to patterns, and the patterns can be switched on/off individually, select display position (Up/Down/Left/Right), size, color, and translucence.



Embedded audio monitoring

Up to 16-ch meters with alert and select output

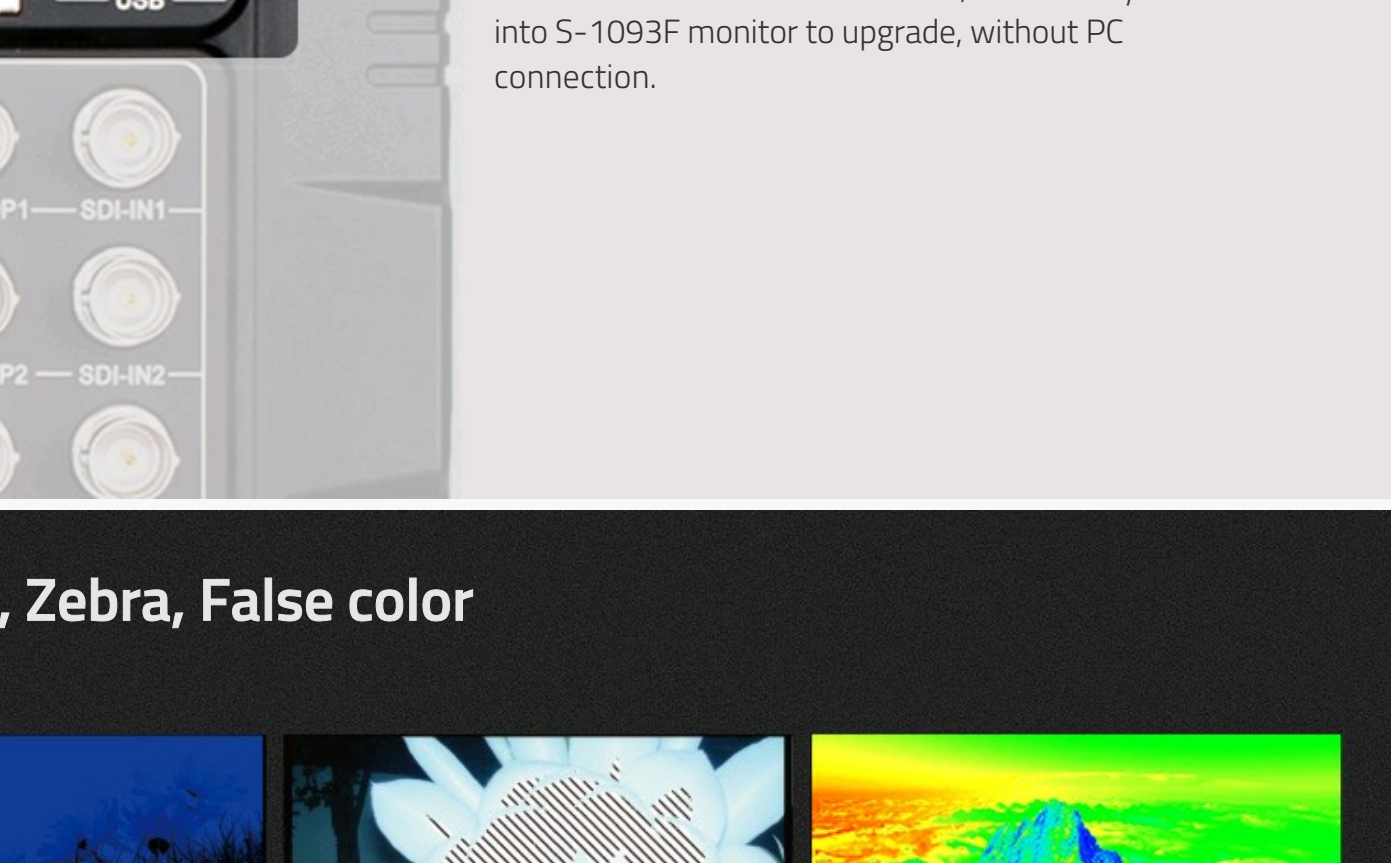
S-1093F supports SDI-16ch and HDMI-8ch embedded audio meters display, with marks and audio abnormal alert info. Users can also select any 2 channels audio to output via 3.5mm socket or speakers. The audio meter pattern position can be selected from one of four corners, and you can select to display only 2 channels, 8 channels, and full 16 channels. Also scale markers, alert info, and translucent of the audio meter pattern are selectable.



UMD and Text-Tally Display

TSL 3.1 / 4.0 Protocol

S-1093F supports UMD and Text-Tally display of TSL 3.1/4.0 protocol, with 1-126 TSL address selection, and Max 8 letters displayed. The UMD/TALLY signal inputs via RJ45(RS485) port on the rear panel of the monitor.

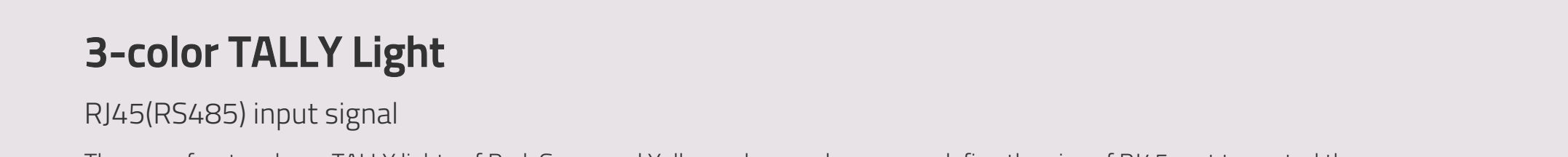
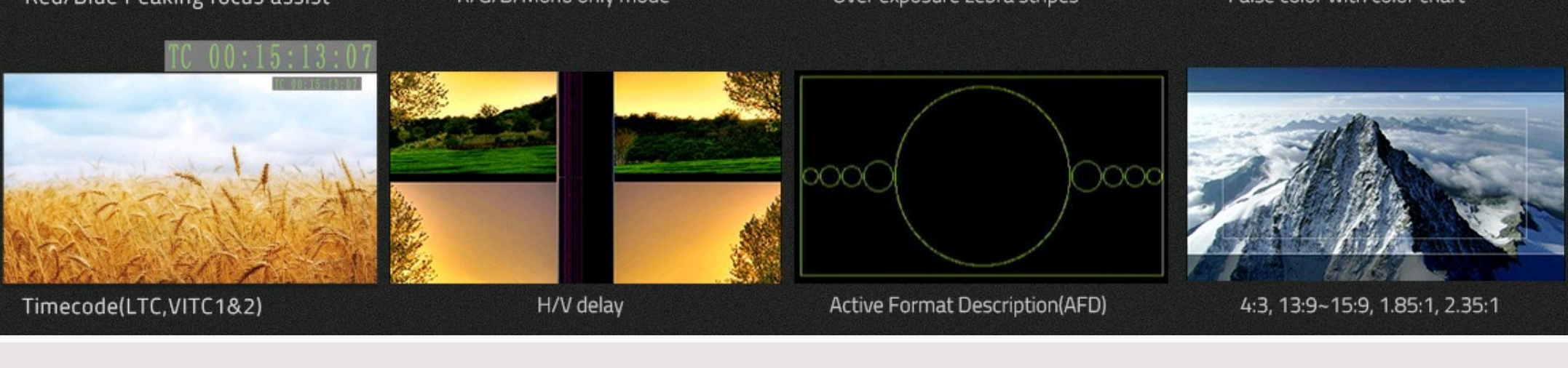


USB Firmware Upgrade

The monitor provides a standard USB port on the rear panel, for firmware upgrade. Users can download the latest firmware file to a USB stick, and directly insert into S-1093F monitor to upgrade, without PC connection.



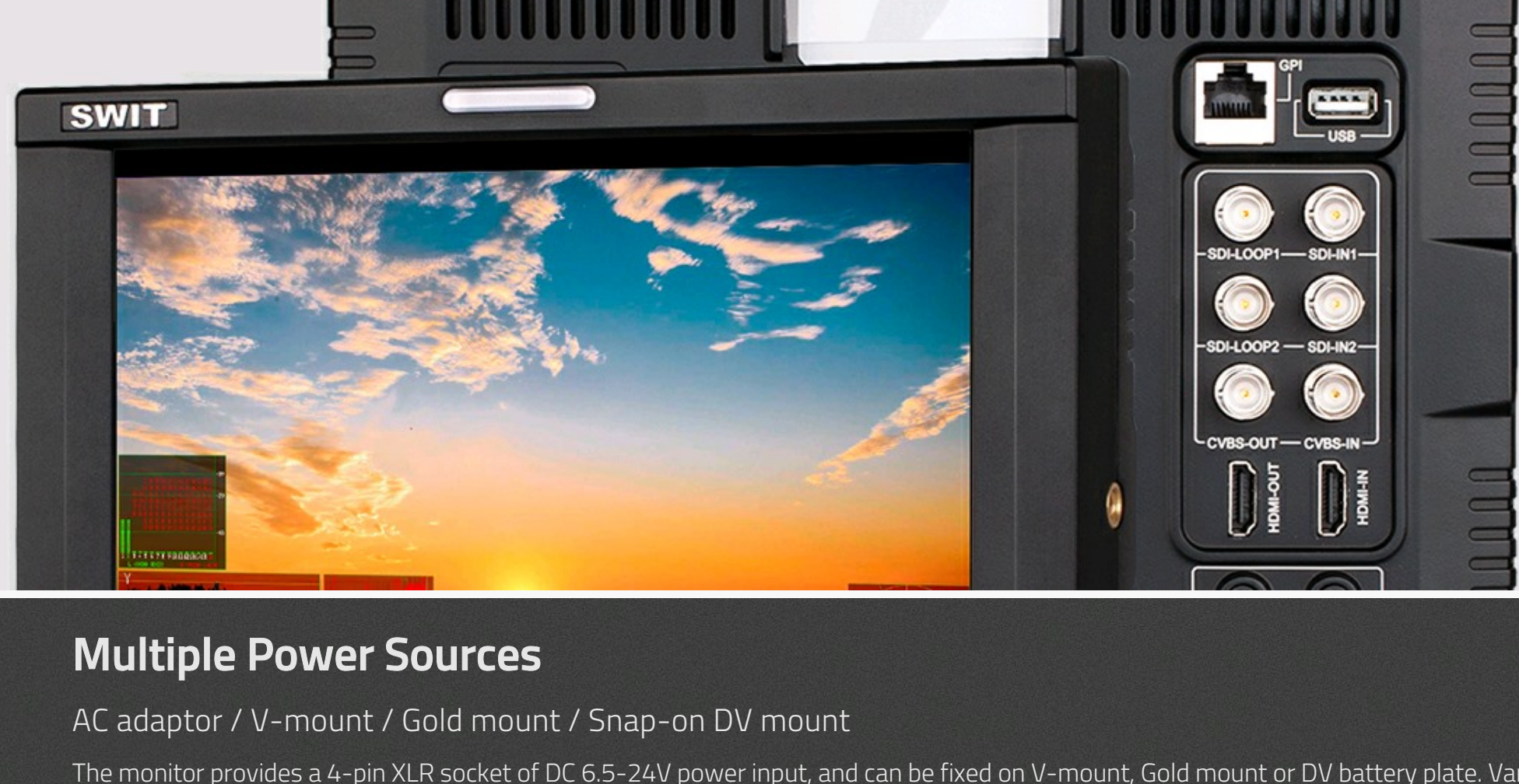
Peaking, R/G/B/Mono only, Zebra, False color



3-color TALLY Light

RJ45(RS485) input signal

There are front and rear TALLY lights of Red, Green and Yellow colors, and users can define the pins of RJ45 port to control the TALLY lights.



Multiple Power Sources

AC adaptor / V-mount / Gold mount / Snap-on DV mount

The monitor provides a 4-pin XLR socket of DC 6.5-24V power input, and can be fixed on V-mount, Gold mount or DV battery plate. Various types of DV battery plates are provided for optional, with snap-on designed, quick released and interchangeable with each other. There're following DV plates for selection:



Plate	Compatible batteries
S-7004A	Gold mount batteries
S-7004S	V-mount batteries
S-7004F	SONY NP-F970/770
S-7004U	SONY BP-U60/U30
S-7004D	Panasonic D54/D28
S-7004B	Panasonic VW-VBD58, AG-VBR59
S-7004V	Panasonic VW-VBG6
S-7004I	JVC BN-VF823
S-7004L	SSL-JVC50
S-7004C	Canon BP-945/970G
S-7004E	Canon LP-E6



Sun Hood

For outdoor using, you can apply a sun hood on the monitor. The sun hood can be easily installed via the left and right screw threads, or directly by Velcro tapes. The sun hood is provided in the monitor package.

SWIT Electronics Europe GmbH

Heerdterbuschstrasse 10 / HALLE 9,
41460 Neuss, NRW Germany
VAT: DE308323924
WEEE-Reg.-Nr. DE 37399843
Email: info@swit-europe.com

Email Newsletter

Please enter Email address below and subscribe our newsletters.

Privacy Policy

leave a message

SWIT®



S-1093F 9" Full HD Broadcast LCD Monitor

■ Features

- ◆ 9" IPS LCD, 1920 × 1200, H/V 170° viewing
- ◆ Build-in LCD protective glass
- ◆ 2K/3G/HD/SD-SDI, HDMI, CVBS monitoring
- ◆ 16-ch Embedded audio meters with alert
- ◆ Select any 2 audio channels to output
- ◆ Waveform Y/Cb/Cr/R/G/B and single line
- ◆ Vector scope, histogram R/G/B/Y
- ◆ AFD, H/V delay, R/G/B/Mono, False color
- ◆ TSL UMD and text TALLY display
- ◆ Zebra stripes, Peaking focus assist
- ◆ SDI timecode display
- ◆ Marker 4:3, 13:9, 14:9, 15:9, 1.85:1, 2.35:1
- ◆ Front / Rear TALLY light and GPI control
- ◆ V-mount, Gold mount or snap-on DV mount
- ◆ USB firmware upgrade

■ Simple package includes



Sun hood



Articulating arm
1/4" or cold shoe



4-pin XLR
power adaptor



V-mount / Gold mount /
DV mount optional

■ Luxury package has additional



Carrying case



D-tap to 4-pin XLR
DC cable



U shape desktop stand

■ Specification

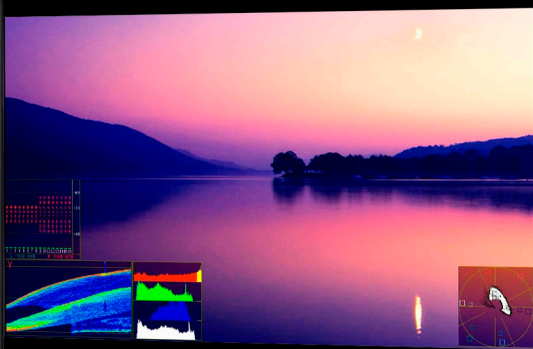
LCD Performance		
Size	9 inches	
Display area	191.5 × 119.7 mm	
Resolution	1920 × 1200	
Color	8 bit	
Aspect ratio	16:9 (4:3 adjustable)	
Brightness	450 cd/m ²	
Contrast	1000:1	
Viewing Angle	H/V:170° / 170°	
Input/output		
Input	BNC × 2	2K/3G/HD/SD-SDI input × 2
	BNC × 1	CVBS input
	HDMI-A × 1	HDMI input
	GPI × 1	UMD, GPI × 1
Output	3.5mm × 1	analog audio input
	BNC × 2	2K/3G/HD/SD-SDI loop output × 2
	BNC × 1	CVBS loop output
	HDMI-A × 1	HDMI loop output
	3.5mm × 1	SDI/HDMI/analog audio output
Video Format		
SDI	SMPTE-2048-2	2048 × 1080p (23.98 / 24 / 25 / 29.97 / 30 / 50 / 59.94 / 60)
		2048 × 1080i (50 / 59.94 / 60)
	SMPTE-425M-A/B	1080p (60 / 59.94 / 50)
		1080i (60 / 59.94 / 50)
	SMPTE-274M	1080p (30 / 29.97 / 25 / 24 / 23.98)
	SMPTE-RP211	1080psf (30 / 29.97 / 25 / 24 / 23.98)
	SMPTE-296M	720p (60 / 59.94 / 50)
HDMI	SMPTE-125M	480i (59.94)
	ITU-R BT.656	576i (50)
	CVBS	480i / 576i / 480p / 576p
1080i (60 / 59.94 / 50)		
720p (60 / 59.94 / 50)		
1080p (60 / 59.94 / 50 / 30 / 29.97 / 25 / 24 / 23.98)		
	1080psf (30 / 29.97 / 25 / 24 / 23.98)	
CVBS	NTSC / PAL	
General		
Input voltage	DC 6.5V-24V	
Power consumption	18W	
Working temperature	0°C ~ +40°C	
Working humidity	10% ~ 90%	
Storage temperature	- 15°C ~ + 60°C	
Storage humidity	10% ~ 90%	
Dimensions	241 × 178 × 50mm	
Net weight (main body)	960g	

Distributed by:

SWIT Electronics Co., Ltd.

Website: www.swit.cc Tel: +86 25 85805753
Email: contact@swit.cc Fax: +86 25 85805296

SWIT



SOURCE F1 F2 F3
F4 F5 WFM DISPLAY MENU/ENTER BRIGHT CONTRAST SATURATION POWER

LT RT MTR DISPLAY MENU/ENTER BRIGHT CONTRAST SATURATION POWER



SWIT®

8.9-inch 3GSDI&HDMI
LCD Monitor

Model: S-1093F

LCD Size: 8.9"

Resolution: 1920x1200

Power Consumption: ≤18W

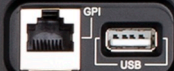


SWIT Electronics Co., Ltd.
www.swit.cc

VF-IN

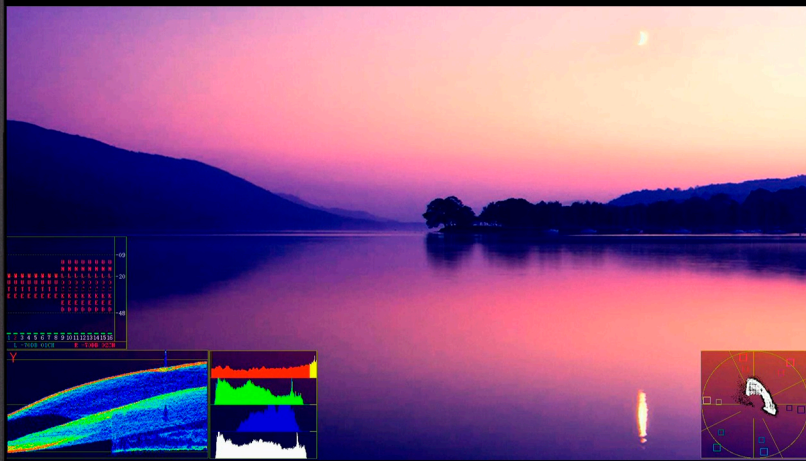


SN 00060081



1800600081

SWIT



- SOURCE
- F1
- F2
- F3
- F4
- F5
- WFM
- DISPLAY
- MENU/ENTER
- BRIGHT
- CONTRAST
- SATURATION
- POWER

L1 L2 MTR DISPLAY MENU/ENTER BRIGHT CONTRAST SATURATION POWER