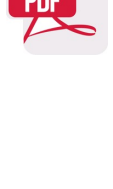
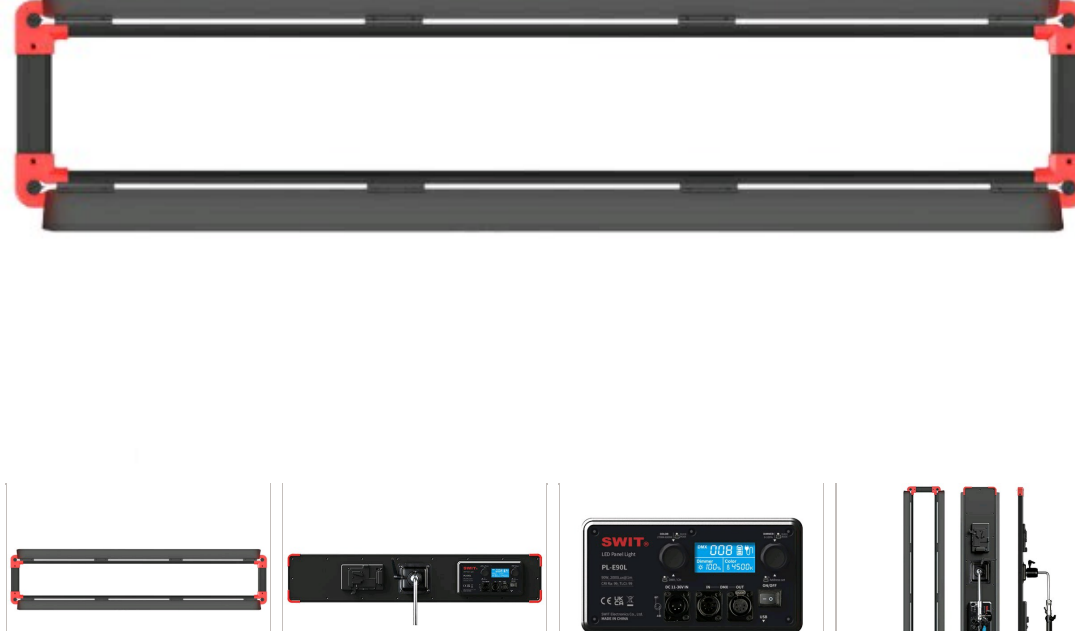


PL-E90L | 90W Bi-color Long Ratio LED Panel



- > 0.5x3 feet long ratio panel light
- > 480pcs edge mounted SMD-LEDs
- > Unique 90° light guide technology
- > 90W power, 2000Lux @ 1meter
- > 0-100% flick-free dimming
- > 2700K-6500K continuously adjustable
- > CRI Ra 99, TLCI 99
- > DMX512 control and interaction control
- > USB power out for wireless DMX receiver
- > LCD display color, dimmer, DMX and battery info
- > DC 11-36V wide input voltage
- > Power by V-mount or Gold mount battery
- > With 2-leaf metal barn doors
- > Provide portable 3-light interview kit



MSRP Ex TAX / Shipping

Features | Specifications | Download | What's in box | Optional accessory | Related

90W Long Ratio LED Panel

PL-E90L is a 0.5x3 feet size long aspect ratio light for soft vertical lighting of people. The PL-E family slim size is portable for interview kit application.



21mm Slim Size

Side Mounted SMD-LED

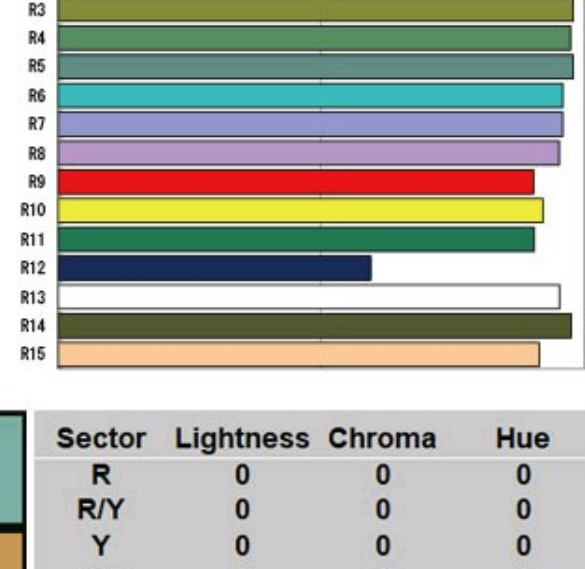
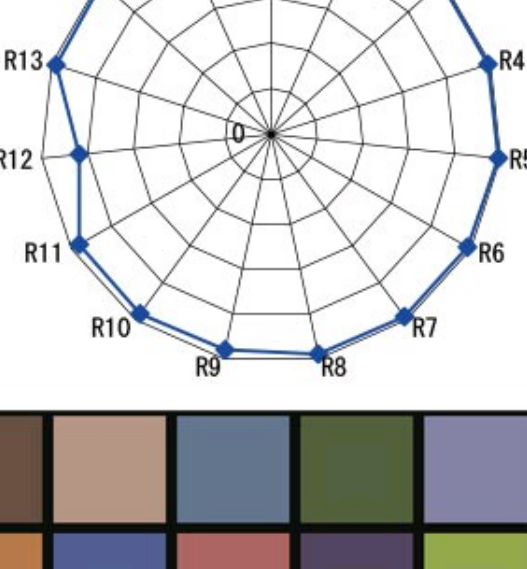
PL-E90L has SMD-LEDs side mounted on the inner edge of the frame, and with SWIT innovative laser dots 90° reflection board, the light outputs high efficient bright, soft and even beam to wrap around objects.

The side mounted LEDs greatly reduce the light thickness. It's only 21mm, slim and portable for field application.

90W, 2000 Lux @ 1 meter

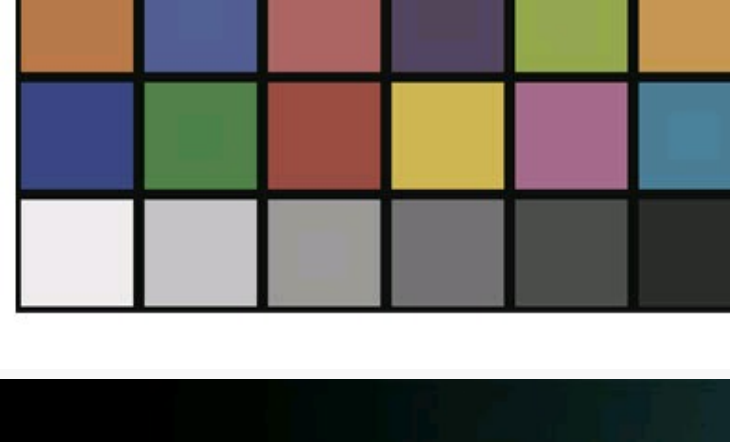
2700K-6500K Continuously Adjust

PL-E90L mixed with 90W 2700K LEDs and 90W 6500K LEDs, outputs 90W 2200Lux at 1 meter high intensity and any color temperature between 2700K to 6500K, supports 0 to 100% PWM digital dimming, smoothly and non-flickering.



CRI 99, TLCI 99

PL-E90L adopts high end surface mounted LEDs with super high Color Rendering Index (CRI) Ra 99, and Television Lighting Consistency Index (TLCI) 99. Objects will keep their original colors exactly under the light.



| Sector | Lightness | Chroma | Hue |
|--------|-----------|--------|-----|
| R | 0 | 0 | 0 |
| R/Y | 0 | 0 | 0 |
| Y | 0 | 0 | 0 |
| Y/G | 0 | 0 | 0 |
| G | 0 | 0 | 0 |
| G/C | 0 | 0 | 0 |
| C | 0 | 0 | 0 |
| C/B | 0 | 0 | 0 |
| B | 0 | 0 | 0 |
| B/M | 0 | 0 | 0 |
| M | 0 | 0 | 0 |
| M/R | 0 | 0 | 0 |

Control Panel

The rear control panel supports DMX512 in and out, USB power out for wireless DMX adaptor, DC 11-36V wide input. The LCD screen displays dimmer, color temperature, DMX address and power status.



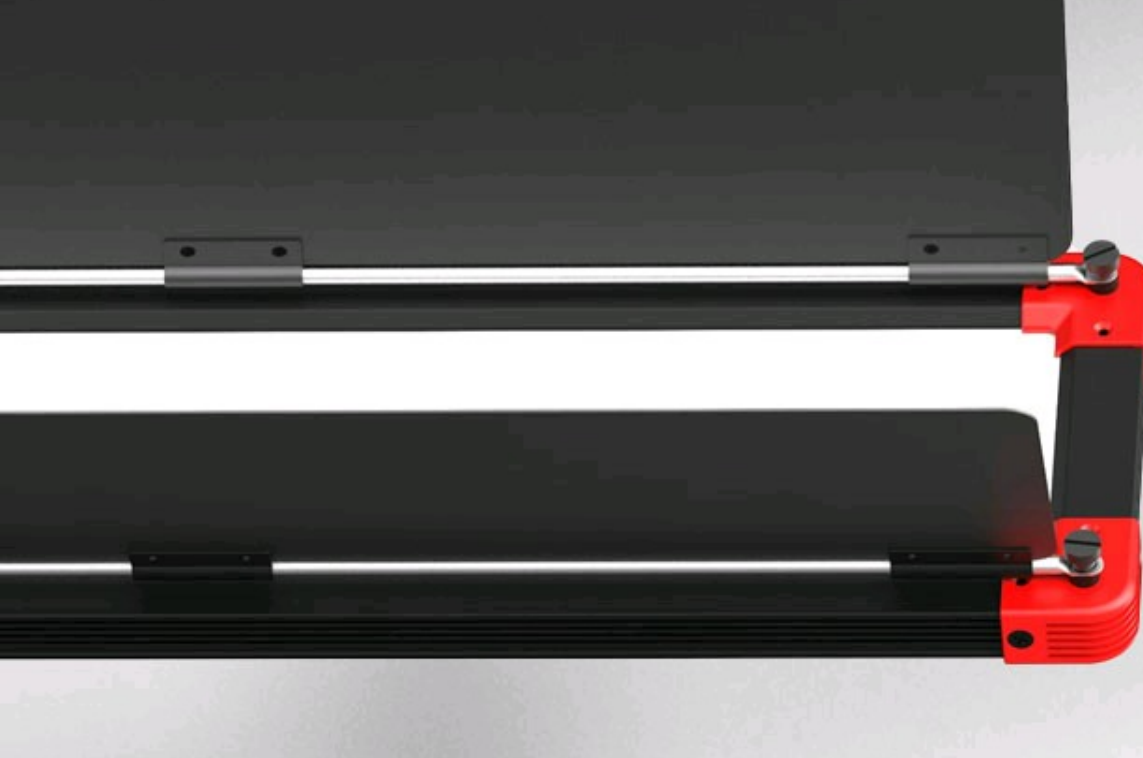
Rotatable Lighting Angle

PL-E90L provides a light stand connector with 360° rotatable and 180° tiltable.



2-leaf Barn Doors

PL-E90L installed with 2-leaf metal barn doors and also could be removed easily by 4 screws.



Single Light Package

- The single light package includes:
- 1x PL-E90L light with barndoor
- 1x Light stand connector
- 1x AC-DC adaptor
- 1x Carrying bag



3-Light Kit Package

- The 3-light kit package includes:
- 3x PL-E90L lights with barndoor
- 3x Light stand connectors
- 3x AC-DC adaptors
- 3x Light stands
- 1x Trolley case



SWIT Electronics Europe GmbH

Heerdterbuschstrasse 10 / HALLE 9,
41460 Neuss, NRW Germany
VAT: DE308323924
WEEE-Reg.-Nr. DE 37399843
Email: info@swit-europe.com

Email Newsletter

Please enter Email address below and subscribe our newsletters.

[Privacy Policy](#)

leave a message

SWIT

90W Ultra Slim Strip Panel LED

PL-E90L

0.5×3' Size Slim Strip Light

PL-E90L is a strip light with 0.5×3 feet size, and the edge mounted SMD LEDs make the light ultra slim of 21mm thickness only, solid and portable.



90W 2000Lux@1m

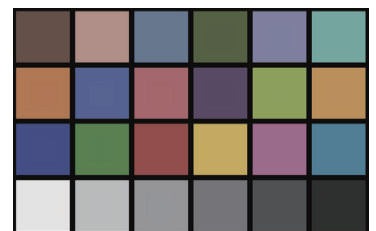
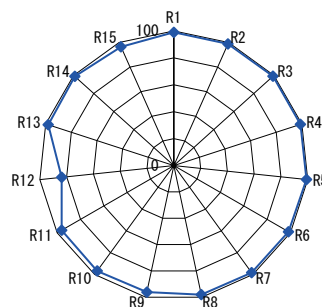
480pcs SMD-LEDs mounted in the inner edge of the light frame, and with SWIT unique 90° light guide technology, PL-E90L output 2000Lux @ 1 meter high intensity, soft and equally spread light.

2700K-6500K Adjustment

PL-E90L mixed with 90W 2700K and 90W 6500K SMD LEDs, continuously adjustable from 2700K to 6500K, 90W high intensity output at any color temperature.

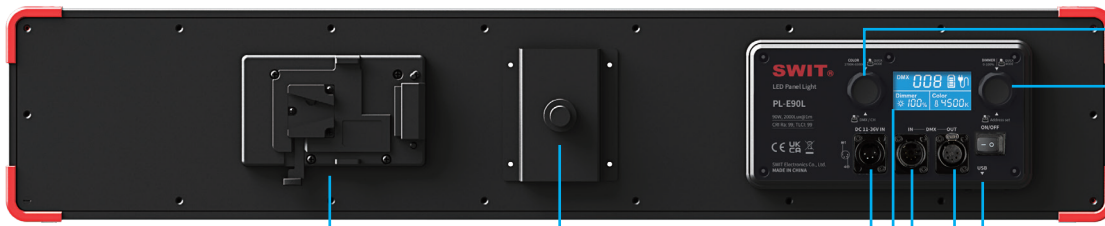
CRI 99; TLCI 99

PL-E90L adopts high consistency SMD LEDs and customized the phosphor formulation to raise R9 red color performance. Both Ra and TLCI reach 99, to keep the original color of the objects under the light.





Power and Control



COLOR TEMP 2700K-6500K

Short Press:
2700/3200/4500/5600/6500K
Directly quick switching
Long Press:
Console mode (DMX) or
Interactive mode (CH) switch

DIMMER 0-100%

Short Press:
10% step quick switching
Long Press:
Set DMX address

5-pin DMX512 IN & OUT

N=Dimmer; N+1=Color Temp

5V USB power output

To power wireless DMX adaptor

V-mount plate

Gold mount for option



Install Knob

Provide Rotatable
Light stand connector

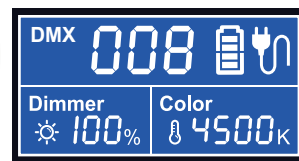


4-pin DC 11-36V IN

Provide AC-DC adaptor



Control Info Display



Single Light Package

- 1x PL-E90L light with barndoor
- 1x Rotatable Light stand connector
- 1x AC-DC adaptor
- 1x Carrying bag



3-Light Interview Kit

- 3x PL-E90L light with barndoor
- 3x Rotatable Light stand connector
- 3x Light stand
- 3x AC-DC adaptor
- 1x Trolley case for everything



Specifications

| Model | PL-E90L |
|---------------|-----------------|
| LEDs | 480pcs SMD LEDs |
| Color Temp | 2700K-6500K |
| Illuminance | 2000Lux @ 1m |
| Color Render | CRI 99; TLCI 99 |
| Input Voltage | DC 11-36V |
| Power | Max 90W |
| Net Weight | 4.9kg |

