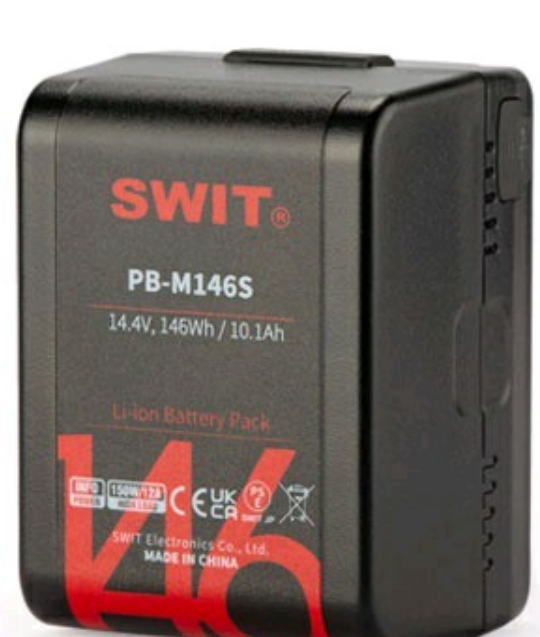


Home > Battery > V-mount

PB-M146S | 146Wh Pocket V-mount Battery Pack



- > Tiny V-mount battery, Pocket fit
- > 146Wh/10.1Ah fly-friendly capacity
- > 150W/12A constant high load
- > 1x D-tap output & charging input
- > 1x USB 5V/2A output
- > 5-step LED power indicator
- > Power info for both SONY & RED
- > Wire-Free internal technic
- > Multiple circuit protections



MSRP Ex TAX / Shipping

Features Specifications Download What's in box Optional accessory Related

Pocket V-mount battery

As a new member of PB-M series Pocket V-mount batteries, the PB-M146S provides 146Wh larger capacity to extend run time, and still tiny size for convenient carrying.



146Wh, D-tap and USB

PB-M146S has 14.4V nominal voltage, 146Wh large capacity, and 5-step LED power indicator, built-in D-tap DC output & charging input, and USB-A 5V/2A power out. The constant load is 150W, 12A.

Hot-Swap Adaptor

You can use 2x PB-M146S hot-swappable on cameras, by the Hot-swap Adaptor KA-M20S, to get one-by-one hot swap uninterrupted power, and equivalent to a standard size V-mount battery.



KA-M20S



50W/3A Fast Charging

PB-M146S can be charged by all standard V-mount chargers and D-tap chargers. The following chargers are recommended:

1. S-3822S, Portable 2-ch Simultaneous Charger
Charge 2x PB-M146S: Approx. 3hrs 45min
2. PC-U130B2, Ultra-Portable Dual D-tap head charger
Charge 1x PB-M146S: Approx. 3hrs 45min
Charge 2x PB-M146S: Approx. 6 hours



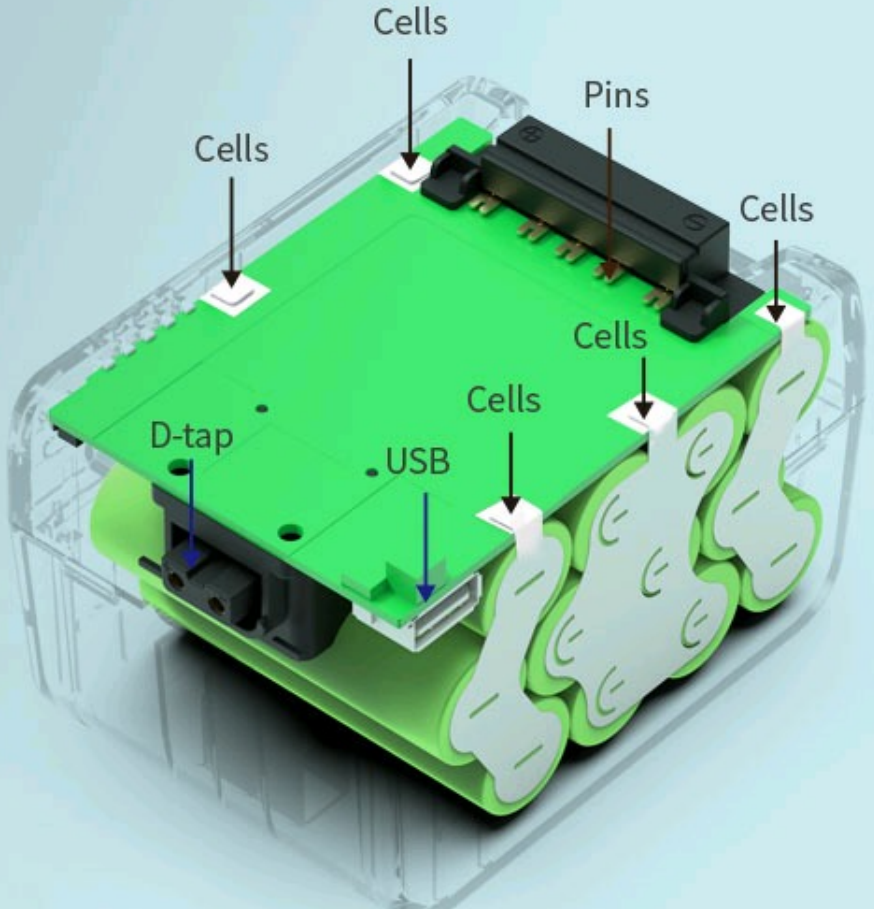
Family Models

The PB-M pocket V-mount series have 45Wh, 98Wh and 146Wh, with the same output sockets and the same bottom size but different thickness.



Wire-Free Internal Tech

PB-M146S has innovative "Wire-Free" internal technic. All the cells, D-tap, USB, power indicator devices are directly soldered onto PCB, no connecting wires, to reduce internal resistance effectively, and make the circuit stable, safe, and reliable.



SWIT Electronics Europe GmbH
 Heerdterbuschstrasse 10 / HALLE 9,
 41460 Neuss, NRW Germany
 VAT: DE308323924
 WEEE-Reg.-Nr. DE 37399843
 Email: info@swit-europe.com

Email Newsletter
 Please enter Email address below and subscribe our newsletters.

[Privacy Policy](#)

leave a message

SWIT®

Pocket V-mount

PB-M146S 146Wh



146Wh Large Capacity



- 14.4V 146Wh / 10.1Ah large capacity
- 100×74×63.7mm tiny size
- D-tap×1; USB-A×1
- 150W 12A constant high load

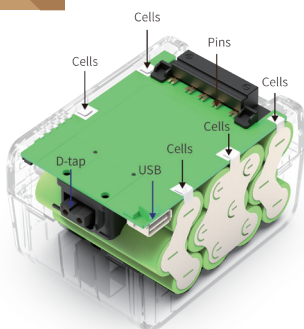


Dual Batteries Hot Swap

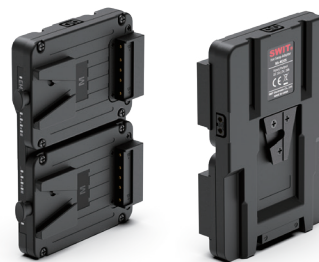
You can use 2x PB-M146S hot-swappable on cameras, by the Hot-swap Adaptor KA-M20S, to get one-by-one hot swap uninterrupted power, and equivalent to a standard size V-mount battery.



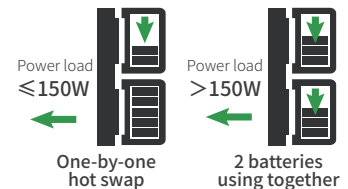
Wire-Free Internal Tech



PB-M series batteries have “Wire-Free” internal technic. All the cells, D-tap, USB, power indicator devices are directly soldered onto PCB, no connecting wires, to reduce internal resistance effectively, and make the circuit stable, safe, and reliable.



KA-M20S
Fit SWIT PB-M45S/98S/146S



- V-mount hot swap plate
- Fit 2x PB-M series batteries
- Hot swap status indicators
- SONY & RED display power info
- 2×D-tap power output

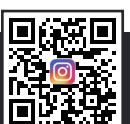
SWIT Electronics Co., Ltd.
+86-25-85805753
<http://www.swit.cc>
Email: contact@swit.cc

SWIT Electronics America, Inc
1-(408)260-8258
<http://www.switusa.com>
Email: info@swit.us

SWIT Electronics Europe GmbH
+49(0)21316632331
<http://www.switeu.com>
Email: info@swit-europe.com



Facebook Page



Instagram





SWIT®

PB-M146S

14.4V, 146Wh / 10.1Ah

Li-ion Battery Pack

INFO
POWER

150W/12A
HIGH LOAD

CE UK CA

PS E
SWIT JP



SWIT Electronics Co., Ltd.
MADE IN CHINA

146





SWIT®

PB-M146S

14.4V, 146Wh / 10.1Ah

Li-ion Battery Pack

INFO 150W/12A
POWER HIGH-LOAD

CE UKCA PS
SWIT-UP

SWIT Electronics Co., Ltd.
MADE IN CHINA

SWIT

SWIT®

PB-M146S

14.4V, 146Wh / 10.1Ah

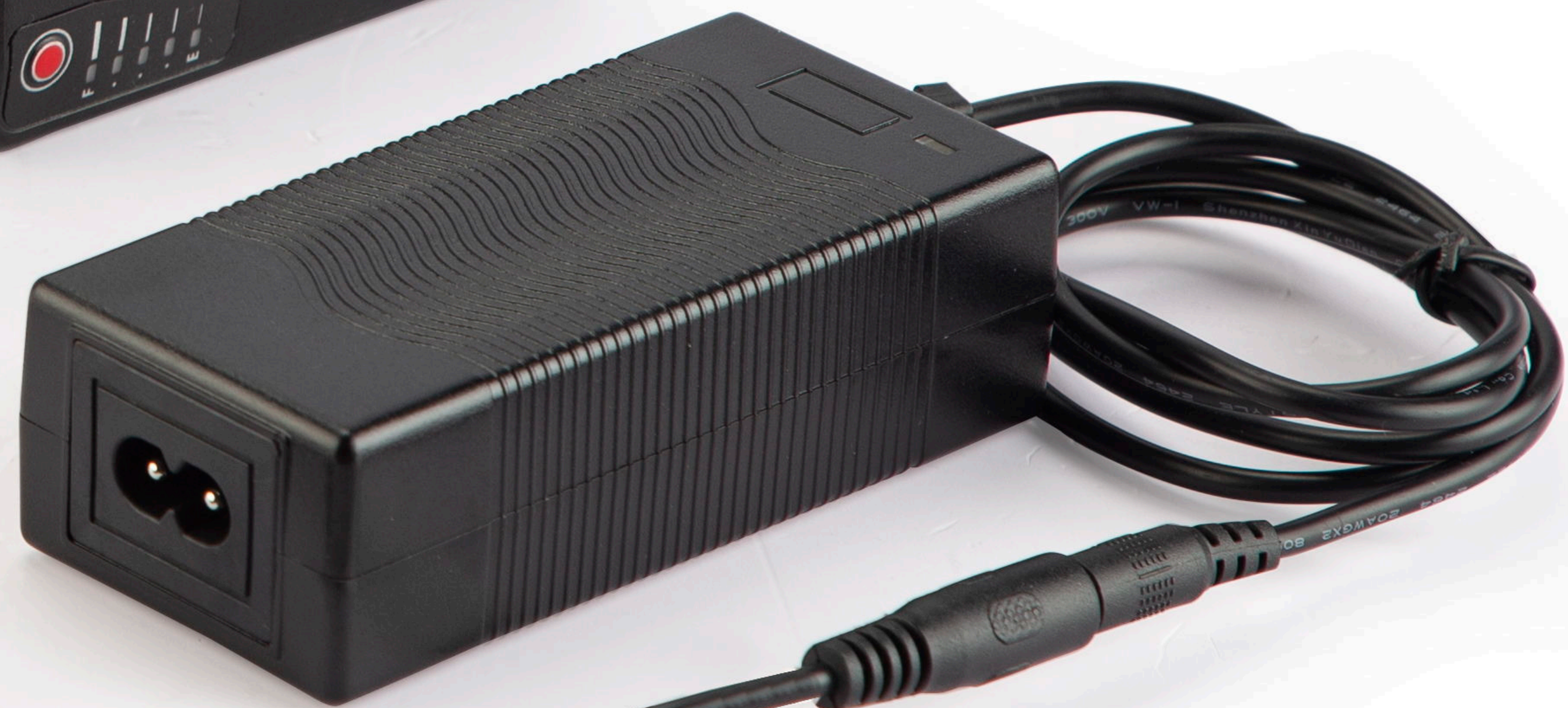
Li-ion Battery Pack

INFO 150W/12A
POWER HIGH-LOAD

CE UKCA PS
SWIT-UP

SWIT Electronics Co., Ltd.
MADE IN CHINA

SWIT





SWIT

MODEL:
S-3802S

L R

• 100%
• 80%
• 0%

DC OUT
MAX 50W
(13.8V-3.6A)

Remove batteries
to enable DC out

SWIT

PB-M146S
14.4V, 146Wh / 10.1Ah

Li-ion Battery Pack

CE UK RoHS
SWIT Electronics Co., Ltd.
MADE IN CHINA



SWIT®

PB-M146S

14.4V, 146Wh / 10.1Ah

Li-ion Battery Pack

INFO
POWER

150W/12A
HIGH LOAD

CE UK
CA

PS
E
SWIT JP



SWIT Electronics Co., Ltd.
MADE IN CHINA

146

