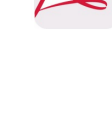
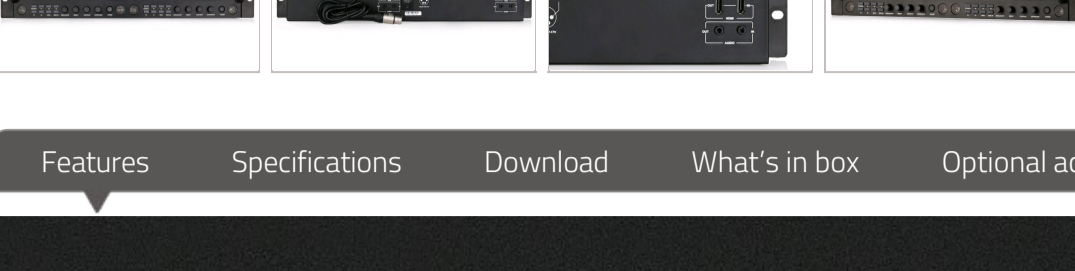


Home > Monitor > Rack Mount

# M-1093F | Dual 9-inch FHD Waveform Rack LCD Monitor



- > 9-inch IPS LCD Panel x2
- > 1920x1200 resolution, 1000:1 contrast
- > 19-inch 4U rack mounting, ±30° rotatable
- > 2K/3G/HD/SD-SDI, HDMI, CVBS monitoring
- > 16-ch Embedded audio meters with alert
- > Select any 2 audio channels to output
- > Waveform Y/Cb/Cr/R/G/B and single line
- > Vector scope, histogram R/G/B/Y
- > AFD, H/V delay, R/G/B/Mono, False color
- > TSL UMD and text TALLY display
- > Zebra stripes, Peaking focus assist
- > SDI timecode display
- > Marker 4:3, 13:9, 14:9, 15:9, 1.85:1, 2.35:1
- > TALLY light and GPI control
- > USB firmware upgrade



MSRP Ex.TAX / Shipping

Features Specifications Download What's in box Optional accessory Related

## 9-inch IPS LCD

IPS panel with LED backlight

The M-1093F adopts 2x 9-inch IPS (In-Plane Switching) LCD panels, with Full HD 1920x1200 resolution and LED backlight, 1000:1 contrast. The viewing angle is Horizontal: 170° / Vertical: 170°



## Input/Output Interfaces

SDI / HDMI / CVBS / Analog Audio

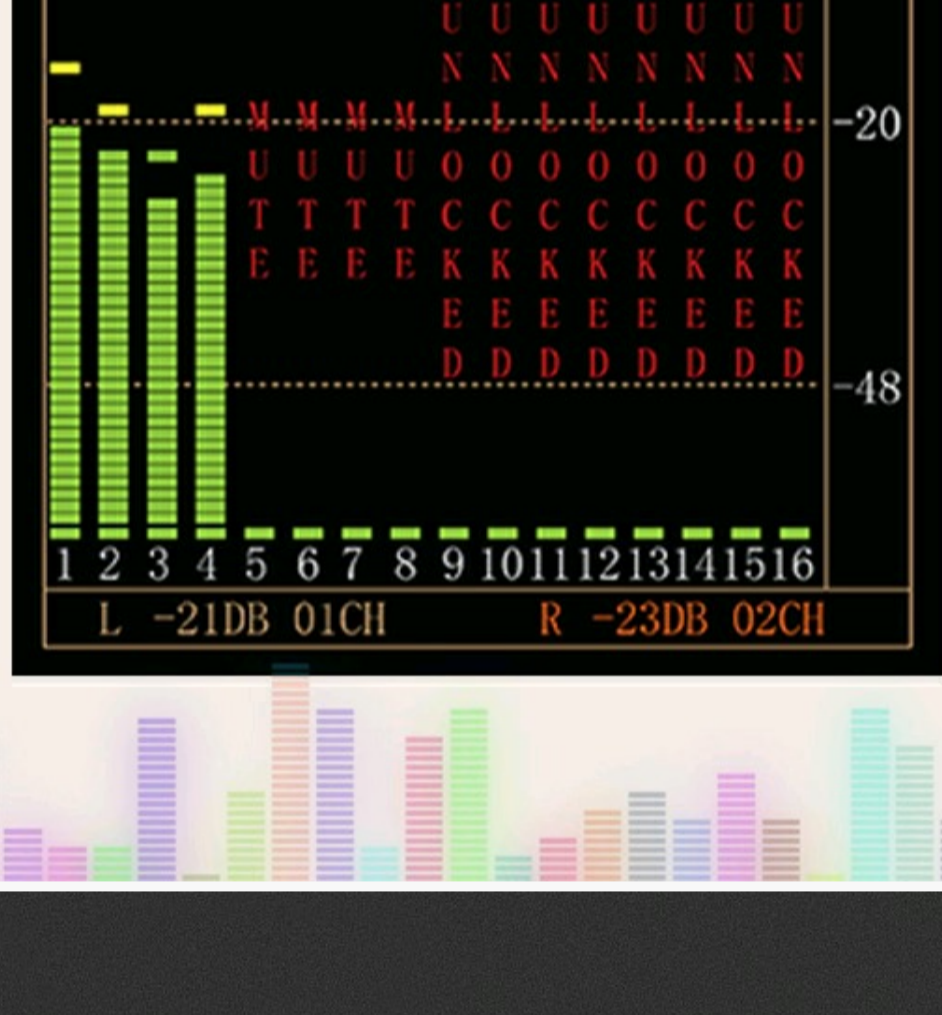
- Each LCD of M-1093F supports:
- 2K/3G/HD/SD-SDI input x 2
  - 2K/3G/HD/SD-SDI loop output x 2
  - HDMI 1.3 input x 1
  - HDMI 1.3 loop output x 1
  - CVBS input x 1
  - CVBS loop output x 1
  - 3.5mm analog audio input x 1
  - 3.5mm analog audio output x 1



## Video Analysis Assistant Pattern

Waveform / Vector scope / Histogram

M-1093F supports video analysis assistant patterns includes: Waveform (Y/Pb/Pr/R/G/B), Vector scope, Histogram (R/G/B/Y), to convert the digital video quality info (Luma, Color, Saturation, etc) to patterns, and the patterns can be switched on/off individually, select display position (Up/Down/Left/Right), size, color, and translucence.



## Embedded audio monitoring

Up to 16-ch meters with alert and select output

M-1093F supports SDI-16ch and HDMI-8ch embedded audio meters display, with marks and audio abnormal alert info. Users can also select any 2 channels audio to output via 3.5mm socket or speakers. The audio meter pattern position can be selected from one of four corners, and you can select to display only 2 channels, 8 channels, and full 16 channels. Also scale markers, alert info, and translucent of the audio meter pattern are selectable.

## UMD and Text-Tally Display

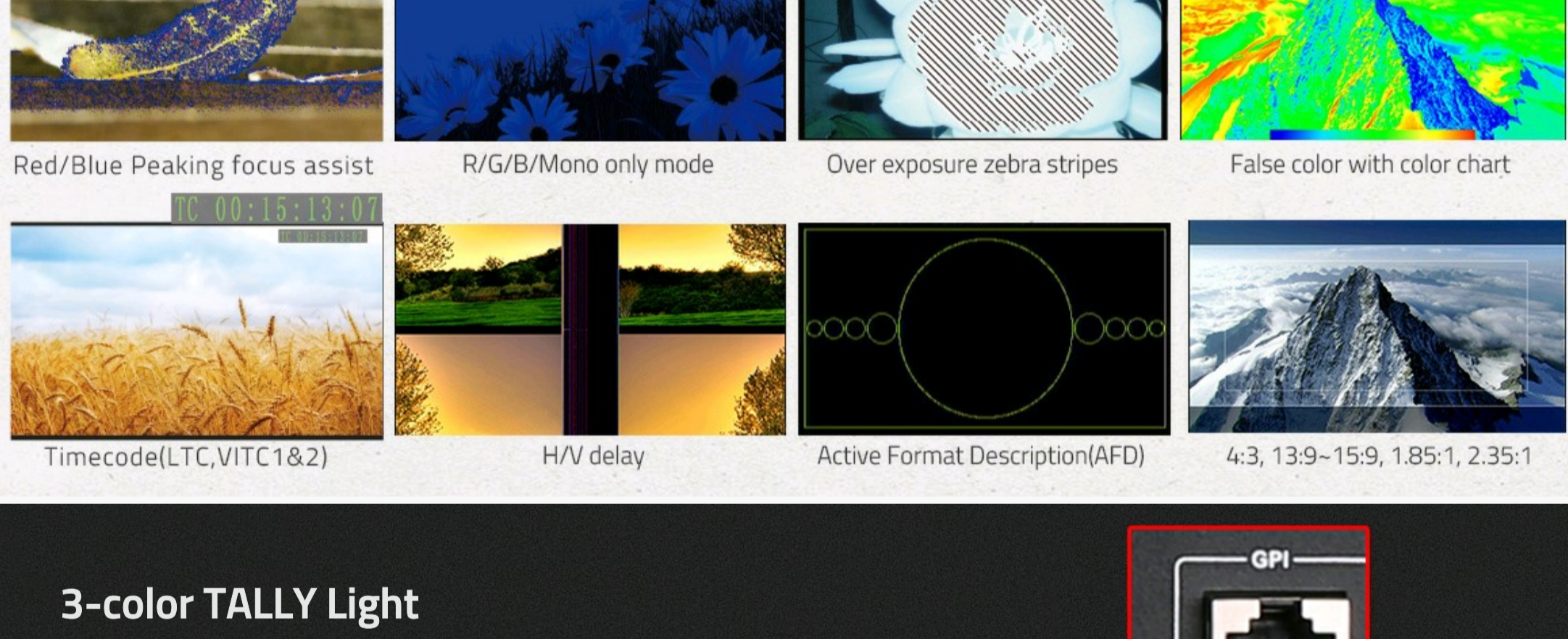
TSL 3.1 / 4.0 Protocol

M-1093F supports UMD and Text-Tally display of TSL 3.1/4.0 protocol, with 1-126 TSL address selection, and Max 8 letters displayed. The UMD/TALLY signal inputs via RJ45(RS485) port on the rear panel of the monitor.



## Peaking, R/G/B/Mono only, Zebra, False color

Timecode, H/V delay, AFD, Scale Markers



## 3-color TALLY Light

RJ45(RS485) input signal

There are front TALLY lights of Red, Green and Yellow colors on each screen, and users can define the pins of RJ45 port to control the TALLY lights.



## USB Firmware Upgrade

The monitor provides a standard USB port on the rear panel, for firmware upgrade. Users can download the latest firmware file to a USB stick, and directly insert into M-1093F monitor to upgrade, without PC connection.



## Power Supply

M-1093F provides a 4-pin XLR socket of DC 6.5-24V power input, for the both 2 screens, and an AC-DC adaptor is attached on the rear panel of the monitor.



## Installation

M-1093F is standard 19" rack mount fixing, occupies 4U height. The monitor is ±30° up and down rotatable when installed on racks.



Please enter Email address below and subscribe our newsletters.

submit

Privacy Policy

leave a message

# M-1093F

## Dual 9" FHD Rack LCD Monitor

**SWIT®**



### ■ Introductions

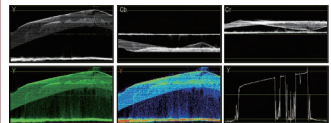
- ◆ 9-inch IPS LCD Panel × 2
- ◆ 1920 × 1200 resolution, 800:1 contrast
- ◆ 19-inch 4U rack mounting, ± 30° rotatable
- ◆ 2K/3G/HD/SD-SDI, HDMI, CVBS monitoring
- ◆ 16-ch Embedded audio meters with alert
- ◆ Select any 2 audio channels to output
- ◆ Waveform Y/Cb/Cr/R/G/B and single line
- ◆ Vector scope, histogram R/G/B/Y
- ◆ AFD, H/V delay, R/G/B/Mono, False color
- ◆ TSL UMD and text TALLY display
- ◆ Zebra stripes, Peaking focus assist
- ◆ SDI timecode display
- ◆ Marker 4:3, 13:9, 14:9, 15:9, 1.85:1, 2.35:1
- ◆ TALLY light and GPI control
- ◆ USB firmware upgrade

### ■ Features

#### Audio Meters

SDI: 16-ch / HDMI: 2-ch  
 Select any 2 channel to output  
 Audio abnormal alert info display  
 Display only 2-ch, 8-ch, or full 16-ch  
 Chart position / Translucent adjust

#### Waveforms



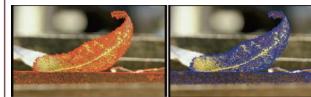
Y/Cb/Cr/R/G/B with single line selection  
 White / Green / False color display  
 Larger size waveform in center  
 Chart position / Translucent adjust



#### Histogram

R/G/B/Y histogram display  
 100%–107% Over-exposure alert

#### Peaking Focus Assist



Red / Blue lines select

#### Vector Scope

White / Color / False color display  
 Larger size vector pattern in center  
 Chart position / Translucent adjust

#### Scale Markers

4:3, 13:9, 14:9, 15:9, 1.85:1, 2.35:1 markers  
 Mask background translucent adjust

### ■ Specification

#### LCD Performance

Size	9 inches × 2
Display area	191.5 × 119.7 mm
Resolution	1920 × 1200
Color	8 bit, 16.77M Color
Aspect ratio	16:9 (4:3 adjustable)
Brightness	450 cd/m <sup>2</sup>
Contrast	1000:1
Viewing Angle	H/V:170° / 170°

#### Input/output (Each LCD)

Input	BNC × 2	2K/3G/HD/SD-SDI input × 2
	BNC × 1	CVBS input
	HDMI-A × 1	HDMI 1.3 input
	GPI × 1	UMD, GPI × 1
Output	3.5mm × 1	analog audio input
	BNC × 2	2K/3G/HD/SD-SDI loop output × 2
	BNC × 1	CVBS loop output
	HDMI-A × 1	HDMI 1.3 loop output
	3.5mm × 1	SDI/HDMI/analog audio output

#### Video Format

SDI	SMPTE-2048-2	2048 × 1080p ( 23.98 / 24 / 25 / 29.97 / 30 / 50 / 59.94 / 60 ) 2048 × 1080i ( 50 / 59.94 / 60 )
	SMPTE-425M-A/B	1080p ( 60 / 59.94 / 50 ) 1080i ( 60 / 59.94 / 50 )
	SMPTE-274M	1080p ( 30 / 29.97 / 25 / 24 / 23.98 )
	SMPTE-RP211	1080psf ( 30 / 29.97 / 25 / 24 / 23.98 )
	SMPTE-296M	720p ( 60 / 59.94 / 50 )
	SMPTE-125M	480i ( 59.94 )
	ITU-R BT.656	576i ( 50 )
HDMI		480i / 576i / 480p / 576p 1080i ( 60 / 59.94 / 50 ) 720p ( 60 / 59.94 / 50 ) 1080p ( 60 / 59.94 / 50 / 30 / 29.97 / 25 / 24 / 23.98 ) 1080psf ( 30 / 29.97 / 25 / 24 / 23.98 )
	CVBS	NTSC / PAL

#### General

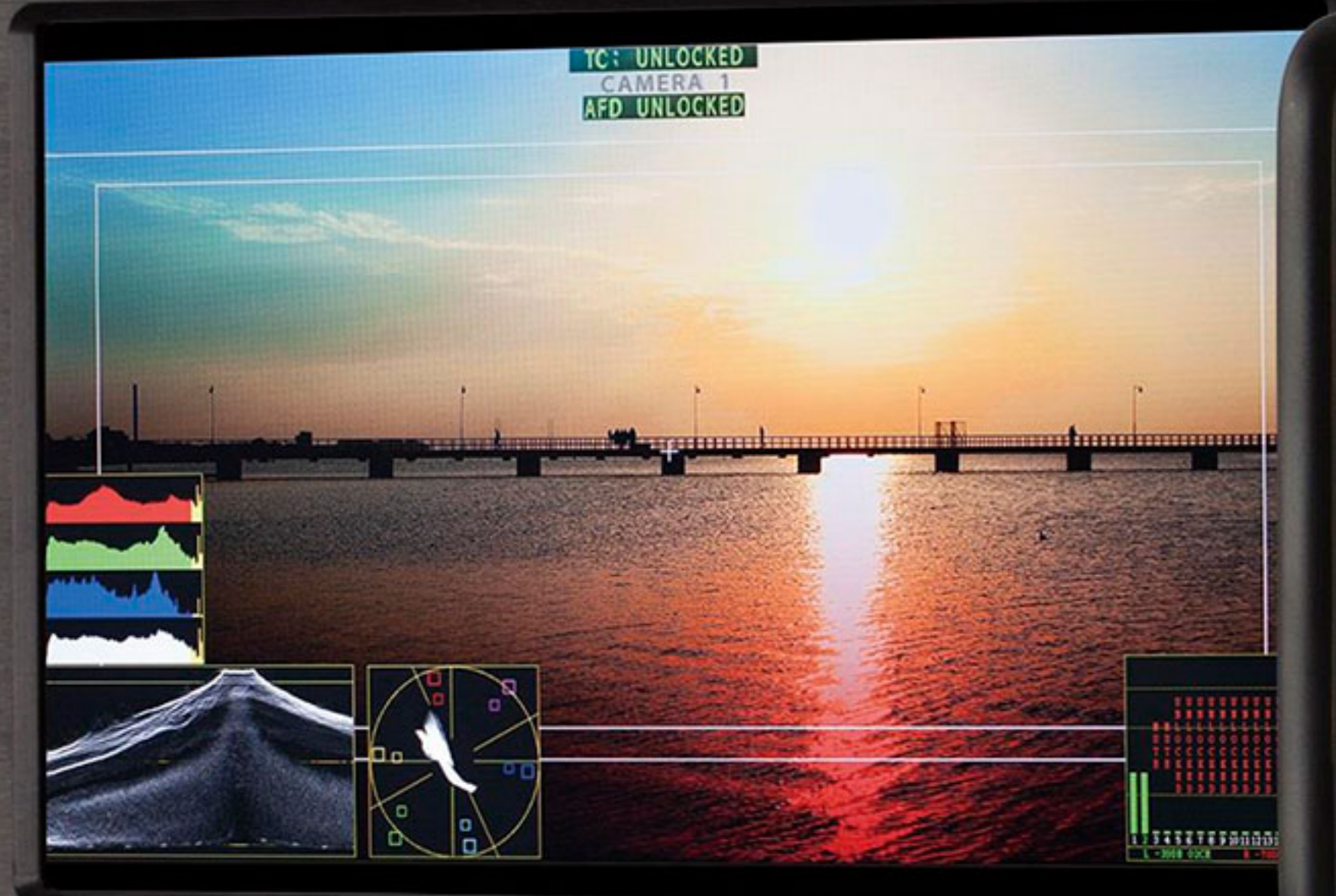
Input voltage	DC 6.5V-24V
Power consumption	36W
Working temperature	0°C ~ +40°C
Working humidity	10% ~ 90%
Storage temperature	- 15°C ~ + 60°C
Storage humidity	10% ~ 90%
Dimensions	484 × 177 × 112.8mm
Net weight (main body)	2.8kg

**SWIT Electronics Co., Ltd.**

Distributed by:

Website: [www.swit.cc](http://www.swit.cc) Tel: +86 25 85805753  
 Email: [contact@swit.cc](mailto:contact@swit.cc) Fax: +86 25 85805296

SWIT.



Control panel for the left monitor, featuring:

- Four function buttons: SOURCE, F1, F2, F3 (top row) and F4, F5, WFM, DISPLAY (bottom row).
- Five rotary knobs: MENU/ENTER, BRIGHT, CONTRAST, SATURATION, and POWER.
- Two circular speaker grilles on either side.

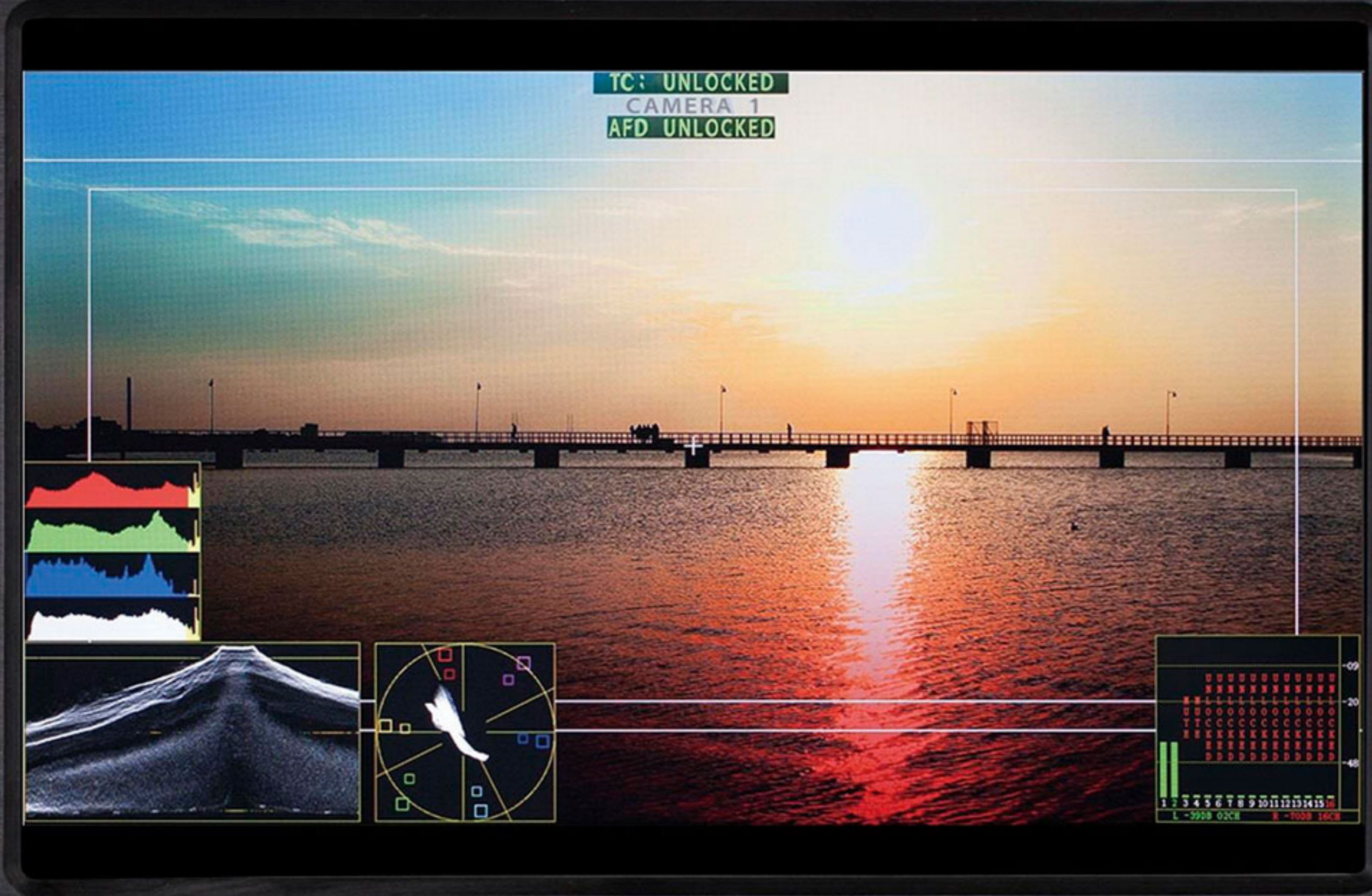
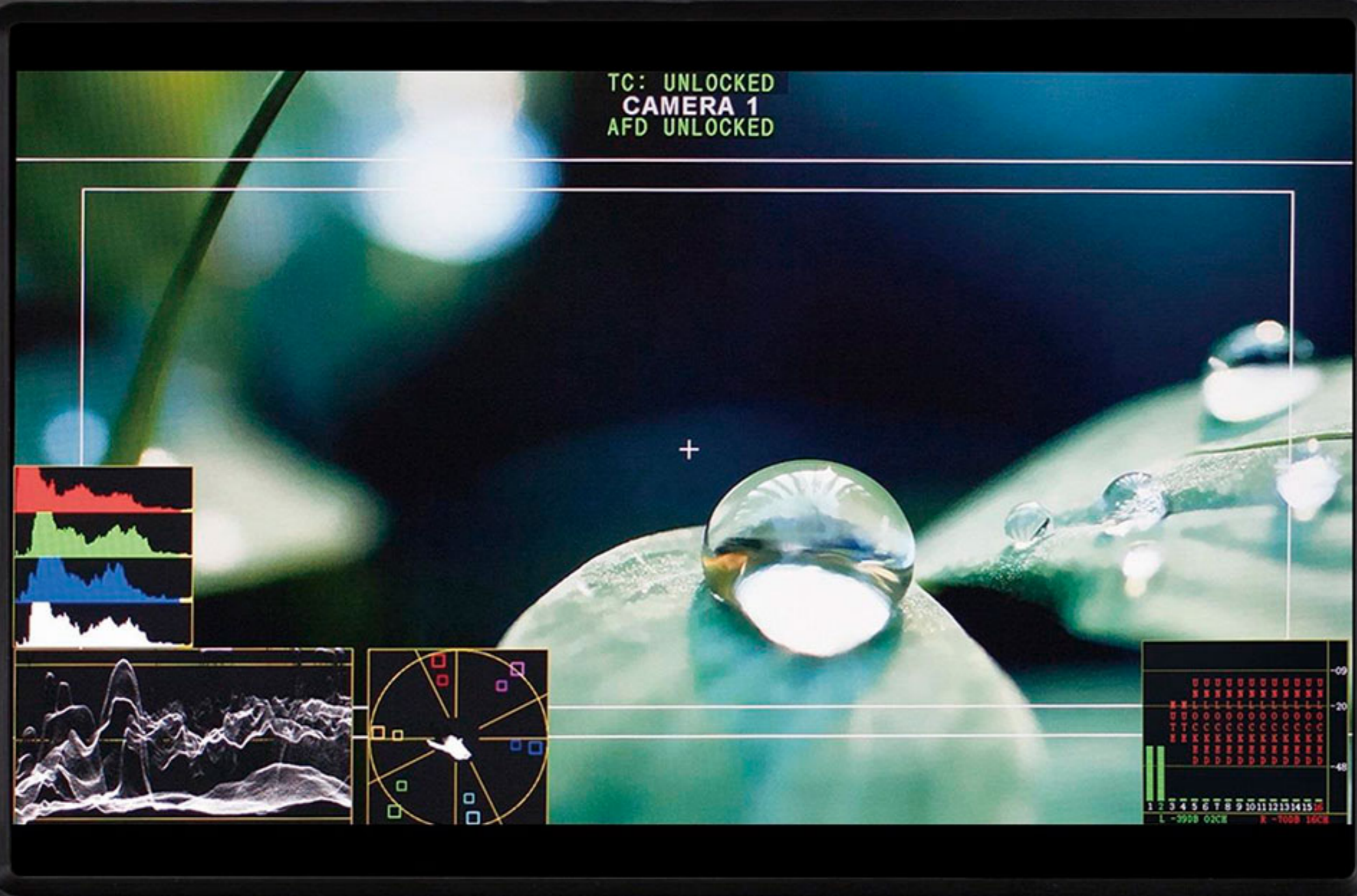
Control panel for the right monitor, featuring:

- Four function buttons: SOURCE, F1, F2, F3 (top row) and F4, F5, WFM, DISPLAY (bottom row).
- Five rotary knobs: MENU/ENTER, BRIGHT, CONTRAST, SATURATION, and POWER.
- Two circular speaker grilles on either side.





SWIT®



Control panel for the left monitor, featuring a speaker on the left, a power button, and several function buttons: SOURCE, F1, F2, F3, F4, F5, WFM, DISPLAY, MENU/ENTER, BRIGHT, CONTRAST, SATURATION, and POWER.

Control panel for the right monitor, featuring a speaker on the right, a power button, and several function buttons: SOURCE, F1, F2, F3, F4, F5, WFM, DISPLAY, MENU/ENTER, BRIGHT, CONTRAST, SATURATION, and POWER.