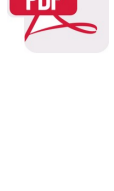


Home > Lighting > Fresnel LED

# FL-C200D | 200W Bi-color Studio COB-LED Fresnel Light



- > 200W COB LED Fresnel studio light
- > 15-50° Flood/Spot angle adjust
- > Optional E-motor adjust spot angle by DMX
- > 65,000Lux@1m high bright hard light
- > Fresnel and Fly's eye compound lens
- > 2700K-6500K continuously adjust
- > 0-100% flick-free dimming
- > Preset simulated light effects
- > CRI Ra 97, TLCI 99
- > DMX512 in & out dimmer control
- > Dimmer/Color Temp/Fan off DMX addresses
- > USB power out for wireless DMX receiver
- > LCD display menu operation system
- > PowerCON TRUE1 AC in and loop out
- > 4-leaf metal barn doors and Yoke bracket

MSRP Ex TAX / Shipping

Features Specifications Download What's in box Optional accessory Related



## 200W COB-LED Fresnel Light

High intensity 65,000Lux @ 1m

FL-C200D is a 200W Bi-color COB-LED fresnel light, 65,000Lux @1m high bright, with DMX control, high CRI/TLCI and accurate color performance, for broadcast studio, theatre, film set install applications.



## 15°-50° Spot/Flood Adjust

FL-C200D outputs 15°-50° beam angle by adjusting position of LED board internally, and supports optional E-motor to adjust spot angle by DMX. 0 to 100% PWM digital dimming, smoothly and non-flickering.

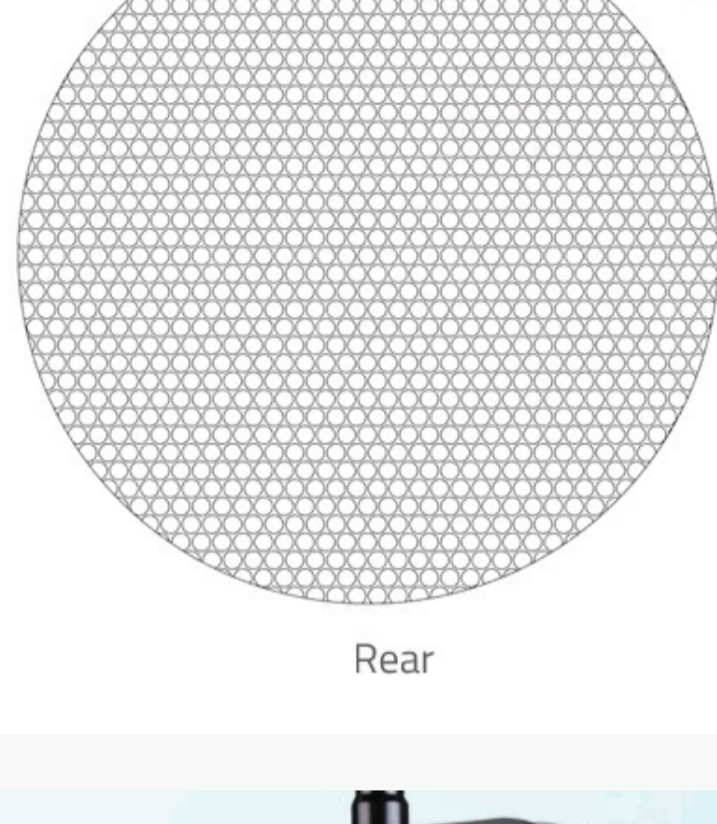
Distance	15° Spot	50° Flood
1 meter	65,000Lux	12,000Lux
3 meters	7,200Lux	1,300Lux
5 meters	2,600Lux	480Lux

## Fresnel and Fly's Eye Lens

FL-C200D is equipped with double side compound lens - front fresnel rings to converge the lights and rear fly's eye array to eliminate yellow halo, and get an even distributed spot light.



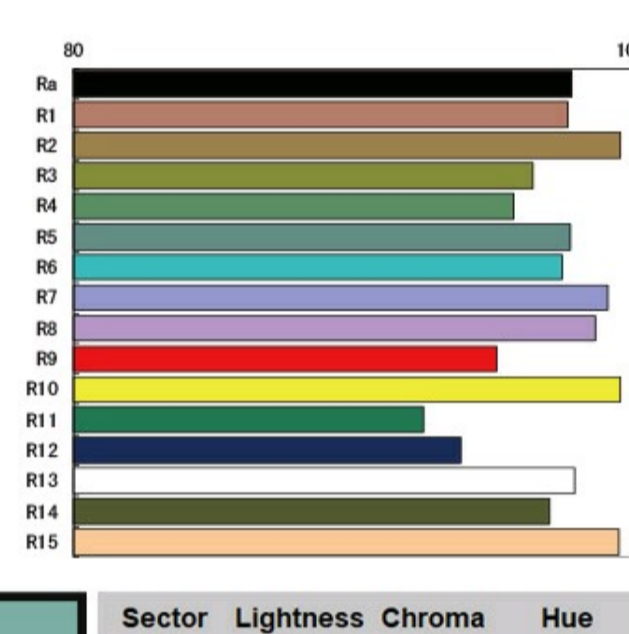
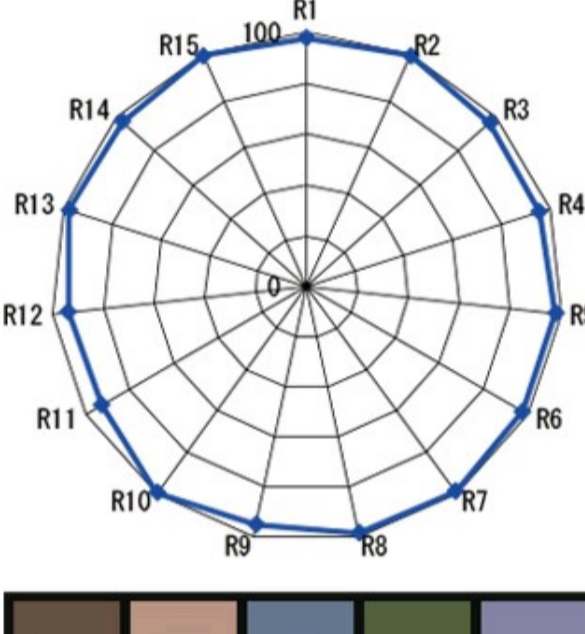
Front



Rear

## 2700K-6500K Continuous

FL-C200D COB-LED includes 200W 2700K and 200W 6500K LED, and can be continuously adjusted between 2700K and 6500K. The light outputs 200W high intensity at any color temperature.

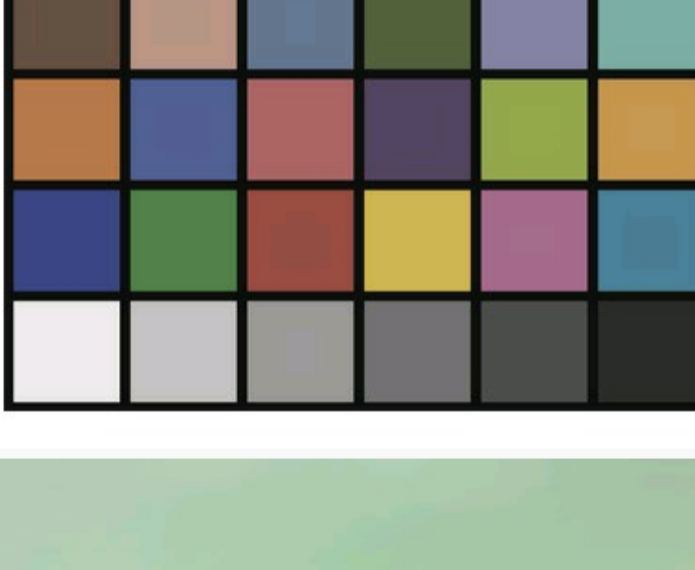


## Accurate Color Render

CRI 97; TLCI 99

CRI (Color Rendering Index) is a measure of the ability of a light source to reveal the colors of various objects faithfully in comparison with a natural light source. And TLCI (Television Lighting Consistency Index) is special for the color reveal ability by camera sensor. Max value 100.

The normal LED light has 80-85 CRI or TLCI, while FL-C200D offers the ultra high CRI at 97 and TLCI at 99, and will not lose the object original colors.



Sector	Lightness	Chroma	Hue
R	0	0	0
R/Y	0	0	0
Y	0	0	0
Y/G	0	0	0
G	0	0	0
G/C	0	0	0
C	0	0	0
C/B	0	0	0
B	0	-	0
B/M	0	0	+
M	0	0	0
M/R	0	0	0

## DMX, AC IN & LOOP

FL-C200D provides 5-pin XLR DMX512 in and out, with a 5V USB-A socket to power wireless DMX receiver, and support PowerCon True1 AC input and loop output for easy cable works when building studio.



## Menu Operating System

CCT DMX EFF SYS  
6500K 100%  
DMX ON 21°C AUTO

HOME PAGE

CCT DMX EFF SYS  
DIMMER 1  
COLOR TEMP 2  
SPOT-FLOOD 3  
FAN ON/OFF 4

DMX addr.setting

CCT DMX EFF SYS  
EFFECT OFF  
DIMMER 10  
SPEED 3  
CYCLE TIME Constant

Light Effect setting

CCT DMX EFF SYS  
Firmware Version V1.2.6R  
Model FL-C400D  
Hardware ID 0642000001  
Spot-Flood 15°

System setting Spot/Flood angle

CCT DMX EFF SYS  
Firmware Update Yes  
Fan Auto/OFF AUTO  
DMX ON/OFF ON  
Dimming Curve Exponential

System setting Dimming curves

CCT DMX EFF SYS  
System Reset Yes  
Motor Reset Yes

System setting E-Motor initializing Reset

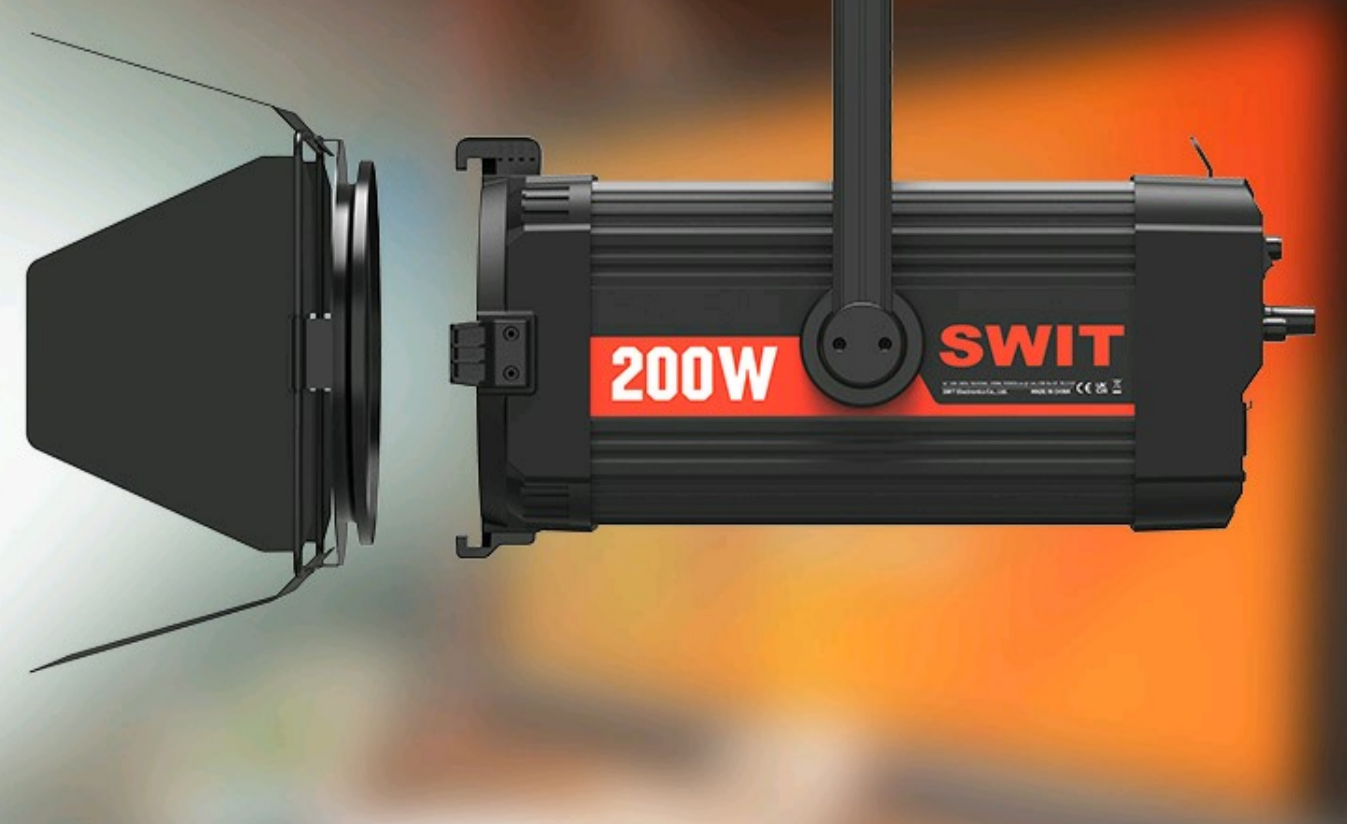


## Optional Spot Angle E-motor

FL-C200D supports external electro-motor installed to adjust the spot/flood angle by Menu knob or by DMX control. The optional E-motor is easily user installed (Part number LA-M50). You can also order the light with factory pre-installed E-motor, SKU model FL-C200DM.

## 4-leaf Metal Barn Door

FL-C200D is equipped with 4-leaf metal barn doors, dismountable and rotatable.



## SWIT Electronics Europe GmbH

Heerdterbuschstrasse 10 / HALLE 9,  
41460 Neuss, NRW Germany  
VAT: DE308323924  
WEEE-Reg.-Nr. DE 37399843  
Email: info@swit-europe.com

## Email Newsletter

Please enter Email address below and subscribe our newsletters.

submit Privacy Policy

leave a message



# SWIT

## 200W Bi-Color Studio Fresnel COB-LED Light

### FL-C200D



### 200W COB-LED Fresnel Light

FL-C200D is a 200W Bi-color COB-LED fresnel light, 65,000Lux @1m high bright, with DMX control, high CRI/TLCI and accurate color performance, for broadcast studio, theatre, film set install applications.



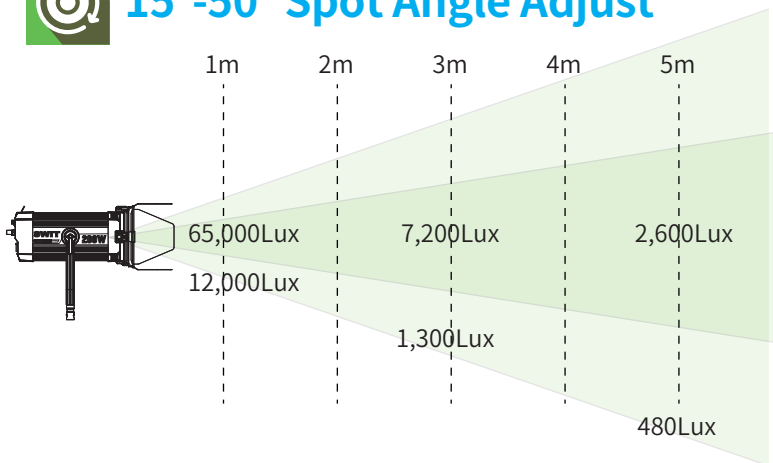
### E-motor Spot Angle Adjust

FL-C200D supports external electro-motor installed to adjust the spot/flood angle by Menu knob or by DMX control.  
\* You can also order the light with factory pre-installed E-motor, SKU FL-C200DM.



Optional E-motor LA-M50

### 15°-50° Spot Angle Adjust



### Independent DMX Addr

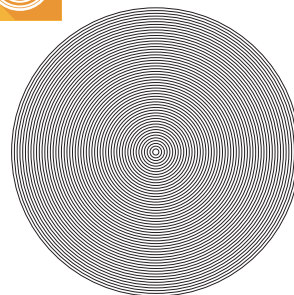
FL-C200D can set 4x independent DMX addresses for: (1) Dimmer (2) Color temp (3) Spot angle (4) Fan on/off \*

\* The Max Dimmer value will be limited to 73% (Refers to Exponential dimming curve) when fan is turned off.

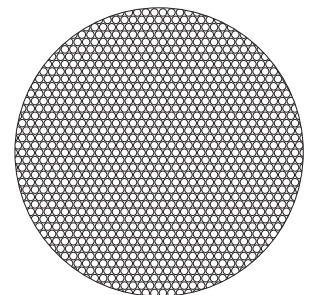
### 2700K-6500K Continuous

FL-C200D COB-LED includes 200W 2700K and 200W 6500K LED, and can be continuously adjusted between 2700K and 6500K. The light outputs 200W at any color temperature.

### Fresnel & Fly's Eye Lens



Front Fresnel rings



Rear Fly's Eye array

FL-C200D is equipped with double side compound lens: front fresnel rings to converge the lights and rear fly's eye array to eliminate yellow halo, and get an even distributed spot light.



## Power and Control

**Color Temp 2700-6500K**

**5V USB power output**

Optional:  
Wireless DMX Receiver  
**RadioLux** or **CRMX**

**5-pin DMX512 IN & OUT**

**DIMMER 0-100%**

**Menu Operating Keys**

**15°-50° Spot Angle Adjust**

Optional:  
**LA-M50**  
E-motor to adjust spot angle by DMX

**PowerCON TRUE1 AC IN & LOOP**

<table border="1" style="width: 100%; text-align: left;"> <thead> <tr><th>CCT</th><th>DMX</th><th>EFF</th><th>SYS</th></tr> </thead> <tbody> <tr><td>2700k</td><td></td><td>100%</td><td></td></tr> <tr><td colspan="4">DMX ON 20 ° OFF</td></tr> </tbody> </table> <p>Home Page</p>	CCT	DMX	EFF	SYS	2700k		100%		DMX ON 20 ° OFF				<table border="1" style="width: 100%; text-align: left;"> <thead> <tr><th>CCT</th><th>DMX</th><th>EFF</th><th>SYS</th></tr> </thead> <tbody> <tr><td>DIMMER</td><td></td><td></td><td>1</td></tr> <tr><td>COLOR TEMP</td><td></td><td></td><td>2</td></tr> <tr><td>SPOT-FLOOD</td><td></td><td></td><td>3</td></tr> <tr><td>FAN ON/OFF</td><td></td><td></td><td>4</td></tr> </tbody> </table> <p>DMX addr. setting</p>	CCT	DMX	EFF	SYS	DIMMER			1	COLOR TEMP			2	SPOT-FLOOD			3	FAN ON/OFF			4	<table border="1" style="width: 100%; text-align: left;"> <thead> <tr><th>CCT</th><th>DMX</th><th>EFF</th><th>SYS</th></tr> </thead> <tbody> <tr><td>EFFECT</td><td></td><td></td><td>OFF</td></tr> <tr><td>DIMMER</td><td></td><td></td><td>100</td></tr> <tr><td>SPEED</td><td></td><td></td><td>5</td></tr> <tr><td>CYCLE TIME</td><td></td><td></td><td>Once</td></tr> </tbody> </table> <p>Light effect setting</p>	CCT	DMX	EFF	SYS	EFFECT			OFF	DIMMER			100	SPEED			5	CYCLE TIME			Once
CCT	DMX	EFF	SYS																																																			
2700k		100%																																																				
DMX ON 20 ° OFF																																																						
CCT	DMX	EFF	SYS																																																			
DIMMER			1																																																			
COLOR TEMP			2																																																			
SPOT-FLOOD			3																																																			
FAN ON/OFF			4																																																			
CCT	DMX	EFF	SYS																																																			
EFFECT			OFF																																																			
DIMMER			100																																																			
SPEED			5																																																			
CYCLE TIME			Once																																																			
<table border="1" style="width: 100%; text-align: left;"> <thead> <tr><th>CCT</th><th>DMX</th><th>EFF</th><th>SYS</th></tr> </thead> <tbody> <tr><td>Firmware Version</td><td></td><td></td><td>V1.1.17R</td></tr> <tr><td>Model</td><td></td><td></td><td>FL-C200D</td></tr> <tr><td>Hardware ID</td><td></td><td></td><td>0642XXXXXX</td></tr> <tr><td>Spot-Flood</td><td></td><td></td><td>15°</td></tr> </tbody> </table> <p>System setting Spot/Flood angle</p>	CCT	DMX	EFF	SYS	Firmware Version			V1.1.17R	Model			FL-C200D	Hardware ID			0642XXXXXX	Spot-Flood			15°	<table border="1" style="width: 100%; text-align: left;"> <thead> <tr><th>CCT</th><th>DMX</th><th>EFF</th><th>SYS</th></tr> </thead> <tbody> <tr><td>Firmware Update</td><td></td><td></td><td>Yes</td></tr> <tr><td>Fan Auto/OFF</td><td></td><td></td><td>Yes</td></tr> <tr><td>DMX ON/OFF</td><td></td><td></td><td>OFF</td></tr> <tr><td>Dimming Curve</td><td></td><td></td><td>Exponential</td></tr> </tbody> </table> <p>System setting Dimming curves</p>	CCT	DMX	EFF	SYS	Firmware Update			Yes	Fan Auto/OFF			Yes	DMX ON/OFF			OFF	Dimming Curve			Exponential	<table border="1" style="width: 100%; text-align: left;"> <thead> <tr><th>CCT</th><th>DMX</th><th>EFF</th><th>SYS</th></tr> </thead> <tbody> <tr><td>System Reset</td><td></td><td></td><td>Yes</td></tr> <tr><td>Motor Reset</td><td></td><td></td><td>Yes</td></tr> </tbody> </table> <p>System setting E-motor reset</p>	CCT	DMX	EFF	SYS	System Reset			Yes	Motor Reset			Yes
CCT	DMX	EFF	SYS																																																			
Firmware Version			V1.1.17R																																																			
Model			FL-C200D																																																			
Hardware ID			0642XXXXXX																																																			
Spot-Flood			15°																																																			
CCT	DMX	EFF	SYS																																																			
Firmware Update			Yes																																																			
Fan Auto/OFF			Yes																																																			
DMX ON/OFF			OFF																																																			
Dimming Curve			Exponential																																																			
CCT	DMX	EFF	SYS																																																			
System Reset			Yes																																																			
Motor Reset			Yes																																																			

Included: TRUE1 AC Cable

Optional: TRUE1 Loop Cable  
**PA-LC20**  
2 meters length, Max 16A load;  
220V: Loop up to 15x FL-C200D  
110V: Loop up to 8x FL-C200D



## Specifications

Model	FL-C200D
LEDs	COB Chip-on-board
Spot angle	15° - 50° adjust
Illuminance	65,000Lux @ 1m/Spot
Color Temp	2700K-6500K
Color Render	CRI 97; TLCI 99; SSI(D55) 75
DMX	5-pin XLR DMX in & out
Input Voltage	AC 100-240V, 50/60Hz PowerCON True1 in & out
Power	200W
Net Weight	6.2kg incl. Barndoors

