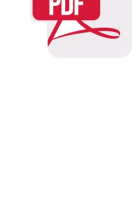
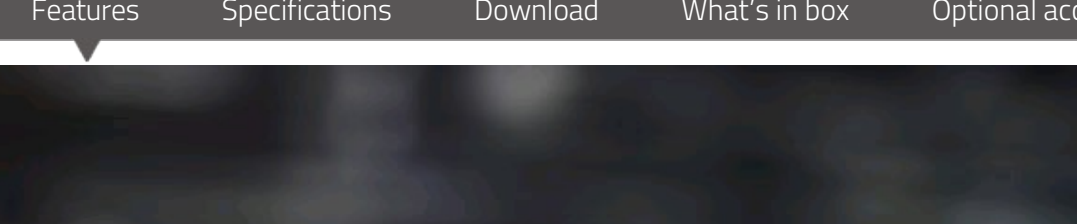


CL-60D | 60W 1:1 Bi-color SMD LED panel light



- > 900pcs ultra bright long-life LEDs
- > SMD Surface mounted LED technology
- > 65° wide beam angle, equally spread
- > 2700K-6500K continuously adjustable
- > 60W power, 2000Lux @ 1meter
- > 0-100% flick-free dimming
- > No Fan, No Noise
- > Super high CRI 98, TLCI 99
- > DMX512 controlled color and dimmer
- > LCD display color and dimmer value
- > Power by V/Gold mount battery or AC adaptor
- > 4-leaf metal barn doors and Yoke bracket
- > Optional 40° honeycomb



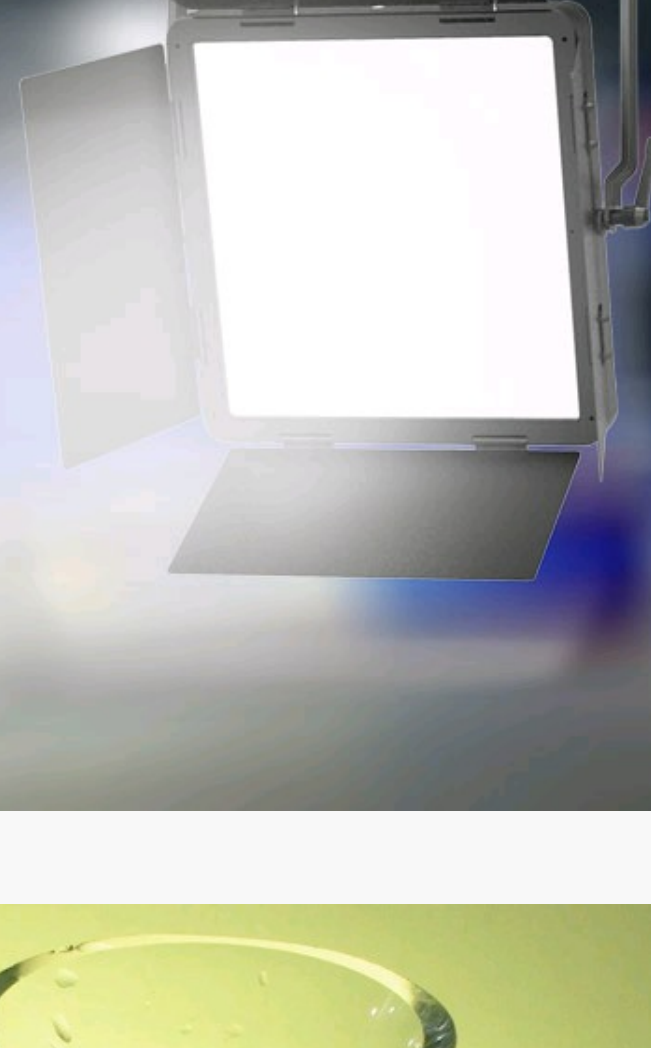
MSRP Ex TAX / Shipping

Features Specifications Download What's in box Optional accessory Related

SMD LED Studio Light

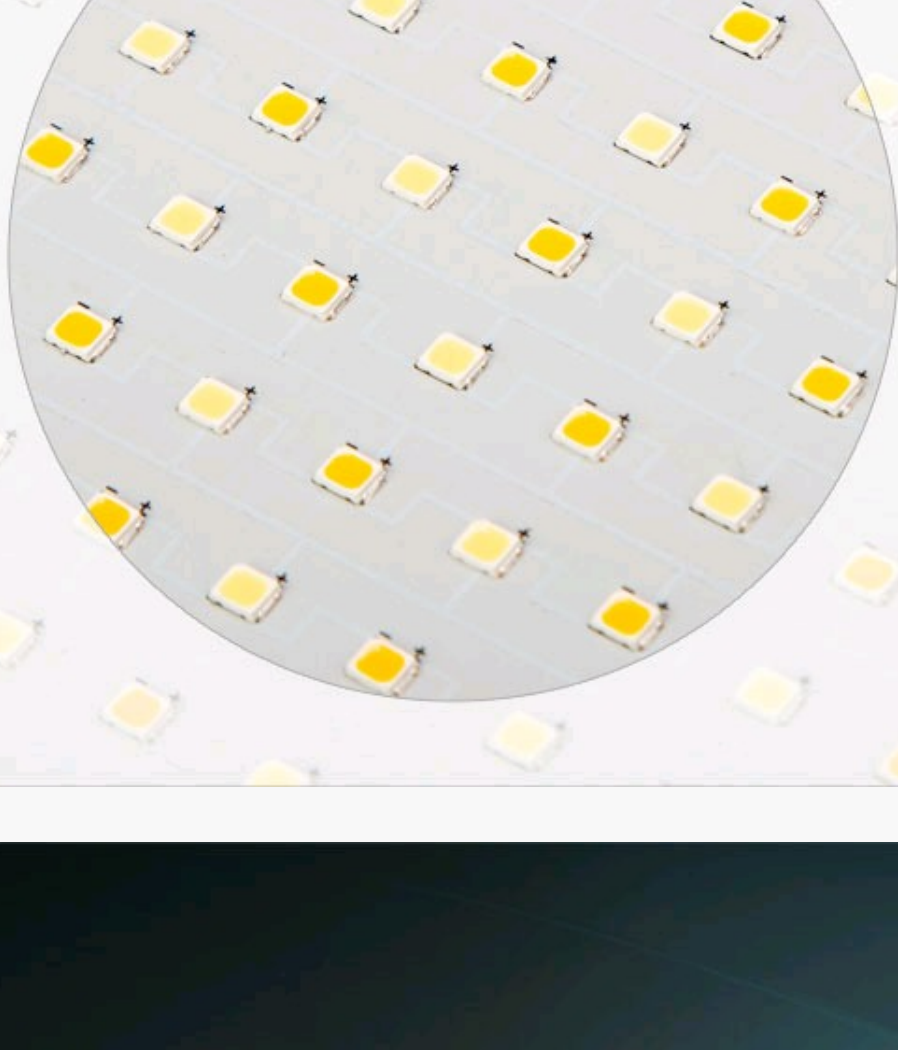
Brighter, softer, wider beam angle

CL-60D is a 60W 1:1 Bi-color SMD LED panel light, with DMX control, high CRI/TLCI and accurate color performance, for broadcast studio, mobile studio, live streaming studio or interview kit applications.



900pcs Surface Mounted LEDs

- CL-60D adopts 900pcs SMD LEDs, featured:
 - (1) higher uniformity of illuminance;
 - (2) wider beam angle;
 - (3) higher color rendering index;
 - (4) Softer and Brighter;
 - (5) longer life time,
- which is an ideal light source for Broadcast studios, green keyer, interview kit, live streaming etc.



2000 Lux @ 1 meter, Fanless

CL-60D outputs 60W power, feeds 2000Lux luminance at 1 meter distance (center), supports 0 to 100%, PWM digital dimming, smoothly and non-flickering. The active cooling system ensures high bright output with no fan or louver, to provide a silent video production environment.



Beam angle testing at 1 meter



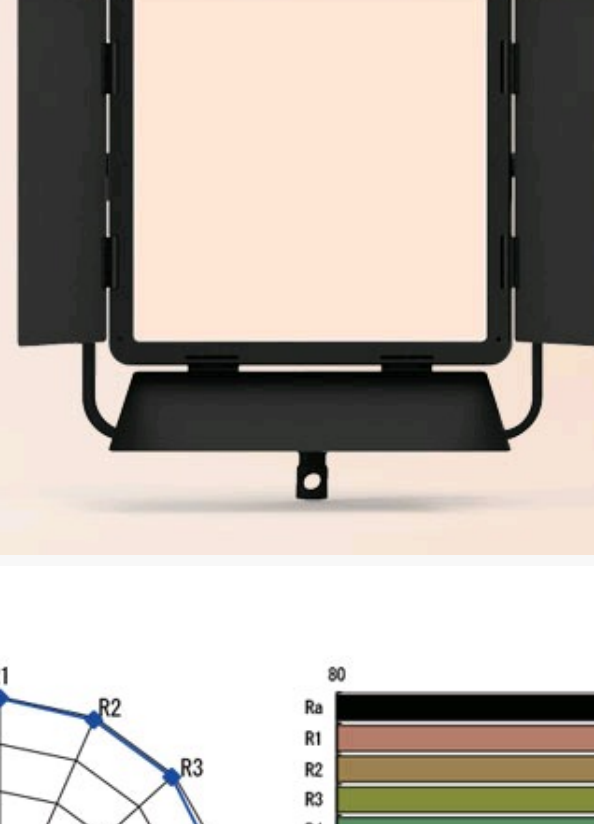
Wider Beam Angle

The SMD LEDs have wider beam angle comparing to the traditional DIP LED bulbs. It will generate an equally spread area light from center to edge, instead of a glaring light spot that suddenly declined from center to edge. The wider angle equally spread light produces a nature light environment in studio.

Bi-color temperature

2700K-6500K continuously adjustable

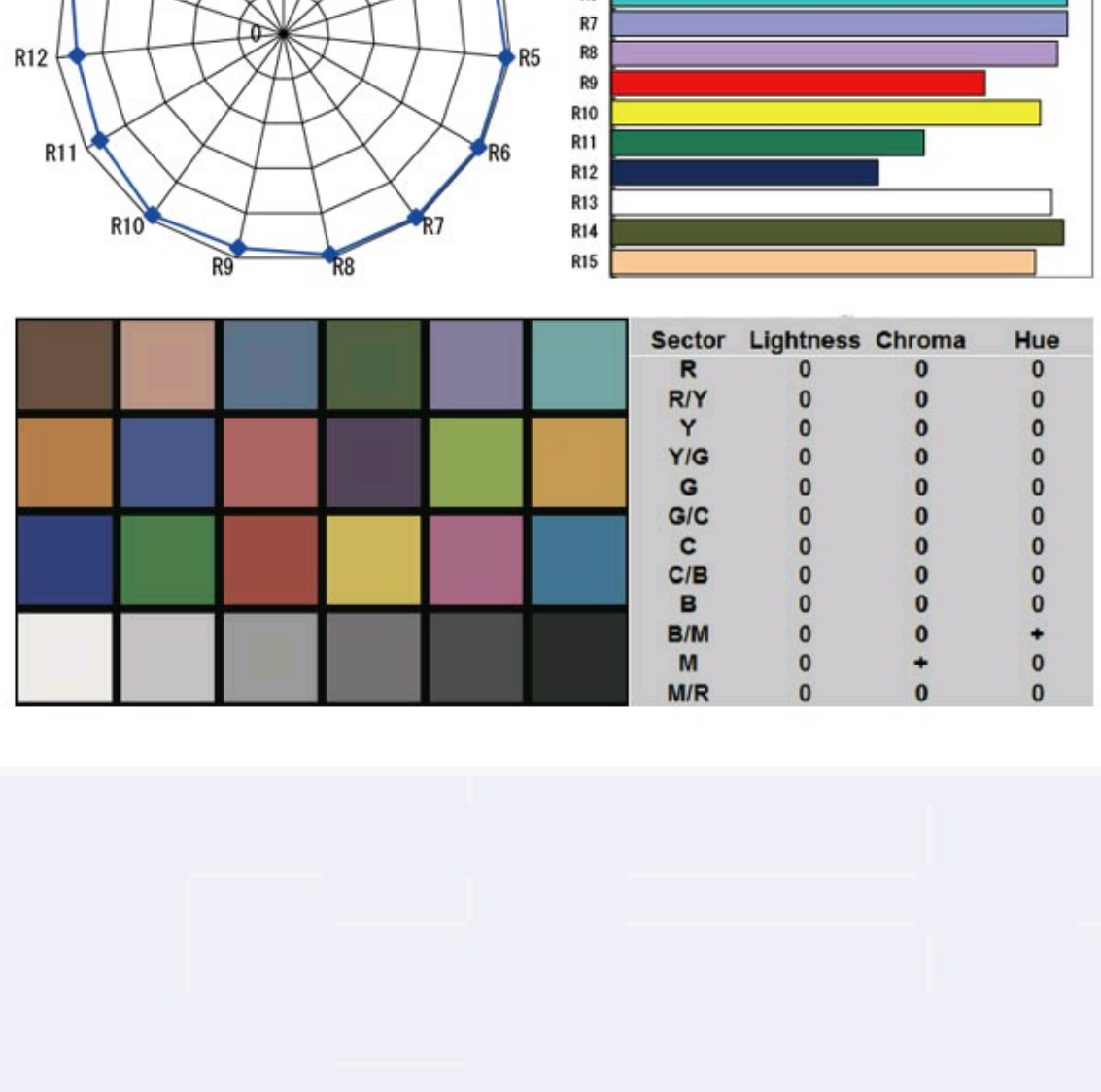
CL-60D alternated with 60W 2700K LEDs and 60W 6500K LEDs, and can be continuously adjusted between 2700K and 6500K, 50K step.



Accurate Color Render

CRI 98; TLCI 99

CRI (Color Rendering Index) is a measure of the ability of a light source to reveal the colors of various objects faithfully in comparison with a natural light source. And TLCI (Television Lighting Consistency Index) is special for the color revealing ability by the color sensor. Max value 100. The normal LED light has 80-85 CRI or TLCI, while CL-60D offers the super high CRI at 98 and TLCI at 99, and will not lose the object original colors.



DMX In
USB Power
DMX Out

DMX512 Control

5pin XLR in and out

DMX address: N= Dimmer; N+1= Color temp Provides a 5V USB power output socket. You can use SWIT LA-WR8 Pocket Wireless DMX controller and power the wireless DMX adaptor by the on board USB socket. Press and hold dimmer knob for 2 seconds to enter DMX address setting from 001 to 512.

LCD screen display

Dimmer / color temp / DMX address

The rear LCD screen can display the current dimmer percentage, color temperature value, DMX channel and CH channel, and remaining battery indications.



DC 11-17V Power Supply

By V-mount battery or AC-DC adaptor

CL-60D supports 11-17V voltage input, with 4-pin XLR DC socket, and equipped with V-mount or Gold mount plate to power by batteries. (The default battery plate is V-mount.)



Optional Honeycomb

CL-60D provides a 40° metal honeycomb plate for optional purchase. The honeycomb can be used together with barndoors. Honeycomb Part number: LA-G60

SWIT

Studio LED Panel

60W/120W SMD-LEDs, DMX control



CL-60D 60W 1:1 DMX

CL-120D 120W 2:1 DMX

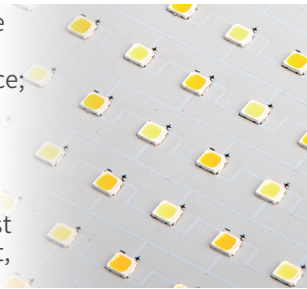


Surface Mounted LEDs

CL-60D/120D adopts SMD Surface Mounted LEDs which featured:

- ① higher uniformity of illuminance;
- ② wider beam angle;
- ③ higher color rendering index;
- ④ Softer and Brighter;
- ⑤ longer life time,

An ideal light source for Broadcast studios, green keyer, interview kit, live streaming etc.



900pcs SMD LEDs
60W 2000Lux@1m



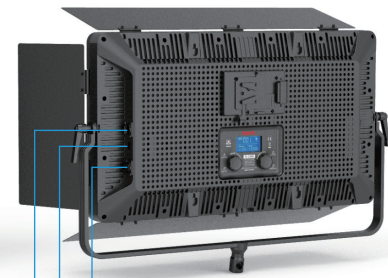
1800pcs SMD LEDs
120W 3700Lux@1m



Power and Control



4-pin XLR DC IN
ON/OFF Switcher
V-mount/Gold mount



5-pin XLR DMX IN
USB Power Out
5-pin XLR DMX OUT

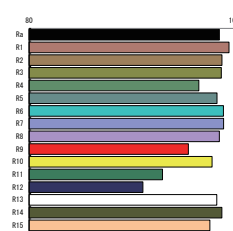
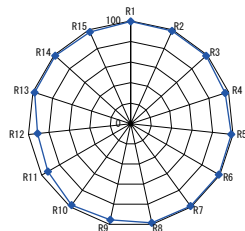


LCD Display
2700-6500K
adjust knob

0-100%
Dimmer



Accurate Color



► CRI 98



Sector	Lightness	Chroma	Hue
R	0	0	0
R/Y	0	0	0
Y	0	0	0
Y/G	0	0	0
G	0	0	0
G/C	0	0	0
C	0	0	0
C/B	0	0	0
B	0	0	0
B/M	0	0	+
M	0	+	0
M/R	0	0	0

► TLCI 99



Specifications

Model	CL-60D	CL-120D
LEDs	900pcs SMD	1800pcs SMD
Color Temp	2700-6500K	2700-6500K
Illuminance	2000Lux @ 1m	3700Lux @ 1m
Color Render	CRI 98; TLCI 99	CRI 98; TLCI 99
DMX	DMX512 in&out	DMX512 in&out
Input Voltage	DC 11-17V	DC 11-17V
Output Power	60W	120W
Dimension	354 × 354 × 73.5mm	644 × 354 × 73.5mm
Net Weight	3.2kg incl. Barndoors	4.7kg incl. Barndoors

SWIT Electronics Co., Ltd.
+86-25-85805753
<http://www.swit.cc>
Email: contact@swit.cc

SWIT Electronics America, Inc
1-(408)260-8258
<http://www.switusa.com>
Email: info@swit.us

SWIT Electronics Europe GmbH
+49(0)20659799339
<http://www.switeu.com>
Email: info@swit-europe.com



Facebook Page



Instagram















