

## 75 ohm Staggered Mid-size Video Patchbays

3G-ready mid-size video jacks allow for more efficient use of rack space.

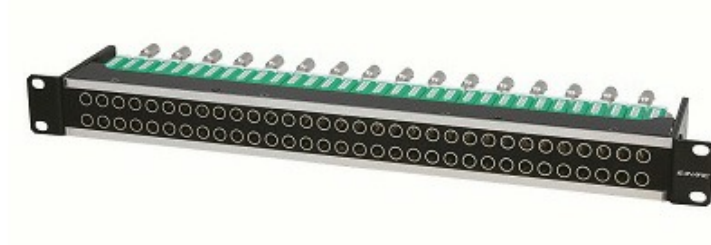
### — Key Features and Benefits

- 32 channels of I/O into 1 or 2 RU, 96 channels of I/O into 4 RU.
- Rotary Switch Technology with dual-contact construction
- Can be recessed 25 mm (except 4 RU type).
- Wide designation strip (2 RU, 4 RU type).
- Lightweight aluminum alloy video jacks.

**Note:** Be sure to use with Mini-WECO Video Patch Cords.



[For inquiries about this products](#)



32MD-ST

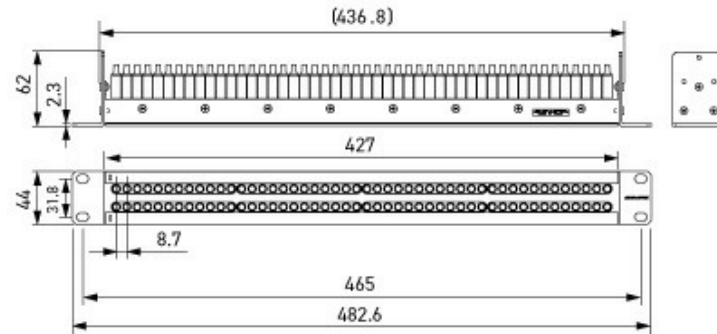


[Tech Data](#)

[Downloads](#)

## // 75 ohm Patchbays

Type	Model	Panel Size	Loaded Video Jacks	Standard package
	32MD-ST	1 RU	32 x MDVJ-STW	1 pc
	32MD-ST	1 RU	32 x MDVJ-ST	1 pc
	32MD-ST-2U	2 RU	32 x MDVJ-STW	1 pc
	32MD-ST-2U	2 RU	32 x MDVJ-ST	1 pc
	32MD-ST-4U	4 RU	96 x MDVJ-STW	1 pc
	32MD-ST-4U	4 RU	96 x MDVJ-ST	1 pc



## Return Loss & Isolation

Model		MDVJ-STW	MDVJ-ST
RL	BNC-BNC: Normal Through	26 dB or greater @ 750 MHz 20 dB or greater @ 2.4 GHz 10 dB or greater @ 3 GHz	-
	BNC-Video: Patch Through		26 dB or greater @ 750 MHz 20 dB or greater @ 2.4 GHz 10 dB or greater @ 3 GHz
	BNC-Self Termination		26 dB or greater @ 750 MHz 20 dB or greater @ 1.5 GHz 10 dB or greater @ 3 GHz
Isolation		35 dB or greater @ 1.5 GHz 20 dB or greater @ 3.0 GHz	35 dB or greater @ 1.5 GHz 20 dB or greater @ 3.0 GHz

## // Dual Video Jacks

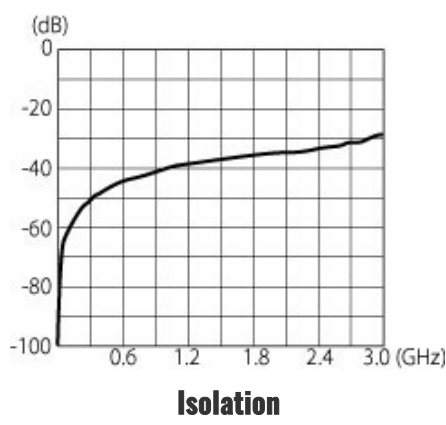
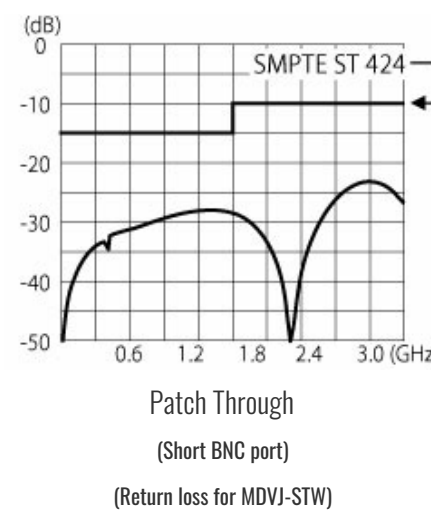
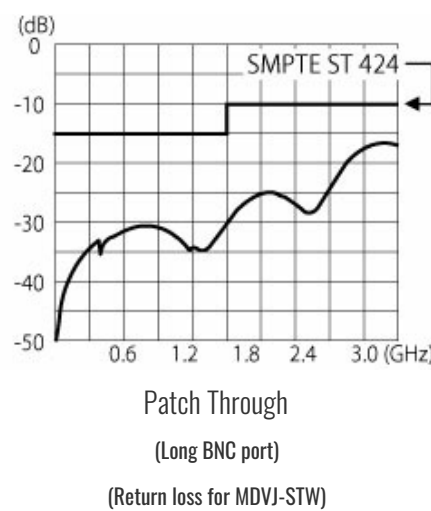
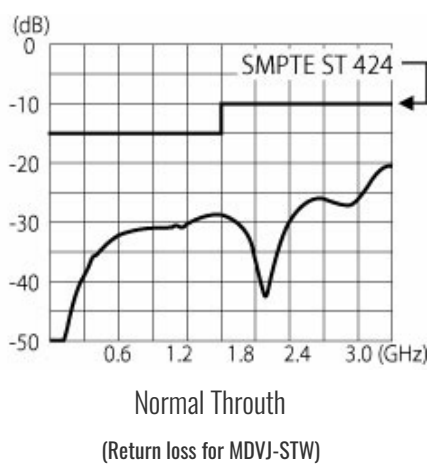
Type	Model	Description	Rear Jacks	Standard package
	MDVJ-STW	Normal through, Staggered rear jacks	BNC	1 pc
	MDVJ-ST	Straight through, Staggered rear jacks	BNC	1 pc

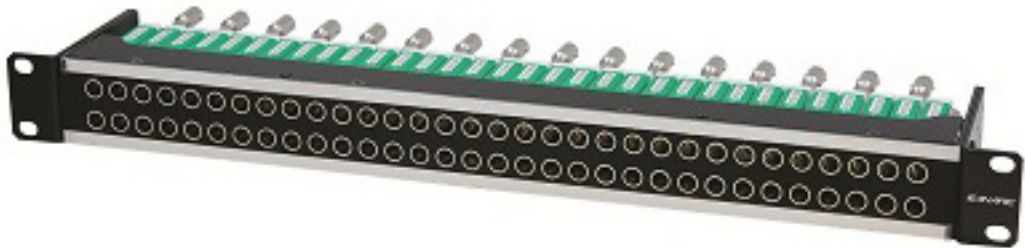
## // Mini-WECO Video Plugs

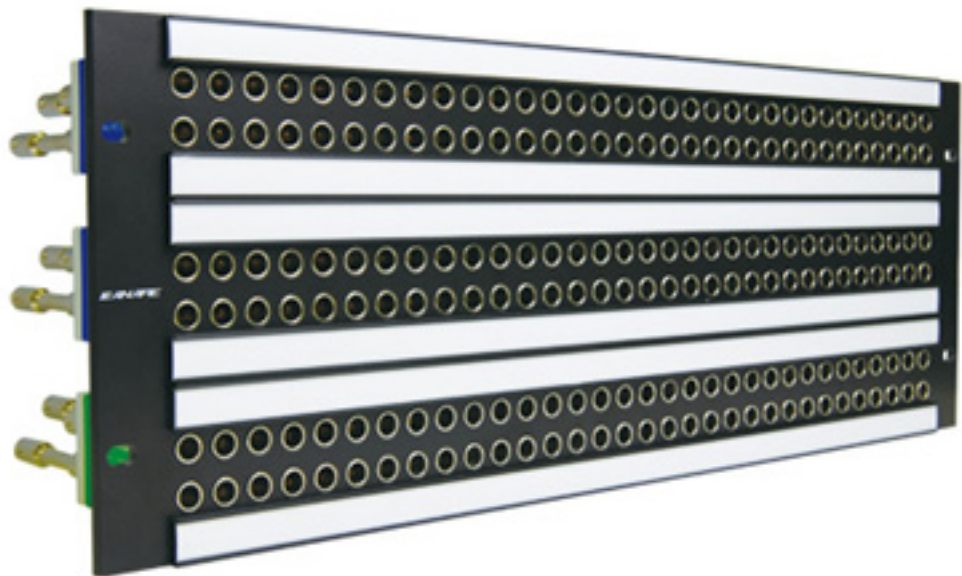
Type	Model	Suitable Cable	Boot	Die Set	Standard package
-	MVP-C25HW	L-2.5CHWS	CB25	TCD-D253F	20 pcs
	MVP-C4	LV-61S, RG-59B/U, Belden 8241, 8279, 88241	CB25	TCD-451CA TCD-4CA	20 pcs

## // Accessories

Type	Model	Description	Standard package
NO IMAGE	MVPC**	Mini WECO patch cords	1 pc
NO IMAGE	MVPC**-HW	Mini WECO patch cords	1 pc
NO IMAGE	BCJ-MVP	BNC (female) to Mini-WECO plug conversion adapter	10 pcs
	BET-BNC	BNC extraction tool	1 pc
NO IMAGE	PH50A	Patch cord holder for MVPC**	1 pc
NO IMAGE	MVJ-DC	Dust cap for MDVJ (black)	40 pcs
NO IMAGE	MJ2-M32-*U-***	Unloaded panels	1 pc
NO IMAGE	VJ2-M32-4U	Unloaded panels	1 pc







Product Specifications  
(32MD-ST-2U)

1/1  
SAL173E  
Ver 1.1

*CANARE Electric Co., Ltd.*

1. Scope This specification covers the performance of Video Patchbay Assemblies.

2. General Specifications

(1) Product Name EIA 2U (32ch) Video Patchbay

(2) Model Name and Weight

Model Name	Weight	
	NET (kg)	GROSS (kg)
32MD-ST-2U	3.9	4.8

※GROSS weight comes to the product with a carton package.

(3) Applicable Standards EIA310

(4) Configuration As shown in Fig LL173E.

(5) Packaging A carton box per one merchandise being put into plastic bag.  
(The Box Dimensions: L560 x W195 x H118mm)

(6) Video Jack MDVJ-STW

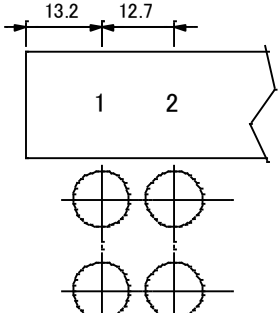
3. Characteristics Please see the individual specifications for undescribed below.

3.1 Appearance

Item	Characteristics	Test methods
Assembled conditions	Not particular about defect parts and stripped head.	Visual inspection.
Stickers	The accurate text and placed at right position.	Visual inspection.
Conditions on finishing	No scratch, dirtiness, and uneven paint.	Visual inspection.

4. Reference

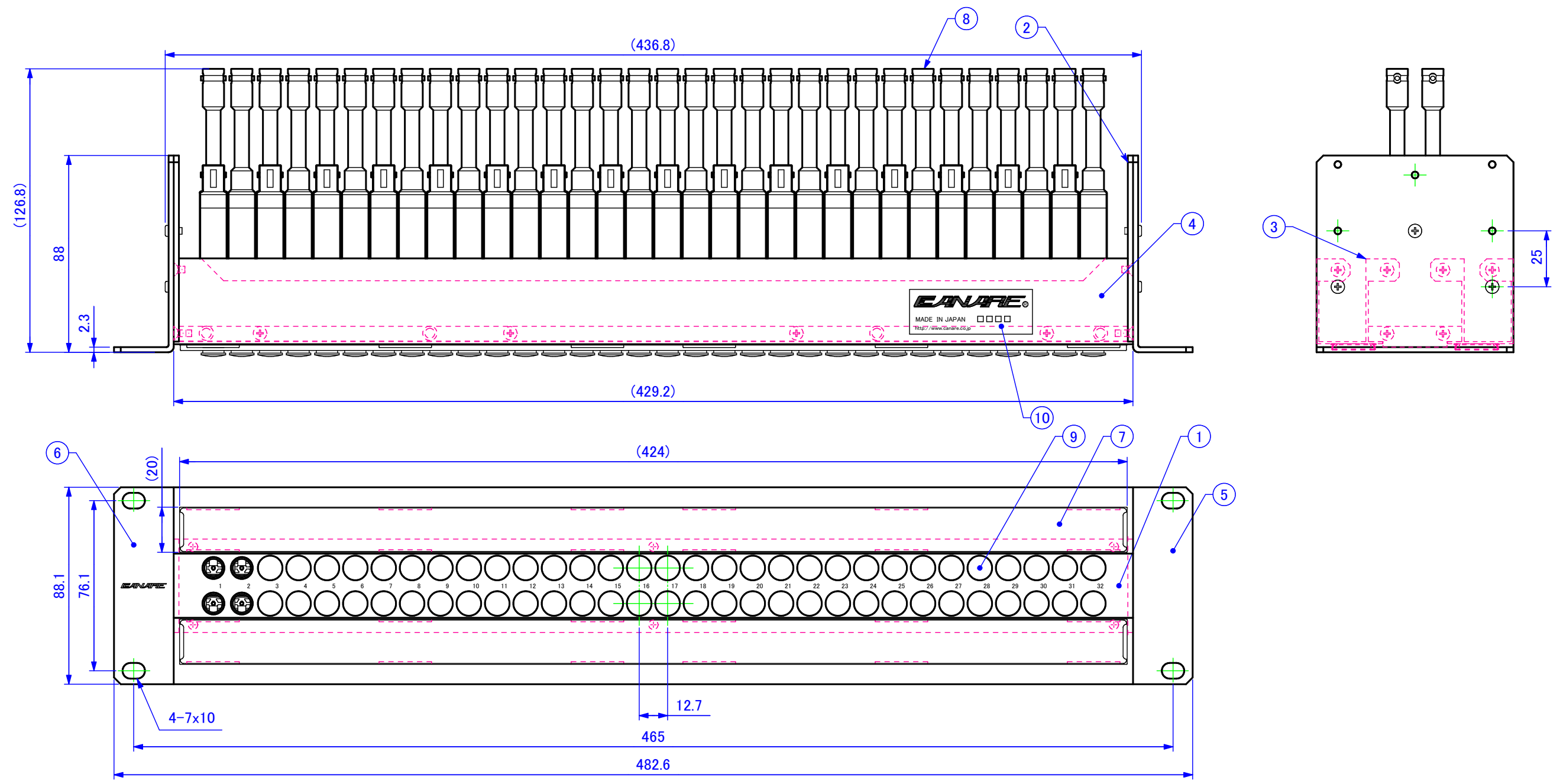
4.1 Designation Strip

	<p>To make the designation strips properly, please see the following:</p> <ul style="list-style-type: none"> <li>-&gt; We recommend to use Kent paper of its thickness maximum of 0.2mm. The thicker paper may not fit with the clear cover part.</li> <li>-&gt; The height of letters (font) should be 3mm as default. Additional adjustments might be necessary depending on total letters/words and in case of multiple 2 rows.</li> <li>-&gt; Refer to the left drawing for the detailed letter format.</li> <li>-&gt; Cut the printed paper for strip as 420x 18.4mm.</li> </ul>
---	---

4.2 Surface treatment of panel

- Painting matte black (Munsell Color N2.8 equivalency, semi gross.)

Attention) Color-matching and a state of shine with the goods by all means.



10	Label	A-NP31	1	Aluminum tape
9	Dust Cap	MVJ-DC	64	CANARE /black
8	Dual Video Jack	MDVJ-W	32	CANARE /Cross countersunk head M3x10 SUS
7	Card Rail	M-DSR04	2	Alloy Steel (black) /A-SM25N (Cross countersunk head M2.5x6)
	Card Cover	M-DSC03	2	PVC (clear)
	Card	M-DSK03	2	420x18.4 t0.2
6	Bracket	M-MA2U05	1	Alloy Steel (black) t2.3 /Cross binding head M3x6 Fe/Zn/CM (black)
5	Bracket	M-MA2U04	1	Alloy Steel (black) t2.3 /Cross binding head M3x6 Fe/Zn/CM (black)
4	Reinforcement	M-FP05	2	Alloy Steel (black) t1.2 /Cross countersunk head M3x5 Fe/Ni /Cross countersunk head M2.5x6 Fe/Zn/CM (black)
3	Reinforcement	M-FP02	2	Alloy Steel (black) t1.0 /Cross countersunk head M3x5 Fe/Ni
2	Side Panel	M-SP2U03	2	Alloy Steel (black) t2.3
1	Connector Panel	M-CP1UV10	1	Nylon (black) /Cross countersunk head M3x8 Fe/Zn/CM (black)
ITEM	DESCRIPTION	P/N	QTY.	REMARKS

<Accessories>  
 Cross recessed binding head M5x15 Ep-Fe/Zn/CM black 4 pcs.  
 Plain Washers 5x12x1 Polycarbonate clear 4 pcs.  
 Number Label A-NP01 yellow(1~32) 1 pcs.

TITEL	EIA 2U (32ch) VIDEO PATCHBAY	PJTN	UNIT	SCALE	TOL.	DATE	Ver	MODEL	DRW.No.
			mm	1:2	-	2015-11-06	1.4	32MD-ST-2U	LL173E

Product Specifications  
(32MD-ST)

1/1  
SAL170E  
Ver 1.0  
**CANARE Electric Co., Ltd.**

1. Scope This specification covers the performance of Video Patchbay Assemblies.

2. General Specifications

(1) Product Name EIA 1U (32ch) Video Patchbay

(2) Model Name and Weight

Model Name	Weight	
	NET (kg)	GROSS (kg)
32MD-ST	2.9	3.6

※GROSS weight comes to the product with a carton package.

(3) Applicable Standards EIA310

(4) Configuration As shown in Fig LL170E.

(5) Packaging A carton box per one merchandise being put into plastic bag.  
(The Box Dimensions: 625x190x70mm)

(6) Video Jack MDVJ-STW

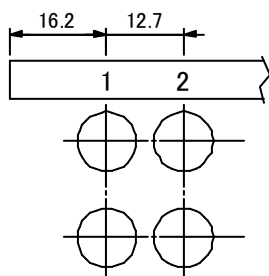
3. Characteristics Please see the individual specifications for undescribed below.

3.1 Appearance

Item	Characteristics	Test methods
Assembled conditions	Not particular about defect parts and stripped head.	Visual inspection.
Stickers	The accurate text and placed at right position.	Visual inspection.
Conditions on finishing	No scratch, dirtiness, and uneven paint.	Visual inspection.

4. Reference

4.1 Designation Strip



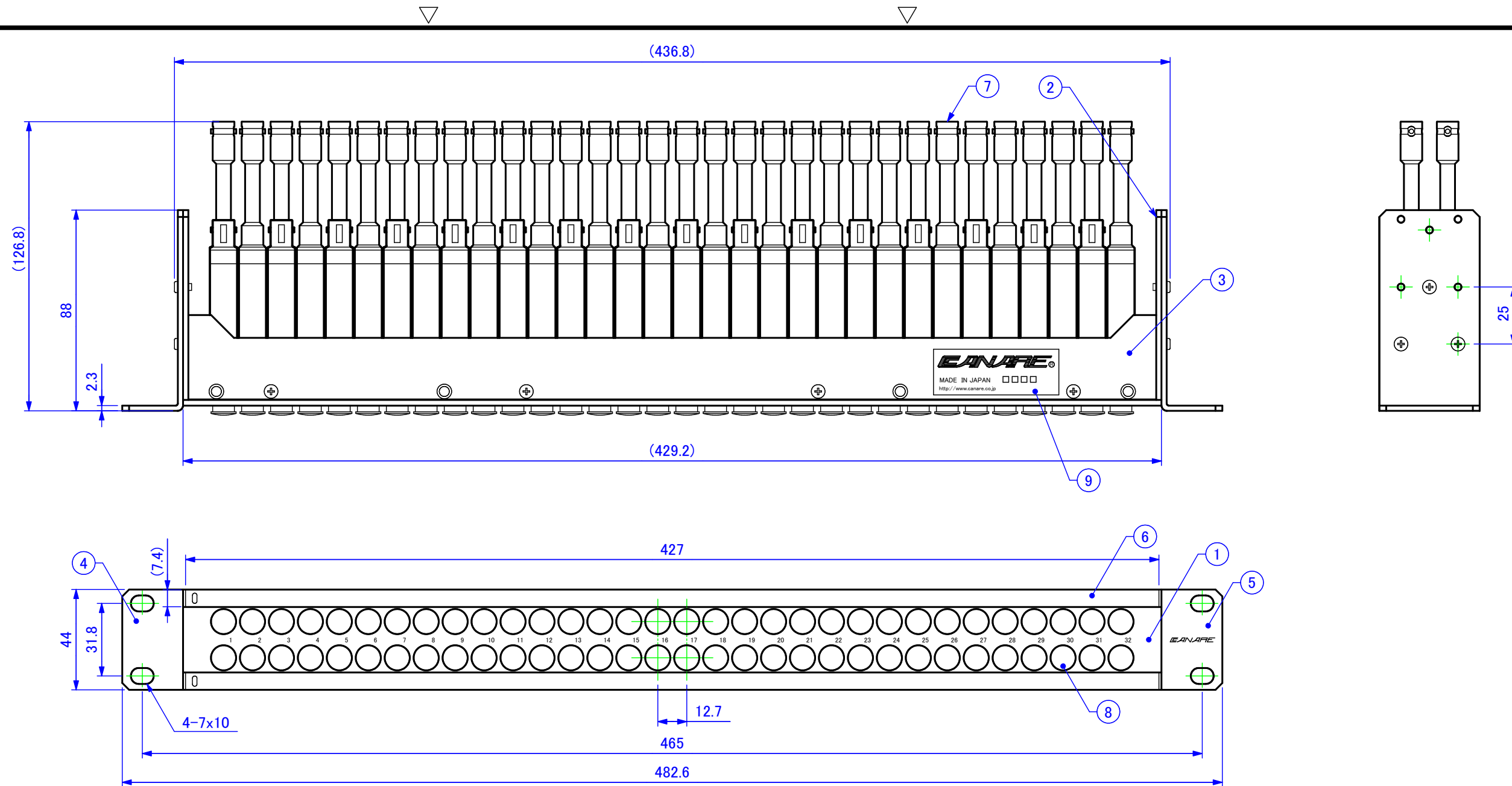
To make the designation strips properly, please see the following:

- > We recommend to use Kent paper of its thickness maximum of 0.2mm. The thicker paper may not fit with the clear cover part.
- > The height of letters (font) should be 3mm as default. Additional adjustments might be necessary depending on total letters/words and in case of multiple 2 rows.
- > Refer to the left drawing for the detailed letter format.
- > Cut the printed paper for strip as 426x 6.2mm.

4.2 Surface treatment of panel

- Painting matte black (Munsell Color N2.8 equivalency, semi gross.)

Attention) Color-matching and a state of shine with the goods by all means.



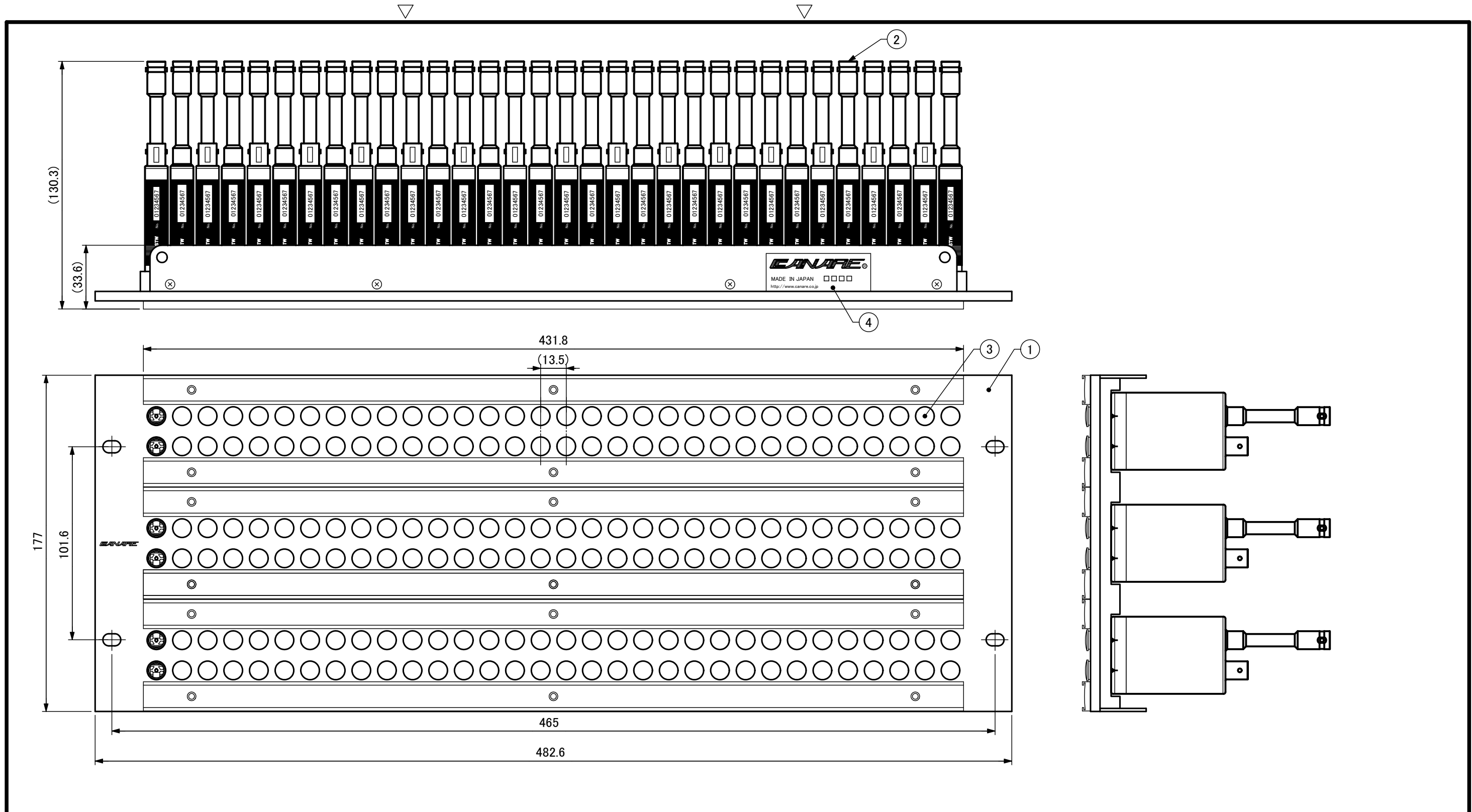
9	Label	A-NP31	1	Aluminum tape
8	Dust Cap	MVJ-DC	64	CANARE /Black
7	Dual Video Jack	MDVJ-STW	32	CANARE /Cross countersunk head M3x10 SUS
6	Card Rail	M-DSR01	2	Alloy Steel (black) /A-SM25N (Cross countersunk head M2.5x6)
	Card Cover	M-DSC01	2	PC (clear)
	Card	M-DSK01	2	426x6.2 t0.2
5	Bracket	M-MA1U03	1	Alloy Steel (black) t2.3 /Cross binding head M3x6 Fe/Zn/CM (black)
4	Bracket	M-MA1U01	1	Alloy Steel (black) t2.3 /Cross binding head M3x6 Fe/Zn/CM (black)
3	Reinforcement	M-FP02	2	Alloy Steel (black) t1.0 /Cross countersunk head M3x5 Fe/Ni
2	Side Panel	M-SP1U01	2	Alloy Steel (black) t2.3
1	Connector Panel	M-CP1UV10	1	Nylon (black) /Cross countersunk head M3x8 Fe/Zn/CM (black)
ITEM	DESCRIPTION	P/N	QTY.	REMARKS

<Accessories>

Cross recessed binding head M5x15 Ep-Fe/Zn/CM black 4 pcs.  
 Plain Washers 5x12x1 Polycarbonate clear 4 pcs.  
 Number Label A-NP01 yellow(1~32) 1 pcs.

図名	EIA 1U (32ch) VIDEO PATCHBAY	図法		単位	mm	尺度	1:2	許容差	-	日付	2015-11-06	Ver	1.3	型名	32MD-ST	図番	LL170E
----	---------------------------------	----	--	----	----	----	-----	-----	---	----	------------	-----	-----	----	---------	----	--------

**CANARE**



<Model Name>

Model	Dual Video Jack
32MD-ST-4U	MDVJ-W (Normal through jack)
32MD-ST-4U	MDVJ-S (Straight through jack)

※The top is a figure when MDVJ-STW is used.

4	Label	A-NP31	1	Aluminum tape
3	Dust Cap	MVJ-DC	192	CANARE /Yellow
2	Dual Video Jack	See the right.	96	CANARE /Cross countersunk head M3x14 SUS
1	Video Panel	VJ2-M32-4U	1	AUDIO ACCESSORIES
ITEM	DESCRIPTION	P/N	QTY.	REMARKS

<Accessories>

- Card Cover 431.8x13.2 PC(clear) t0.2 6pcs.
- Card 431.8x13.2 t0.3 6pcs.
- 10-32x5/8 phillips pan head machine screw, steel, zinc black trivalent chromate RoHS 4pcs.
- Cross recessed binding head M5x15 Fe/Zn/CM black 4pcs.
- #10 black fiber washer RoHS 4pcs.
- Plain Washers 5x12x1 Polycarbonate clear 4pcs.
- Number Label A-NP01 yellow(1~32) 3 pcs.

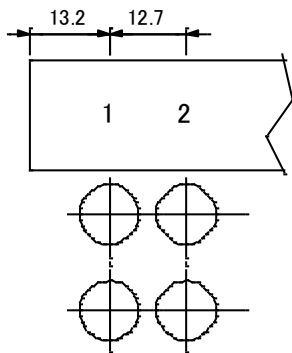
TITLE	EIA 4U (32ch) VIDEO PATCHBAY	PJTN	UNIT	SCALE	TOL.	DATE	Ver 1.1	MODEL	DRW.No.
			mm	1:2	-	2008-12-09		32MD-ST*-4U	LL195E





#### 4. Reference

##### 4.1 Designation strip



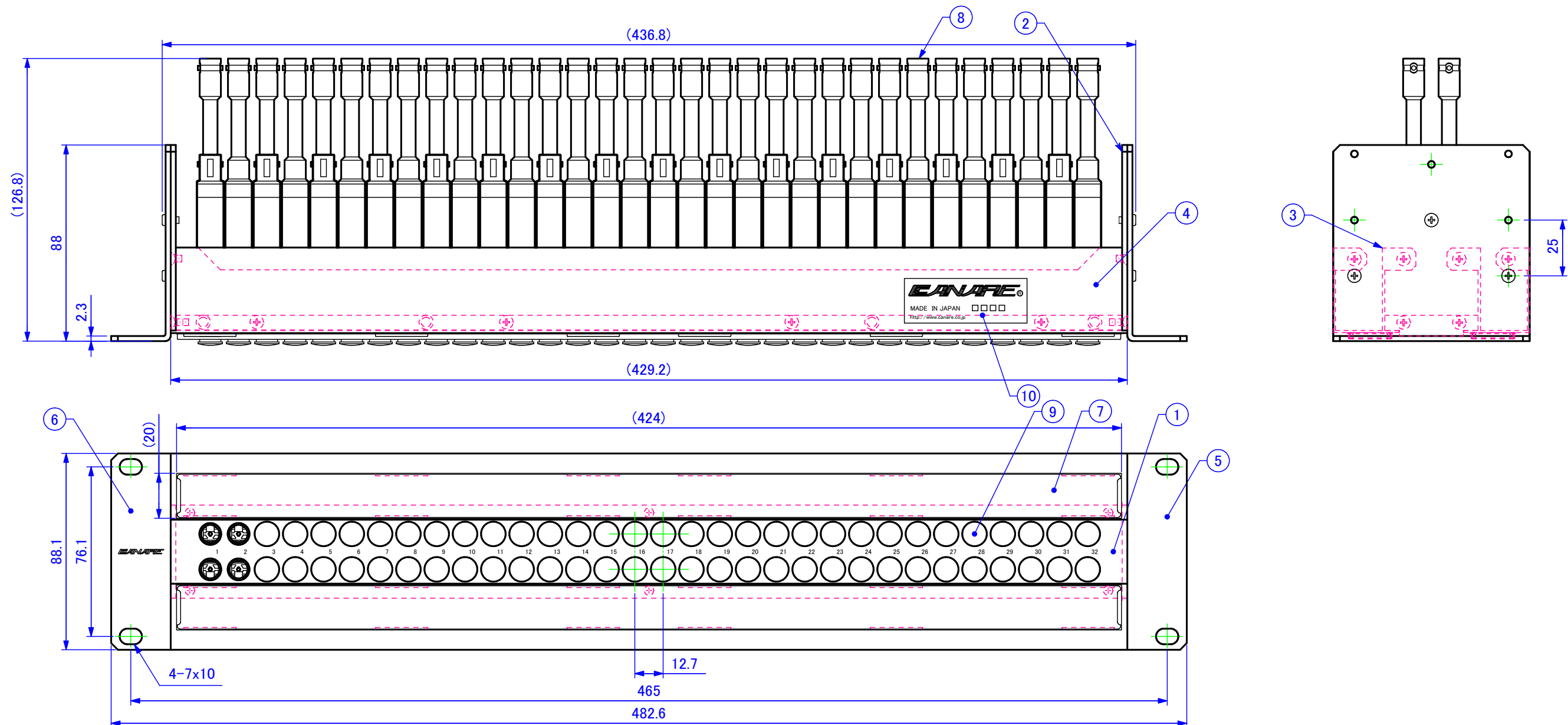
To make the designation strips properly, please see the following:

- > We recommend to use Kent paper of its thickness maximum of 0.2mm. The thicker paper may not fit with the clear cover part.
- > The height of letters (font) should be 3mm as default. Additional adjustments might be necessary depending on total letters/words and in case of multiple 2 rows.
- > Refer to the left drawing for the detailed letter format.
- > Cut the printed paper for strip as 420x 18.4mm.

##### 4.2 Surface treatment of panel

- Painting matte black (Munsell Color N2.8 equivalency, semi gross.)

Attention) Color-matching and a state of shine with the goods by all means.



<Model>

3 2 M D - S T \* - \* - 2 U

Connector Panel Color Blank: black ※Note 1: Black used M-CP1UV10.  
 1: brown 4: yellow 7: purple  
 2: red 5: green 8: gray  
 3: orange 6: blue 9: white

Dual Video Jack Blank: MDVJ-W (Normal through jack)  
 S: MDVJ-S (Straight through jack)

ex) 32MD-ST5-2U  
 Dual Video Jack : MDVJ-S (Straight through jack)  
 Connector Panel Color : green

<Accessories>

Cross recessed binding head M5x15 Ep-Fe/Zn/CM black 4 pcs.  
 Plain Washers 5x12x1 Polycarbonate clear 4 pcs.  
 Number Label A-NP01 yellow(1~32) 1 pcs.

10	Label	A-NP31	1	Aluminum tape
9	Dust Cap	MVJ-DC	64	CANARE /black
8	Dual Video Jack	See the right.	32	CANARE /Cross countersunk head M3x10 SUS
7	Card Rail	M-DSR04	2	Alloy Steel (black) /A-SM25N (Cross countersunk head M2.5x6)
	Card Cover	M-DSC03	2	PVC (clear)
	Card	M-DSK03	2	420x18.4 t0.2
6	Bracket	M-MA2U05	1	Alloy Steel (black) t2.3 /Cross binding head M3x6 Fe/Zn/CM (black)
5	Bracket	M-MA2U04	1	Alloy Steel (black) t2.3 /Cross binding head M3x6 Fe/Zn/CM (black)
4	Reinforcement	M-FP05	2	Alloy Steel (black) t1.2 /Cross countersunk head M3x5 Fe/Ni /Cross countersunk head M2.5x6 Fe/Zn/CM (black)
3	Reinforcement	M-FP02	2	Alloy Steel (black) t1.0 /Cross countersunk head M3x5 Fe/Ni
2	Side Panel	M-SP2U03	2	Alloy Steel (black) t2.3
1	Connector Panel	M-CP1UV11 Note1	1	Nylon (Color:See the right.) /Cross countersunk head M3x8 Fe/Zn/CM (black)
ITEM	DESCRIPTION	P/N	QTY.	REMARKS

TITLE	EIA 2U (32ch) VIDEO PATCHBAY	PJTN	UNIT	SCALE	TOL.	DATE	Ver 1.3	MODEL	DRW.No.
			mm	1:2	-	2015-11-06		32MD-ST*-*-2U	LL174E

**CANARE**

Product Specifications  
(32MD-ST\* - \*)

1/2  
SAL171E  
Ver 1.0

CANARE Electric Co., Ltd.

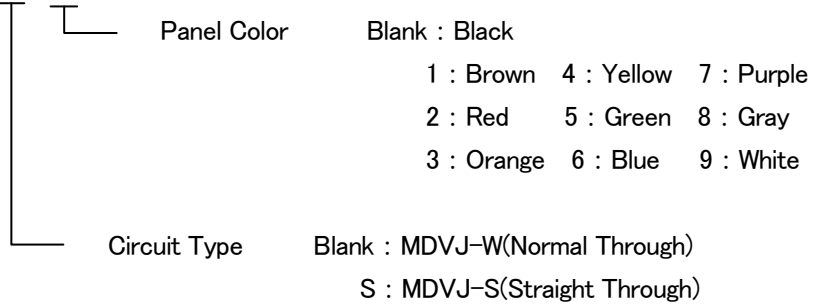
1. Scope This specification covers the performance of Video Patch Panel Assemblies.

2. General Specifications

(1) Product Name EIA 1U (32ch) Video Patchbay

(2) Model Name and Weight

32MD-ST\* - \*



Model Name	Weight	
	NET (kg)	GROSS (kg)
32MD-ST* - *	2.9	3.6

※GROSS weight comes to the product with a carton package.

(3) Applicable Standards EIA310

(4) Configuration As shown in Fig LL171E.

(5) Packaging A carton box per one merchandise being put into plastic bag.  
(The Box Dimensions: 625x190x70mm)

(6) Video Jack MDVJ-STW, or MDVJ-STS

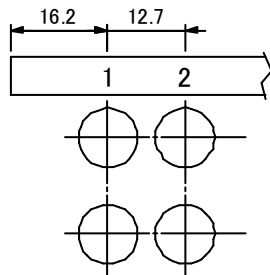
3. Characteristics Please see the individual specifications for undescribed below.

3.1 Appearance

Item	Characteristics	Conditions
Assembled conditions	Not particular about defect parts and stripped head.	Visual inspection.
Stickers	The accurate text and placed at right position.	Visual inspection.
Conditions on finishing	No scratch, dirtiness, and uneven paint.	Visual inspection.

#### 4. Reference

##### 4.1 Designation strip



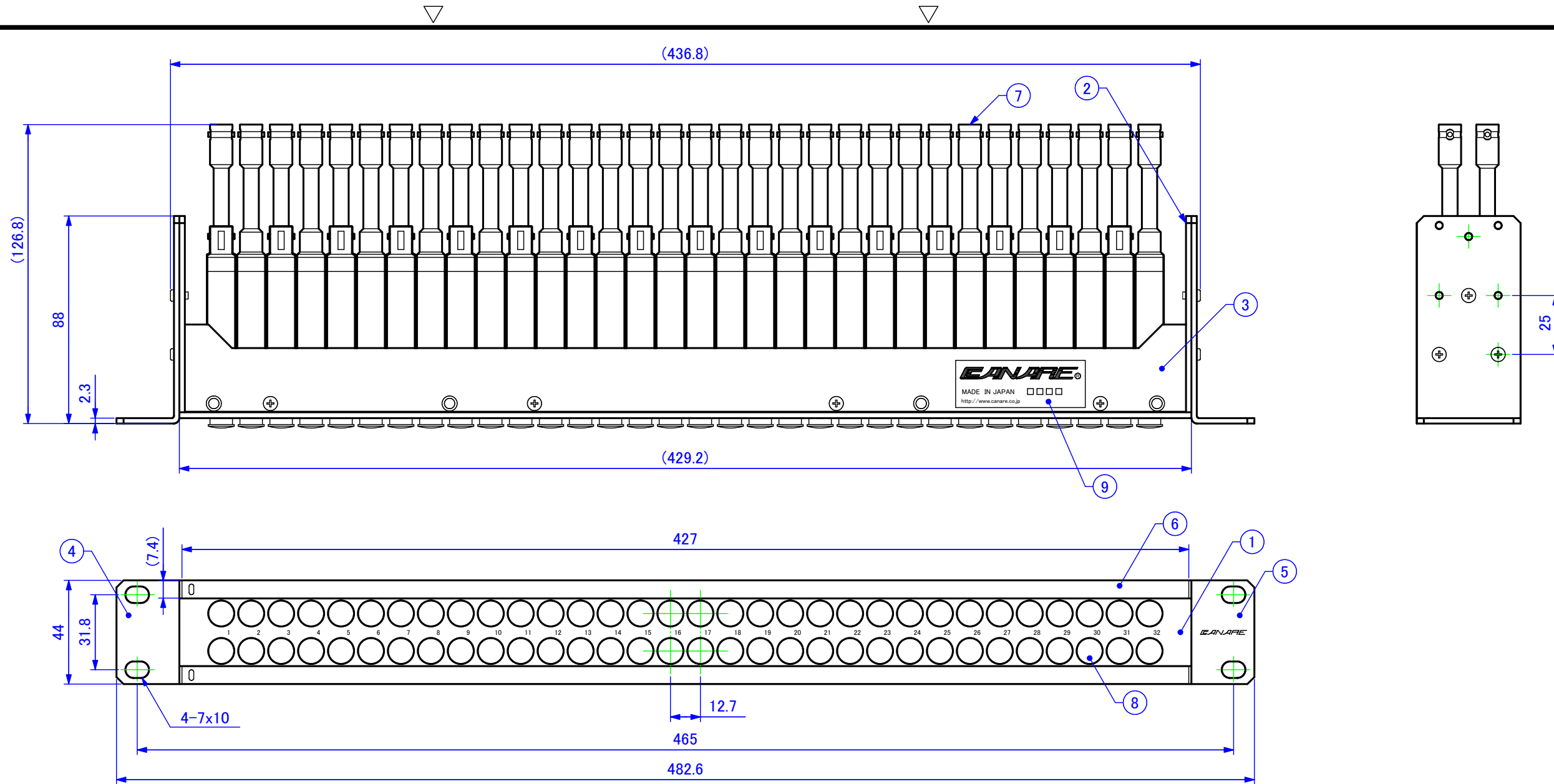
To make the designation strips properly, please see the following:

- > We recommend to use Kent paper of its thickness maximum of 0.2mm. The thicker paper may not fit with the clear cover part.
- > The height of letters (font) should be 3mm as default. Additional adjustments might be necessary depending on total letters/words and in case of multiple 2 rows.
- > Refer to the left drawing for the detailed letter format.
- > Cut the printed paper for strip as 426x 6.2mm.

##### 4.2 Surface treatment of panel

- Painting matte black (Munsell Color N2.8 equivalency, semi gloss.)

Attention) Color-matching and a state of shine with the goods by all means.



<Model>

3 2 M D - S T \* - \*

Connector Panel Color Blank: black ※Note 1: Black used M-CP1UV10.  
 1: brown 4: yellow 7: purple  
 2: red 5: green 8: gray  
 3: orange 6: blue 9: white

※Note 2

Dual Video Jack Blank: MDVJ-STW (Normal through jack)  
 S: MDVJ-ST (Straight through jack)

ex) 32MD-ST-5

Dual Video Jack : MDVJ-ST (Straight through jack)  
 Connector Panel Color : green

<Accessories>

Cross recessed binding head M5x15 Ep-Fe/Zn/CM black 4 pcs.  
 Plain Washers 5x12x1 Polycarbonate clear 4 pcs.  
 Number Label A-NP01 yellow(1~32) 1 pcs.

9	Label	A-NP31	1	Aluminum tape
8	Dust Cap	MVJ-DC	64	CANARE /Black
7	Dual Video Jack	See the righth. Note2	32	CANARE /Cross countersunk head M3x10 SUS
6	Card Rail	M-DSR01	2	Alloy Steel (black) /A-SM25N (Cross countersunk head M2.5x6)
	Card Cover	M-DSC01	2	PC (clear)
	Card	M-DSK01	2	426x6.2 t0.2
5	Bracket	M-MA1U03	1	Alloy Steel (black) t2.3 /Cross binding head M3x6 Fe/Zn/CM (black)
4	Bracket	M-MA1U01	1	Alloy Steel (black) t2.3 /Cross binding head M3x6 Fe/Zn/CM (black)
3	Reinforcement	M-FP02	2	Alloy Steel (black) t1.0 /Cross countersunk head M3x5 Fe/Ni
2	Side Panel	M-SP1U01	2	Alloy Steel (black) t2.3
1	Connector Panel	M-CP1UV11 Note1	1	Nylon (Color: See the right.) /Cross countersunk head M3x8 Fe/Zn/CM (black)
ITEM	DESCRIPTION	P/N	QTY.	REMARKS

TITLE	EIA 1U (32ch) VIDEO PATCHBAY	PJTN	UNIT	SCALE	TOL.	DATE	Ver 1.3	MODEL	DRW .No.
			mm	1:2	-	2015-11-06		32MD-ST**	LL171E

**CANARE**