

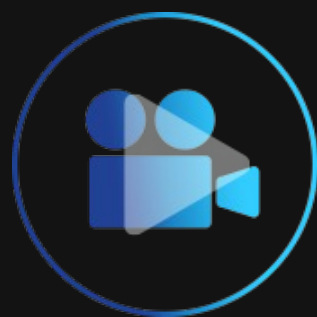
Unleashing the next generation

# TriCaster® 2 Elite



The TriCaster 2 Elite is the most complete video production platform available today, and sets a new platinum standard for how much you can achieve with a single system.

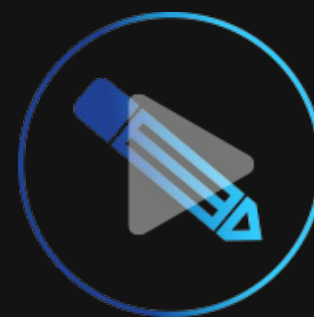
## Check Out Our Videos



**Inputs &  
Live Call Connect**



**Production  
Capabilities**



**Outputs & AV  
Routing Capabilities**

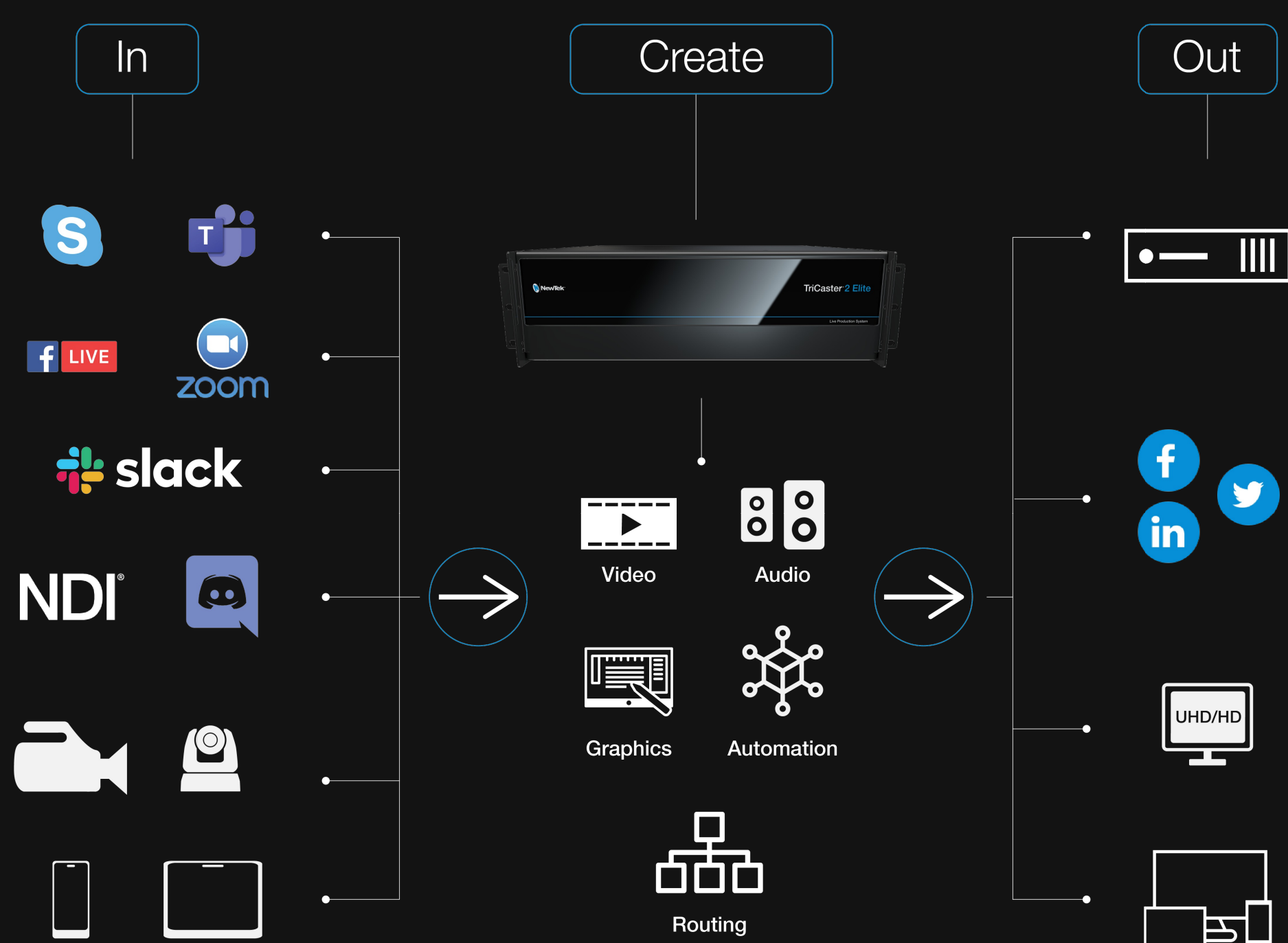
**Player error**

The player is having trouble. We'll have it back up and running as soon as possible.

**BOOK YOUR LIVE ONLINE DEMO TODAY**

[Sign Up](#)

## TriCaster 2 Elite Workflow



**LEARN MORE AND GET EXPERT ADVICE**

[Sign Up](#)

**“The system offers high flexibility when it comes to the configuration of video and audio inputs and outputs over multiple signal standards, including remote protocols and remote caller management.”**

**Rudi Buchner, Middle East Managing Partner  
– 3Monkeys**

## I Want To

**Check Out  
NewTek TV**

**Speak With A  
Solutions  
Expert**

**Explore  
All Features**

## Customer Stories:



### California Streamin' With TriCaster® and Brian Sheil

Imagine a picturesque place that's sunny and pleasant year-round, where live music is often performed on gorgeous beaches near nightlife, bars, and a world-famous comedy club. While this may sound like a distant dream for most, for Brian Sheil it's a dream come true.



### United Kingdom Supreme Court - Live Streaming with TriCaster® TC1

Despite hundreds of years of judicial history, The Supreme Court of the United Kingdom is a relatively new institution. Previously the Justices sat as Law Lords on the Appellate Committee of the House of Lords in Parliament.



### Edwards Lifesciences' 'Hearts' Live Video Production In-House With NDI®

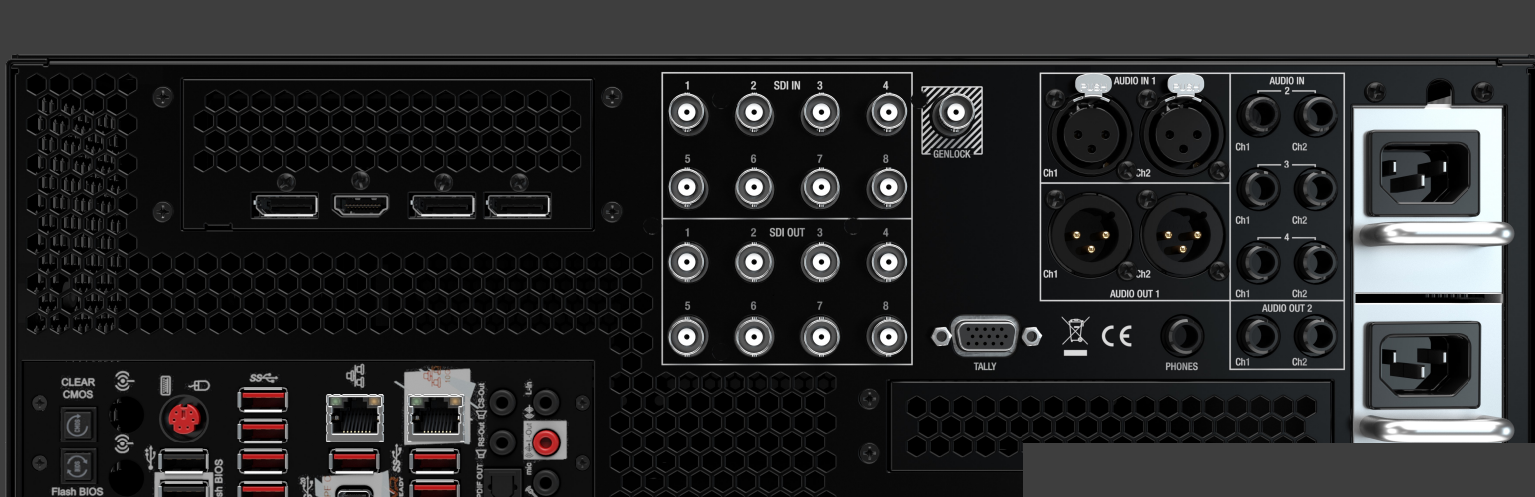
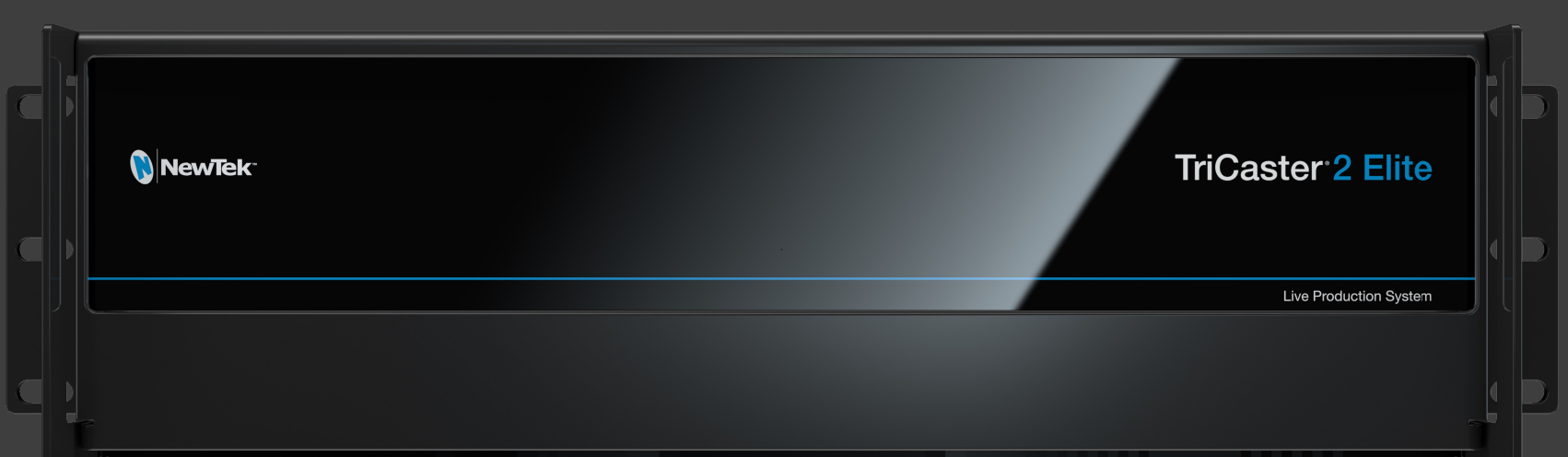
Edwards Lifesciences is a global leader in the treatment of structural heart disease and treating of the critically ill. Their biggest technology area is in the area of heart valve replacement including being able to replace a person's heart valve without open heart surgery, which is quite transformational.



# Technical Specifications



Video Input	32 x simultaneous external video inputs, supporting any combination of compatible sources in resolutions up to UHD at frame rates up to 60fps (2160p 59.94)
Network Video Input	32 x IP inputs via NDI®, resolution-independent, with support for key and fill
SDI Video Input <sup>1</sup>	<div>8 x 3G/HD/SD-SDI connections supporting video input in any combination of standard formats, resolutions, and frame rates<sup>2</sup></div> <div><ul style="list-style-type: none"><li>1080p: 59.94, 50, 29.97, 25</li><li>1080i: 59.94, 50</li><li>720p: 59.94, 50, 29.97, 25</li><li>576i 50</li><li>480i 59.94</li></ul></div> <div><sup>1</sup> Optionally supports up to 32 simultaneous 3G/HD/SD-SDI video inputs or quad-link 3G-SDI video inputs (4K UHD) via network integration with NewTek NC1 conversion modules <sup>2</sup> Available frame rates determined by session video standard (NTSC or PAL)</div>
PTZ	Support for up to 32 simultaneous Pan-Tilt-Zoom (PTZ) robotic cameras via serial and network protocols, including RS232, RS422 and IP, with integrated controls and preset system
Conference Calling	Support for multiple simultaneous video call inputs with Microsoft Skype TX, Microsoft Teams™, Zoom Meetings™, Slack, Discord™, and Tencent™ software integration using the Live Call Connect feature,
Video Output	Configurable for up to 8 independent HD or 2 UHD video mix outputs, with simultaneous delivery via IP and SDI
Network Video Output	<div>48 x IP outputs via NDI® (HD and SD sessions only)</div> <div><ul style="list-style-type: none"><li>8 x video mix outputs in resolutions up to 1080p at frame rates up to 60fps (1080p 59.94) or 2 x UHD video mix outputs at up to 60 frames per second (2160p 59.94)</li><li>8 x direct IP source outputs via NDI® translation of local SDI inputs or 2 x upconverted UHD outputs at up to 60 frames per second (2160p 59.94)</li><li>4 x direct IP source outputs via NDI® translation of media players, with support for embedded alpha channel</li><li>15 x direct IP source outputs via NDI® translation of media buffers, with support for embedded alpha channel</li><li>3 x Multiviewer outputs (if 3 monitors are connected). 4K support on 2x Multiviewer outputs while the 3rd outputs in HD</li><li>1 x User Interface with dedicated multiviewer</li><li>1 x teleprompter output (LiveStory™ Creator)</li><li>8 x selectable IP outputs via internal NDI® matrix router</li></ul></div>
SDI Video Output	<div>8 x 3G/HD/SD-SDI connections, optionally configurable for:</div> <div><ul style="list-style-type: none"><li>8 x independent 3G/HD/SD video mix outputs supporting standard NTSC and PAL formats, resolutions, and frame rates<sup>3</sup></li><li>2 x UHD video mix output via 3G-SDI quad-link grouping, supporting frame rates up to 60fps (2160p 59.94)</li></ul></div> <div><sup>3</sup> Available frame rates determined by session video standard (NTSC or PAL)</div>
Stream Output	2 x resolution-independent streaming video outputs, independently configurable, with simultaneous stream recording. Support for SRT streaming has been enabled.
Multiviewer Output	<div>4 x multiviewer outputs supporting standard display resolutions, using any combination of available connections. Support for 4K on 2x DisplayPorts</div> <div><ul style="list-style-type: none"><li>1 x HDMI</li><li>3 x DisplayPort</li></ul></div>
Mix/Effect Buses (M/E)	<div>8 x M/E buses supporting video re-entry</div> <div><ul style="list-style-type: none"><li>1 x Mix/Effect channel per bus with support for up to 4 sources</li><li>4 x KEY layers per bus</li><li>9 x memory slots per bus</li></ul></div> <div>1 x PREVIZ configuration and preview bus</div>
DSK Channels	4 x DSK channels
Media	<div>5 x media players</div> <div><ul style="list-style-type: none"><li>4 x DDR</li><li>1 x Sound</li></ul></div> <div>15 x media buffers</div> <div><ul style="list-style-type: none"><li>10 x animation buffers with GIF support</li><li>5 x graphic buffers</li></ul></div>
Keyers	<div>Integrated LiveMatte™ chroma and luma keying technology on all source channels and M/E buses</div> <div><ul style="list-style-type: none"><li>32 x input keyers</li><li>4 x media player keyers</li><li>8 x M/E keyers</li><li>1 x PREVIZ keyer</li><li>15 x buffer keyers</li></ul></div>
COMPs	<div>Integrated video composition engine on the switcher and each M/E bus to create, store, and apply layer configurations and DVE-style motion sequences</div> <div><ul style="list-style-type: none"><li>16 x configurable COMP presets per bus</li></ul></div>
Virtual Sets	Integrated LiveSet™ technology with 30+ live virtual sets and box effects included
DataLink	Integrated DataLink™ technology enabling real-time, automated data input from internal and external sources, including webpages, spreadsheets, scoreboards, databases, RSS feeds, watch files, XML, CSV, ASCII and more
Macros	<div>Record, store, edit and automate commands and user-configured operation sequences</div> <div><ul style="list-style-type: none"><li>Attach to control panel buttons, keyboard shortcuts, hotspots, MIDI and X-keys® buttons or GPI triggers</li><li>Attach to internal events and state changes, including audio, media playback, tally and specific switcher actions</li><li>Supports control via web-based interface</li></ul></div>
Recording	<div>32 x total video recording channels</div> <div><ul style="list-style-type: none"><li>8 x configurable M/E channels for HD or 2 x for UHD</li><li>8 x physical SDI inputs</li><li>4 x DDR's</li><li>2 x streaming encoders</li><li>Support for growing file playback from DDR's</li><li>Instant Replay capability on each input</li><li>32 x total configurable inputs</li></ul></div>
Storage	<div>4TB Media Storage (4 x 1 TB SSD in RAID 0)</div> <div><ul style="list-style-type: none"><li>Quantity varies by format, resolution and file specification</li><li>Supports recording to external storage via 7 USB 3.2 type A, and 1 USB 3.2 type C, 1 USB 2.0 2(Gen2, Type A)</li><li>Supports shared storage integration and third-party partner solutions</li></ul></div>
Grab	Grab full resolution, deinterlaced still images from external video sources and outputs
Export	Export video and image files to social media, FTP, local or external volumes, and network servers, with optional transcoding
Audio	<div>16 external audio inputs supporting 8 channels each</div> <div>Integrated multi-channel audio mixer with support for 8-channel audio, DSPs and 4x8x8 audio input routing</div>
Local Audio Input	<ul style="list-style-type: none"><li>8 x SDI embedded</li><li>1 x Balanced XLR stereo pair (Line)</li><li>3 x Balanced 1/4" stereo pairs (Line)</li></ul>
Local Audio Output	<ul style="list-style-type: none"><li>8 x SDI Embedded</li><li>1 x Balanced XLR stereo pair</li><li>1 x Balanced 1/4" stereo pair</li><li>1 x Stereo 1/4" (phones)</li></ul>
Network Audio	<ul style="list-style-type: none"><li>Native support for network audio input and output via NDI®</li><li>Embedded audio supported for all NDI®input and output video signals</li><li>Integrated support<sup>5</sup> for Dante™ networking protocol from Audinate®</li><li>Support for AES67 protocol via compatible WDM audio drivers<sup>6</sup></li></ul> <div><sup>5</sup> Requires Dante Virtual Soundcard license from Audinate (sold separately)</div> <div><sup>6</sup> Requires third-party virtual sound card license (sold separately)</div>
Supported Media File Formats	<div>Import, store, and play back multimedia files, with optional transcoding, including:</div> <div><ul style="list-style-type: none"><li>Video: AVI, DV, DVCPro, DVCProHD, FLV, F4V, H.263, H.264, MOV, MKV, MJPEG, MPEG, MP4, WMV, WebM, and more</li><li>Image: PSD, PNG, TGA, BMP, JPEG, JPEG-XR, JPEG2000, EXR, RAW, TIF, WebP, and more</li><li>Audio: AIFF, MP3, WAV, and more</li></ul></div>
Monitoring	Support for up to 4 multiviewer displays with configurable workspaces and viewports. Support for 4K on 2 multiviewers while the other 2 multiviewers output in HD.
Signal Monitoring	Integrated waveform and vectorscope, full field rate with digital calibration, color preview and support for ITU-R Rec. 709
Processing	<ul style="list-style-type: none"><li>Video: Floating Point YCbCr +A 4:4:4:4</li><li>Audio: Floating Point, 96 kHz</li></ul>
Throughput Latency	~1.0-1.5 frames
A/V Standards	<ul style="list-style-type: none"><li>UHD video conforms to SMPTE 2036 (UHDTV1 using Square Division Quad Split)</li><li>3G-SDI video conforms to SMPTE 424M (Level A)</li><li>HD-SDI video conforms to SMPTE 292M</li><li>SD video conforms to SMPTE 259M and ITU-R BT.656</li><li>Analog audio levels conform to SMPTE RP-155</li></ul>
Tally	Support for hardware tally via HD15 GPI connector, network tally via NDI®, and Blackmagic Design® SDI tally standard
Genlock	Genlock input supporting SD (Bi-level) or HD (Tri-level) reference signals
GPI	Supports GPI signals via JLCooper Electronics eBox GPI interface
MIDI	Support for standard MIDI protocol enabling third-party device control
System Drive	250GB SSD
NIC	<ul style="list-style-type: none"><li>1 x 10 GbE NIC</li><li>1 x 1 Gigabit NIC</li></ul>
System Physical	<div>3RU chassis with 650W redundant PSU and multi-tiered hardware and software fail-safe</div> <div><ul style="list-style-type: none"><li>19.0 x 5.25 x 19.57 in (48.3 x 13.34 x 49.7 cm) with rack ears attached</li><li>34 lbs (15 kg)</li></ul></div>
Subject to change without notice.	



Where to Buy  
NewTek Products

Speak with a Solutions Expert

Get expert advice on a live production workflow around NewTek systems and NDI or let us connect you with one of our local partners, our Solutions Experts are here to help.

CONNECT

NewTek has a network of resellers located around the world. All of them are experts in our product and in the video production and streaming industry.

Use this tool to find a NewTek reseller near you.

FIND A RESELLER