

75 ohm Micro Video Patchbays

48MC Series



Micro video jacks realized high density 48-channel lightweight video patchbay.

| Model | Config. | Loaded Video Jacks |
|-------|----------|---------------------------|
| 48MC | 2x48x1RU | MCVJ-W (Normal Through) |
| 48MCS | 2x48x1RU | MCVJ-S (Straight Through) |

Key Features and Benefits

- SMPTE ST 424 compliant
- 48 across, Canare exclusive micro video jacks
- Space and weight saving; beneficial to O.B. vans
- DIN 1.0/2.3 rear jacks
- Dust proof shutter
- Adjustable front panel: flat (default) or 25 mm recessed
- Included a sheet of channel designator for easy identification

Note

- Be sure to use our unique Micro Video Plug/Cord (MCVP-C25HW, MCVPC**)



Canare Micro Video Patch Cord MCVPC**

Related Products

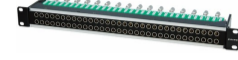
▶ [75 Ω Micro Video Jacks](#)



▶ [12G-SDI Staggered Video Patchbay](#) **12G-SDI**



▶ [75 Ω Staggered Mid-size Video Patchbays](#)



[Products Home](#)

Return Loss

| Model | DIN-DIN: Normal Through | DIN-Video: Patch Through | DIN-Self: Termination |
|--------|----------------------------|-----------------------------|--------------------------|
| MCVJ-W | ≥ 20 dB @ 3 GHz | | ≥ 10 dB @ 3 GHz |
| MCVJ-S | N/A | ≥ 20 dB @ 3 GHz | |

Isolation

| Model | Isolation |
|--------|-----------------|
| MCVJ-W | ≥ 45 dB @ 3 GHz |
| MCVJ-S | |

Normal Through

| Video Port | Routing | BNC Port |
|-------------|---------|------------------------|
| No Patch | | Signal thru as arrowed |
| Patch Upper | | Lower terminated |
| Patch Lower | | Upper terminated |
| Patch Both | | Signal thru as arrowed |

Straight Through

| Video Port | Routing | BNC Port |
|-------------|---------|------------------------|
| No Patch | | Both signal terminated |
| Patch Upper | | Lower terminated |
| Patch Lower | | Upper terminated |
| Patch Both | | Signal thru as arrowed |