

75 ohm Staggered Video Patchbays

32MCK-ST Series **12G-SDI**



The next-generation 12G-ready video patchbays with newly developed dual video jacks.

Model	Config.	Loaded Video Jacks
32MCK-ST	2x32x1RU	MCVJK-STW (Normal Through)
32MCK-STS	2x32x1RU	MCVJK-STS (Straight Through)

Key Features and Benefits

- SMPTE ST 2082-1 compliant
- 32 across, Canare exclusive video jacks
- Return loss: ≥ 4 dB @ 12 GHz, ≥ 7 dB @ 6 GHz, ≥ 10 dB @ 3 GHz
- Isolation: ≥ 45 dB @ 6 GHz
- Supports 12G/6G/3G/HD/SD-SDI
- Dust proof shutter
- Staggered BNC rear jacks
- Adjustable front panel: flat (default) or 25 mm recessed
- Included a sheet of channel designator for easy identification

Note

- Be sure to use our *unique* Micro Video Plug/Cord (**MCVP-C25HW**, **MCVPC****)



Canare Micro Video Patch Cord **MCVPC****

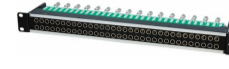
Related Products

▶ [75 Ω Staggered Video Jacks](#)

12G-SDI



▶ [75 Ω Staggered Mid-size Video Patchbays](#)



▶ [75 Ω Micro Video Patchbays](#)



[Products Home](#)

Return Loss

Model	BNC-BNC: Normal Through	BNC-Video: Patch Through	BNC-Self: Termination
MCVJK-STW		≥ 15 dB @ 1.5 GHz	
		≥ 10 dB @ 3 GHz	
		≥ 7 dB @ 6 GHz	
		≥ 4 dB @ 12 GHz	
MCVJK-STS	N/A	≥ 15 dB @ 1.5 GHz	
		≥ 10 dB @ 3 GHz	
		≥ 7 dB @ 6 GHz	
		≥ 4 dB @ 12 GHz	

Isolation

Model	Isolation
MCVJK-STW	≥ 45 dB @ 6 GHz
MCVJK-STS	

Normal Through

Video Port	Routing	BNC Port
No Patch		Signal thru as arrowed
Patch Upper		Lower terminated
Patch Lower		Upper terminated
Patch Both		Signal thru as arrowed

Straight Through

Video Port	Routing	BNC Port
No Patch		Both signal terminated
Patch Upper		Lower terminated
Patch Lower		Upper terminated
Patch Both		Signal thru as arrowed