

SL-SERIES NEW
CM240BSL-3G



24" High Bright HDR Multiformat LCD Monitor
2 x 3G SDI Inputs | SFP | HDMI | Ultra Light | High Bright 900 nits

General Information

Key Features

Specifications

Image gallery

Ordering info

Product Documents

24” HDR Pro LCD Monitor with 900 nits (High brightness) and Quad Mode

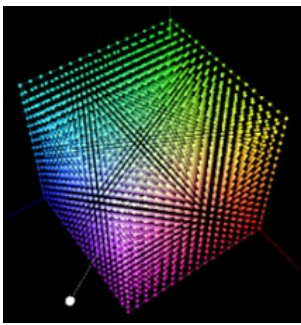
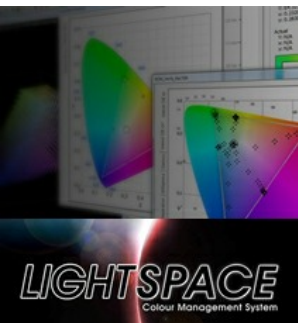
CM240BSL-3G is a new professional **High Brightness 900 cd/m2 ULTRA-Light Chassis design** LCD Monitor with 3G/HD/SD-SDI, HDMI, DVI-D, CVBS inputs and SFP Module slot for optional SFP modules (optical fiber,...) with Quad Mode integrated. With our new superior quality 12 bit image processing engine, **HDR visualization (HLG, PQ, SLOG)** options and **3D LUT** colour management options, the CM240BSL-3G accurately reproduces all standard sources. The rugged and lightweight aluminium design and wide viewing angles displays, makes it easy to use for outdoor applications, and our energy-efficient board design and LED backlight grant low temperature while working.

Get the most out of this 900 cd/m2 high brightness monitor using the Quad-Mode and all the calibration adjustments!



HDR support and 3D LUT Display Calibration

HDR visualization (HLG, PQ, SLOG) and **3D LUT** Color Management options for accurate reproduction of all standard sources (Rec709, EBU, SMPTE-C and DCI) and custom color spaces. With our **tetrahedral LUT interpolation engine** of 4.913 points (17x17x17) that offers a higher degree of precision for accurate reproduction. All monitors are factory calibrated using LightIllusion's LightSpace CMS.



SFP Modules slot, maximum flexibility

Adapt your monitors to your needs, select one of the optional SFP modules (optical fiber, HDMI,...) and add more inputs in the future! **NOW IP SMPTE-2110 and IP SMPTE-2022 AVAILABLE!**

All features you need!



New Quad-Mode makes the difference

Select between Quad View or Full Screen View of any of your sources. In Quad Mode display the 2 x 3G/HD/SD-SDI, 1 x HDMI and 1 x CVBS inputs and each quadrant can display sources with different format (1080i50Hz, 1080p25Hz,...), and can integrate up to 16 channel Audio Level Meters of embedded audio (on the 3G SDI sources), real time color Waveform and Vectorscope, Time code (on the 3G SDI sources),... Each window has image resize capability in Quad and Full Screen view, so scopes, audio Level Meters,... can be located inside or outside the image. All these adjustments can be made using the OSD menu or remotely using our Soft4Boxes Lite control software.



Quad View
(2 x 3G/HD/SD-SDI, HDMI, CVBS)



Full screen View

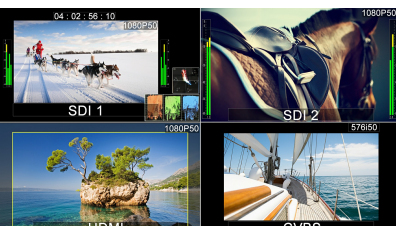


Image resize capability in Quad and Full screen View



Rugged and Lightweight Design

SL-Series have an ULTRA-lightweight and rugged aluminum chassis and direct lighting keys that can be configured with any of the adjustments of the OSD menu or to access directly to Quad-Mode or Full Screen Views. All monitors of SL-Series integrate LED backlight displays with wide viewing angles, and our energy-efficient board design that grant low temperature while working. All connectors are all down-side mounted making them real slim design, allowing to be integrated in critical space locations. All monitors from 18,5" to 23,8" are compatible with VESA 100 mount systems, and optional brackets for 19" rack and table stands can be supplied. 32" and 42" monitors are VESA 200 compatible.



S4B-SERIES NEW
CM240BSL-3G



24" High Bright HDR Multiformat LCD Monitor
2 x 3G SDI Inputs | SFP | HDMI | Ultra Light | High Bright 900 nits

General Information

Key Features

Specifications

Image gallery

Ordering info

Product Documents

- 24" High brightness LED Backlight LCD Monitor
- 3G/HD/SD-SDI Autosensing inputs with active loop through, HDMI, SFP Module slot and CVBS inputs
- Hardware based (NO Pc, NO hard-drive)
- Space-saving, fanless, energy-efficient and lightweight aluminium design
- Rugged and user friendly system for easy integration
- Wide viewing angles
- 12 bit image processing
- Quick control: Easy to use keyboard with user configurable direct keys and encoder
- Brightness, Contrast, Saturation adjustment
- Low processing delay
- Aspect Ratio Selection (4:3, 16:9)
- Gamma correction
- Backlight adjustment

- Color temperature adjustment (5600K, 6500K, 9300K and User (R, G, B Gain and Bias adjustment))
- Blue Only / Monochrome
- Markers
- Built in Audio Disembedder, 16 channel Audio Level Meters
- UMD & Tally
- Real time color Waveform and Vectorscope
- Selectable RGB, R, G, B, YCbCr, Y, Cb, Cr waveform
- Selectable transparency of all scopes and Audio level Meters
- Focus assist
- False color
- 1:1 Pixel Mapping
- Rugged and lightweight aluminium design.

Professional broadcast adjustments

These monitors have all professional features and adjustments as UMD and Tally, Blue Only, Aspect Ratio Selection, Markers, Real time color Waveform and Vectorscope per input (SDI 1 and SDI2), 16 Channel Audio Level Meters, Alarms, Timecodes, backlight and color temperature adjustment (5600K, 6500K, 9300K, and RGB Gain and Bias adjustment)... SFX-3G monitors integrate user configurable direct keys and encoder to easy navigate through the OSD menu. Any adjustment can be located in a direct key, to access functions just with a press, and keys LED lights can be turned off if required for dark environments.



HDR Pre-visualization

HDR Pre-visualization (HLG, PQ, SLOG) with tetrahedral LUT interpolation engine of 4.913 points (17x17x17)



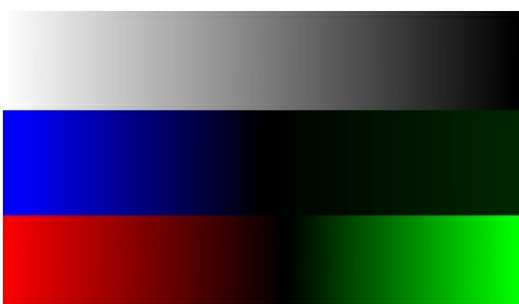
3D LUT

3D LUT Color Management options for accurate reproduction of all standard sources (Rec709, EBU, SMPTE-C and DCI) and custom color spaces



SFP Slot

Adapt your monitors to your needs, select one of the optional SFP modules (optical fiber, HDMI,...) and add more inputs in the future! **NOW IP SMPTE-2110 and IP SMPTE-2022 AVAILABLE!**



12 bit image processing

Superior quality 12 bit image processing engine that offer smooth gradients without banding.



Markers

Wide range of markers and security areas are available with line color and curtain transparency selection. A User Marker is available if any of standard markers fits your requirements.



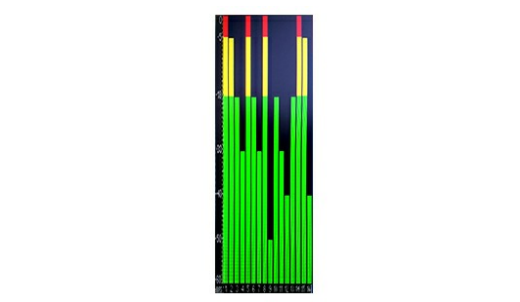
Color Temperature and Gamma Selection

Professional colorimetry broadcast adjustments, with Gamma Correction and color Temperature selection (5600K, 6500K, 9300K and user with Red, Green and Blue, Gain and Bias adjustments)



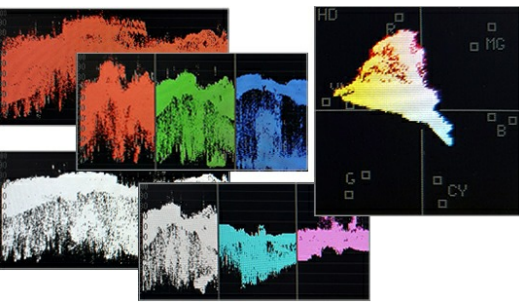
Blue, Red and Green Only, and Monochrome

Blue Only, Red Only, Green Only, Blue All, Red All, Green All, Monochrome and Inverse.



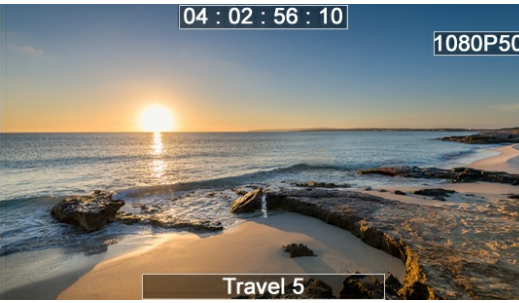
16 Channel Audio Level Meter

Display up to 16 Channel Audio Level Meters with a wide range of options (All together, Separate in pairs-odds,... Selectable Yellow and Red color level and two different sizes.



Waveform & Vectorscope

Real time color Waveform and vectorscope. Select between RGB, R, G, B, YCbCr, Y, Cb, Cr Waveform and two different sizes of scopes. Locate the scopes anywhere on the source quadrant.



Timecode and Source Format Information

On screen ATC Timecode information and Video Format Information



Alarms

On screen video and audio alarms with selectable color and time selection. No Input, Black Image, No Audio, Silence.



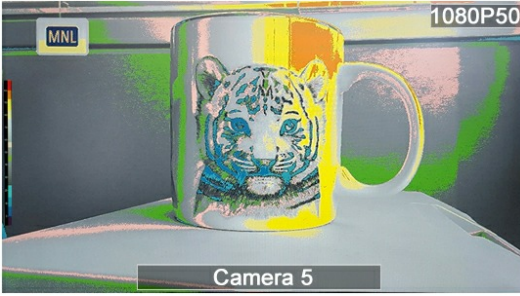
Tally and UMD

Red, Green and Yellow tally and 16 character UMD compatible with TSL 3.1 and TSL 5.0. Three tally modes available: Square, Border and UMD (all can be activated together)



Focus Assist

Ajdustable focus assist. Multiple different colors.



False color

Check exposure of your image using False color tool.



1:1 Pixel Mapping

1:1 pixel mapping of sources wich resolution is different than the native resolution of the panel.



PaP - Picture and Picture

Visualize Picture and Picture of your SDI sources with all scopes and resizing capability



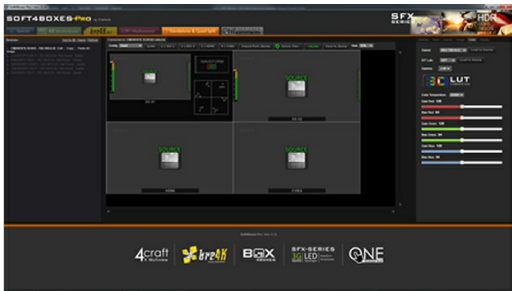
Border & Text color selection

Selectable Border and Text color. Available colors: black, white, red, green, blue, cyan, magenta, yellow and 7 grey levels.



Encoder & Dual Functionality Direct Keys

Encoder to easy navigate through the OSD menu, and direct keys with dual functionality (fixed/configurable). Activate [Fn] Mode to the keys with your custom configuration and access your favourite adjustments just with a press. Keys LED lights can be turned off if required for dark environments.



Soft4Boxes Pro Control Software

Soft4Boxes Pro is a software to control our SFX Series Monitors (Stand Alone & Quad-Split versions). S4B PRO is an intuitive and user-friendly "drag & drop" control software. * Click here for more information!

SB-SERIES NEW

CM240BSL-3G



24" High Bright HDR Multiformat LCD Monitor

2 x 3G SDI Inputs | SFP | HDMI | Ultra Light | High Bright 900 nits

General Information

Key Features

Specifications

Image gallery

Ordering info

Product Documents

LCD DISPLAY

- 1920 x 1200 pixels LED Backlight display
- Brightness: 900 cd/m²
- Contrast: 1000:1
- 178,178 Wide viewing angles
- 10 bit panel

VIDEO INPUTS

- 2 x 3G/HD/SD-SDI Autosensing with active loop through
- 1 x HDMI
- 1 x SFP Module slot
- 1 x CVBS

3G-SDI

- SMPTE 424M-2006 level A and Level B Dual Stream (B-DS)
- Format: 1920x1080p (60, 59.94, 50)
- Cable lenght: 85m Belden 1694A
- BNC Connector

HD-SDI

- SMPTE 274M and SMPTE 296M
- Formats: 1080p (30, 29.97, 25, 24, 23.98, 30PsF, 29.97PsF, 25PsF, 24PsF, 23.98PsF) 1080i (60, 59.94, 50) 720p (60, 59.94, 50)
- Cable lenght: 100m Belden 1694A
- BNC Connector

SD-SDI

- SMPTE 125M/259M
- Formats: 480i (59.94) 576i (50)
- Cable lenght: 250m Belden 1694A
- BNC Connector

GPIO CONNECTOR

- GND Contact closure

DIMENSIONS

- CM240BSL-3G (24" Monitor):
- Dimensions TBD
- Weight TBD KG

POWER REQUIREMENTS

- 24" Monitor 24V DC (XLR Connector). Power consumption: TBD

SB-SERIES NEW

CM240BSL-3G



24" High Bright HDR Multiformat LCD Monitor

2 x 3G SDI Inputs | SFP | HDMI | Ultra Light | High Bright 900 nits

[General Information](#)[Key Features](#)[Specifications](#)[Image gallery](#)[Ordering info](#)[Product Documents](#)

PROFESIONAL BROADCAST LCD MONITORS

- CM240BSL-3G (24" LED Backlight LCD Monitor)