



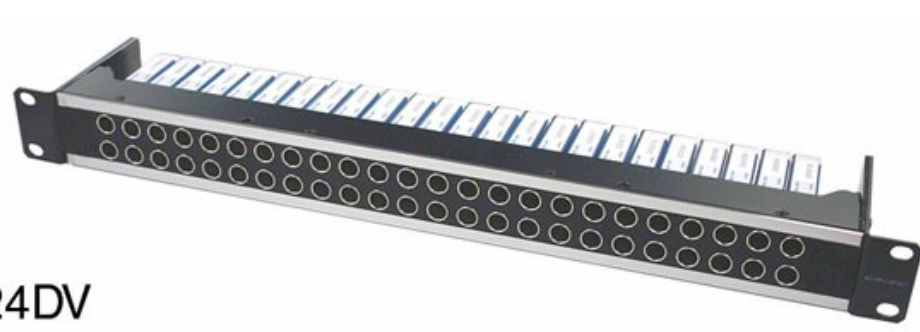
CANARE 20DV VIDEO JACKFIELD With DVJB-W modules

[Datasheet Print/PDF](#) [Ask a question](#)

Stock code
48-370

Brand
Canare

Model number
20DV



24DV

Image may be provided for illustrative purposes only, please refer to the product description.

Resources

[Canare Weco Panels & Modules Specifications](#)

CANARE WECO 3Gb/s 1080p HDTV VIDEO JACKFIELDS

Canare video jackfields are "Western Electric" (also known as WECO) style, widely used worldwide, which use enclosed jack-pair modules with internal micro-switches. They pass uncompressed, 1080p HDTV video up to 3Gb/s (SMPTE424M).

To minimise dust and dirt ingress, the jack pairs are housed in rugged diecast aluminium clam-shell housings, and incorporate hermetically sealed, double reverse-action micro-switches mounted on a screened PCB and rated 30,000 operations. Two precision 75 ohm metal-film resistors offer near perfect signal-path termination. Jack modules are secured by front-panel screws, permitting simple module exchange. Modules have a manufacturer's lifetime guarantee.

Two jack modules are available. DVJB-W is "normal through", which provides a normalised route between top and bottom jacks. On inserting a patchcord plug into either top or bottom jack, the disconnected circuit is automatically terminated into a 75 ohm load. DVJB-S is "straight through", which is effectively two single jacks in one housing, each terminated with a 75 ohm load until a jack plug is inserted. This module is useful for bringing up auxiliary equipment on a central jackfield location. From the front, the modules can be distinguished apart as the DVJB-S type have a slightly serrated jack ring. From the rear, DVJB-W are coded blue, DVJB-S are green.

Jackfields are available in 1U (high density format) in 2 x 20, 2 x 24 and 2 x 26 configurations, together with 2U (standard format) in 2 x 24 and 2 x 26. 2U types feature extra-large designation strip. Jackfields are supplied as standard either with DVJB-W or with DVJB-S modules, however component parts (front panels, jack modules) are available separately to enable users to make up mixed configuration panels. Jackfields do not have lacing bars.

Suitable 75 ohm flexible patchcords VPC-WC are available in three lengths, using black cable as standard, and with black strain-relief sleeves on the connectors. Other lengths and colours are available to special order, subject to a minimum quantity of 10 pieces of each type.

Patchcord plug to BNC socket adapters BCJ-VWP are also available, to enable cables terminated with BNC plugs to be directly patched into the jackfield.

Technical Specification:

SMPTE 292M & 424M Standards

SMPTE 292M is a standard published by SMPTE which allows for bit-rates of 1.485 Gb/s, and 1.485/1.001 Gb/s. These bit-rates are sufficient for to transport uncompressed High Definition video. This standard is usually referred to as HD-SDI and is one of a number of standards that define a Serial Digital Interface based on a coaxial cable, intended to be used for the transport of uncompressed digital video and audio in a television studio environment. SMPTE 424M develops SMPTE292M allowing for bit-rates of 2.970 Gb/s and 2.970/1.001 Gb/s over a coaxial cable or connector panel. These bit-rates are sufficient for uncompressed 1080p video at 50 or 60 frames per second often referred to as 3G HDTV.

The stipulated interface condition (cable & connector) are:
SMPTE 292M - insertion loss 20dB or less at 750MHz - return loss 15dB or less at 1.5GHz.
SMPTE 424M - insertion loss 20dB or less at 1.5GHz - return loss 15dB or less at 1.5GHz and 10dB or less at 3.0GHz.

Note that although the MUSA and WECO systems are visually similar, they are not compatible with each other.

Description	Price £ ex. VAT	Add to basket Delivery
Stock code: 48-370 Please login for stock availability and lead times.	1+ £679.00 10+ £662.00	1
Stock code: 48-371 Please login for stock availability and lead times.	1+ £770.00 10+ £751.00	1
Stock code: 48-372 Please login for stock availability and lead times.	1+ £816.00 10+ £796.00	1
Stock code: 48-373 Please login for stock availability and lead times.	1+ £826.00 10+ £805.00	1
Stock code: 48-374 Please login for stock availability and lead times.	1+ £872.00 10+ £850.00	1
Stock code: 48-3040 Please login for stock availability and lead times.	1+ £677.00 10+ £660.00	1
Stock code: 48-3041 Please login for stock availability and lead times.	1+ £766.00 10+ £747.00	1
Stock code: 48-3042 Please login for stock availability and lead times.	1+ £811.00 10+ £791.00	1
Stock code: 48-3043 Please login for stock availability and lead times.	1+ £820.00 10+ £799.00	1
Stock code: 48-3044 Please login for stock availability and lead times.	1+ £864.00 10+ £842.00	1
Stock code: 48-397 Please login for stock availability and lead times.	1+ £27.06 10+ £26.38	1
Stock code: 48-398 Please login for stock availability and lead times.	1+ £27.06 10+ £26.38	1
Stock code: 48-375 Please login for stock availability and lead times.	1+ £175.20 10+ £170.90	1
Stock code: 48-376 Please login for stock availability and lead times.	1+ £168.70 10+ £164.50	1
Stock code: 48-377 Please login for stock availability and lead times.	1+ £164.30 10+ £160.20	1
Stock code: 48-378 Please login for stock availability and lead times.	£220.20 Clearance £50.00	1
Stock code: 48-379 Please login for stock availability and lead times.	1+ £216.90 10+ £211.50	1
Stock code: 48-391 Please login for stock availability and lead times.	1+ £21.91 10+ £21.36	1
Stock code: 48-392 Please login for stock availability and lead times.	1+ £21.91 10+ £21.36	1
Stock code: 48-393 Please login for stock availability and lead times.	1+ £23.00 10+ £22.43	1
Stock code: 48-396 Please login for stock availability and lead times.	1+ £8.76 10+ £8.54	1

Order [VAT / Delivery](#)

£679.00
each (ex. VAT)
10+ £662.00

1

Ordered on demand, cancellations may incur charges, available in 2-3 weeks.
Need it sooner? [Call us](#)

RoHS Status

Also bought [Find similar](#)

Customers also bought...

£21.91

£21.91

£8.76

£2.42

£56.93

£30.63

£0.60

£0.25

Cookie consent

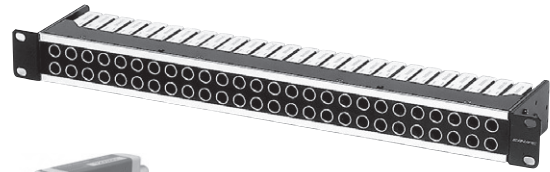
This site uses cookies to store information on your computer. By continuing we assume your permission to store cookies, as detailed in our [privacy policy](#).

75Ω Video Patchbays

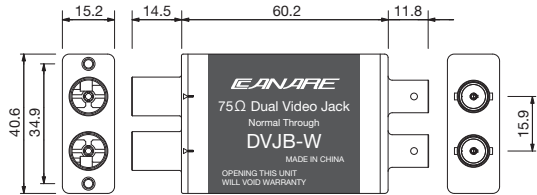
3G-ready HD-SDI video patchbays featuring Canare's uniquely-developed rotary switches.

Model	Panel Size	Loaded Video Jacks
20DV	1RU	20 x DVJB-W
20DVS	1RU	20 x DVJB-S
* 20DV-2U	2RU	20 x DVJB-W
* 20DVS-2U	2RU	20 x DVJB-S
24DV	1RU	24 x DVJB-W
* 24DVS	1RU	24 x DVJB-S
24DV-2U	2RU	24 x DVJB-W
* 24DVS-2U	2RU	24 x DVJB-S
26DV	1RU	26 x DVJB-W
26DVS	1RU	26 x DVJB-S
26DV-2U	2RU	26 x DVJB-W
* 26DVS-2U	2RU	26 x DVJB-S

*Production by order
*Colors other than black are available on custom-made basis. (See page 57)



26DV

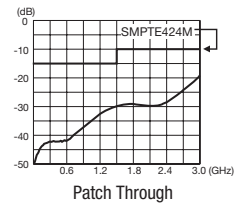
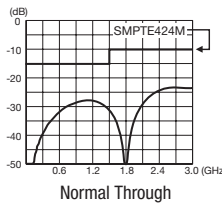


75Ω Dual Video Jacks

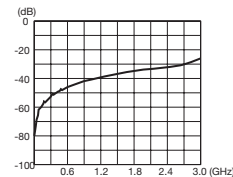
Model	Description
DVJB-W	Normal Through
DVJB-S	Straight Through
VJ-DC	Dust Cap for Video Jack (color: black 40pcs)

Key Features and Benefits

- Rotary switch has been improved for superior isolation.
- Also usable as digital audio patchbay.
- Can be recessed 25mm.
- Wide designation strip (2RU type).
- Lightweight aluminum alloy video jacks.



Return loss for DVJB-W



Isolation

Return Loss & Isolation

Model	Return Loss			Isolation
	BNC-BNC: Normal Through	BNC-VIDEO: Patch Through	BNC-Self Termination	
DVJB-W		26dB or greater (~750MHz)		35dB or greater (~1.5GHz) 20dB or greater (~3.0GHz)
		20dB or greater (~2.4GHz)		
		10dB or greater (~3.0GHz)		
DVJB-S	N/A	26dB or greater (~750MHz)	26dB or greater (~750MHz)	35dB or greater (~1.5GHz) 20dB or greater (~3.0GHz)
		20dB or greater (~2.4GHz)	20dB or greater (~1.5GHz)	
		10dB or greater (~3.0GHz)	10dB or greater (~3.0GHz)	

Technical Note

Rotary Switch Technology and Signal Routing Chart

At the heart of the video jack is an independently-developed rotary switch which has been specially designed for use with high frequency signals. It features dual-contact construction for improved contact stability.



W Series (Normal Through)			
Video Port: No Patch		BNC Port: Signal thru as Arrowed	Signal routes between top and bottom BNC without the use of Video plugs.
Video Port: Patch Upper		BNC Port: Lower Terminated	Inserting a Video Patch Cord into front "upper" port automatically terminates signal path into the lower 75Ω load.
Video Port: Patch Lower		BNC Port: Upper Terminated	Inserting a Video Patch Cord into front "lower" port automatically terminates signal path into the upper 75Ω load.
Video Port: Patch Both		BNC Port: Signal thru as Arrowed	Inserting Video Patch Cords into both front ports inputs and/or outputs signal.

S Series (Straight Through)			
Video Port: No Patch		BNC Port: Both Signal Terminated	Two independent single jacks in a dual housing.
Video Port: Patch Upper		BNC Port: Lower Terminated	Inserting a Video Patch Cord into front "upper" port automatically terminates signal path into the lower 75Ω load.
Video Port: Patch Lower		BNC Port: Upper Terminated	Inserting a Video Patch Cord into front "lower" port automatically terminates signal path into the upper 75Ω load.
Video Port: Patch Both		BNC Port: Signal thru as Arrowed	Inserting Video Patch Cords into both front ports inputs and/or outputs signal.