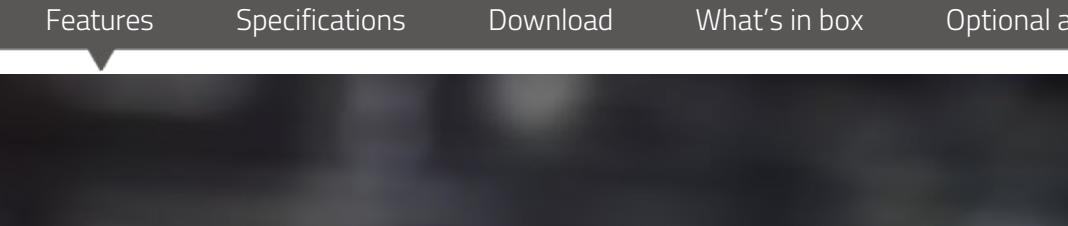


CL-60D | 60W 1:1 Bi-color SMD LED panel light



- > 900pcs ultra bright long-life LEDs
- > SMD Surface mounted LED technology
- > 65° wide beam angle, equally spread
- > 2700K-6500K continuously adjustable
- > 60W power, 2000Lux @ 1meter
- > 0-100% flick-free dimming
- > Super high CRI 98, TLCI 99
- > DMX512 controlled color and dimmer
- > LCD display color and dimmer value
- > Power by V/Gold mount battery or AC adaptor
- > 4-leaf metal barn doors and Yoke bracket
- > Optional 40° honeycomb



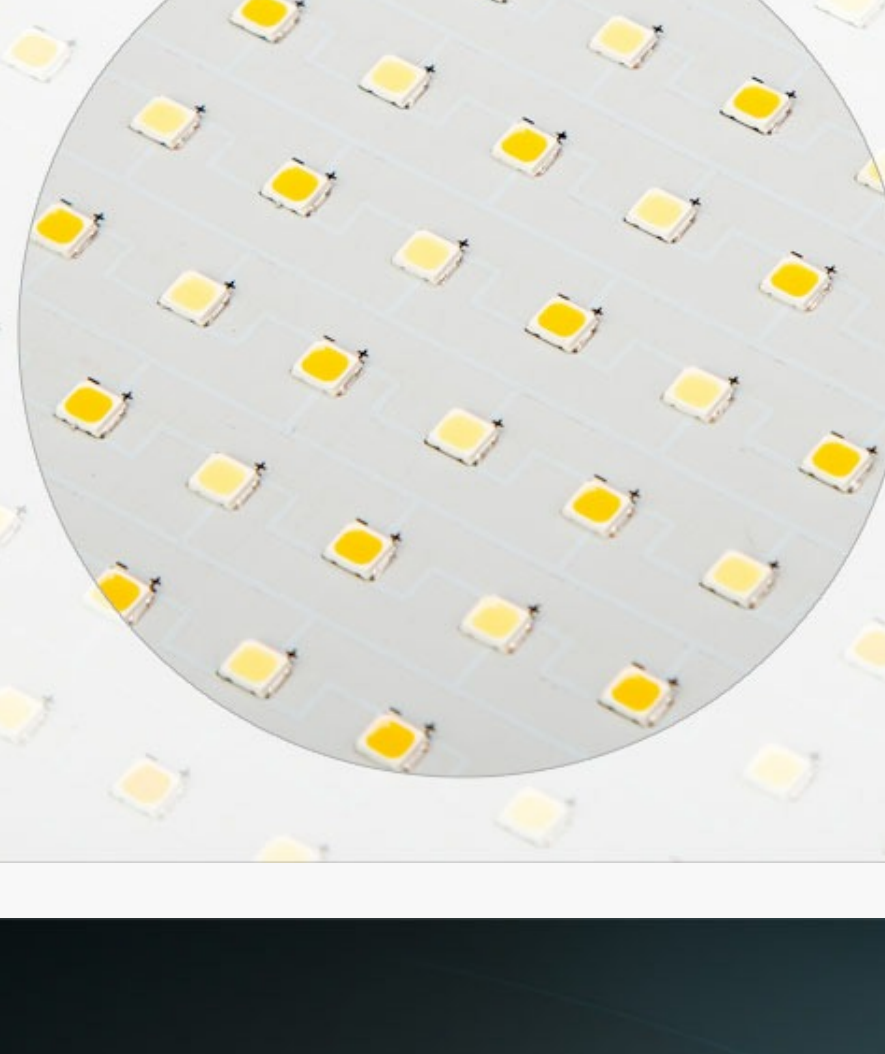
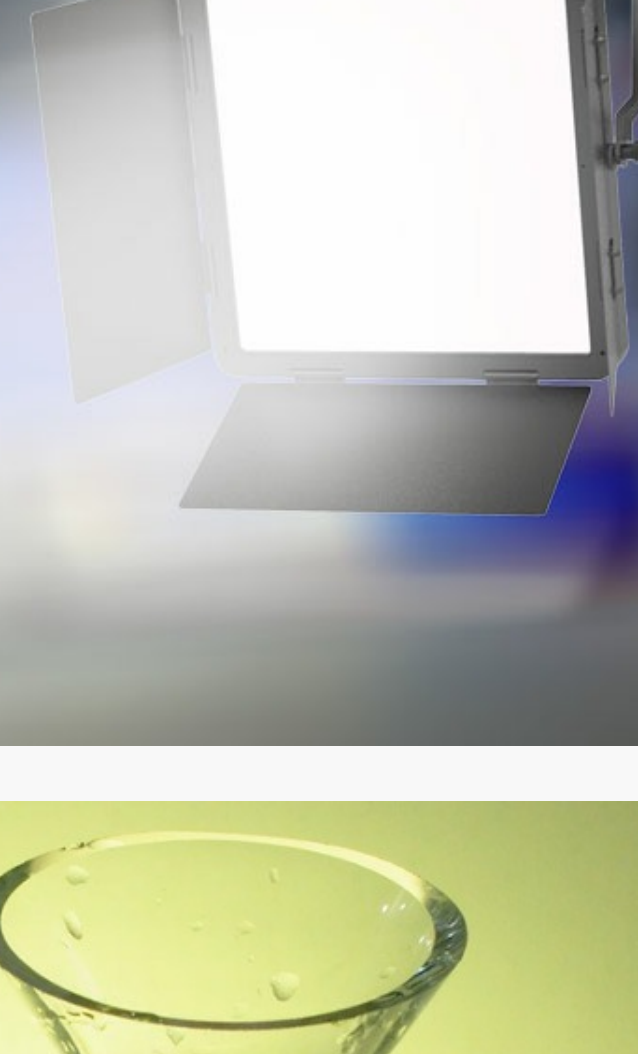
Features Specifications Download What's in box Optional accessory Related



SMD LED Studio Light

Brighter, softer, wider beam angle

CL-60D is a 60W 1:1 Bi-color SMD LED panel light, with DMX control, high CRI/TLCI and accurate color performance, for broadcast studio, mobile studio, live streaming studio or interview kit applications.



900pcs Surface Mounted LEDs

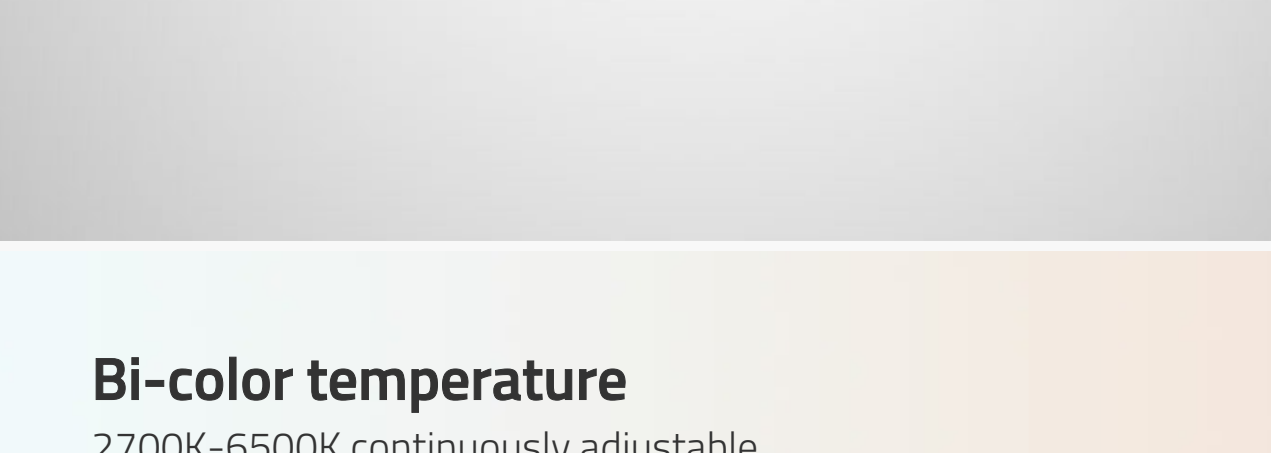
CL-60D adopts 900pcs SMD LEDs, featured:
 (1) higher uniformity of illuminance;
 (2) wider beam angle;
 (3) higher color rendering index;
 (4) Softer and Brighter;
 (5) longer life time,
 which is an ideal light source for Broadcast studios, green keyer, interview kit, live streaming etc.

2000 Lux @ 1 meter

CL-60D outputs 60W power, feeds 2000Lux luminance at 1 meter distance (center), supports 0 to 100% PWM digital dimming, smoothly and non-flickering.



Beam angle testing at 1 meter



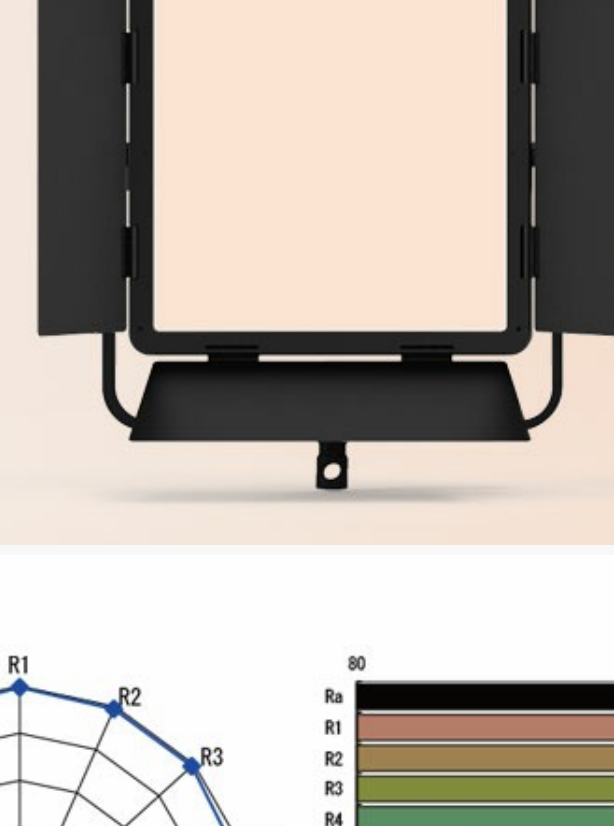
Wider Beam Angle

The SMD LEDs have wider beam angle comparing to the traditional DIP LED bulbs. It will generate an equally spread area light from center to edge, instead of a glaring light spot that suddenly declined from center to edge. The wider angle equally spread light produces a nature light environment in studio.

Bi-color temperature

2700K-6500K continuously adjustable

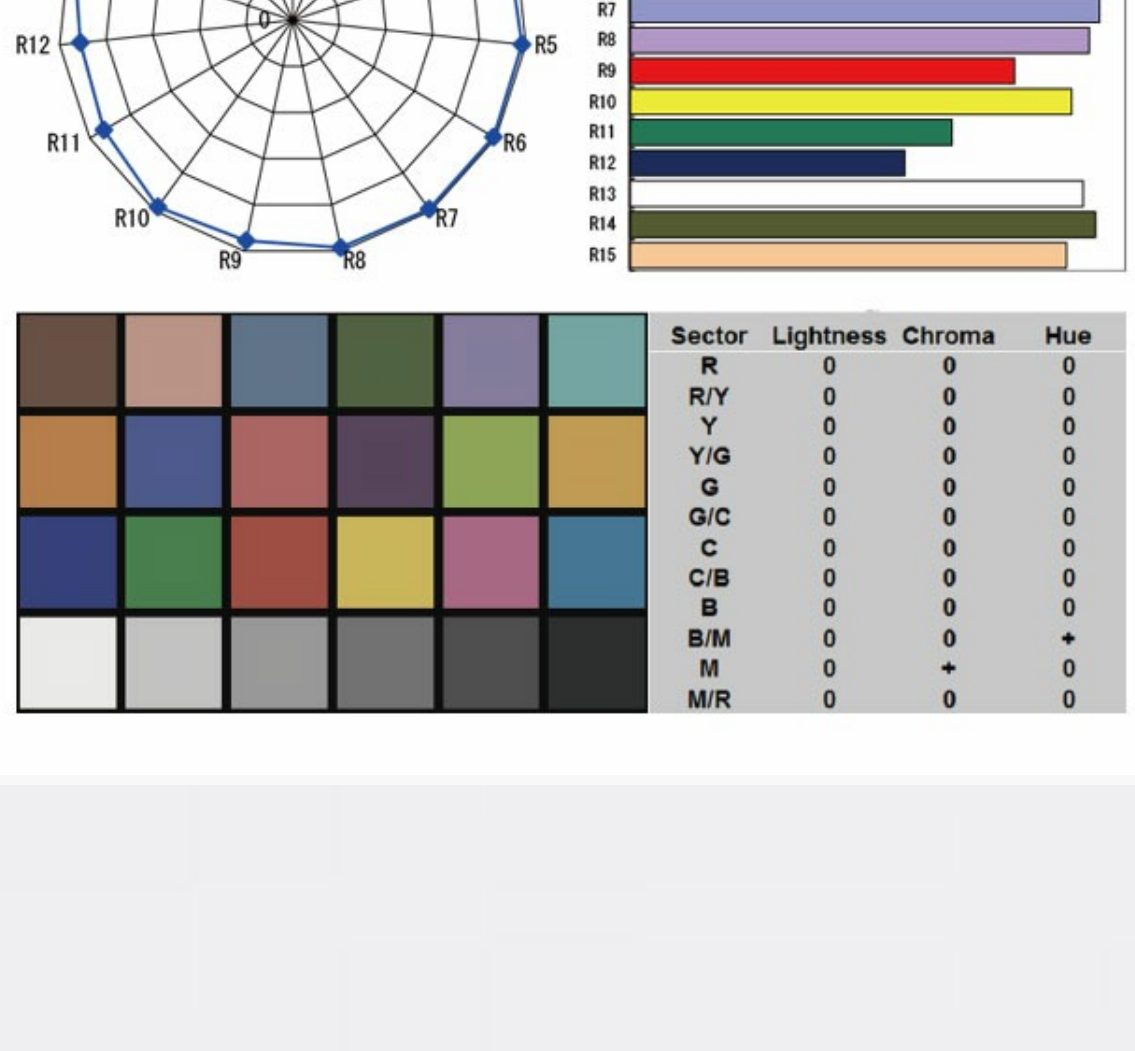
CL-60D alternated with 2700K and 6500K LEDs, and can be continuously adjusted between 2700K and 6500K, 50K step.



Accurate Color Render

CRI 98; TLCI 99

CRI (Color Rendering Index) is a measure of the ability of a light source to reveal the colors of various objects faithfully in comparison with a natural light source. And TLCI (Television Lighting Consistency Index) is special for the color reveal ability by camera sensor. Max value 100. The normal LED light has 80-85 CRI or TLCI, while CL-60D offers the super high CRI at 98 and TLCI at 99, and will not lose the object original colors.



DMX512 Control

5pin XLR in and out

DMX address: N= Dimmer; N+1= Color temp Provides a 5V USB power output socket. You can use SWIT LA-WR8 Pocket Wireless DMX controller and power the wireless DMX adaptor by the on board USB socket. Press and hold dimmer knob for 2 seconds to enter DMX address setting from 001 to 512.

LCD screen display

Dimmer / color temp / DMX address

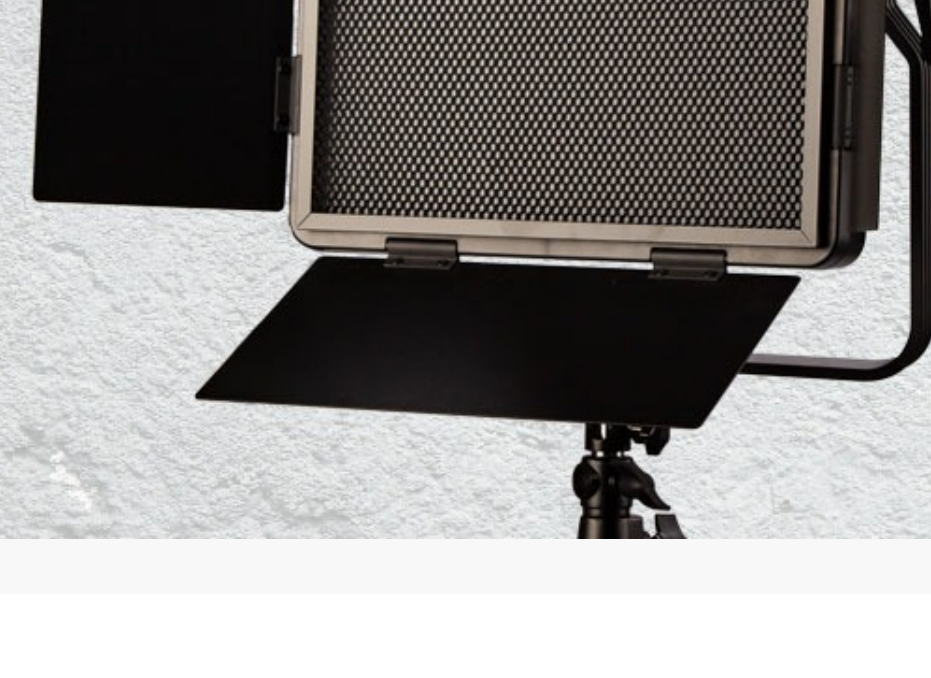
The rear LCD screen can display the current dimmer percentage, color temperature value, DMX channel and CH channel, and remaining battery indications.



DC 11-17V Power Supply

By V-mount battery or AC-DC adaptor

CL-60D supports 11-17V voltage input, with 4-pin XLR DC socket, and equipped with V-mount or Gold mount plate to power by batteries. (The default bat- tery plate is V-mount.)



Optional Honeycomb

CL-60D provides a 40° metal honeycomb plate for optional purchase. The honeycomb can be used together with barndoors. Honeycomb Part number: LA-G60















