

Hybrid Fiber-optic Camera Connector Panels

Pre-terminated HFO camera connector panel with built-in splice enclosure box provides easy and quick installation between HD camera system and terminal panel or rack. By combining the unit and frame, HFO camera connector panel enables a variety of layouts depending on the system design.

■ COPS-F Series (SMPTe)

Model	Panel Size	Panel Connectors* (Assembly)
★ COPS-FF3	Wall Mount Type	2x FCFRA (FCS003A-FR)
★ COPS-FM3	3RU Height, W:197.6mm	2x FCMRA (FCS003A-MR)
★ COPS-FF2	Wall Mount Type	2x FCFRA (FCS003A-FR)
★ COPS-FM2	2RU Height, W:197.6mm	2x FCMRA (FCS003A-MR)
★ COPS3-FF3	Rack Mount Type	6x FCFRA (FCS003A-FR)
★ COPS3-FM3	3RU	6x FCMRA (FCS003A-MR)
★ COPS3-FF2	Rack Mount Type	6x FCFRA (FCS003A-FR)
★ COPS3-FM2	2RU	6x FCMRA (FCS003A-MR)

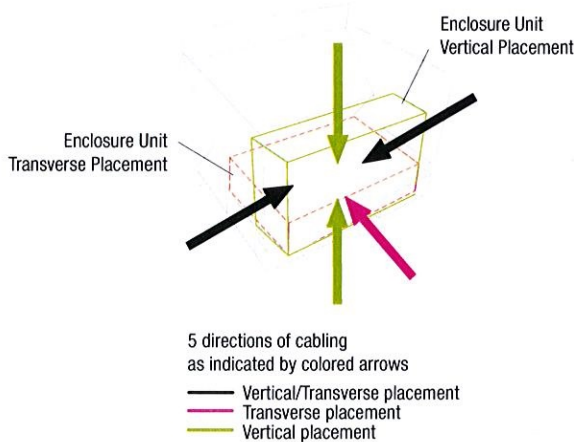
* Each panel connector is pre-terminated, length at 0.3m.

* TA/JIMI compatible type (OC series) is also available. Please contact Canare for more information.

★ Production by order

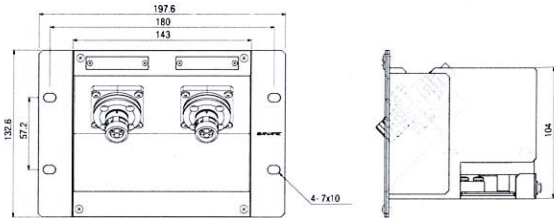
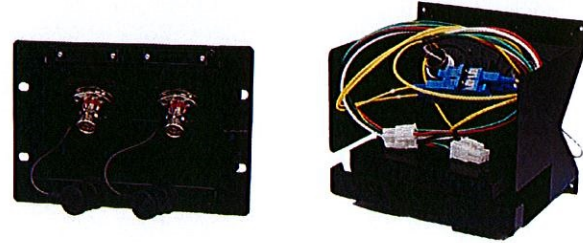
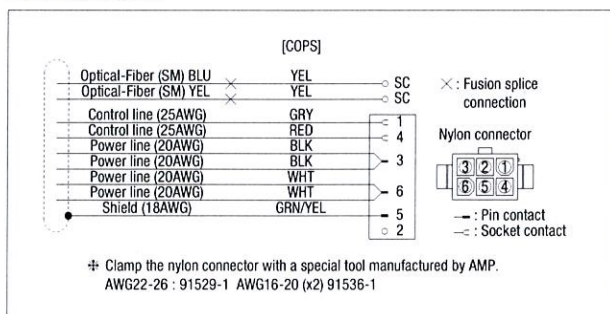
Key Features and Benefits

- Exclusive "5-directional Wiring"
- Convenient to build I/O interface between HD facilities and HD OB vans
- Variety of choice of 2RU/3RU and wall/rack mount
- Pre-terminated HFO connectors reduce installation time dramatically.
- Cost effective

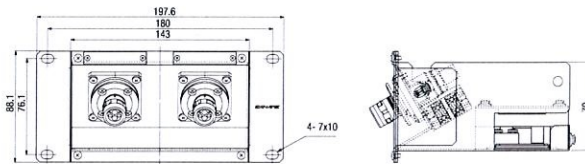


5-directional Wiring
JP Patent No.4388540

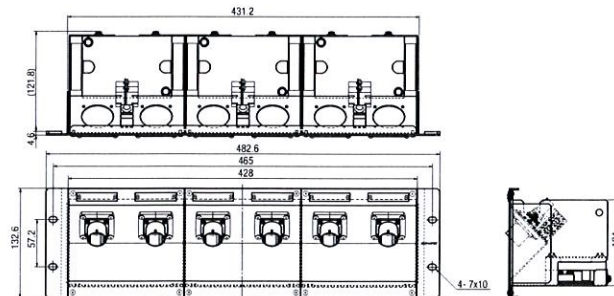
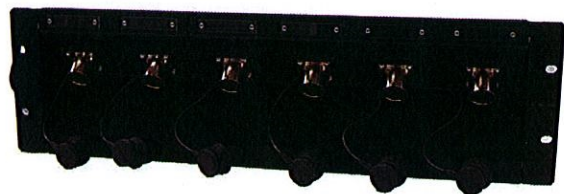
■ Wiring Diagram



COPS-FF3



COPS-FF2



COPS3-FM3

Accessories

Fiber-optic cable w/SC connector (2m), grounding cable, nylon connector, Pin connector, socket contact, tie-band, fusion reinforcement sleeve, fusion rubber holder, color-coded tube, mounting screw, laser warning label.
[NOTE] A separately available dedicated tool is required to assemble nylon connectors.