



## ATEM Studio and Camera Converters

### Get your camera close to the action using low cost optical fiber!

Now you can position your cameras a long distance away from your switcher and get closer to the action with ATEM Camera and Studio Converters.

ATEM Camera Converter is a super tough optical fiber converter with talkback, tally, microphone inputs and a built in long life battery. Using low

cost optical fiber you can connect to your cameras up to 28 miles away and even at those great distances you still get full bi-directional video, audio, talkback and tally signals!



ATEM Camera Converter

ATEM Studio Converter



## Live Camera Connections

### The perfect solution for live events!

ATEM Converters are the perfect solution for live music and sporting events where you need to place cameras in remote locations such as on race tracks or near to a stage, where there is a huge distance between the live action and your switcher! Connect up to 4 ATEM Camera Converters to each ATEM Studio Converter and get multiple camera talkback, so all camera operators can communicate with the switcher operator using talkback that is embedded into channels 15 and 16 of the optical fiber SDI connection.

## The ATEM Converters Designed for live production



New ATEM Studio Converter

ATEM Camera Converter

There are two ATEM converters for use at opposite ends of a live camera connection! ATEM Camera Converter converts your camera's SDI or HDMI output to optical fiber, with embedded external audio and talkback from the camera position. The machined aluminum design is lightweight, strong and includes an internal long life battery for increased portability.

ATEM Studio Converter's rack mount design has 4 bi-directional optical fiber connections so you can connect multiple camera converters and convert the optical fiber input to SDI and de-embed audio using XLR connections.

## Optical Fiber Link Work over lengths of up to 28 miles!



ATEM converters connect using industry standard single mode optical fiber cable with standard LC connectors. Optical fiber lets you connect way beyond the distance of traditional copper cables. It's widely available, easy to use and affordable because it's the same optical fiber cable used in

computer networking. ATEM Camera Converter and ATEM Studio Converter use the standard SMPTE specification for optical fiber connections using standard single mode optical fiber running at 1310nm, which allows you to connect at distances up to 28 miles!

## Talkback

During busy live production it's vital to be able to talk to your camera operators. ATEM Camera and Studio Converters take advantage of the 16 channel SDI audio standard and embed the talkback into rarely used channels 15 and 16. ATEM Camera Converter uses standard PC or iPhone type headsets while the ATEM Studio Converter uses more robust aviation headsets that are available in hundreds of different styles! ATEM Studio Converter also features a built in microphone input and speaker so you don't need to use a headset.



Embed talkback into unused SDI channels



Tally is simple to use and makes it easy to see when you are on air!

## Premium Quality Design

### Machined from a solid block of aluminum



7.9 in  
1.7 lb

ATEM Camera Converter is machined from a solid block of aluminum to withstand daily use in live production environments. The integrated belt clip lets you operate cameras easily while connected to headsets. ATEM Studio Converter features a stylish machined aluminum front panel for a super tough design that also includes microphone and headset connections, backlit press to talk buttons, plus a built in speaker and volume control for talkback. All video and audio connections are on the rear panel and the built in power supply supports 110V to 240V.

## Highest Quality Connections

### Use pro or consumer cameras!

ATEM Camera Converter features high quality SDI and HDMI inputs for connecting professional SDI and consumer HDMI cameras. It includes 1/4" stereo jack mic/line inputs so external commentary and effects audio can be sent from the camera position. ATEM Studio Converter has 4 bi-directional fiber converters that convert each camera feed from optical fiber to SDI and output balanced analog audio on XLR connectors. Also included is loop program SDI in, plus AES/EBU microphone and headphone loops that let you link multiple ATEM Studio Converters.



## Smart Software

### Keep up to date!

Blackmagic Design's Converter Utility Software lets you quickly set up converter functions, including camera numbers and audio levels. The utility software also lets you update your ATEM Converters with the latest firmware via a USB connection on each converter. This means you can download firmware updates to add new features or support for new video formats. Converter Utility Software is available for both Mac OS X and Windows.

Next ▶

## ATEM

**ATEM Studio Converter**  
4 x optical fiber converters in 1 RU design, supports talkback and tally.

\$1,995

Buy Now

**ATEM Camera Converter**  
Battery powered optical fiber converter with talkback, tally and mic inputs.

\$595

Buy Now

Follow us



Change your location

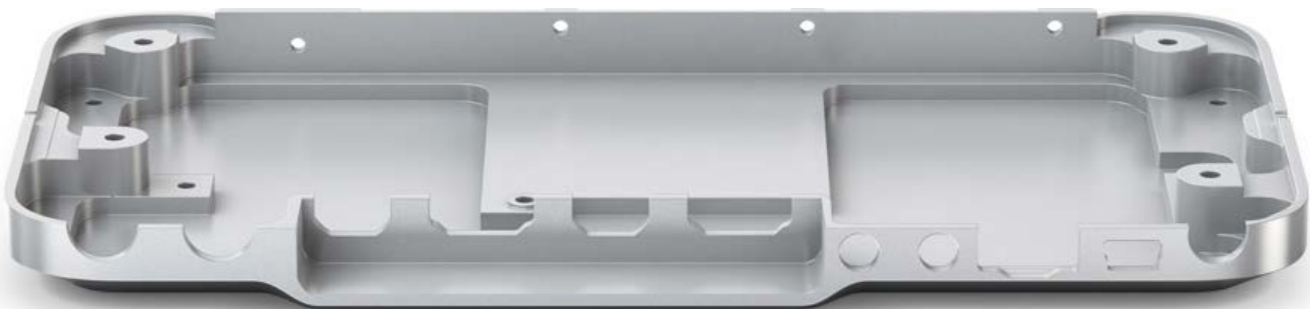
United States





## Integrated Design Video, talkback and tally!

ATEM Camera Converter and ATEM Studio Converter are designed to be used at either end of a live camera connection. Now you can easily connect cameras to production switchers, even when they are huge distances apart. Each converter has been designed to make it easier than ever to connect to cameras with video, audio, talkback and tally. The battery powered ATEM Camera Converter is located at the camera and is designed to be used in remote locations. The ATEM Studio Converter has a rack mount design that contains all connections built into the unit.



ATEM Camera Converter is machined from solid aluminum for an incredibly strong design.

## Heavy Duty Machined Metal Design Light and Durable

ATEM Camera Converter’s machined aluminum design is lightweight and incredibly strong. The precision cut chassis houses advanced electronics and video connectors are recessed for added protection. Rubber feet on the bottom of the unit are included for grip when you use the ATEM Camera Converter on a desk, plus a machined belt clip can also be attached. The

ATEM Studio Converter’s rack mount design has an elegant aluminum front panel, featuring push to talk buttons for talkback communication, plus microphone and headphone connections. There is a built in speaker and volume control so you can also monitor talkback channels in a control room environment.

## Designed for Live Production Strong with long life battery built in

ATEM Camera Converter and ATEM Studio Converter connect together using a single mode optical fiber connection that can stretch up to 28 miles in distance. The ATEM Camera Converter is designed for portable use and features an internal rechargeable battery, along with all the connections required to send video, audio and talkback over the optical fiber link. The ATEM Studio Converter is designed to fit into your equipment rack and has 4 separate optical fiber connections. The optical fiber signal is converted back to SDI video and analog audio outputs for connecting each camera to your switcher. Program feeds with talkback and tally are sent to each connected camera.



Built in aluminum clip allows ATEM Camera Converter to be mounted on your belt!

## Ergonomic Controls Control all settings and talkback from the front panel

ATEM Camera Converter’s controls are conveniently located in a rubberized button strip on one side of the unit. LED indicators show the remaining battery power and confirm that optical fiber and video signals are present. The unit’s power button needs to be pressed and held for 2 seconds to ensure the unit is not accidentally turned off during use. Illuminated push to talk buttons on the front of the ATEM Studio Converter give easy operation of talkback to one or more cameras. They can be locked so the talkback channel is left open when required.

Easy to use front panel controls are backlit for easy visibility in low light.



## Long Life Battery Run without power for 3 hours

As the ATEM Camera Converter is designed to be used in remote camera positions, it includes a built in rechargeable

battery that provides more than 3 hours battery life. With a wide 12-31V power range you can use an external battery to power the unit if longer operation is required where no mains power source is available.



Built in battery indicator shows you the charge on your battery.

Highest Quality Connections  
Recessed design for SDI and HDMI connectors  
keeps them safe from damage



Connect to analog audio mixers using the de embedded audio outputs.

Next ▶

ATEM

ATEM Studio Converter  
4 x optical fiber converters in 1 RU design, supports talkback and tally.

\$1,995

Buy Now

ATEM Camera Converter  
Battery powered optical fiber converter with talkback, tally and mic inputs.

\$595

Buy Now

Follow us

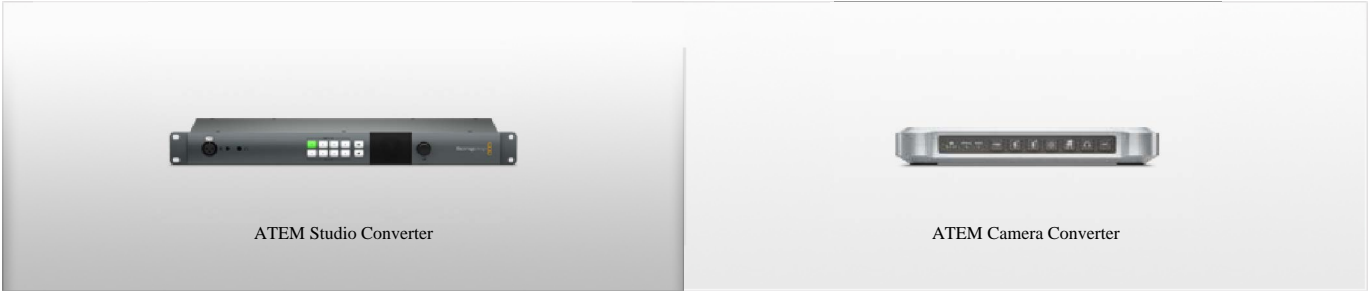


Change your location

United States

All items on this website are copyright Blackmagic Design Pty. Ltd. 2014, all rights reserved. All trademarks are property of their respective owners.  
MSRP excludes sales taxes/duties and shipping costs.



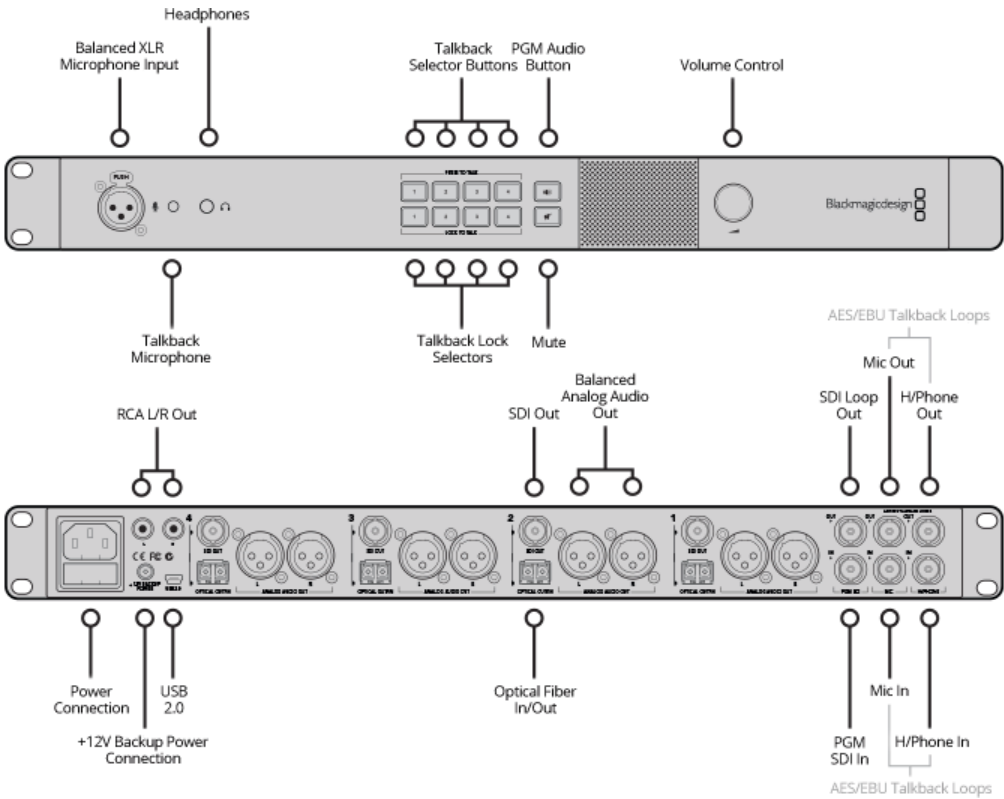


## ATEM Studio Converter

### Technical Specifications

Description	ATEM Studio Converter is the ideal partner for the ATEM Camera Converter. Connect up to four Camera Converters via optical fiber up to 28 miles away with bi-directional video plus tally and talkback! Connect your ATEM switcher program output to the ATEM Studio Converter and this is distributed to the four Camera Converters. Multiple Studio converters can be cascaded together when more than 4 cameras are needed. Studio converter can also be used as four independent SDI or Fiber to HDMI converters and four independent simultaneous SDI to Optical and Optical to SDI converters!	Price \$1,995
-------------	--	------------------

Connections	<div><b>SDI Video Input</b> 1 x 10 bit SD/HD switchable program input from switcher, including tally information.</div> <div><b>SDI Video Output</b> 4 x 10 bit SD/HD switchable camera outputs. 1 x 10 bit SD/HD switchable program loop thru output connects to another ATEM Studio Switcher.</div> <div><b>Talkback Audio</b> Aviation Headsets with 0.25" TRS headset connector and 0.206" TRS microphone connector. Front mounted balanced XLR microphone connector.</div> <div><b>Analog Audio</b> 1 x stereo RCA monitoring output.</div>	<div><b>AES/EBU Audio Input</b> 1 x combined headphone input. 1 x combined microphone input. Combined inputs for connecting to other ATEM Studio Converters.</div> <div><b>AES/EBU Audio Output</b> 1 x combined headphone output. 1 x combined microphone output. Combined outputs for connecting to other ATEM Studio Converters.</div> <div><b>Balanced XLR Audio Output</b> 4 x camera stereo analog audio outputs.</div> <div><b>Optical Fiber Video Input</b> 4 x single mode SD/HD switchable camera inputs with LC connector.</div>	<div><b>Optical Fiber Video Output</b> 4 x single mode SD/HD switchable camera outputs with LC connector.</div> <div><b>Optical Fiber Audio Input</b> 4 x single mode camera audio inputs with LC connector. Channels 1 &amp; 2 are camera audio. Channels 15 &amp; 16 are intercom audio.</div> <div><b>Optical Fiber Audio Output</b> 4 x single mode camera audio outputs with LC connector. Channels 1 &amp; 2 are camera audio. Channels 15 &amp; 16 are intercom audio.</div> <div><b>Computer Interface</b> 1 x mini-B type USB 2.0 connector for firmware updates.</div>
-------------	--	---	--



Standards	<div><b>SD Format Support</b> 525/29.97 NTSC, 525/23.98 NTSC, 625/25 PAL</div> <div><b>HD Format Support</b> 720p50, 720p59.94, 720p60, 1080i50, 1080i59.94, 1080i60, 1080PsF23.98, 1080PsF24, 1080PsF25, 1080PsF29.97, 1080PsF30, 1080p23.98, 1080p24, 1080p25, 1080p29.97, 1080p30, 1080p50, 1080p59.94, 1080p60</div> <div><b>2K Format Support</b> 2048x1080p23.98, 2048x1080p24, 2048x1080p25, 2048x1080PsF23.98, 2048x1080PsF24, 2048x1080PsF25</div>	<div><b>4K Format Support</b> 3840x2160p23.98, 3840x2160p24, 3840x2160p25, 3840x2160p29.97, 3840x2160p30, 4096x2160p24</div> <div><b>SDI Compliance</b> SMPTE 259M, SMPTE 292M</div> <div><b>Audio Sampling</b> Television standard sample rate of 48Khz, 24 bit A/D conversion.</div> <div><b>Video Sampling</b> 4:2:2</div>	<div><b>Color Precision</b> 10-bit</div> <div><b>Color Space</b> REC 601, REC 709</div> <div><b>Multiple Rate support</b> SDI switches between SD and HD.</div>
-----------	---	---	---

Software	<b>Software Included</b> Converter Utility for firmware update.
----------	--

Operating Systems	<div><p>Mac OS X 10.8 Mountain Lion, Mac OS X 10.9 Mavericks or later.</p></div> <div><p>Windows 7 or Windows 8.</p></div>
-------------------	--

Power Requirements	<b>Power Supply</b> 110 - 240 V AC input with redundant 12-31V DC input.
--------------------	---

### Physical Specifications




Environmental Specifications	Operating Temperature 0° to 40° C (32° to 104° F)	Storage Temperature -20° to 45° C (-4° to 113° F)	Relative Humidity 0% to 90% non-condensing
What's Included	ATEM Studio Converter Software CD		
Warranty	3 Year Limited Manufacturer's Warranty. Excluding connectors, cables, cooling fans, fiber optic modules, fuses and keyboards which will be free from defects in materials and workmanship for a period of 12 months from the date of purchase.		

Next ▶

## ATEM

ATEM Studio Converter 4 x optical fiber converters in 1 RU design, supports talkback and tally.	\$1,995	Buy Now
ATEM Camera Converter Battery powered optical fiber converter with talkback, tally and mic inputs.	\$595	Buy Now

Follow us  | Change your location 

United States

All items on this website are copyright Blackmagic Design Pty. Ltd. 2014, all rights reserved. All trademarks are property of their respective owners.  
MSRP excludes sales taxes/duties and shipping costs.