

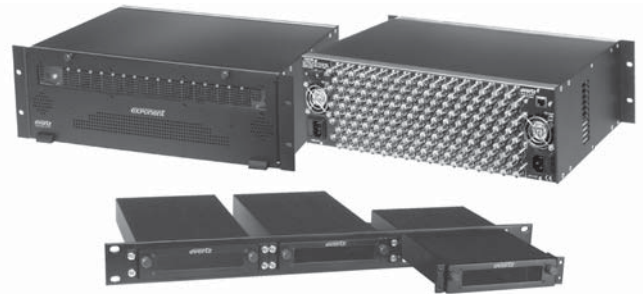
500FR, S501FR

Compact High Density Distribution Frame



The Evertz 500FR Compact Distribution Frame is an ideal solution for today's vast digital video distribution requirements. It handles the high-speed requirements of HDTV as well as Analog and SDTV signals. The frame design allows extraction of modules from the front without compromising performance even at 1.5Gb/s. The 500FR Compact Distribution Frame is a 3RU frame designed to house up to 16 single slot modules.

Note: The image shows 3 of the S501FR standalone Compact High Density Distribution Frames mounted into the S501FR-RP Rackmount panel S501FR

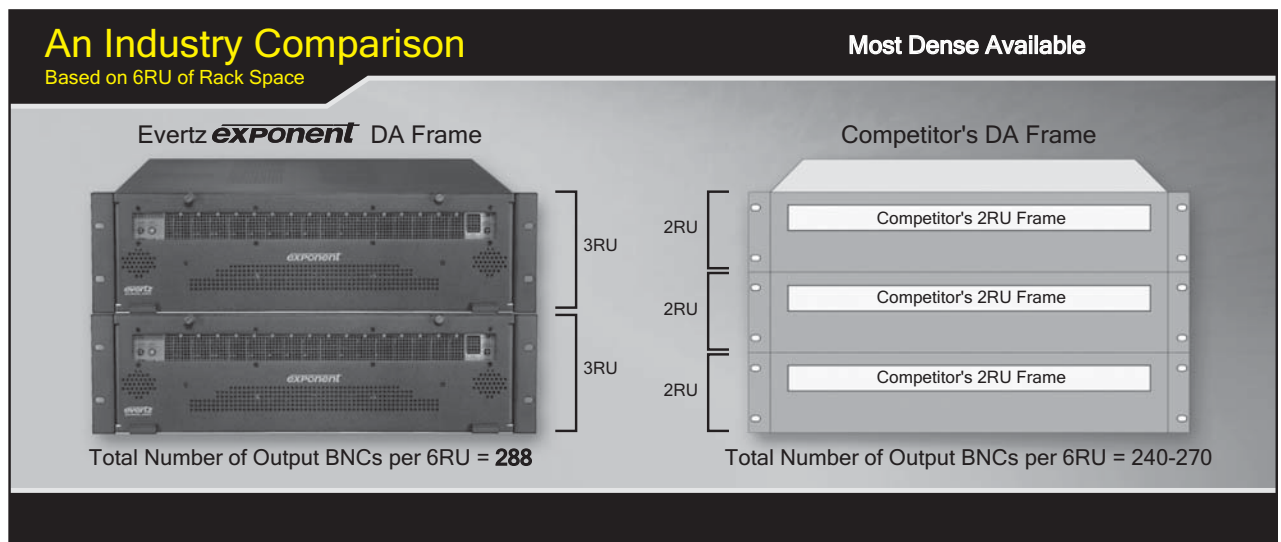


Specifications

Electrical (500FR):		Electrical (S501FR):		Physical (S501FR):	
AC Mains Input:	Auto ranging, 100 to 240V AC, 50/60Hz	Voltage:	12V DC Nominal Auto ranging, 100 to 240V AC power adapter	Dimensions:	4.9"W x 1.2"H x 10.5"D (124mm W x 30mm H x 267mm D)
Max. Operating Current:	2.6 A (@ 120V AC), 1.4 A (@ 240V AC)	Power Consumption:	10W max	Module Capacity:	1 single slot
Max. Power Consumption:	200W	Fuse:	Internal self resetting fuse	Weight:	1lb (.45kg)
Max. Module Load:	160W (10W per slot)	Connector:	2.5mm DC power jack	Certification:	
Power Supply Configuration:	Dual, redundant, separate AC inlets	Physical (500FR):		Safety:	CSA Listed (500FR) Power adapter CSA listed (S501FR) Complies with CE Safety Directive Complies with FCC part 15, Class A EU EMC Directive
Connector:	IEC 60320 - 1 per power supply	Height:	5.25" H x 19" W x 9.5" D (133mmH x 483mmW x 368mmD)	EMC:	
Fuses:	4 amp, 250V time delay 5x20 mm. - 2 per power supply	Module Capacity:	16 slots	Signal Connections:	BNC Per IEC 61169-8 Annex A (10 per slot)
Safety:	CSA Listed Complies with CE Low voltage Directive	Weight:	Approx 17lbs (7.7kg) with 2 power supplies, no slots occupied Approx. 32lbs (14.5kg) with 2 power supplies all slots occupied	Status Indicators:	PSU status LED, Local Error/Failure LED
EMC:	Complies with FCC part 15, class A Complies with EU EMC directive			Tally Output Connector:	4-pin terminal, relay N/O, N/C for status/fault alarm 2A, 125V DC max 0-40°C optimal performance 0-50°C operating
				Temperature:	

Ordering Information

500FR	Compact High Density Distribution Frame	S501FR	Standalone Compact High Density Distribution Frame
Ordering Options		Accessories	
+5PS	Redundant power supply	VSHEG42-120300-7	Spare/additional power supply for S501FR
Accessories		S501FR-RP	Rackmount panel mounts three S501FR enclosures in a 1RU rack space (Includes two blank panels for unfilled slots)
500PS	Additional power supply for 500FR		



Notes:

- exponent** achieves the highest density with 288 BNC outputs (per 6RU)
- exponent** uses less power supplies thus less points of failure (per 6RU)

- exponent** provides a direct connection to an SNMP network. Some competitive pseudo SNMP solutions require intermediate application servers or protocol translators which add latency, single point of failure issues, cost, and complexity.

500FR, S501FR

Compact High Density Distribution Frame



Note: The above image shows 3 of the S501FR standalone Compact High Density Distribution Frames mounted into the S501FR-RP Rackmount panel S501FR

Specifications

Electrical (500FR):	Fuse:	Internal self resetting fuse	Certification:
AC Mains Input: Auto ranging, 100 to 240V AC, 50/60Hz	Connector:	2.5mm DC power jack	Safety:
Max. Operating Current: 2.6 A (@ 120V AC), 1.4 A (@ 240V AC)	Physical (500FR):		CSA Listed (500FR)
Max. Power Consumption: 200W	Height:	5.25" (133mm)	Power adapter CSA listed (S501FR)
Max. Module Load: 160W (10W per slot)	Width:	19" (483mm)	Complies with CE Safety Directive
Power Supply Configuration:	Depth:	9.5" (368mm)	Complies with FCC part 15, Class A
Connector: Dual, redundant, separate AC inlets	Module Capacity:	16 slots	EU EMC Directive
Fuses: IEC 60320 - 1 per power supply	Weight:	Approx 17lbs (7.7kg) with 2 power supplies, no slots occupied	Signal Connections: BNC Per IEC 61169-8 Annex A (10 per slot)
Safety: - 2 per power supply		Approx. 32lbs (14.5kg) with 2 power supplies all slots occupied	Status Indicators: PSU status LED, Local Error/Failure LED
EMC: CSA Listed	Physical (S501FR):		Tally Output Connector:
Complies with CE Low voltage Directive	Dimensions:	4.9"W x 1.2"H x 10.5"D	4-pin terminal, relay N/O, N/C for status/fault alarm
Complies with FCC part 15, class A	Module Capacity:	(124mm W x 30mm H x 267mm D)	2A, 125V DC max
Complies with EU EMC directive	Weight:	1 single slot	0-40°C optimal performance
		1lb (.45kg)	0-50°C operating
Electrical (S501FR):			
Voltage: 12V DC Nominal			
Auto ranging, 100 to 240V AC power adapter			
Power Consumption:10W max			

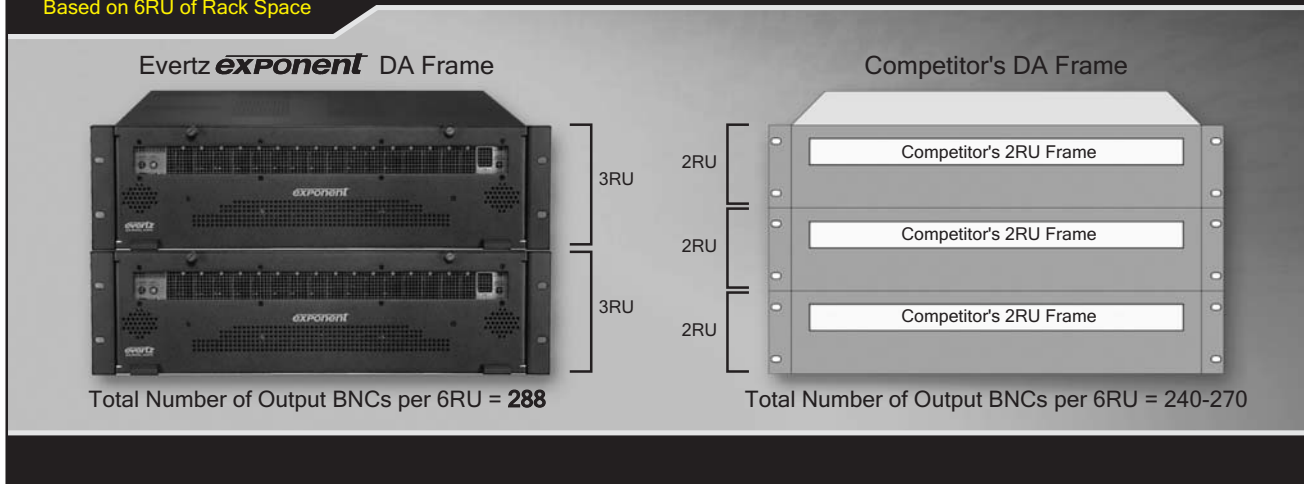
Ordering Information

500FR	Compact High Density Distribution Frame	S501FR	Standalone Compact High Density Distribution Frame
Ordering Options:		Ordering Options:	
+5PS		Redundant power supply	
Accessories:		Accessories:	
500PS		Additional power supply for S501FR	
		Rackmount panel mounts three S501FR enclosures in a 1RU rack space (Includes two blank panels for unfilled slots)	

An Industry Comparison

Based on 6RU of Rack Space

Most Dense Available



Notes:

- **exponent** achieves the highest density with 288 BNC outputs (per 6RU)
- **exponent** uses less power supplies thus less points of failure (per 6RU)

- **exponent** provides a direct connection to an SNMP network. Some competitive pseudo SNMP solutions require intermediate application servers or protocol translators which add latency, single point of failure issues, cost, and complexity.