



THE COMPLETE CONTROL ROOM SOLUTION

Today's control rooms require two key components: Routers & Multi-Image Display...
Evertz now offers a complete solution to address both...WITHOUT COMPROMISE



VIP-X

Control Room Routing Platform and Modular Multi-Image Display System

3

The VIP-X simultaneously addresses two common challenges by combining a functional and highly reliable control room routing platform with a modular multi-image display system in one integrated package. Building your next control room will be simple using the VIP-X, as it enables two complex items in the control room to function as a single system.

►VIP-X Family - The Complete Control Room Solution

The new VIP-X control room solution from Evertz® represents the best of Evertz® technology:

- Advanced routing technology: Xenon & EQX
- Advanced multi-viewer technology: MVP® & VIP
- Advanced user control system: MVP® server and Maestro™ software
- Highest quality multi-image outputs: Most advanced scaling technology

The VIP-X eliminates system complexity, saves space and is more economical compared to the traditional autonomous solutions. The VIP-X can be tailored for all control room signals and budget requirements. It is available in several package sizes from a 32 input system with up to 32 router outputs and as many as 24 multi-image displays, or it can be ordered as a larger systems that accommodate up to 288 inputs and 288 router outputs and as many as 72 multi-image displays.



►High Quality Image Reproduction

VIP-X multi-image display modules use the latest scaling technology. The technology is Evertz® proprietary and borrowed from our industry renowned up/down conversion products. The engine does not use image enhancement tricks to try and artificially enhance the input quality; it applies a single pass high quality-scaling algorithm which provides the highest quality reproduction of the source content.



►Complete Facility Solution

VIP-X is the complete solution for your next control room, or better yet your facility. Offering both a complete facility routing platform and industry leading multi-image display technology in a single modular package, no control room or facility is too large or too small.



►Any Input, Any Output, Any Display, Any Size...

VIP-X continues Evertz® tradition of truly flexible multi-image display systems. Each input in the system can be displayed any number of times at any size, with out compromise. Systems of any size offer this flexibility, even the largest VIP-X system allows any input to be displayed on each and every display each at a unique size.



►The Largest System in the Industry

VIP-X offers the largest system footprint in the industry. With inputs in the thousands, and display outputs in the hundreds, it is guaranteed to meet the largest facility requirements without compromise or blocking restrictions.



►Monitoring: On-screen and Using SNMP

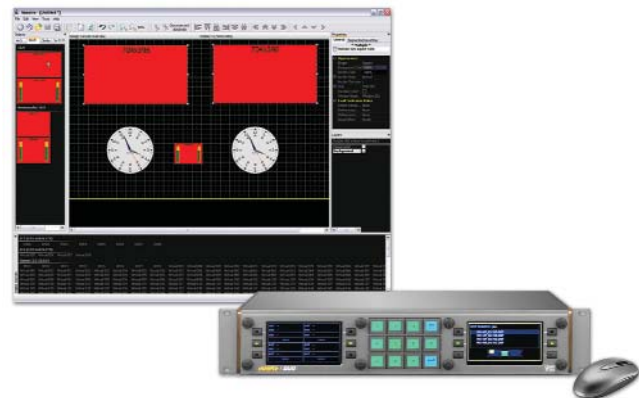
VIP-X offers real time monitoring both with visual on screen alarms, but also via SNMP. VIP-X continues Evertz® monitoring tradition, and offers all of the extensive alarming the industry has come to value, including monitoring for video loss, active picture level, and audio loss, over, and under, etc.



►Industry Standard User-Interface

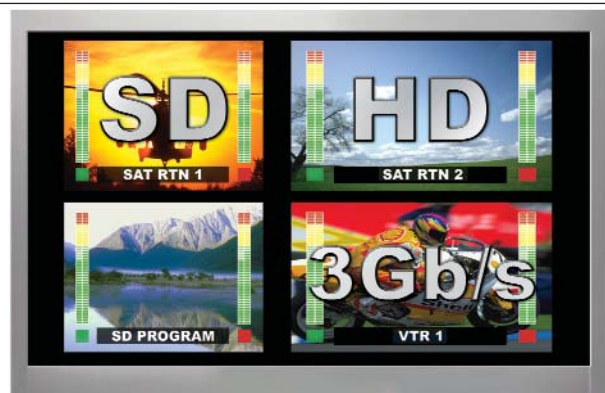
VIP-X multi-image display outputs are controlled using Evertz® industry standard graphical interface: Maestro™. Maestro™ is installed in the over a thousand locations world wide, and has been used by tens of thousands of operators in the industry. In fact, MVP® layouts can be loaded on VIP-X displays and VIP-X layouts on the MVP®.

Through it's use of simple drag and drop control, Maestro™ is simple to use and easy to learn. To simplify the control of VIP-X further, Evertz® has added on screen mouse and keyboard control.



►3Gb/s Support

VIP-X is a true 3Gb/s platform with end to end support of SMPTE 424M HD-SDI content. The router is not only capable of passing 3Gb/s, but the multi-image display system can display 3Gb/s images also. The product supports the complete range of SDI video content from 525i/625i SD-SDI, 720p/1080i to 3Gbs, all handled seamlessly and auto-sensed at the inputs.



VIP-X

Control Room Routing Platform and Modular Multi-Image Display System

3

The Complete Control Room Solution: the big differentiator between VIP-X and other multi-image display systems is that at the foundation is a purpose built routing platform. VIP-X can be used to satisfy both the routing component for any project and the multi-image display component, without compromise to either the router or the multi-viewer size or functionality. The solution is perfect for production control, outside broadcast, edit suites, audio control, graphics suites, and anywhere high quality multi-image display is needed.



Additional Proprietary
High Density Output
(Patent Pending)

Up to 576 Inputs

Crosspoint
Redundancy



Evertz® VIP-X Router
(True 3Gb/s Routing Platform)

X-LINK

Up to 864 Outputs

X-LINK



Industry Standard
Drag & Drop Layout
Design Package
with Maestro™



The Complete Solution Provider





Support for
Timers

Built-in Dynamic
Router Labels

VITC
Decode

Dynamic Clock
Display

Image Replication
Standard



Tally from Switcher

On-screen Mouse Control



VIP-X

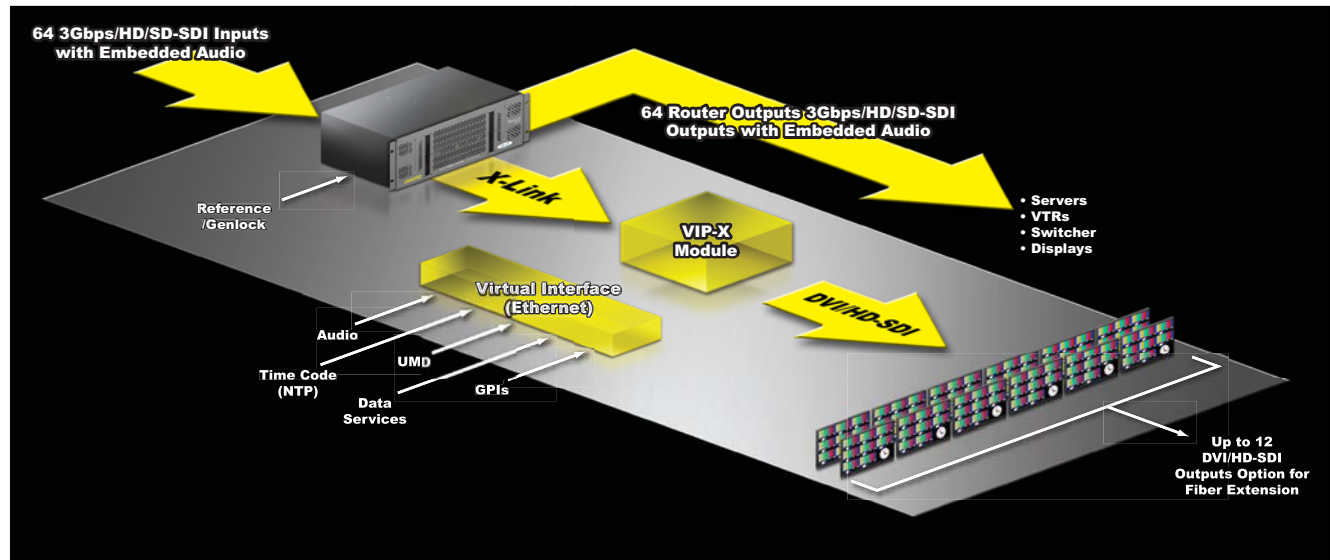
Control Room Routing Platform and Modular Multi-Image Display System

3

►XE4-VIPX Package

Uses the compact 4RU Xenon router as the foundation platform, with up to 64 3G/HD/SD inputs and up to 64 outputs for source routing, plus connectivity to up to 12 multi-image display outputs using X-LINK Technology and the modular 7767VIP-X output cards. VIP-X is very flexible and does not compromise the foundation router in anyway, offering any source to be independently routed to any router output, plus any source to be displayed any number of times, sizes and aspect ratios on any multi-image display output.

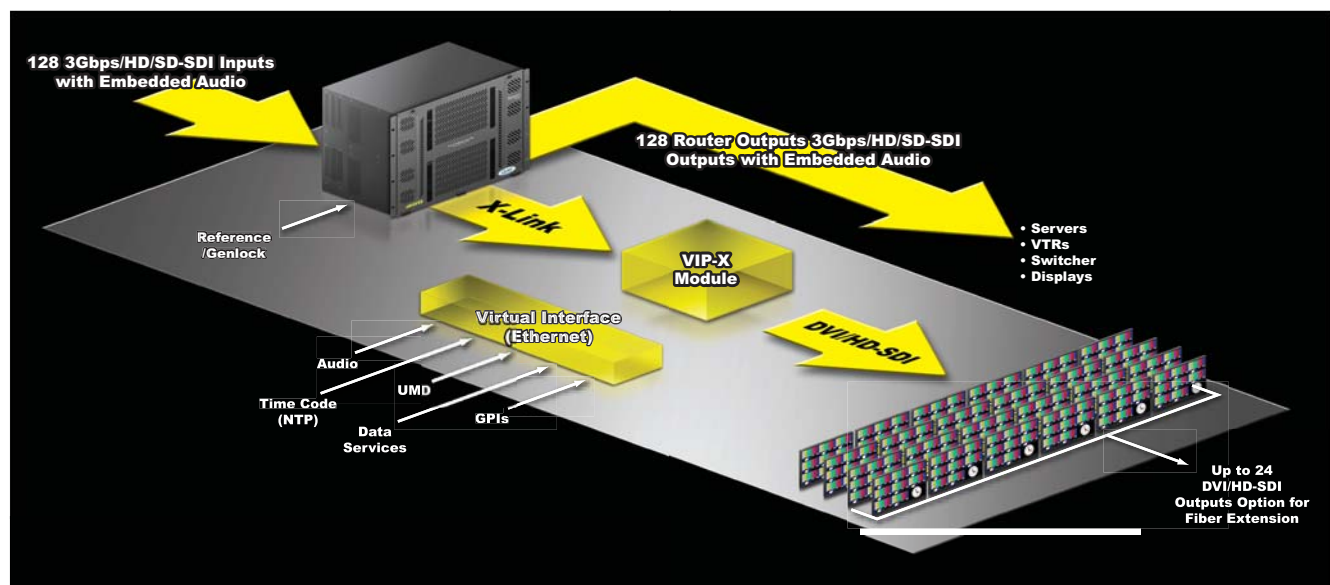
The modular 7767VIP-X card offers up to two DVI outputs, plus two HD-SDI outputs, and supports a wide range of display resolutions. The DVI output can be easily extended using the DVI-EV-EXT-PKG, which is a compact single fiber extension technology, supporting all output resolutions from the VIPX at distances of up to 500m (1,660').



►XE8-VIPX Package

Using the versatile 8RU Xenon router as the foundation platform, with up to 128 3G/HD/SD inputs and up to 128 outputs for source routing, plus connectivity to up to 24 multi-image display outputs using X-LINK Technology and the modular 7767VIP-X output cards. The Xenon routing platform is specifically built for live control and master control room routing, and therefore can be trusted to handle "on air" signals in the chain. VIP-X is very flexible and does not compromise the foundation router in anyway, offering any source to be independently routed to any router output, plus any source to be displayed any number of times, sizes and aspect ratios on any multi-image display output.

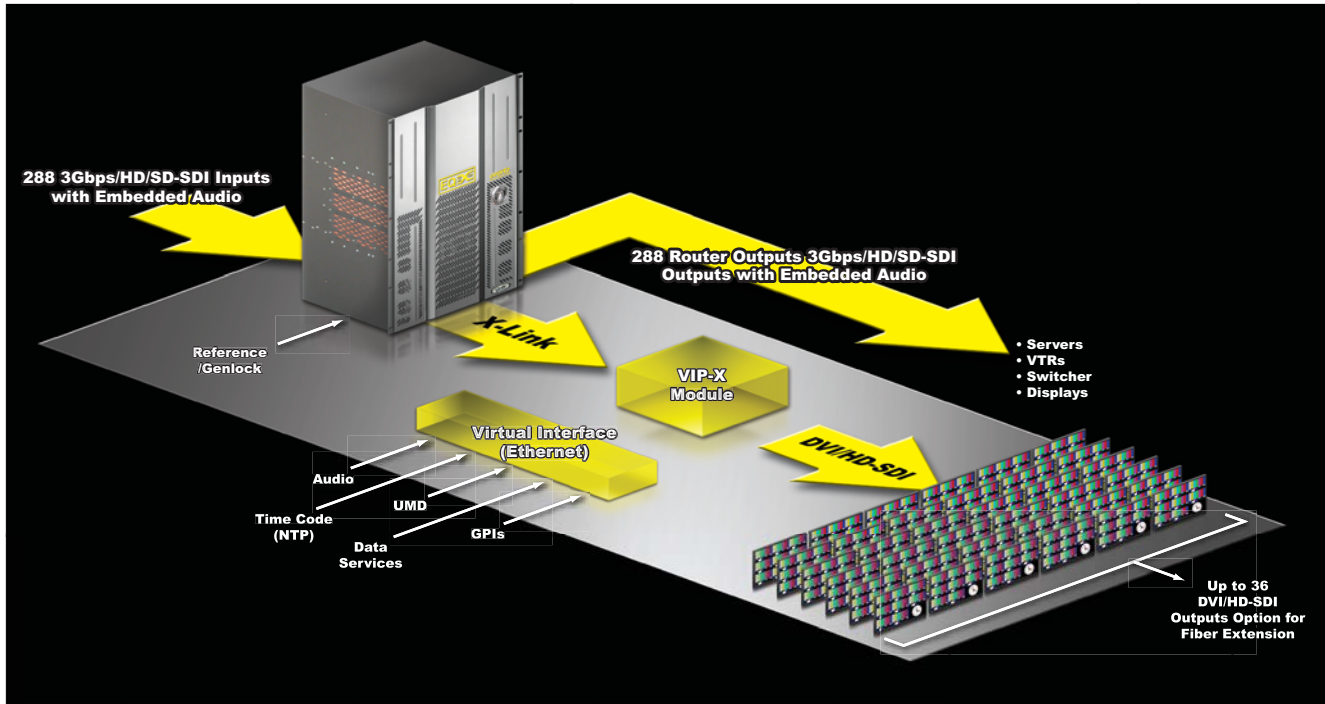
The modular 7767VIP-X card offers up to two DVI outputs, plus two HD-SDI outputs, and supports a wide range of display resolutions. The DVI output can be easily extended using the DVI-EV-EXT-PKG, which is a compact single fiber extension technology, supporting all output resolutions from the VIPX at distances of up to 500m (1,660').



►EQX16-VIPX Package

Using the 16RU EQX router as the foundation platform, with up to 288 3G/HD/SD inputs and up to 288 outputs for signal routing, plus connectivity to up to 36 multi-image display outputs using X-LINK Technology and the modular 7767VIP-X output cards. No other router is more advanced in terms of technology and redundancy, designed for core routing in the most demanding facilities, EQX is the most reliable router available to date. VIP-X is very flexible and does not compromise the foundation router in anyway, offering any source to be

independently routed to any router output, plus any source to be displayed any number of times, sizes and aspect ratios on any multi-image display output. The modular 7767VIP-X card offers up to two DVI outputs, plus two HD-SDI outputs, and supports a wide range of display resolutions. The DVI output can be easily extended using the DVI-EV-EXT-PKG, which is a compact single fiber extension technology, supporting all output resolutions from the VIPX at distances of up to 500m (1,660').



►Specifications

Serial Video Inputs:

Standard: 3Gb/s (SMPTE 424M), and/or HD-SDI (SMPTE 292M), SD-SDI (SMPTE259M-C)
Number of Inputs: Router platform dependent
Connector: BNC IEC 61169-8 Annex A
Input Impedance: 75Ω
Equalization: Automatic to 100m (Belden 1694A)
Return Loss: 5 - 1485MHz 15dB typical
Embedded Audio: SMPTE 272M-A

Graphic inputs (RGBHV/DVI) Video Input:

Standard: G-LINK (Evertz proprietary) requires video to G-LINK formatter
Number of Inputs: Router platform dependent
Connector: BNC IEC 61169-8 Annex A
Input Resolution: 640x480 (VGA) to 1600x1200 (UXGA)
Input Impedance: 75Ω

Serial Video Output:

Standard: 3Gb/s (SMPTE 424M), and/or HD-SDI (SMPTE 292M), SD-SDI (SMPTE259M-C)
Number of Outputs: Router platform dependent
Connector: BNC IEC 61169-8 Annex A
Signal Level: 800mV nominal

DC Offset: 0V ±0.5V
Rise and Fall Time: 200ps nominal (HD)
740ps nominal (SD)
Overshoot: < 10% of amplitude

Multi-Image Display Video Output per VIPX card:

Standard: VESA (DVI-D) up to WUXGA (1920x1200)
Number of Outputs: 2
Connector: DVI-I
Video: 1V p-p RGB, 60/50 Hz refresh
Impedance: 50Ω

Multi-Image Display Serial Video Output per VIPX card:

Standard: 3Gbps (SMPTE 424M), and/or HD-SDI (SMPTE 292M), SD-SDI (SMPTE259M-C)
Number of Outputs: 2
Connector: BNC IEC 61169-8 Annex A
Impedance: 75Ω

Genlock Input:

Type: NTSC/PAL color black
Level: 1V p-p nominal
Connector: Requires 7700FR-D (frame genlock option)

General Purpose Interface I/O per VIPX card:

Number of Inputs: 4
Number of Outputs: 2
Type: GPI: 1 Opto-isolated, active low with internal pull-ups to +5V
GPO: 1 Relay closure to ground
Input Signal: Closure to ground
Connector: HD-15

Input/Output Serial Port per VIPX card:

Number of Ports: 1 RS-232 (pins 6,7) or 1 RS-422 (pins 1,2,6,7)
Connector: HD-15
Baud Rate: Up to 1Mbaud
Format: Image Video, TSL

Ethernet:

Network Type: Fast Ethernet 100 Base-TX 1EEE
802.3U standard for 100Mbps base band CSMA/CD local area network
Connector: RJ-45 x2

Electrical VIPX card:

Voltage: +12V DC
Power: 75W

►Ordering Information

PKGVIPX-XE4

PKGVIPX-XE4-3232S-2, 4, 6, 8, 10 & 12
Xenon 4RU, 32 SD inputs, 32 SD outputs, plus 1 VIPX16x2 up to 6 VIPX16x2 displays

PKGVIPX-XE4-3232S-2, 4, 6, 8, 10 & 12

Xenon 4RU, 32 HD inputs, 32 HD outputs, plus 1 VIPX16x2 up to 6 VIPX16x2 displays

PKGVIPX-XE8

PKGVIPX-XE8-3232S-2, 4, 6, 8, 10 & 12
Xenon 8RU, 32 SD inputs, 32 SD outputs, plus 1 VIPX16x2 up to 12 VIPX16x2 displays

PKGVIPX-XE8-3232S-2, 4, 6, 8, 10 & 12

Xenon 8RU, 32 HD inputs, 32 HD outputs, plus 1 VIPX16x2 up to 12 VIPX16x2 displays

EQX SAMPLE PACKAGES:

PKGVIPX-EQX16-18H-2 up to 36
EQX 16RU, 18 HD inputs, (no outputs), plus 1 VIPX16-2 displays up to 18VIPXx16x2 displays

PKGVIPX-EQX198x18-12/18-24

EQX 16RU, 198 HD inputs, 18HD outputs, plus 6 VIPX16-2 displays/plus 12 VIPX16-2 displays

PKGVIPX-EQX198x108-12

EQX 16RU, 198 HD inputs, 108HD outputs, plus 6 VIPX16-2 displays

PKGVIPX-EQX198x108-24

EQX 16RU, 198 HD inputs, 108HD outputs, plus 12 VIPX16-2 displays