

[www.evertz.com](http://www.evertz.com)



# VIPX

**The Complete Control Room Solution**

featuring





The VIP-X simultaneously addresses two common challenges by combining a functional and highly reliable routing platform with a modular multi-image display system in one integrated package. Building your next control room will be simple using VIP-X, as it enables two complex items in the control room to function as a single system.



### ***The Complete Control Room Solution***

The VIP-X eliminates system complexity, saves space and is more economical compared to the traditional autonomous solutions. The VIP-X can be tailored for all control room signals and budget requirements.

It is available in several package sizes, from a 32 input system with up to 32 router outputs and as many as 24 multi-image displays, up to larger systems that accommodate up to 288 inputs and 288 router outputs and as many as 72 multi-image displays.



### ***Highest Quality Image Reproduction***

The VIP-X multi-image display modules use the latest scaling technology. The technology is Evertz® proprietary and borrowed from our industry renowned up/down conversion products.

The engine does not use image enhancement tricks to try and artificially enhance the input quality; it applies a single pass high quality scaling algorithm which provides the highest quality reproduction of the source content.



### ***Any Input, Any Output, Any Display, Any Size...***

The VIP-X continues Evertz® tradition of truly flexible multi-image display systems. Each input in the system can be displayed any number of times at any size, without compromise.

Systems of any size offer this flexibility - even the largest VIP-X system allows any input to be displayed on each & every display at a unique size.



### ***The Largest System in the Industry***

The VIP-X offers the largest system footprint in the industry. With inputs in the thousands, and display outputs in the hundreds, it is guaranteed to meet the largest facility requirements without compromise or blocking restrictions.

# VIP-X: Control Room Routing Platform & Modular Multi-Image Display System

Up to 576 Inputs

Crosspoint  
Redundancy



**Evertz® VIP-X Router**  
(True 3Gb/s Routing Platform)

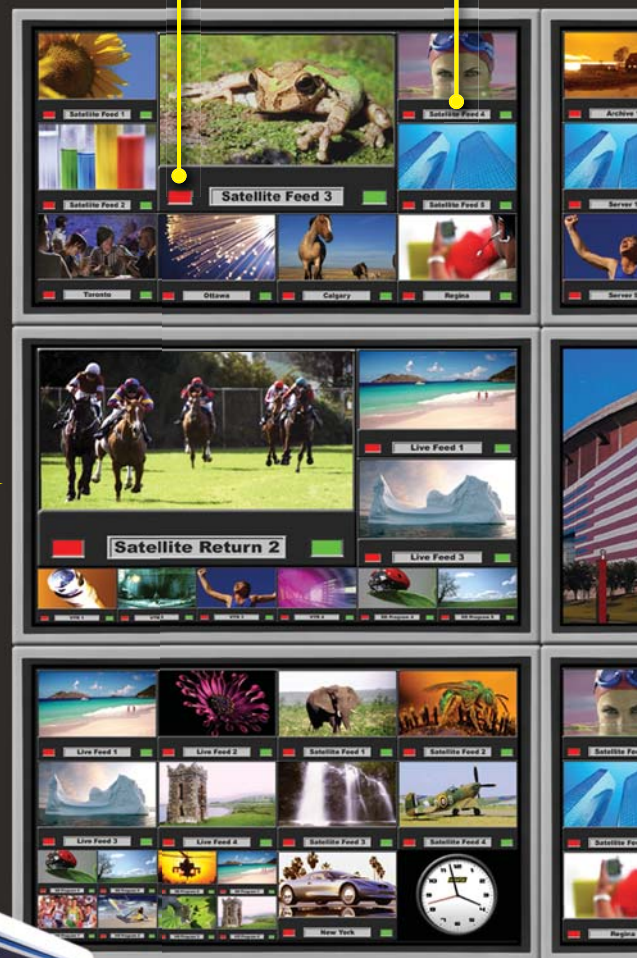
Up to 864  
Outputs

X-LINK

Additional Proprietary  
High Density Output  
(Patent Pending)

Tally from  
Switcher

Dynamic Source  
Labels (UMD)



**Maestro™**

- Industry Standard  
Drag & Drop Layout  
Design Package



## EQX26-VIPX

Using the 26RU EQX router as the foundation platform, with up to 576 3G/HD/SD inputs and up to 576 outputs for signal routing, plus connectivity to multi-image display outputs using X-LINK Technology and the modular 776VIP-X output cards.

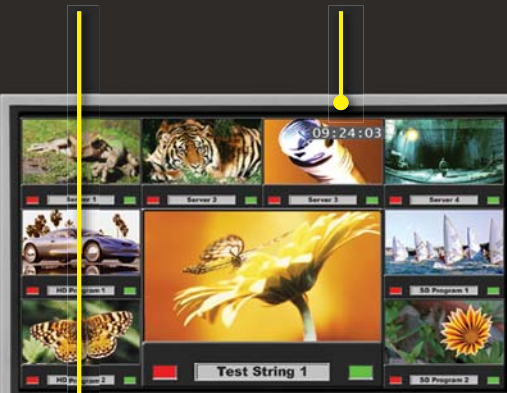
## EQX16-VIPX

Using the 16RU EQX router as the foundation platform, with up to 288 3G/HD/SD inputs and up to 288 outputs for signal routing, plus connectivity to multi-image display outputs using X-LINK Technology and the modular 776VIP-X output cards.

**Support for Timers**



**On-Screen Mouse Control**



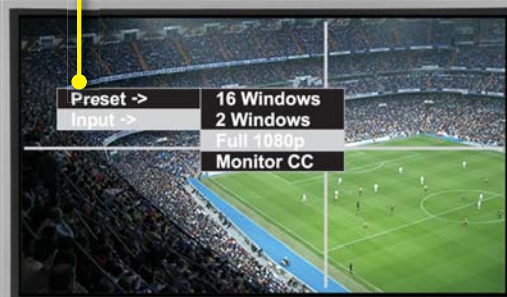
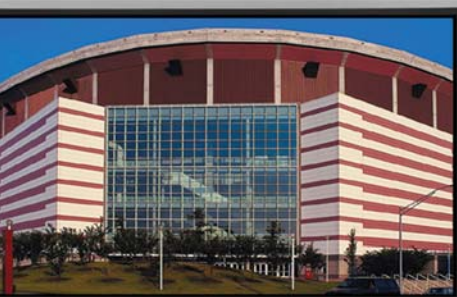
**VITC Decode**



**Dynamic Clock Display**



**Image Replication Standard**



**3rd Party Switcher**



**3000DCP Desktop Control Panel**



**Keyboard & Mouse Control via CP-2200E Control Panel**



## **XE8-VIPX**



Using the versatile 8RU Xenon router as the foundation platform, with up to 128 3G/HD/SD inputs and up to 128 outputs for source routing, plus connectivity to multi-image display outputs using X-LINK Technology and the modular 7767VIP-X output cards.

## **XE4-VIPX**



Using the compact 4RU Xenon router as the foundation platform, with up to 64 3G/HD/SD inputs and up to 64 outputs for source routing, plus connectivity to multi-image display outputs using X-LINK Technology and the modular 7767VIP-X output cards.

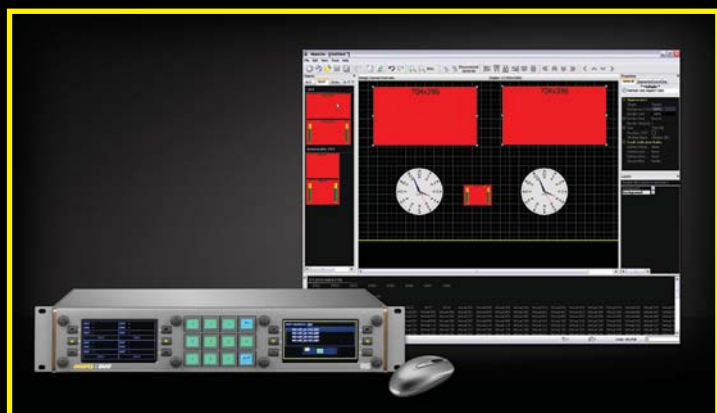


The big difference between the VIP-X and other multi-image display systems is that at the foundation is a purpose-built routing platform. VIP-X can be used to satisfy the routing and multi-viewer components for any project, without compromise to the router or multi-viewer size or functionality. The solution is perfect for anywhere needing high quality image display.



## Complete Facility Solution

The VIP-X is the complete solution for your next control room or, better yet, your facility. Offering both a complete facility routing platform and industry-leading multi-image display technology in a single modular package, no control room or facility is too small. The advantage of the VIP-X is that none of the outputs from the router are wasted.



## Industry Standard User-Interface

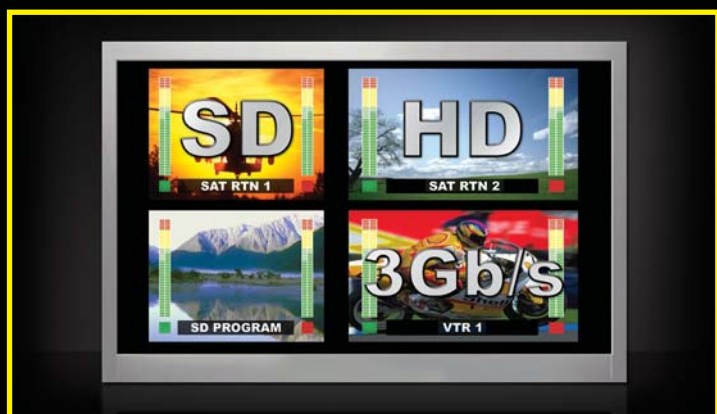
The VIP-X multi-image display outputs are controlled using Maestro™ software, Evertz® industry standard graphical interface. Maestro™ is now installed in over 1000 locations world-wide, and has been used by tens of thousands of operators in the industry. In fact, MVP® layouts can be loaded on VIP-X displays, and VIP-X layouts on the MVP® as well.

Through it's use of simple drag-and-drop control, Maestro™ is simple to use and easy to learn. To simplify the control of VIP-X further, Evertz® has added on-screen mouse & keyboard control via the CP-2200E control panel.



## Monitoring: On-screen and Using SNMP

The VIP-X offers real-time monitoring both with visual on-screen alarms, and also via SNMP. The VIP-X continues Evertz® monitoring tradition, and offers all of the extensive alarming the industry has come to value, including monitoring for video loss, active picture level, audio loss, over, under etc.



## 3Gb/s Support

The VIP-X is a true 3Gb/s platform, with end-to-end support of SMPTE 424M HD-SDI content. The router is not only capable of passing 3Gb/s, but the multi-image display system can display 3Gb/s images also.

The product supports the complete range of SDI video content from 525i/625i SD-SDI, 720p/1080i to 3Gb/s, all handled seamlessly and auto-sensed at the inputs.



## Specifications

### Serial Video Inputs:

Standard: 3Gb/s (SMPTE 424M), and/or  
HD-SDI (SMPTE 292M),  
SD-SDI (SMPTE259M-C)  
# of Inputs: Router platform dependent  
Connector: BNC IEC 61169-8 Annex A  
Input Impedance: 75Ω  
Equalization: Automatic to 100m (Belden 1694A)  
Return Loss: 5 - 1485MHz 15dB typical  
Embedded Audio: SMPTE 272M-A

### Graphic inputs (RGBHV/DVI) Video Input:

Standard: G-LINK (Evertz proprietary) requires  
video to G-LINK formatter  
# of Inputs: Router platform dependent  
Connector: BNC IEC 61169-8 Annex A  
Input Resolution: 640x480 (VGA) to 1600x1200 (UXGA)  
Input Impedance: 75Ω

### Serial Video Output:

Standard: 3Gb/s (SMPTE 424M), and/or  
HD-SDI (SMPTE 292M),  
SD-SDI (SMPTE 259M-C)  
# of Outputs: Router platform dependent  
Connector: BNC IEC 61169-8 Annex A  
Signal Level: 800mV nominal

DC Offset: 0V  $\pm$ 0.5V  
Rise & Fall Time: 200ps nominal (HD)  
740ps nominal (SD)  
Overshoot: < 10% of amplitude

### Multi-Image Display Video Output per VIP-X card:

Standard: VESA (DVI-D) up to WUXGA  
(1920x1200)  
# of Outputs: 2  
Connector: DVI-I  
Video: 1V p-p RGB, 60/50 Hz refresh  
Impedance: 50Ω

### Multi-Image Display Serial Video Output per VIP-X card:

Standard: 3Gb/s (SMPTE 424M), and/or  
HD-SDI (SMPTE 292M),  
SD-SDI (SMPTE 259M-C)  
# of Outputs: 2  
Connector: BNC IEC 61169-8 Annex A  
Impedance: 75Ω

### Genlock Input:

Type: NTSC/PAL color black  
Level: 1V p-p nominal  
Connector: Requires 7700FR-D (frame  
genlock option)

### General Purpose Interface I/O per VIP-X card:

# of Inputs: 4  
# of Outputs: 2  
Type: GPI: 1 Opto-isolated, active low with  
internal pull-ups to +5V  
GPO: 1 Relay closure to ground  
Input Signal: Closure to ground  
Connector: HD-15

### Input/Output Serial Port per VIP-X card:

# of Ports: 1 RS-232 (pins 6,7) or 1 RS-422  
(pins 1,2,6,7)  
Connector: HD-15  
Baud Rate: Up to 1Mbaud  
Format: Image Video, TSL, others

### Ethernet:

Network Type: Fast Ethernet 100 Base-TX 1EEE  
802.3U standard for 100Mb/s  
baseband CSMA/CD local area  
network  
Connector: RJ-45 x2

### Electrical VIP-X card:

Voltage: +12V DC  
Power: 75W

## Ordering Information

### PKGVIPX-XE4

PKGVIPX-XE4-3232S-2, 4, 6, 8, 10, 12  
Xenon 4RU, 32 SD inputs, 32 SD outputs, plus 1  
VIPX16x2 up to 6 VIPX16x2 displays

### PKGVIPX-XE4-3232S-2, 4, 6, 8, 10, 12

Xenon 4RU, 32 HD inputs, 32 HD outputs, plus 1  
VIPX16x2 up to 6 VIPX16x2 displays

### PKGVIPX-XE8

PKGVIPX-XE8-3232S-2, 4, 6, 8, 10, 12  
Xenon 8RU, 32 SD inputs, 32 SD outputs, plus 1  
VIPX16x2 up to 12 VIPX16x2 displays

### PKGVIPX-XE8-3232S-2, 4, 6, 8, 10, 12

Xenon 8RU, 32 HD inputs, 32 HD outputs, plus 1  
VIPX16x2 up to 12 VIPX16x2 displays

### EQX Sample Packages

PKGVIPX-EQX198x18-12/18-24  
EQX 16RU, 198 HD inputs, 18 HD outputs, plus 6  
VIPX16-2 displays/plus 12 VIPX16-2 displays

### PKGVIPX-EQX198x108-12, 24

EQX 16RU, 198 HD inputs, 108 HD outputs, plus 6  
or 12 VIPX16x2 displays



**US & International Sales**  
**905.335.3700 • 1.877.995.3700**  
**sales@evertz.com • www.evertz.com**