



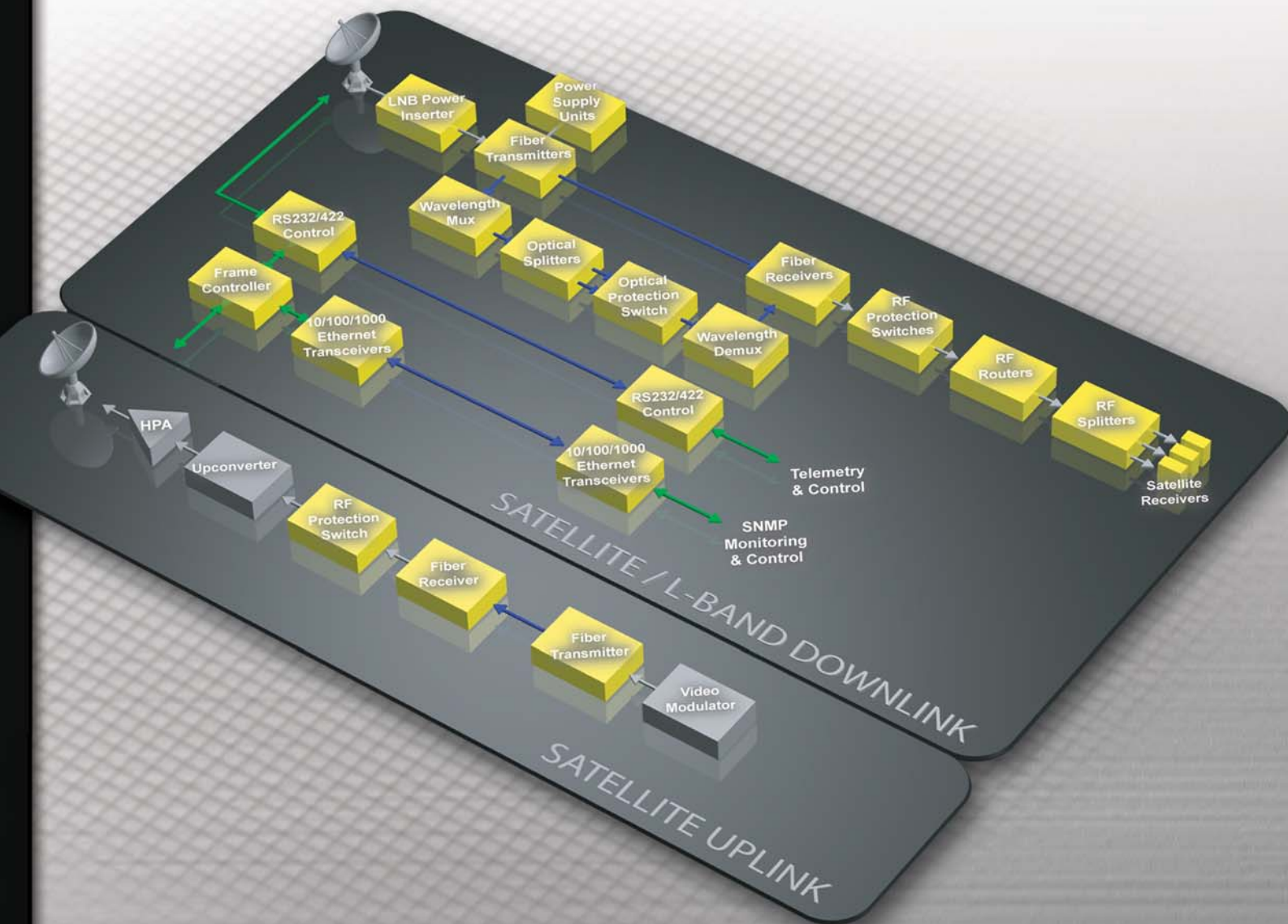
www.evertz.com



PRODUCT SOLUTIONS

Complete RF Signal Distribution, Management & Transport

From LNB to IRD, Evertz® offers a complete range of products for RF signal distribution, routing, transport, protection switching and LNB power. Solutions are available to cover L-Band and 70/140MHz signal ingest or uplink applications.



XRF1A & XRF6 RF Routers

Designed for mission-critical applications, the XRF Series RF routers provide flexible routing, control and monitoring of RF signals. Industry leading characteristics for form factor, performance and reliability are combined with comprehensive monitoring & control. Advanced features include automatic (AGC) or manual gain control, input RF power monitoring, and wide bandwidth 70/140MHz IF off-air DTV and extended L-Band ranges.

XRF1A - 1RU 16x16 RF Router

- Built-in user friendly front control panel
- Redundant power supplies
- Expandable to 32x32 (with 16x16 model)

XRF6 - 6RU 64x64 Modular RF Router

- All active components are front loading and hot-swappable
- Redundant power supplies and controllers
- Expandable to 512x512

XRF Series Common Features

- Highest density in the industry saving valuable rack space
- Wide passband allows 70/140MHz IF, extended L-Band and off-air DTV signals in a single product
- Low noise figure, high isolation (in/out, in/in, out/out)
- RF input power monitoring
- Manually adjustable & automatic gain control per channel
- Comprehensive monitoring & control via serial interface or SNMP/VistaLINK®

Product Family Overview

Modular Series

Evertz® signal distribution, fiber transport, bypass protection and LNB power products provide high performance and advanced features such as RF & optical power monitoring, adjustable gain and SNMP monitoring & control. Front-loading, hot-swappable cards are backed by the security of redundant, hot-swappable power supplies. This provides high reliability, density and easy system expansion, reconfiguration and maintenance unmatched by non-modular, rackmount products.



7700FR

* All 7703, 7707 and 7708 products offer comprehensive monitoring and control via VistaLINK®/SNMP

Distribution Amplifiers/Splitters

7703DA4-RF - 1x4 Active RF Splitter

7703DA8-RF - 1x8 Active RF Splitter

- Wideband 10MHz to 3GHz operation
- Built-in RF power meter
- Optional 13/17V DC LNB power with short circuit protection
- Adjustable gain

7702SP2 - 1x2 Passive RF Splitter

7702SP4 - 1x4 Passive RF Splitter

- Wideband 40-2200MHz operation
- Flat frequency response
- LNB version passes DC power through both ports with steering diodes

Protection Switches

7703BPX-LB - L-Band 2x1 Protection Switch

7703BPX-IF - 70/140MHz 2x1 Protection Switch

- Main/standby switching scheme
- Intelligent auto-switching based on user-selectable RF threshold levels
- Manual control mode allows use as a 2:1 switch

LNB Power

7703LPS-2 - Dual Port LNB Power Inserter

- 13/18V DC switchable
- Powers two LNBs at 400mA each
- 22kHz tone for LNB local oscillator control
- RF input power monitoring
- LNB current monitoring to help detect LNB faults
- Active short circuit protection

Fiber Transmitters & Receivers

7707LTA/LR - L-Band Fiber Tx/Rx

7707IFTA/IFRA - 70/140MHz IF Fiber Tx/Rx

- 950-2250MHz operation on L-Band version
- 250-2250MHz wideband version for stacked signals
- 30-200MHz operation on IF version
- Protocol independent - passes any modulation format
- Built-in optical and RF power meters
- 13/17V DC LNB power with short circuit protection on L-Band version Tx
- Automatic or manual gain control modes
- 1310nm, 1550nm, CWDM and DWDM transmitters available for short to long haul & multiplexing applications
- Standard and high-sensitivity receivers

7708LRA - L-Band Fiber Rx

- Companion Receiver to the 2408LT providing SmartMON™ capability
- Protocol independent - passes any modulation format
- Manual, automatic and intelligent gain control modes
- Standard and high sensitivity receivers

7707CATVTA/CATVRA - CATV Fiber Tx/Rx

- 50-850MHz operation
- Full 80/110 PAL/NTSC channel load capability
- +8 and +11 dBm laser power versions available
- Low CTB & CSO, high CNR

Selector Switches

7703R8x1-RF - 1x8 switch

7703R16x1-RF - 1x16 switch

- DC-3GHz bandwidth
- Low insertion loss, high return loss
- Bi-directional

Evertz® also offers a complete line of related fiber optic products including CWDM & DWDM multiplexors, splitters, amplifiers, data transceivers and protection switches.

Contact Evertz® or see www.evertz.com for more information.

Product Family Overview

2408LT & 2400PSU-8

Standalone fiber transmitters and power supplies for outdoor applications, offering advanced features including adjustable gain, AGC and SmartMON™ remote monitoring capability.



2408LT - Standalone L-Band Fiber Tx

- Extended frequency response
- Compact standalone package with weatherproof option
- Protocol independent - passes any modulation format
- Wide dynamic range with flat frequency response
- High linearity, low noise
- Automatic or manual gain control
- SmartMON™ provides remote monitoring capability via SNMP without the need for a separate data connection to the 2408LT

2400PSU-8 Eight Channel DC Power Supply

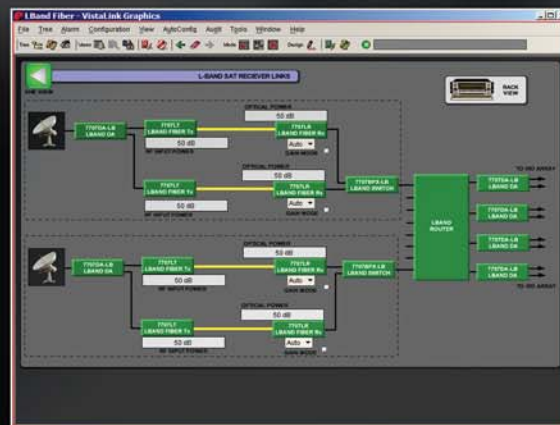
- Compact, weatherproof standalone enclosure
- Provides diode isolated DC outputs to power up to eight 240X fiber transmitters
- Dual, redundant internal power supplies with individual AC inputs
- Active, individual output short circuit and overload protection
- Power supply status is relayed to the 2408LT for complete system monitoring via SmartMON™ capability

SRF3



SRF1 Series - 1RU 1x2 or 1x4 Passive Splitter Array SRF3 Series - 3RU 1x2 or 1x4 Passive Splitter Array

- Wideband 40-2200MHz operation
- Flat frequency response
- -20dB monitoring tap on each splitter
- High density - e.g. 16 1x2 splitters in 1RU, 64 1x2 splitters in 3RU
- Ideal for XRF Series router system expansion or other rackmount, high-density splitter/combiner applications



SNMP Monitoring & Control

The VistaLINK® PRO product suite unites all Evertz® SNMP-based products and third-party systems under a single platform providing customized, detailed, monitoring and "real-time" equipment configuration via SNMP. VistaLINK® PRO PLUS provides an advanced user-configurable GUI for graphical renditions of the facility. Global views with "drill down" capability facilitate intuitive and straightforward access to all monitored equipment.

VistaLINK® PRO

- 100% SNMP based monitoring & configuration control
- Rich graphical interface with drill down & analysis capability
- Comprehensive alarm indication, logging and database management
- Web and scheduler clients
- Third party equipment support

For detailed product specifications and ordering information, please contact Evertz® sales or visit www.evertz.com



US & International Sales
905.335.3700
sales@evertz.com

US West Coast Sales
818.558.3910
LASales@evertz.com

New York Sales
newyorksales@evertz.com

Asia Pacific Sales
asiapacificsales@evertz.com

Washington DC Sales
703.330.8600
dcsales@evertz.com

UK Sales
011 44 118 935 0200
uksales@evertz.com