

DIGITAL MATRIX

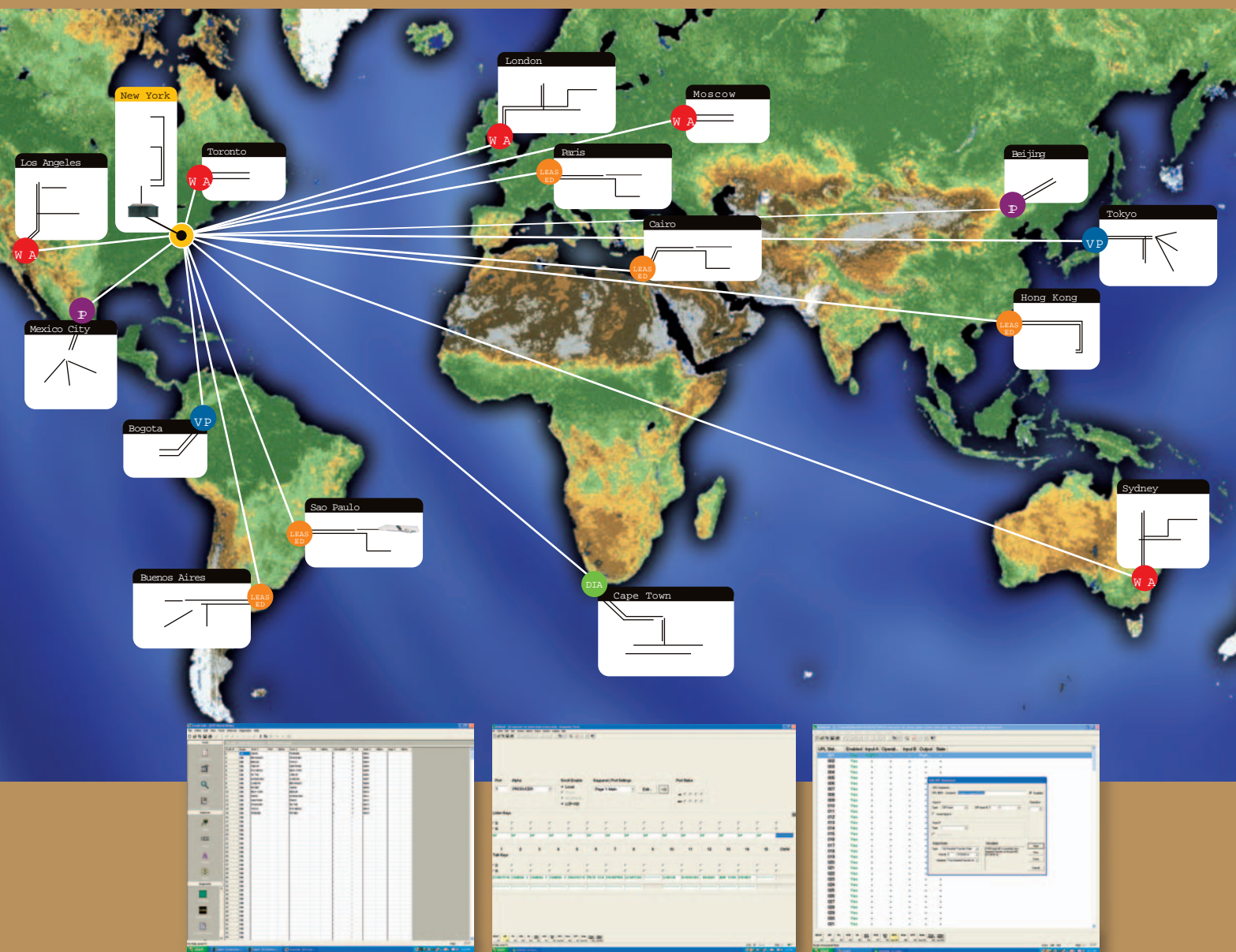
Intercom Systems

RTSTM

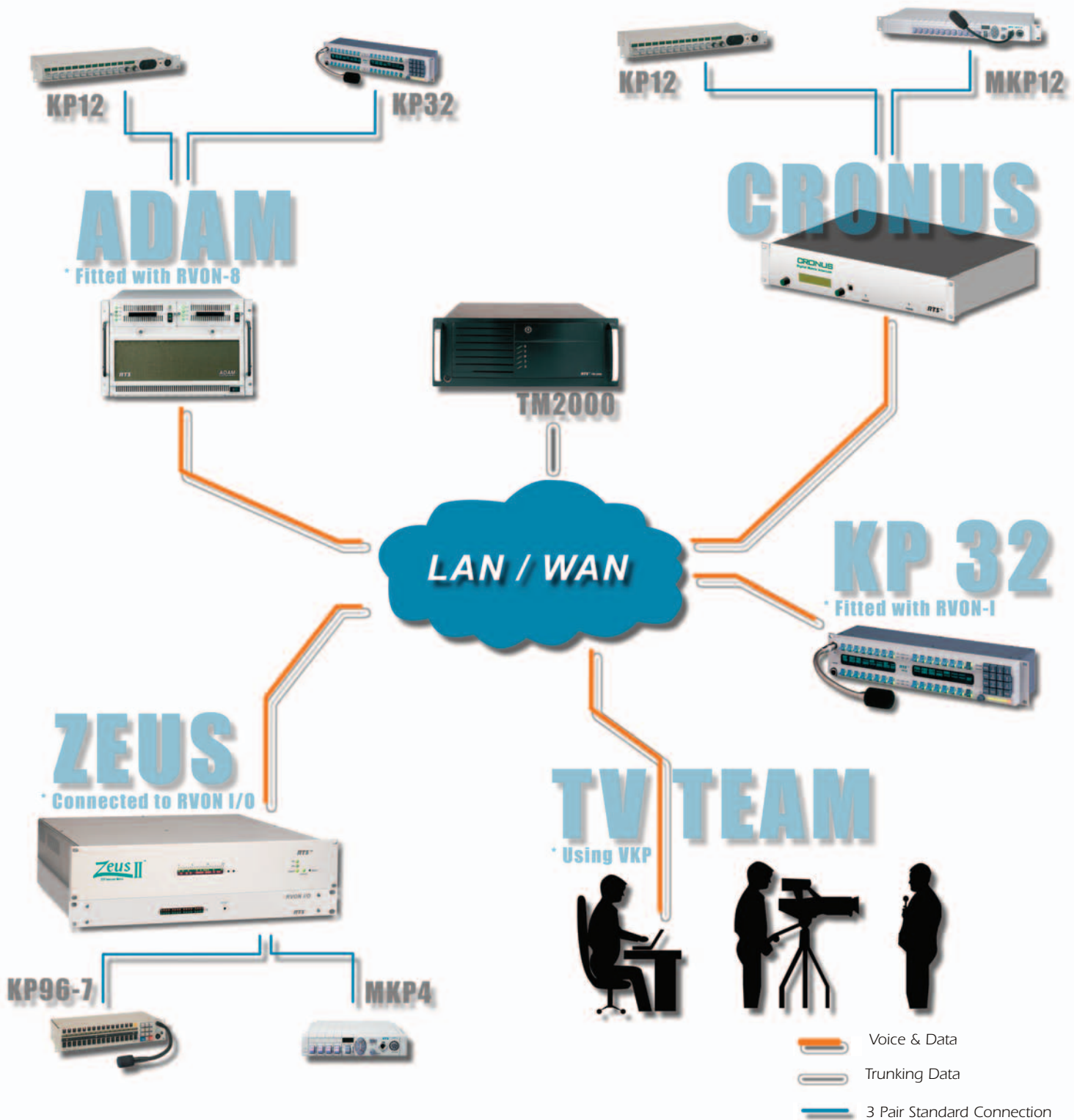
Matrices, User Stations, and Accessories

RTS Digital Matrix Intercom Systems - Interconnecting the world.

Worldwide Connectivity



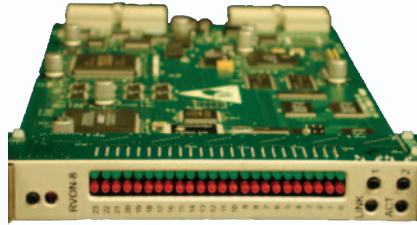
VoIP



RVON-8

RTS™ Voice Over Network Card

Installed directly into ADAM™ Matrix Intercom Systems, the RVON-8 (RTS Voice OverNetwork) Card expands the connectivity of the ADAM Intercom by supporting 8 audio channels (ports) in and out. Each channel has configurable network and bandwidth parameters that can be tailored to individual network requirements, as well as ancillary data for keypanels and trunking control. As with all ADAM Intercom products, the RVON-8 card is hot swappable and configurable through AZedit™ configuration soft-ware. The RVON-8 card supports both Telex Intelligent Trunking over IP, as well as remote keypanels and virtual keypanels via VOIP. Fully compatible with Internationally recognized standards, the RVON-8 card supports the following protocols: G.711, G.729AB, G.723(2 speeds), and G.722.



Features

- **Installation** -The RVON-8 card is hot-swappable and installs in any available slot in an ADAM Intercom Matrix. The card provides a single RJ-45 Ethernet connection for use with any 10/100 Mb network.
- **Trunk Capable** -The RVON-8 card supports ancillary data control for use with Telex® Intelligent Trunking.
- **Ethernet Compatible** -Fully ethernet capable. RVON-8 uses standard ethernet protocols and is fully compatible with all Ethernet compliant devices and networks.
- **AZedit Configurations** -The user has the ability to adjust the audio parameter of each channel of the RVON-8 card, to match the available bandwidth of the network.
- **Addressing** -Eight individually addressable audio channels. The RVON-8 card can feed simultaneously VOIP (voice over internet protocol) capable key panels, matrices, VKP enabled PC's.

RVON-I/O

RTS™ Voice Over Network I/O Interface

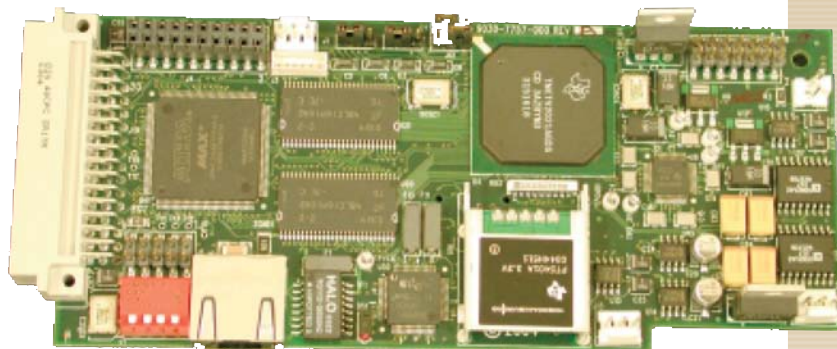
The RVON-IO can be used in a variety of applications where it is not possible to use the RVON-8 card. RVON-IO converts eight analogue four wire audio channels and key panel data to a single digital channel using VOIP protocol. This allows RVON-IO to be used as the interface with a variety of RTS intercom products such as ADAM CS, Zeus and CS9500 Series matrices. In addition RVON-IO may also be used as a standalone solution for any application where analogue audio must be routed via LAN or WAN.



Features:

- **Installation** -The RVON-IO is a stand alone 1RU rack mount unit. The unit will interface up to 8 analogue 4 wires to a single RJ-45 Ethernet connection for user with any 10/100 base network.
- **Trunk Capable** -The RVON-8 card supports ancillary data control for use with Telex® Intelligent Trunking.
- **Ethernet Compatible** -Fully ethernet capable. RVON-8 uses standard ethernet protocols and is fully compatible with all Ethernet compliant devices and networks.
- **AZedit Configurations** -The user has the ability to adjust the audio parameter of each channel of the RVON-8 card, to match the available bandwidth of the network

RVON-1



Features

- Installation - The RVON-1 module can be plugged into any KP-32 family keypanel.
- Protocol - The RVON-1 card is supporting three different IP protocols (G.711, G.729AB and G.723 (2 speed)).
- Connectivity - Standard RJ45 Ethernet plug.

Voice Over Network KP32 Module

The RVON-1 module is installed direct into a KP32 family keypanel and provides voice over IP (Internet Protocol) communication for the RTS ADAM intercom. This combination is an integrated solution for connecting standard keypanels the intercom matrix over standard IP network. The RVON-1 is compatible with any RTS Intercom system with a suitable RVON interface (RVON-8 or RVON I/O). All IP and matrix system relevant parameter are configurable through the keypanel service menu and Telex's configuration software AZedit. It is also compatible with internationally recognized standards and supports three different protocols (see feature box).

RVON-VKP



Voice Over Network Virtual Keypanel

The RTS VoIP Virtual Keypanel (VKP) is a Windows based application that allows any user to have a fully functioning RTS Matrix user station on their PC. The virtual keypanel application connects via the PC's ethernet port that can support IP protocols, including LAN, WAN and VPN. The RTS VKP application is compatible with any RTS Matrix intercom equipped with the RVON interface. The VKP brings a new level of flexibility to your RTS matrix intercom.

Requirement:

- Operating System: Windows 2000 or higher
- Sound Card: Must be detected as an audio device
- Peripherals: Microphone and loudspeaker or headset
- Hard Drive: 5 MB space required
- Connections: Ethernet Connection and USB port for Security Dongle
- Protocols: G711



Digital Matrix Intercom System

The RTS family of Digital Intercom matrices is the most extensive, most widely used, and most "obsolescence proof" line of intercoms in the world today. From the "top of the line" ADAM matrix, available in sizes from 8 to 1,000+ users, to the original Zeus 24 port matrix, RTS matrices are the standards for reliable, mission critical communications in broadcast, military, industrial and entertainment applications.

Features

- Individual cross-point level controls
- Non-volatile memory for all system setup and assignment information
- Real-time, on-line configuration and monitoring
- RTS UPL User Programmable Language for custom system configurations via pull down menus
- 8 GPI inputs and outputs standard, may be increased up to 255
- Sizes from 8 to 1,000+ users
- Multi-level IFB, ISO, Party-Lines, Groups, and GPI all STANDARD
- Dual Purpose Ports support BOTH keypanels and 4W signals
- Integrated support for RTS Intelligent Trunking of 31 matrices (ADAM, ADAM-CS and ZEUS II)

AES-3

- supports 8 audio channels in and out through 8 AES-3 connections over coaxial cable.
- Hardware and firmware compatible with current and next generation ADAM matrix systems.

AIO-16

- supports 16 ports of audio IN and OUT for each card installed (up to 17 cards) in the system.
- backward compatible, meaning that it coexists with existing AIO-8 systems, running side by side and seamlessly integrating into the port scheme already in place.

RVON-8

- supports both Telex® Intelligent Trunking over IP, as well as support for remote keypanels and virtual keypanels via VOIP.
- Fully Ethernet capable, using standard ethernet protocols and is compatible with 10 BASE-T or 100 BASE-TX Ethernet compliant devices and networks.

RVON-1

- Provides voice over IP communications for the RTS® ADAM intercom family.
- Provides a single RJ-45 Ethernet connection for use with a 10 BASE-T or 100 BASE-TX network

RVON-I/O

- Takes legacy analog audio and converts it to digital VOIP audio expanding the boundary of digital audio to include analog audio.
- Supports 8 channels IN and OUT and has configurable network and bandwidth parameters to meet the needs of most network functions.

VKP

- using the same VOIP technology as the RVON cards, the VKP is compatible with any RTS® Matrix Intercom system equipped with either RVON-8 or RVON-I/O interfaces.
- two standard, easy-to-use, keypanel gui interfaces that can operate from the same PC that runs your general purpose applications, such as spreadsheets, word processors, and AZedit.
- easily installed onto a PC, insert the USB Security Dongle, install the software, connect to the LAN, DONE.

ADAM

(Advanced Digital Audio Matrix)

The largest and most expandable in the RTS Matrix family, ADAM provides up to 136 ports in a single 7 RU frame, and can be expanded to 1,000 ports in a single matrix. ADAM comes standard with redundant power supplies and redundant controllers, and features automatic changeover in the event of failure. ADAM is available with a wide variety of cabling options, including RJ-11, DB-9, jackfields, and many others.





ADAMCS

Just like its "big brother" ADAM, ADAM-CS comes standard with redundant power supplies and controllers. Providing up to 64 ports in just 5 RU of space, ADAM-CS provides a cost-effective solution, where space is critical, and reliability and performance canNOT be compromised.



ZEUS

Packed with all the performance and features as ADAM, ZEUS offers a very cost-effective 24 ports in just 2 RU of space. Single circuit board construction provides the ultimate in rugged reliability. Front panel status LEDs for each port provide quick and easy confirmation of system operation. Enhanced audio design delivers in excess of 85 dB dynamic range, allowing ZEUS to be used in many audio routing and mixing applications.



ZEUS II

RTS ZEUS II provides all the features and performance of the original Zeus DSP intercom along with full support for RTS Intelligent Trunking. ZEUS II also comes equipped with dual redundant power supplies with independent AC inputs for fail-safe operation.



CRONUS

RTS™ Cronus is a 32-port digital matrix intercom in 2 RU (rack units). Based upon an advanced DSP architecture, Cronus™ has the ability to link up to a maximum of four units into a single 128-port matrix system. Through the use of standard video coaxial cable, the maximum distance between the first and last Cronus system can be up to 300ft. and still appear as a single matrix. However when using the Fiber Option card, the distance is increased up to 15 kilometers and function as a single matrix. When connected as a single matrix, the individual Cronus control remains autonomous and independent at each matrix for the highest reliability.

KP32 DSP Keypanel Series

The RTS KP32 FAMILY of user stations offers an unbeatable match of features, options, and performance. Now available in 4, 6, and 8 character models, RTS is the only intercom manufacturer to give YOU the choice of any or ALL of these standards. Features contemporary styling and extensive programmability for unprecedented function and performance. Each of the models is 2 RU high by less than 4 inches deep behind the rack. The KP32 family of DSP keypanels provide all the functionality of the KP-96 and KP-12 series, and add significant features such as DSP processing for mixing and audio control. Depending on the model selected, the keypanel may provide from 16 to 32 keys, with 4, 6, or 8 character alphanumeric displays on bright fluorescent or high contrast LCD backlit displays. All displays are dimmable, providing excellent visibility, whether in darkened control room, or broad daylight.

Features

- Extremely bright displays with adjustable brilliance
- Choice of 4, 6, or 8 character alphanumeric models
- Keys individually programmable for latch/non-latch operation, Talk/Listen, or ANY supported function
- Binaural audio with DSP control, allows assignment of intercom and external monitor audio in any combination to each ear.
- Integral numeric keypad for programming and telephone dialing access.
- Upgradeable; continuing enhancements can be downloaded into keypanel from Telex website.
- Optional RC/GPI connector kit provides 2 external audio inputs, relay and opto-isolated GPI, and ancillary audio connections.
- Intuitive cross-point level adjustments using master volume control and individual listen keys.
- All models available in Black or RTS Grey, with 4 or 5 pin headset connectors
- Optional built-in coaxial cable adapter perfect for remote use

KP32

The original 4 character alphanumeric panel with fluorescent display. Provides 30 individually assignable keys, along with numeric keypad and call waiting and programming windows.



Shown with optional MCP-90 microphone



KP32/16

All the functionality of the KP-32 with 14 individually assignable keys for simplified, lower cost option where 32 keys are not required.



KP632/24

The power and flexibility of the original KP-32 with enhanced contrast LCD display supporting 22 individually assignable keys with 6 character alphanumeric for increased naming options.



KP832/20

The power and flexibility of the original KP-32 with enhanced contrast LCD display supporting 18 individually assignable keys with 8 character alphanumerics for the ultimate in naming options.



EKP32

Expansion Keypanel for increasing the number of directly accessible keys at a given location. Model EKP-32 shown, available in 4, 6, or 8 character versions for KP-32, KP-632 and KP-832 keypanels.



LCP32/16

Level control panel providing direct "knob access" to individual cross-point level controls for operator convenience. Model LCP-32/16 (shown), available in 4, 6, or 8 character versions for KP-32, KP-632 and KP-832 keypanels and expansion panels.



RVON-1

delivers an integrated solution for connecting custom keypanels to the Intercom matrix over standard IP networks..The RVON-1 is compatible with any RTS™ Matrix Intercom system equipped with a suitable RVON interface (RVON-8 or RVON I/O). In conjunction with any new or existing KP-32 or KP-812 keypanel, the RVON-1 brings a new level of enterprise-wide and remote access functionality to your RTS™ Matrix Intercom.



KP32/RC

Rear panel connector option for KP-32, KP-632 and KP-832 models. Provides 2 auxiliary audio inputs, microphone pre-amp out, external speaker, opto-isolator and relay GPIs, and external headset connector. Can be supplied factory installed or field installed by the user.

KP12 Modular Keypanel Series

The RTS KP-12 Modular series of keypanels represents the ultimate in compact, fully programmable user stations. Based on a common set of internal modules (modules also available separately for custom designs) the KP-12 series have a common set of very powerful features, which make them attractive in mobile applications and in other situations where space is at a premium. Available in lever key versions and push button versions, the basic KP-12 provides a menu driven, fully programmable 12 key user station in a single rack unit of space. Expansion panels and level control panels round out the offerings in the rack mount form factor. Desktop and Tektronix® WFM 1/2 x 3 RU form factor units are also available.

Features

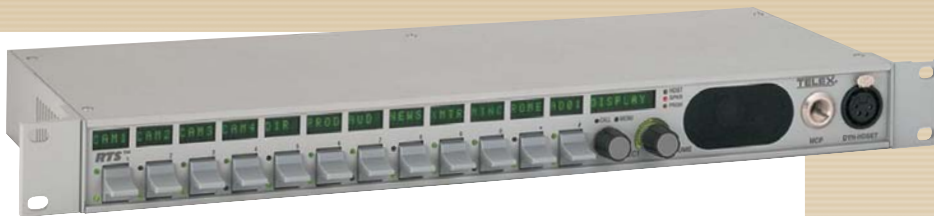
- Extremely long-life, high visibility green alphanumeric LEDS
- Fully programmable via pull down menus selected via front panel shaft encoder
- Lever key versions provide individual Talk/Listen functions on each key
- Push button versions provide individually assignable talk, listen or T/L function on each button
- All keys assignable for all functions (point to point, IFB, ISO, PL, SL, relay, GPI)
- Removable, optional gooseneck microphone
- Universal power supply for 100 – 240 VAC, 50/60 Hz operation
- Optional rear connector and GPI options available for rack mount panels
- Wide range of keypanels and expansion panels for specific applications

DKP8LK

DKP12PB

Desktop keypanel. Perfect for use on desks, console shelves, and remote locations available in 8 and 12 key versions, in both push button and lever key style. All units are fully programmable using pull down menus and shaft encoder. These units use optional MCP-90 series gooseneck microphones. Rear connector panel and GPI panel are NOT available for these models.





KP12LK

1 RU keypanel with 12 keys plus call waiting window with display. Perfect for installations where space is an issue. Only 5.5" deep (less connectors), allowing easy console mounting. Available with optional MCP-90 series gooseneck microphones. Available in both lever key and push button versions. Available rear panel options include GPI and rear connector panel.



EKP20LK

Expansion panels for KP-12 series of rack mount keypanels. Adds 20 keys to intercom station; up to 2 panels can be added per station, giving a total of 32 keys in 2 RU, or 52 keys in 3 RU. Available in push button and lever key versions.



LCP

Level Control Panels for KP-12 series of rack mount keypanels and EKP series of expansion panels. Available with 12 or 20 level controls in a single RU. Provide individual cross-point level adjustments, with corresponding level displayed on keypanel LEDs.



KP8T

8 position keypanel in Tektronix® WFM form factor (1/2 RU wide by 3 RU high). Includes mounting bezel and universal 100 – 240 VAC 50/60 Hz power supply. Same general specifications as the DKP series of panels. Perfect for Director, TD, and video consoles.

(Shown with optional MCP-90 microphone)

KP12 Kits

The extremely compact modular circuit boards used in the KP-12 line of products are available in kits including the circuit boards, interconnect wiring, switches, etc. for those applications where a custom enclosure or mounting is required. Please contact Telex for further technical information.



KPMCK & KPMI/O

The KPM-CK and KPMHO are rear panel option kits for the KP-12 series of rack mount keypanels. The KPM-CK option provides connections for external mic in, auxiliary line input, microphone pre-amp out, secondary headset connector, and external speaker jack. The KPMHO option provides 4 opto-isolated logic inputs, 2 open collector outputs, and 2 relay outputs. Status and control of GPI signals can be programmed and controlled from KP-12 or ADAM and ZEUS EDIT programs. These options are NOT available with KP-8T or DKP series of panels.



Value Keypanel Series

The RTS Value Keypanel Series are ideal where simplicity of operation and cost are of primary importance. The keypanels share a common set of features across the entire family. The alphanumeric call waiting window is used for scrollable access to all ports, PLs, ISOs, IFBs, etc. and to check and make key assignments. Keys may be assigned to any intercom function including talk, listen, talk/listen, relay, PL, ISO, IFB, and SL. All models use the optional RTS MCP-90 series gooseneck microphones. These keypanels are ideal for use with the RTS Zeus and ZEUS II intercom matrices, but (like all RTS Matrix keypanels) are compatible with all RTS matrices past and present, including the CS-9500, CS-9600, CS-9700, ADAM, and ADAM-CS.

Features

- Full scroll list access to all assignable communications
- Individual Talk/Listen function on each key
- RTS Digi-action for latch /non-latch operation
- High Brightness Alphanumeric LED for call waiting, scroll and key assignments
- Wide variety of form factors for ease of installation
- Full control of keys through ADAM-EDIT for latch disable, restrict, listen mode and other functions
- Supports both headset and speaker/mic operation
- MOST AFFORDABLE HIGH PERFORMANCE line of keypanels

MKP12

The top of the Value Series Line, the MKP-12 provides 12 fully programmable Talk/Listen keys, internal 4 watt speaker for clear communications, and universal power supply for operation from 100 – 240 VAC.





MKP4

The MKP-4 is the "baby brother" of the MKP-12, providing 4 fully programmable Talk/Listen keys and headset operation, the MKP-4 keypanel is perfect for installation tight on space or budget. In the RTS 1/2 rack format, the MKP-4 can be mounted along side any of the wide variety of RTS intercom accessories.

MCS325

Modular speaker for use with the MKP-4 keypanel. Available mounting options include the MCP-1 and MCP-4 for side by side or stacked mounting.

BKP4

The BKP-4 is ideal for desktop use or in any application where portability is important. The unit includes built-in speaker and is housed in an extremely rugged aluminum enclosure. Power is provided by a built-in universal power supply for operation from 100 – 240 VAC.



WKP4

The WKP-4 is designed for wall mounted applications. Perfect for use in commercial sound and industrial settings, the WKP-4 is compatible with the Telex U series flush mount box. Flush mounting into consoles, custom enclosures and walls is a snap. The least expensive of the value series keypanels, the WKP-4 requires 15 – 24 VDC at 1 Amp



WKP-1

The WKP-1 keypanel is the industrial keypanel from Telex. Telex has refined the look of multi-location security with this keypanel. It offers simplified operation and integrates seamlessly with RTS™ digital intercom systems (RTS™ Adam™/Zeus™ intercom systems). The physical size and weather-resistant design provides a flexible and robust intercom system. The GPI relay switch lets the user set up door latching, unlatching and other related actions by pressing a single button from any panel in the system.

TKP4

The TKP-4 is ideal for installation in broadcast facilities, owing to its 1/2 x 3 RU form factor, compatible with Tektronix® and other WFM/Vectorscope products. Provided with a pressure fit front bezel and universal 100 – 240 VAC power supply, the unit is perfect for TD consoles, equipment racks, camera control positions, anywhere an empty "slot" is available in a WFM rack assembly.

UBox (not shown)

The U-Box is used for wall mounting speaker stations. The U-Box mounts to studs and has top/bottom (depending on mounting orientation) and side access holes for permanent installations. Intercom cabling connects directly to the terminals on the back of the speaker station.



TM2000 Trunk Master

What is "RTS Intelligent Trunking"? It's no less than your own private version of the long distance telephone system, allowing users of 2 or more (up to 31) separate matrices to instantaneously, seamlessly communicate with one another with all the same presets, scroll lists, and tallies available on local matrices. Whether the systems are located in adjacent studios or continents away from one another, Intelligent Trunking brings all your communications together.

Features

- Available in redundant configurations with automatic changeover and alarms
- Compatible with all RTS matrix families (including Zeus II model of Zeus)
- Supports ANY methodology of audio and data Trunking including:
 - LAN, WAN, VPN
 - ISDN, ATM
 - Fiber Optics, Twisted Pair, Coax
 - Terrestrial and Satellite RF Paths
- Configuration Software runs under all versions of Windows® 95 and newer
- Matrix cascading to automatically find multi-hop paths when direct paths are unavailable



The RTS TM-2000 is the second generation of Intelligent Trunking controllers from Telex. Since 1994, RTS Intelligent Trunking has been the worldwide standard, providing the most advanced control of multiple communications systems, allowing them to operate as a single unified system. The TM-2000 Trunk Master is unmatched in providing configuration, control and management of trunks, whether over copper, fiber, data networks, or RF paths.

Compatible "all the way back" to RTS/McCurdy 9000 series matrices, the TM-2000 works with ADAM, ADAM-CS and ZEUS II matrices from RTS.

The included Trunk Edit software provides the system administrator the EASY ability to assign trunk priorities, restrict access to individual trunks, and in conjunction with ADAM-EDIT software on the matrices to individually by user restrict access to remote matrices.

RTS Trunk Supervisor software is available, which provides a detailed graphical representation of trunk utilization in an intuitive map format reminiscent of the giant map walls used by long distance carriers to map long distance traffic and network status. The Trunk Supervisor can be configured to generate specific alarms, email messages, or pager messages to alert key operators when signal paths need attention.

RTS Matrix Accessories

A full line of products to complete your communications SYSTEM, including interfaces to party-line intercoms, coaxial cable, telephone lines, and relays. Accessories also include control panels for IFB levels and assignments, panels for adjusting system audio levels, microphones and 4 wire belt packs.



1 MCP90 Series

Gooseneck Microphone designed and manufactured by Electro-Voice, and compatible with RTS Matrix and TW Intercom products, the MCP-90 series of microphones provide superior vocal response. Shown in lengths of 8", 12", and 18"; 3" stub also available.

2 TIF2000

Single channel **Intelligent Telephone Interface** allows incoming and outgoing telephone calls from ADAM and Zeus matrices. Provides full programmable routing of telephone communications, password protection, and the highest quality digital hybrid for exceptional audio nulling and quality.

3 CSI200

Two channel **Coax Cable Interface** for matrix-keypanel interconnect. Works with the KP-32 series of panels using the optional plug in card; can also be used in matching pairs with other keypanels. Adapts the RTS standard 3 pair interconnect to a single 75 ohm coax.

4 SSA424

The SSA-424 **Digital Hybrid** provides 2 independent channels of 2 wire (TW) to 4 wire hybrid in a 1/2 rack wide by 1 RU package. The TW interface is suitable for balanced and unbalanced systems, allowing RTS Matrix systems to interface to virtually ANY party-line intercom system in use today. Easy to read front panel level meters make matching audio levels simple, and the RTS advanced DSP hybrid eliminates all need for manual nulling, even under varying loads. A call signal option is available, which encodes and decodes TW call signals that can be used to interface matrix GPI circuits.

5 SSA324

The SSA-324 **Analog Hybrid** provides 2 independent channels of 2 wire (TW) to 4 wire hybrids in a 1/2 rack wide by 1 RU package. The TW interface is suitable for balanced and unbalanced systems, allowing RTS party line systems to interface to virtually ANY party-line intercom system in use today. Features system to system level, duck and null adjusts with front panel headset connector for use during setup. Option card allows translation of call lights and two-way radio interfacing.



6 LCP102

The LCP-102 is a Multi-Function Panel for matrix systems. It can be switched via front panel control to any one of three functions. In "TRIMS" mode, it can be used to adjust any input or output audio levels for the matrix. In "PAP" mode, you can select any input source for an IFB and adjust the level of the source for each of the IFBs. In the "CDP" mode, you can make assignments to party-lines and adjust listen levels for any party-line member. In all modes, the bright LED displays provide full details on the action being performed. Selection and adjustment are made using shaft encoders.

7 BP300FW

4 Wire Belt-pack matrix compatible version of the venerable RTS BP-300 belt-pack. Headset user station without need for separate hybrid. Takes external power either via XLR connector for audio and power or separate connector.

8 IFB828

IFB Level Controller provides power, matrix interface and easy audio level control for 8 channels of IFB. Compatible with RTS IFB-325, IFB-4020 and IFB-4030 belt-packs.

9 PAP32

Program Assign Panel provides quick direct access to change program sources assigned to IFBs. Panel can access all sources and destinations, and display any 16 at one time. EKP panels can be used to increase sources and destinations.

1.0 UIO256

General Purpose Interface provides 16 GPI inputs and outputs that can be programmed from ADAM-EDIT or ZEUS-EDIT to control virtually any intercom function, or to activate any external function based on a wide range of programmable parameters. Inputs are opto-isolated logic levels, outputs are DPDT relays. Up to 16 UIO-256 units can be connected to a single matrix, providing over 250 logic inputs and outputs. Front panel LEDs indicate real-time status of all inputs and outputs.

1.1 MCP1

Mounting Bracket for 2 main (modular style) components. Comes with 1/4" to 1/4" link cable.

1.2 MCP2

Mounting Bracket for 1 main (modular style) component.

1.3 MCP4

Mounting Bracket for 2 main (modular style) tandem components. Comes with 1/4" to 1/4" link cable.

For information

*on any of the products shown
in this catalog please visit
our web site at*

www.rtsintercoms.com

or contact us at:



Americas

Telex Communications Inc.

12000 Portland Ave South,
Burnsville, MN 55337, USA

USA—Phone: 1-877-863-4169, Fax: 1-800-323-0498

Canada—Phone: 1-866-505-5551, Fax: 1-866-336-8467

Latin America—Phone: 1-952-887-5532, Fax: 1-952-736-4212

Europe, Africa & Middle-East

EVI Audio GmbH.

Hirschberger Ring 45, D 94315,
Straubing, Germany

Phone: +49 9421-706 0, Fax: +49 9421-706 265

UK: Telex Communications (U.K.), Ltd.,

Unit 26 Fiddlebridge Industrial Center,

Lemsford Road Hatfield, Hertfordshire AL10 0DE, UK

Phone: +44 1707 280 960, Fax: +44 1707 265 083

Asia & Pacific Rim

Japan: EVI Audio Japan Ltd.

5-3-8 Funabashi, Setagaya-Ku,

Tokyo, Japan 156-0055

Phone: +81 3-5316-5020, Fax: +81 3-5316-5031

China: EVI Audio Ltd.

Room 2210-2215, Tower B, Far East International

Plaza, No. 317, Xianxia Road,

Shanghai, China, Post Code: 200051

Phone: +86 (21) 6235-1677, Fax: +86 (21) 6235-1676

Hong Kong: EVI Audio (HK) Ltd.

7th Floor China Minmetals Tower,

No. 79 Chatham Road South,

Tsim Sha Tsui, Kowloon, HK

Phone: +852 2351-3628, Fax: +852 2351-3329

Singapore: Telex Pte. Ltd.

3015A Ubi Road 1, 05-10

Kampong Ubi Industrial Estate, Singapore 408705

Phone: +65 6746-8760, Fax: +65 6746-1206

RadioCom™

Telex offers the widest variety of Professional Wireless Intercoms in the industry. From entry level fixed frequency VHF units to the state-of-the-art BTR-800 UHF frequency agile system, Telex has a wireless intercom product for any need.

In conjunction with RTS Matrix products, Telex wireless intercoms can provide the ultimate in assignable flexibility where being tethered by a cable is not desirable.

Telex offers a full range of antennas, battery chargers, splitter combiners and other accessories. See the full line RadioCom catalog for more information.

Features

- Full Duplex hands free operation
- Compatible with RTS TW and Matrix Hardwire Intercoms
- Wide Band Low Noise Analog Circuitry (except BTR-600 Encrypted Intercom)
- Uses readily available Alkaline or NiMH AA batteries
- Rugged Metal Beltpacks (Hi impact Polycarbonate on TR-300)
- Support for "stacking" multiple systems for additional beltpacks
- Half Duplex Option for sharing single channel between multiple beltpacks (perfect for users that primarily listen)
- Telex Staff Engineers provide full frequency coordination services