



**JLCooper Electronics**

PRODUCT CATALOG 6.0



# Control Stations

JLCooper's Control Station technology is being used industry wide in recording, video post, and multimedia production. Adobe Systems, Avid, Dalet, Data Translation, Emagic, Editing Technologies, Merging Technologies, Radius, SADiE, Sonic Solutions, Soundscape, Spectral, Strassner, Sundance, TAO, and many others look to JLCooper for their control interfaces.

## CS-10<sup>2</sup> PROFESSIONAL CONTROL STATION

The CS-10<sup>2</sup> Professional Control Station™ is engineered to be the definitive control surface for Digidesign's Pro Tools, Spectral's Synth-Engine and Audio Prisma, SADiE, SoundScape, Sonic Solutions and other digital audio and video workstations.

Musicians, video and film professionals, audio post production and broadcast facilities will love the CS-10<sup>2</sup>'s easy-to-use control interface. It provides complete access to transport, automation and digital signal processing functions without tedious mouse and key commands.

The CS-10<sup>2</sup> features conventional controls that look and feel like a tape recorder transport. With large buttons for Record, Play, Stop, Fast Forward and Rewind, you can concentrate on your project, not on your computer keyboard.

The optically encoded jog/shuttle wheel offers precise positioning and effortless scrub editing. You can initiate complex commands with a single button using the CS-10<sup>2</sup>'s function keys. The footswitch input permits hands-free operation.

The CS-10<sup>2</sup> also features eight, smooth tracking, 100mm, long throw faders to control automation functions. Six rotary potentiometers provide convenient access to digital signal processing functions.



### CS-10<sup>2</sup> CONTROL STATION FEATURES

- Professional Tape Recorder Style Controls
- Six Rotary Potentiometers
- Eight 100mm Long Throw Faders
- Footswitch Input for Hands-free Operation
- Null LED Indicators, Digital LED Display
- Optically-Encoded Jog/Shuttle Wheel
- Jet Black Color, Ergonomic Design
- Full 1 Year Warranty
- Optional CS-Edit for Complete Programmability

## CS-EDIT CS-10<sup>2</sup> PROGRAMMING SYSTEM

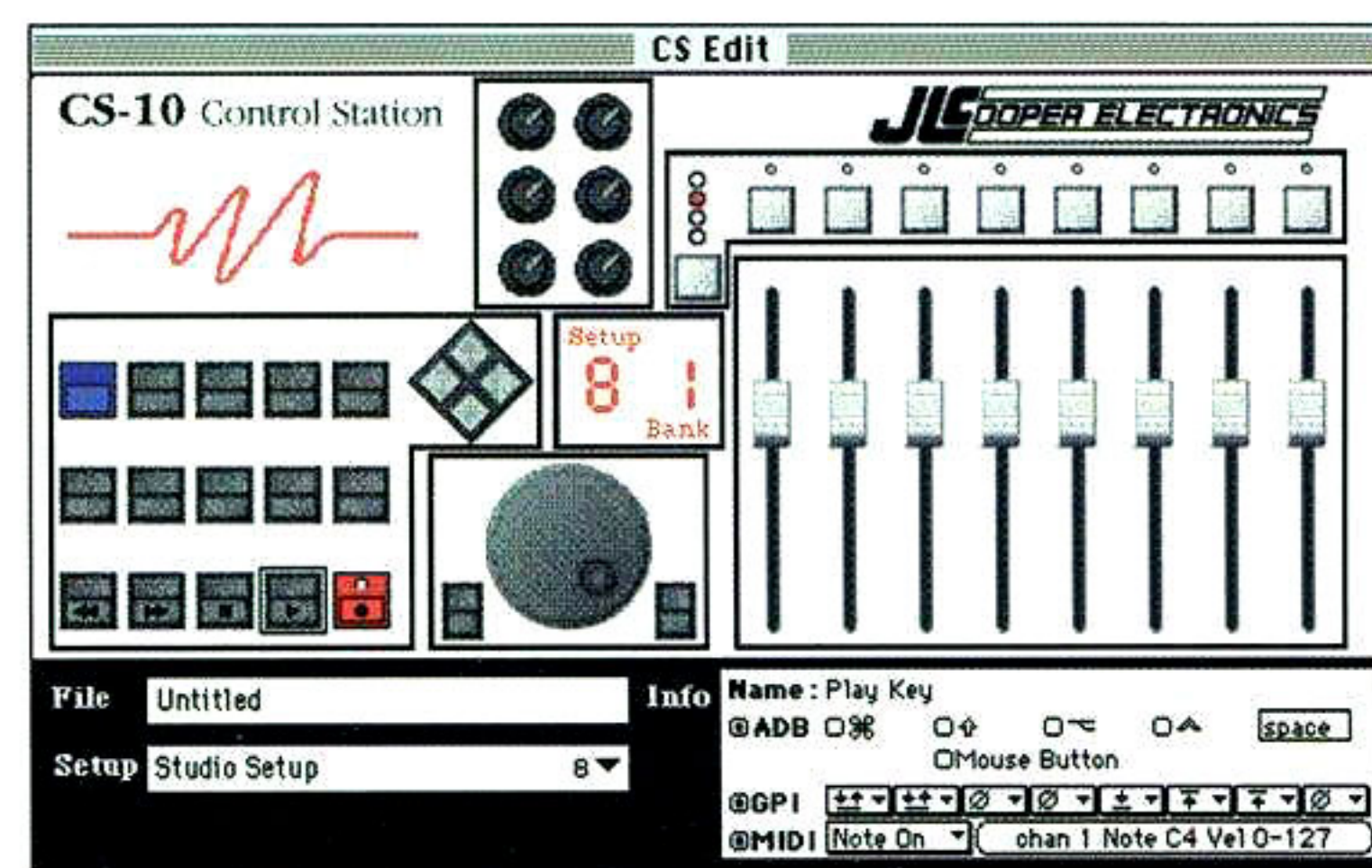
CS-Edit™ turns the CS-10 or CS-10<sup>2</sup> into a completely programmable studio and stage control station. MIDI, ADB (Apple Desktop Bus), and GPI (General Purpose Interface) compatible devices can be controlled simultaneously, in any combination using CS-Edit.

Imagine... sliding a fader changes the volume of a digital sampler, while turning the wheel scrolls through a Macintosh QuickTime movie. Pushing a button starts a video tape recorder and initiates a laser firing sequence.

CS-Edit consists of a 1/4 width, single rack space module with 2 MIDI Inputs, 1 MIDI Output, 2 ADB, and GPI (9 Pin D-Sub) connectors. The CS-Edit software features JLCooper's easy-to-use, intuitive user interface.

Eight memory setups and 99 banks let you control your entire system right from the CS-10<sup>2</sup> Control Station. It also gives CS-10<sup>2</sup> all of the JLCooper FaderMaster factory presets for editing synthesizers and digital effects.

Supporting MIDI Machine Control and MIDI Show Control, CS-Edit gives you the power to coordinate many different kinds of equipment. GPI permits the CS-10<sup>2</sup> to activate remote controlled or footswitch operated equipment including tape recorders, slide projectors and more.



### CS-EDIT FEATURES

- Makes the CS-10 and CS-10<sup>2</sup> a programmable MIDI, ADB (Apple Desktop Bus) and GPI (General Purpose Interface) device
- Adds 99 Memory Banks
- Sends MMC, Controls Alesis ADAT, Tascam's DA-88, Fostex RD-8 and Others
- Includes all FaderMaster Factory Presets
- Includes Hardware Remapper Module, Software and Cables
- Control VCR's, VTR's, ATR's, Slide Projectors, etc. with GPI
- The Perfect Complement to your CS-10<sup>2</sup>



## MCS MEDIA CONTROL STATION

The Media Control Station™ provides cost effective control for music sequencers, digital audio workstations, computer-based video editing systems, animation and multimedia presentation systems.

### Ready to Go

MCS is ready to go right out of the box with presets for Adobe Premiere™, Data Translation Media 100™, and other digital video production software. The supplied software allows you to create your own memory presets for virtually any Macintosh application. Large buttons for Record, Play, Stop, Fast Forward and Rewind provide



vide a conventional tape recorder style interface. A precision, optically encoded jog/shuttle wheel can be used to precisely scroll thru QuickTime™ video frames, audio or MIDI files.



"Invaluable"

### MEDIA CONTROL STATION FEATURES

- Adds Professional Style Transport Controls
- Works With All Music, Audio, Video and Multimedia Software
- Smooth, Balanced, Optically Encoded Jog/Shuttle Wheel
- Dual ADB (Apple Desktop Bus) Ports
- Memory Presets Included for Popular Software Applications
- 19 Key Combinations per Memory Preset
- MCS 2.0 Software is Included for Creating Your Own Presets\*
- User Programmable, Assign Any Key Command to Any Button\*
- QuickTime™ Compatible
- Durable All Metal Construction
- Also Available:
  - MCS MIDI - Now with MMC
  - MCS RS-232
  - MCS - 9PIN

\* Indicates Mac Version

### Works With All Macintosh Programs

You can use MCS to add convenient controls to other programs, and its low price makes it a time saving addition for multimedia applications like HyperCard, Macromind Director and many others. Media Control Station for Macintosh offers dual ADB ports and requires no external power supply.

Take control of your next project with Media Control Station.

## CS-1 CONTROL STATION

Mice are handy for word processing or general use. For precision audio, video and MIDI editing you need an input device that lets you concentrate on your project, not on your computer.

The CS-1 Control Station™ is an easy-to-use mouse replacement for hard disk-based recording systems and MIDI sequencers. The CS-1 features conventional controls that look and feel like a tape recorder transport, with large buttons for Record, Play, Stop, Fast Forward and Rewind. A footswitch input permits hands-free operation, and the smooth, optically encoded jog/shuttle wheel provides precise positioning and effortless "scrub" editing.

### The CS-1 with Disk-Based Recorders

The CS-1 functions as an integrated component with Digidesign's Sound Tools and Session 8, and makes recording and editing fast and easy.

### The CS-1 with Sequencers

It can be used to control Opcode's Studio Vision, Mark of the Unicorn's Digital Performer, Passport's Pro5, Emagic's Logic Audio, Steinberg's Cuebase Audio and other popular sequencing programs.

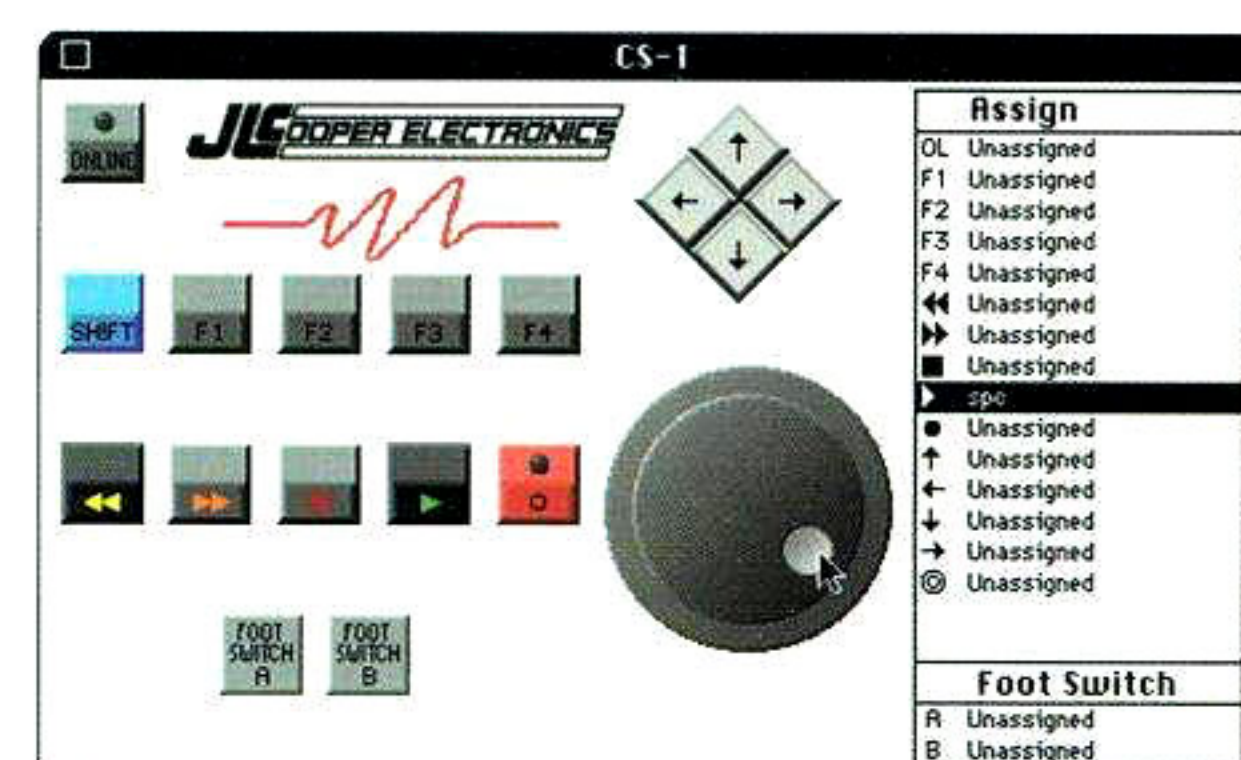
### The CS-1 as a Universal Controller

The CS-1 can control desktop video, multimedia and animation software, too. The new 2.0 update for Macintosh lets you program all wheel and key commands to make the CS-1 work with any program.

### The CS-1 2.0 Remote Software\*

The CS-1 Remote Editor/Librarian software for the Macintosh (included) allows you to create custom presets that you can save to disk. You can program the CS-1 to trigger any keyboard or mouse command. It lets you create a person-

alized control station for any Macintosh software program.



### CS-1 FEATURES

- Convenient Control for Disk-Based Recording/Editing Systems
- Adds Professional Tape Recorder Style Controls to any Software
- Programmable Footswitch Input
- Works with Music, Video, and Multimedia Software
- Dual ADB ports\*
- 28 Different Switch Combinations
- Also Available:
  - CS-1 MIDI - Now with MMC
  - CS-1 RS-232
  - CS-1 9-PIN

\* Indicates Mac Version





# MIDI Automation

Never before have we had access to MIDI and digital audio products with so many features, and such limited hands-on control. JLCopper puts you back in control with FaderMaster and FaderMaster Professional. Powerful, easy to use controllers/programmers/editors/mixers for anything MIDI.

## FADERMASTER MIDI COMMAND CONTROLLER

### FaderMaster and the MIDI Sequencer

Imagine how much faster and more effectively you'll be able to mix MIDI Volume and stereo panning on your sequenced tracks using eight faders at a time. FaderMaster™ will eliminate the aggravation of using a mouse to mix the volume of sequenced tracks. And that's not all, if you need to punch in to change a passage, FaderMaster's intelligent design permits seamless re-recording of continuous data. FaderMaster is your automated MIDI mixdown system!

### FaderMaster and the Digital Effects Processor

Did you ever wish you could alter parameters on your Reverb, Digital Delay or EQ during mixdown? Simply hook up FaderMaster to virtually any MIDI effects processor and use the faders to control any parameter in real time. Sequencer users can even record parameter changes for automated effect control. Using a fader to control these functions eliminates the inconvenience of scrolling through sub-pages to get to the parameter you wish to edit.

### FaderMaster and the Synthesizer

Everyone knows how tricky programming today's synthesizers can be. Page after sub-page, the entire process can be tedious, to say the least! Use FaderMaster to program, edit or manipulate parameters on synthesizers and tone modules. Whether it's quick convenient access to the Attack, Release, and Filter settings, or simply Volume or Program Changes, FaderMaster brings all this control directly to your fingertips!

### MIDI Clock and Note Delay

FaderMaster can be programmed to delay both MIDI Clocks and MIDI note data up to 15 milliseconds. Any MIDI note can be assigned to any fader. This clever feature was added to create that "human feel" by delaying MIDI note data (e.g. MIDI drum notes) on your sequencer or drum machine. You can also delay the MIDI clock data to create an overall "feel". Again, all of this can be done using faders in real time.

### Factory Presets

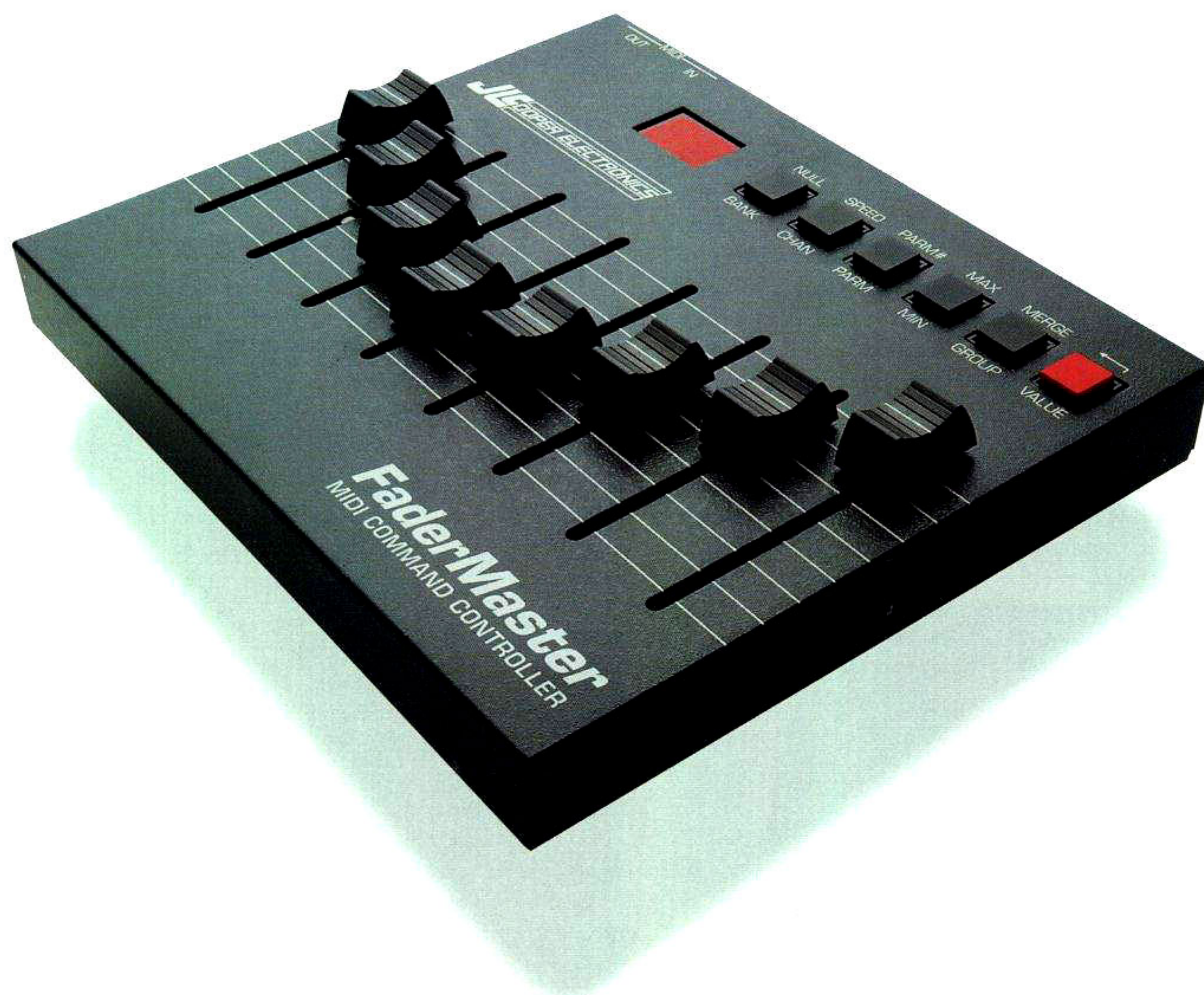
FaderMaster includes 60 memory presets for controlling synthesizers from Korg, Kawai, Roland, Emu, Yamaha, Ensoniq and others. We've also included presets for effects from ART and Lexicon. And defining setups of your own couldn't be easier. FaderMaster has 10 programmable memory banks for creating your own setups.

### Programming FaderMaster

Each Fader may be individually programmed to send MIDI Volume, Pitch Bend, Aftertouch, Program Change, Notes and Controllers. In addition, each fader may be programmed for Channel Number, Maximum Value and Minimum Value. You can also select Rate of Data (Fader may be scanned from 6 to 100 times per second to adjust the density of MIDI data), and Group Assignment.

### Optional FaderMaster Remote Software

Software programs have been developed for the Macintosh, Windows and Atari ST for programming and storage of your setups.



	1	2	3	4	5	6	7	8
Ctrl	Ctrl	Ctrl	Ctrl	Ctrl	Ctrl	Ctrl	Pgm	PBend
Chan	1	1	1	1	1	1	2	2
Param	0	1	2	3	4	5		
Min	0	0	0	0	0	0	0	0
Max	127	127	127	127	127	127	127	127
Speed	1	1	1	1	1	1	1	1
Group	0	0	0	0	0	0	0	0
Merge	On	On	On	On	On	On	Off	Off

The affordable FaderMaster is ideal for both live and studio applications. The possible uses are endless.

### FADERMASTER FEATURES

- Eight Programmable MIDI Faders
- Scan Speed, Range, Grouping, and MIDI Channel Selectable Per Fader
- All MIDI Parameters are Fully Programmable
- 60 Ready-to-Use Factory Preset Banks
- Lithium Battery-Backed RAM Memory
- MIDI In and Out With Programmable Echo Thru
- Ideal for Use with MIDI Software, Sequencers, Synthesizers and Effects
- Optional FaderMaster Remote Software for Macintosh, Windows and Atari ST



## FADERMASTER PROFESSIONAL MIDI AUTOMATION CONTROLLER

FaderMaster Professional™ is engineered for the audio professional involved with MIDI-based automation or digital audio recording. Building on the success of the original FaderMaster, FaderMaster Pro is the next generation universal MIDI controller. Like the original FaderMaster, you can easily control, mix and edit with MIDI sequencers, hard disk recorders, MIDI-controlled mixers, synths, samplers, and signal processors.



FaderMaster Pro features high-quality 100mm long-throw faders. These smooth tracking faders give you more control and a more professional feel to your mix.

FaderMaster Pro has 20 completely programmable banks for storing controller setups, effects editing configurations, custom SysEx data and more. Plus, FaderMaster Pro has all of FaderMaster's Factory Presets for controlling Synths and Signal Processors.

Programmable buttons can be used for muting, sample triggering, program changes, and more.

FaderMaster Pro also features two external inputs allowing MIDI data to be sent from a foot pedal or foot switch.

**Optional FaderMaster Pro Remote Software**  
Software is available for Macintosh and Windows that allows you to edit and store your FaderMaster Pro setups. It also directly learns SysEx making set-up a breeze.

### FADERMASTER PRO FEATURES

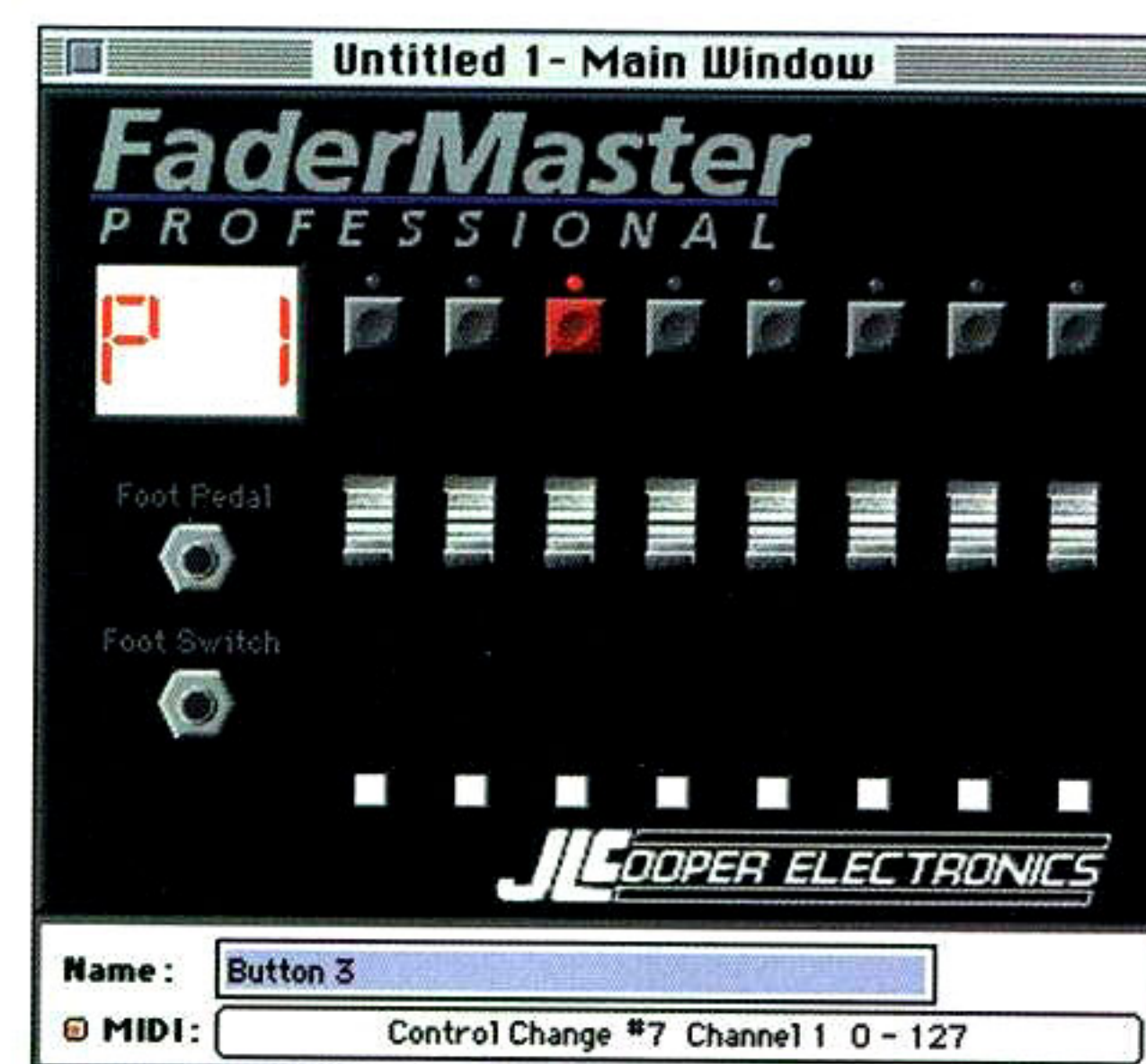
- Eight Programmable High-Quality 100mm Faders
- Eight Programmable MIDI Buttons
- 20 User-Programmable Banks
- Multiple Units can be Linked Together
- Controls JCooper MixMaster
- Lithium Battery Backed RAM
- More than 50 Factory Presets

### Professional Automated Mixdown System

FaderMaster Pro gives you the total, hands-on control you've been missing from your digital audio or MIDI system.

FaderMaster Pro eliminates the aggravation encountered when using a mouse to mix or edit the volume of multiple tracks. And FaderMaster Pro is fully programmable, allowing you to control volume, panning, EQ, digital effects, and other parameters.

And if eight faders and buttons are not enough, multiple FaderMaster Professional units can be coupled to form a larger console.



## MIXMASTER MIDI CONTROLLED MIXER

MixMaster™ interfaces with any audio console to provide affordable audio automation. It works with sequencers and MIDI fader units, like our FaderMasters. It's compatible with Digital Performer, Studio Vision, Logic Audio, Cubase Audio, Cakewalk Pro, Pro5 and other sequencers that provide on-screen faders.

MixMaster employs professional quality audio circuitry. It is a single rack space unit with 8 unbalanced VCA inputs and outputs, a mix output and a stereo mix input. As a complement to an existing console, it's easily patched into the insert points with common 1/4" patch cables.

A convenient "Learn" button makes MIDI setup easy. Parameters are saved in non volatile memory. MixMaster can also be used as a stand alone 8 x 1 or dual 4 x 2 line mixer. Multiple units can be cascaded to form a larger system.

### MIXMASTER FEATURES

- Professional Quality Audio
- Activity LED Indicates MIDI Input
- Fast Response to MIDI Controllers
- No Zipper Noise
- Expands Easily by Adding Additional Units
- S/N: -92dB (30kHz bandwidth, unweighted)
- Attenuation: -87dB
- THD: Less than .01% unweighted
- Frequency Response: 20Hz-30kHz
- Dynamic Range: Better than 106 dB

*"...a major contender in the home/project studio market."*

**- Electronic Musician**





# Synchronizers

JLCooper Electronics was one of the developers of the MIDI Time Code standard. In 1987 we designed and manufactured the first hardware that supported MTC. JLCooper continues to engineer the most reliable, affordable and innovative solutions to solve the complex synchronization challenges in today's studio.

## PPS-2 SYNCHRONIZER

JLCooper's PPS-2™ is ideal for anyone who owns a sequencer, drum machine, workstation, or hard disk recording system, and needs to sync to tape.

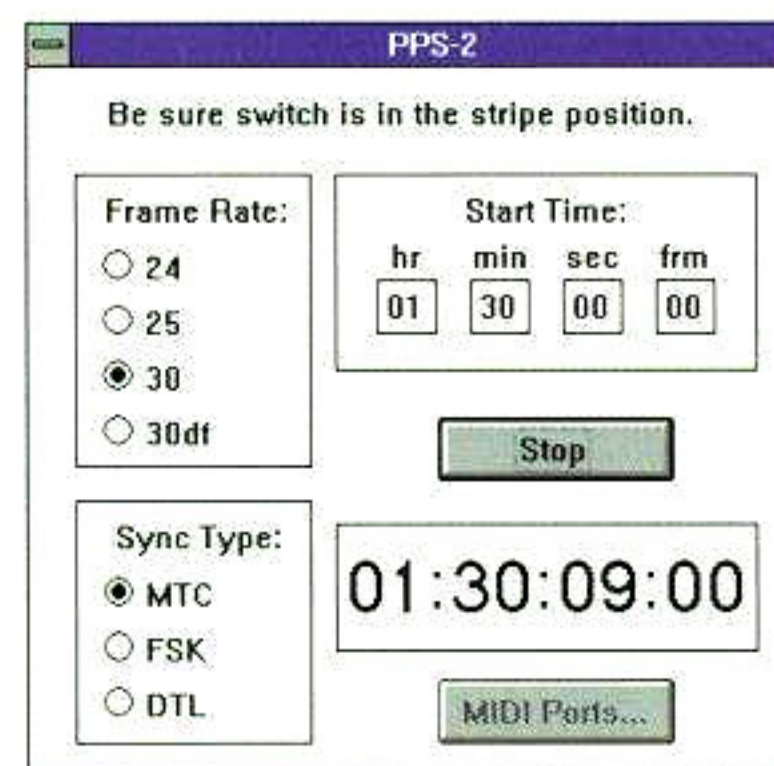
PPS-2 offers the advantages of several synchronizers in one versatile package. It reads and generates SMPTE time code and converts SMPTE into MIDI Time Code or Direct Time Lock. It also reads and generates JLCooper's "Smart FSK" sync and converts it into MIDI Clock with Song Position Pointer. Jam Sync/Regeneration, Flywheeling, Auto-Merge and a low price make the PPS-2 the best choice for an affordable synchronizer.



### PPS-2 Plus Option

The revolutionary PPS-2 Plus enhancement adds the ability to read MIDI Time Code (MTC) from any source and convert it to SMPTE time code. This option is user-installable and lets your digital audio workstation control machine synchronizers, automation systems and other SMPTE driven devices.

Optional PPS-2 remote software lets you set SMPTE frame rate and start time when striping.



### PPS-2 FEATURES

- SMPTE and FSK Modes
- SMPTE Jam Sync/Regeneration
- 1 MIDI In and 1 MIDI Out
- Auto-Merge
- Easy to Use
- SMPTE Stripe can be Started at any Time.
- SMPTE Stripe Format can be Changed to 24, 25, 30 and 30 Drop Frame.
- Plus Option for MTC to SMPTE Conversion
- Optional PPS-2 Remote Software for Macintosh, Windows and Atari ST

*"The world's best selling SMPTE/MIDI synchronizer"*

## PPS-100 SYNCHRONIZER/EVENT GENERATOR

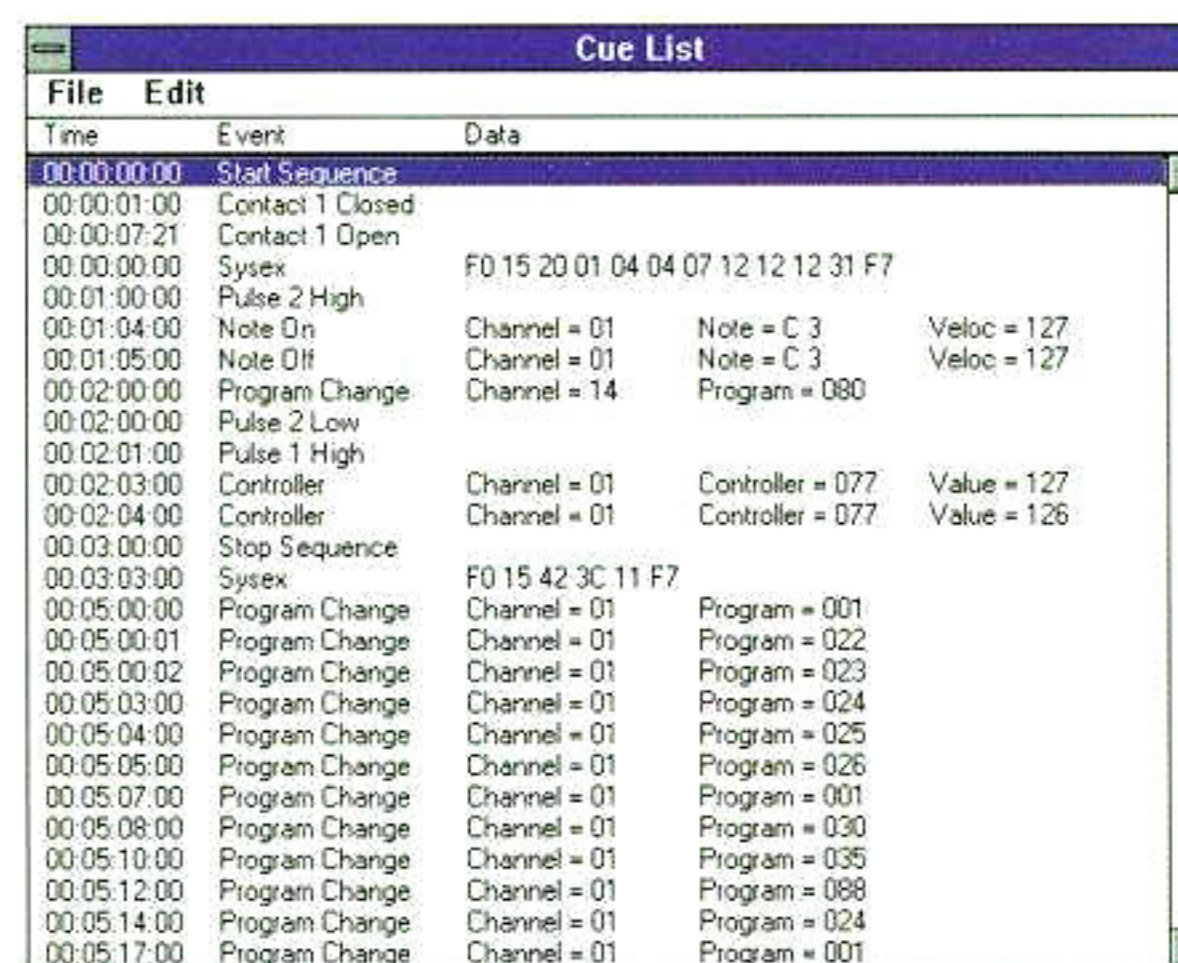
With the increasing demand for SMPTE control of MIDI devices, the need to link these technologies has never been greater. The PPS-100™ does it all! The PPS-100 locks MIDI Sequencers and Drum Machines to SMPTE using MIDI Clock with Song Position Pointer, MTC and Direct Time Lock. It lets you creatively use SMPTE to bring a new dimension of control to your studio.

PPS-100's Event Generator can be programmed to send out any type of MIDI command. It can trigger MIDI devices with Notes, Program Changes, Controllers or System Exclusive commands. The Event Generator can also turn on and off switch and pulse operated equipment at any time. Examples include automated punch-in/out using your tape recorders remote footswitch jack. Up to 1,000 events can be programmed.

### PPS-100Q Software for Macintosh, Windows and Atari ST Computers.

Program allows Tempo Maps and Events to be

entered on computer in the form of a "cue list" and then downloaded to the PPS-100. Alternately, the PPS-100 memory can be uploaded into the computer for more convenient display, modification and storage.



### PPS-100 SYNCHRONIZER FEATURES

- Reads/Generates SMPTE Time Code (30, 30 drop, 29.97, 25 and 24 fps)
- SMPTE to MIDI Clock with Song Position Pointer with Programmable Tempo Changes and Time Signatures
- SMPTE to MIDI Time Code (MTC)
- SMPTE to Direct Time Lock, for Mark of the Unicorn's Performer™
- While converting SMPTE to MIDI Sync, the PPS-100 can also Generate PPQN at 24, 48 or 96 Pulses per Quarter Note and Roland DIN Sync
- LCD Displays and Holds Last SMPTE Time When Timecode is Stopped

### PPS-100 EVENT GENERATOR FEATURES

- Two Independent Relay "Contact" Outputs
- Two Independent 5-Volt Momentary Pulse Outputs
- Supports MIDI Notes, Controllers, Program Change, After-Touch, Pitch Bend and System Exclusive Events
- Controls Keyboards, Samplers, etc.
- Automated Setup of MIDI Reverbs, Delays and Effects
- Real Time Recording Permits Loading from Another MIDI Source





## DATA SYNC<sup>2</sup> MIDI SYNCHRONIZER FOR THE ALESIS ADAT

JLCooper improves on the successful dataSYNC with dataSYNC<sup>2</sup>, the ADAT MIDI SMPTE synchronizer.

The new dataSYNC<sup>2</sup> connects right to your ADAT and provides time code to drive sequencers and digital workstations. Without wasting a valuable tape track for SMPTE.

dataSYNC<sup>2</sup> improves on the original dataSYNC and it's need for the dataSYNC Plus Option.

As a standard function, it now includes the ability to send MIDI Clock with Song Position Pointer, for hardware sequencers, workstation



*"A brilliant addition for the ADAT a gotta-have-it" - Roger Nichols, EQ*

### DATA SYNC<sup>2</sup> FEATURES

- Sends MIDI Time Code, SMPTE Time Code, MIDI Clock with SPP
- No Wasted Tracks for Sync
- Easily Accessible Front Panel Controls
- Battery Backed Memory Stores Variable Tempo and Meter Information
- Initiate System Exclusive Memory Dump from the Front Panel
- Additional Merging MIDI Input for Added Flexibility
- Two 9-Pin Sync Cables Included
- Complete MIDI Machine Control Implementation

## DATAMASTER PROFESSIONAL SYNCHRONIZER FOR THE ALESIS ADAT

dataMaster™, is a professional synchronizer for the popular Alesis ADAT. It allows ADAT to sync to SMPTE time code. With the inclusion of MIDI Machine Control, dataMaster provides unprecedented integration of ADAT's digital audio into virtually any professional audio/video application. Because, no matter how good one piece of equipment is, it must co-exist with the rest of your studio.



### A Wide Variety of MIDI and SMPTE Synchronization Functions

The dataMaster provides maximum flexibility by connecting ADAT to other devices in your studio. This is accomplished by providing numerous methods of bi-directional synchronization. dataMaster can produce MIDI Time Code from ADAT's internal sample clock. This allows ADAT to sync and autolocate a MIDI sequencer running on an external computer; and accomplishes this without wasting an audio track. Conversely, with dataMaster, ADAT can be directly controlled from a MIDI sequencer via MIDI Time Code. Jump to a new measure on your sequencer and ADAT's digital audio tracks will jump with you. Whatever your MTC compatible application, dataMaster provides seamless integration of digital audio into your MIDI system.

The dataMaster works with SMPTE as well, by allowing ADAT to be sync'ed to SMPTE coming

keyboards and drum machines. Complete variable tempo and meter data is sent without the restrictions of other products.

Now with bi-directional MIDI communication to the ADAT, you can use MIDI Machine Control to address ADAT's transport, track enable and locate functions, right from your computer.

A merging MIDI input lets you record new MIDI tracks while sync'ed to ADAT sample clock.

### DATAMASTER FEATURES

- Sync ADAT via SMPTE
- Sync ADAT to Analog Recorders
- Does not Waste an Audio Track
- SMPTE Reader/Generator w/ Flywheeling
- Translates ADAT's Control Functions to/from MIDI Machine Control
- User-Selectable Offset Times
- Chase and Park
- Easy-to-read Backlit LCD Display with Contrast Control
- CuePoint Compatible
- MIDI Merging
- Single 19" Rack Space
- Full One-Year Warranty

from a multi-track tape or video recorder. Finally you can easily integrate digital audio tracks into your current analog tape-based system. The dataMaster supports SMPTE frame rates of 24, 25, 30, 30 drop, 29.97, and 29.97 drop. In addition, dataMaster has the unique ability to translate ADAT's sync track into SMPTE.

### MIDI Machine Control

MIDI Machine Control (MMC) allows ADAT's control functions, such as Play, Fast Forward, Pause, Rewind, etc. to be translated to/from MMC. Now ADAT can sync to and from virtually all time-based devices in your studio.

An MMC-equipped MIDI sequencer or JLCooper's CuePoint, for example, will allow you to set punch in and out points for both the sequencer and the ADAT. For example, marker

points can be set for verse and chorus. ADAT will then autolocate to the correct position – and even begin recording if you want. dataMaster also provides for bi-directional synchronization and can address up to 16 ADAT's. When coupled with other MMC-compatible devices, dataMaster provides universal control for your studio.

### data9Pin – Sony 9 Pin Option

For professional video applications, an optional Sony 9 Pin adapter is available for receiving control commands from professional video editing systems. This compatibility, when coupled with its already extensive synchronization functions, allows dataMaster and ADAT to integrate seamlessly in an a video-oriented post-production facility.



# Interfaces/Patch Bays

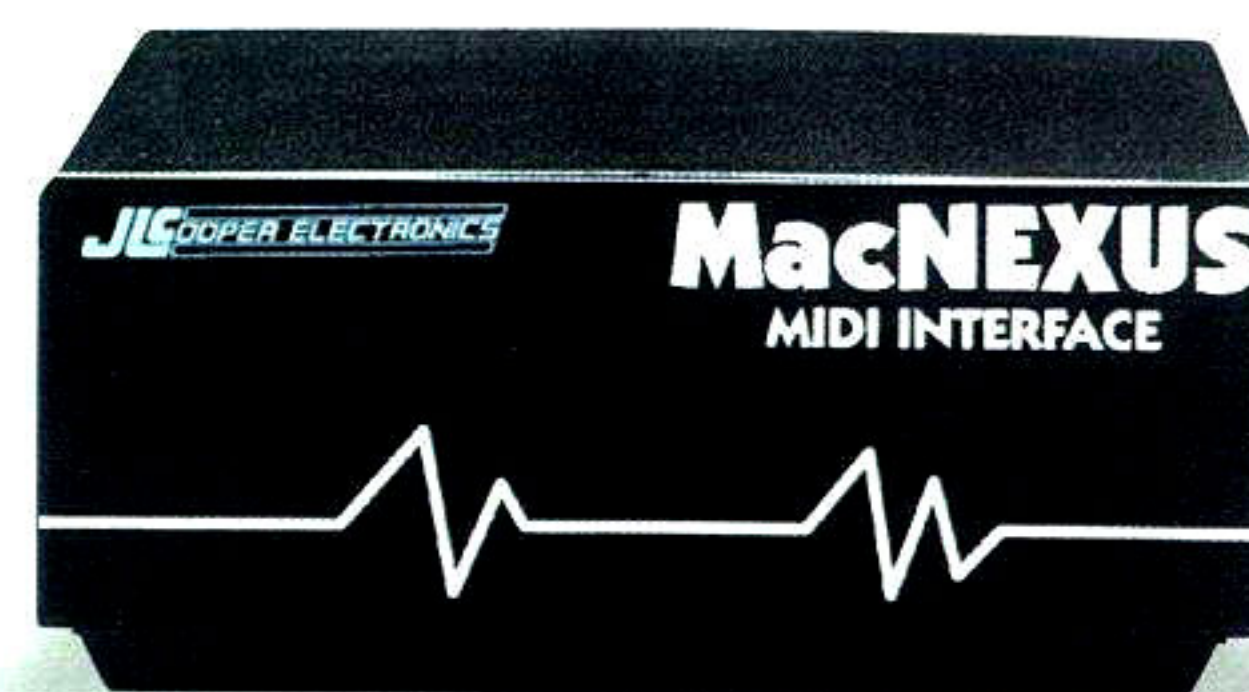
JLCooper created the MIDI accessory industry more than a decade ago. In fact, JLCooper was the first company to create a full line of MIDI patch bays and processors. Today, nearly every major touring band has some JLCooper MIDI patch bay or accessory. With JLCooper, you are dealing with the pros who put MIDI on the map.

## MACNEXUS MACINTOSH MIDI INTERFACE

MacNEXUS™ is a high quality, low-cost Macintosh MIDI interface with 1 MIDI input and 3 MIDI outputs. It's a compact interface that requires no external power supply. If more than 16 MIDI channels are needed, a second MacNEXUS can be attached. You can also add a NEXUS or NEXUS PLUS for more inputs, outputs and improved MIDI routing control. A PPS-2 or dataSYNC² can be added for synchronization.

### MACNEXUS FEATURES

- 1 MIDI Input and 3 MIDI Outputs
- Needs no Power Supply
- Quality Construction
- Mac Serial Cable Included
- 1 Space - ¼ Rack Width
- Optional Nexus Rack Tray



## SYNC•LINK MACINTOSH MIDI INTERFACE/SYNCHRONIZER

Sync•Link™ combines a high-quality dual port Macintosh MIDI Interface with JLCooper's world class SMPTE and Smart FSK synchronizer technology. Sync•Link reads and generates all SMPTE formats and Smart FSK Sync, and is PPS-2 compatible. It supports MIDI Time Code, Direct Time Lock, MIDI Clock with Song Position Pointer, and it is universally compatible with all popular Macintosh MIDI sequencers. It's perfect for computer-based digital audio recorders, desktop video and multimedia applications. Jam Sync provides SMPTE time code regeneration for tape duplication and timecode repair. Flywheeling provides protection against tape drop outs and Free Run mode lets Sync•Link act as the master SMPTE/MIDI synchronizer in a tapeless environment.



### SYNC•LINK FEATURES

- 2 MIDI Inputs and 2 MIDI Outputs
- SMPTE Jam Sync/Regeneration
- SMPTE Flywheeling
- SMPTE and SMART FSK Modes
- MIDI Port Activity LEDs
- Free Run Mode
- Sync•Link Software is Included
- Optional Nexus Rack Tray

## NEXUS MIDI SWITCHER

NEXUS™ is the affordable MIDI patch bay for anyone with more than one MIDI instrument. It virtually eliminates the tiresome chore of connecting and re-connecting cables to re-configure your MIDI system. Settings are made via smooth-action toggle switches, which give visual indication of the selected routing. Each of the 3 inputs can be switched to any of the 8 outputs. NEXUS also features activity LEDs for visual feedback.



### NEXUS FEATURES

- 3 MIDI Inputs and 8 MIDI Outputs
- Activity LEDs
- Front Panel MIDI Connectors
- Optional Nexus Rack Tray

## NEXUS PLUS MIDI MERGER

NEXUS PLUS™ allows merging so that 2 controllers can drive up to 8 devices simultaneously. It also turns a basic synthesizer into a powerful master controller. You can transpose any performance or divide your keyboard into 3 independent zones, each with a different MIDI channel. Two presets are provided for storing settings. The Channel Filter passes data only on a user specified channel and LEDs provide visual indication of input activity. NEXUS PLUS is a powerful, affordable, problem-solver for the project studio.



### NEXUS PLUS FEATURES

- 2 MIDI Inputs and 8 MIDI Outputs
- Merging and Transposition
- MIDI Channel Filter
- 3 Independent Zones (Splits)
- 2 User Memories
- Optional Nexus Rack Tray



## MSB PLUS REV2 8X8 MIDI PATCH BAY/PROCESSOR



### The Industry Standard

The MSB Plus REV2™ has a track record as the industry standard 8 by 8 MIDI Switch Box. It is known for its user-friendly interface and large, easy-to-read LED display. The MSB lets you configure your MIDI system quickly and easily.

### Inside the MSB Plus REV2

MSB Plus REV2 features merging, transpose and program change mapping. It is capable of storing 64 routing setups. Configurations can be recalled

from the front panel, via footswitch and remotely with MIDI program changes. Program change mapping allows you to send up to eight program change commands per preset.

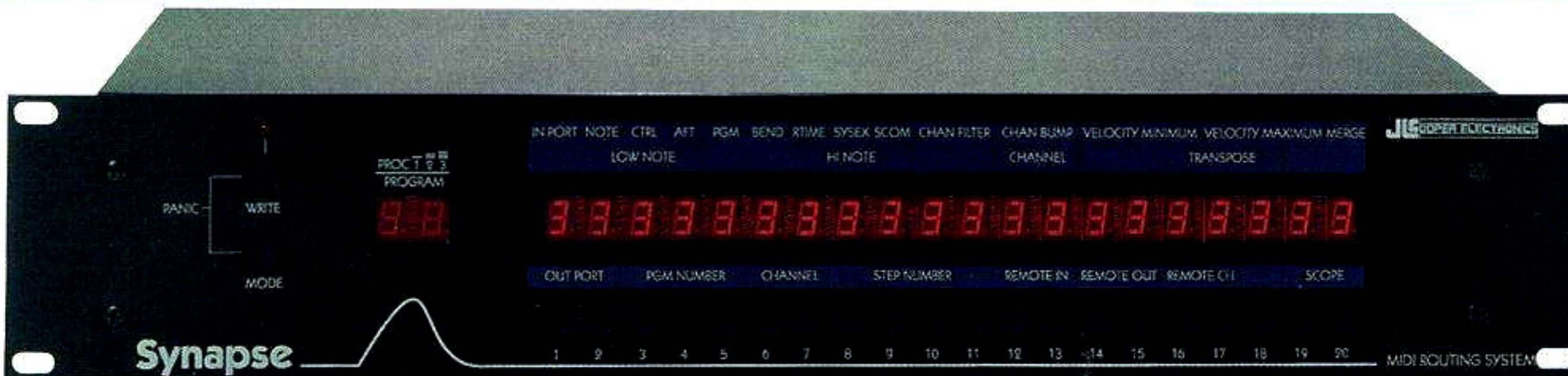
### Dual Processor Power

The MSB Plus has two sets of programmable MIDI processors that can be assigned to any combination of MIDI Inputs. These processors provide merging, transpose, channel bump and MIDI data filtering.

### MSB PLUS REV 2 FEATURES

- 64 User-definable Routing Configurations
- Merge any Two Inputs
- Footswitch Actuated Program Advance
- Large Easy-to-Read LED display
- Filter, Transpose, Channel Bump
- Panic Button

## SYNAPSE 16 IN X 20 OUT MIDI PATCH BAY/PROCESSOR



### Why Synapse is the Best!

Synapse™ is a feature-packed, fully programmable 16 input by 20 output MIDI Patch Bay/Processor for the professional musician or studio with a growing MIDI setup. Synapse turns any keyboard into a master controller. All of your MIDI equipment can be connected permanently and routed instantly. A bright, extra large display allows you to view status and routing at a distance. Each output has its own front panel indicator that shows which inputs are assigned to it. A button below each indicator allows you to instantly change routing.

### Merge Any Three Inputs

Synapse utilizes 3 independently programmable MIDI processors. Merge any 3 inputs to any combination of outputs. Merging lets you combine several MIDI controllers, accompany a sequencer or combine a keyboard with MIDI timing information.

### More Powerful Processing

Each processor also has a filter section that lets you selectively remove unwanted data. Synapse has four definable zones per processor, each with independent channel assignment and transposition.

You can scale velocity minimum/maximum values to expand or compress the dynamic range of any synthesizer.

### Centralized Control

The patch map allows 16 program change commands to be sent to any combination of outputs, on any MIDI channels. Synapse patches may be selected from the front panel or via MIDI program change commands. This allows one program change from any master instrument to configure MIDI routing and program changes for every device in your system.

### Computer Control

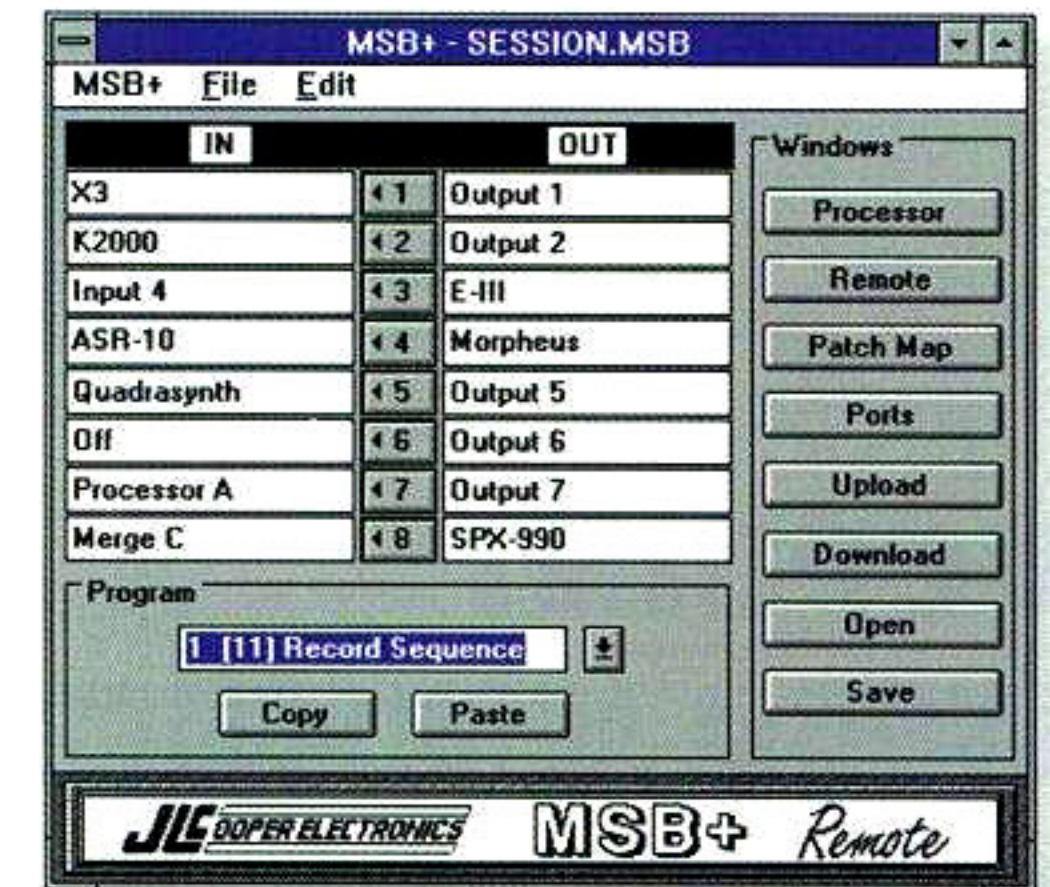
Synapse Remote software brings total system control to your computer desktop. All internal parameters are accessible from familiar windows and menus. Synapse Remote lets you assign names to inputs, outputs, and programs. You can copy and paste programs or individual processors and zones. MIDI routing selections are made by choosing your instrument names from convenient pop-up menus. You can send MIDI Program Changes and store your Synapse memory on disk for back up or future editing.

★★★★★ "The cream of the crop—offers exceptional value"  
— Electronic Musician

The transpose function will alter incoming MIDI notes over a five octave range and channel bump will re-assign the incoming data to any other channel. Filtering allows you to selectively remove any type of MIDI data.

### Mac, Windows and Atari ST Control

MSB Plus Remote software brings complete control to your computer. It lets you name inputs, outputs and programs. Routing selections are made by choosing instrument names from convenient pop up menus.

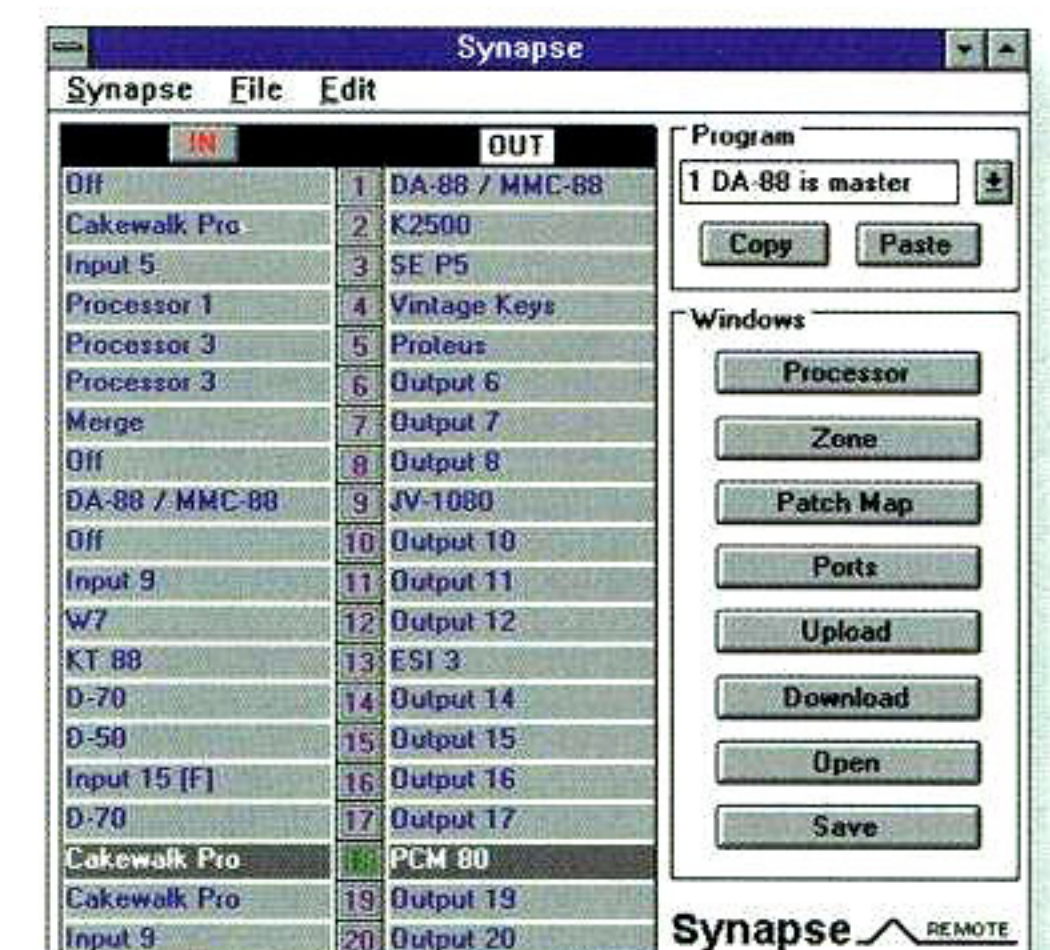


"Synapse definitely is a unit to look into if you need a powerful, flexible MIDI routing system"  
—Electronic Musician



### SYNAPSE FEATURES

- 16 MIDI Inputs and 20 MIDI Outputs
- Merge Any 3 Inputs per Preset
- 64 Memory Storage Locations
- 16 Patch Maps per Preset
- 12 Definable MIDI Zones (Splits)
- Velocity Scaling Setting per Preset
- 3 Channel Filters per Preset
- Expandable with Optional Cable





# CuePoint Autolocator



JLCooper's CuePoint lets you control ADAT, VTRs\*, traditional tape decks and other MIDI Machine Control-compatible recorders—with one universal remote.



## CUEPOINT UNIVERSAL AUTOLOCATOR

CuePoint can simultaneously control multiple recorders and is fully compatible with analog tape machines, the Alesis ADAT, Tascam DA-88, Fostex RD-8, Akai DR-4d, DR-8 and EMU DARwin. Hard-disk recorders and software programs which support MIDI Machine Control (MMC) can instantly respond to CuePoint's precision editing functions. CuePoint is the first device of its kind to support MMC, an exciting standard for universally controlling audio and video recorders. And CuePoint's transport and jog shuttle functions can emulate our CS-10<sup>2</sup> Control Station. Compact and affordable, CuePoint provides a professional solution to the demands of the modern recording studio.

### Indispensible Features

CuePoint gives you a variety of time-saving control features for your studio including: simultaneous transport control of multiple machines, track arming, automated transport functions, SMPTE-to-MTC conversion and a built-in SMPTE reader/generator. CuePoint's front panel features a large easy-to-read LED display which indicates SMPTE time (including quarter frame) or Bar, Beat and Tempo. The jog/shuttle wheel's positive action provides smooth control for precise editing.

### Control up to Four Devices

Up to four MMC-compatible machines can be controlled by CuePoint. Each can be individually enabled or disabled. This will allow you to, for example, have two recorders copying material while continuing to work with the rest of your recording system.

### Track Enable and Track Grouping

Track arming is available on up to four eight-track recorders, allowing you to control a full 32 tracks. Track status is indicated via a large front panel display. Each track features a pair of red and green LED's indicating record and monitor status. Tracks can be grouped and recalled with a single keypress. All Safe and All Input buttons are also featured.

### Quarter-Frame Accuracy

Unlike most autolocators, CuePoint is quarter-frame accurate. This lets you define punch in/out points and locate points with incredible precision. Complex edits can be rehearsed and executed all under the control of CuePoint. Up to 99 locate points can be captured on-the-fly or entered numerically via the front-panel key pad. All locate points can be recalled and edited as necessary.

### Autolocator Features

CuePoint includes a number of convenient operations for automating your studio. It lets you chase to a specific point by specifying a SMPTE time or a bar and beat. You can use these points to automatically punch in and out at specific times. CuePoint's innovative "Safe Segments" feature lets you utilize unused track areas while protecting previously recorded material.

### Synchronization Features

CuePoint can directly translate SMPTE into MIDI Time Code for controlling digital audio workstations or MIDI sequencers. The built-in SMPTE reader/generator can operate in Free Run mode providing the ability to generate SMPTE and MTC simultaneously—an invaluable feature when working in a tapeless studio.

### SMPTE or Bars and Beats

A user-definable tempo map allows you to work in bars and beats or SMPTE times. Tempos and locate points can be read from Standard MIDI Files and transferred to CuePoint via the new CuePoint remote software programs for Macintosh and Windows.

Track	Name	Group	Track Offset: (ADAT/ROS Only)
1 (1)	Percussion Right		---
2 (2)	Lead Vocal		---
3 (3)	Background Vocal 1		---
4 (4)	Background Vocal 2		---
5 (5)	Background Vocal 3		---
6 (6)	Bass Guitar		---
7 (7)	Sax		---
8 (8)	Percussion Left		---

### Expandability

CuePoint includes an expansion slot which can be fitted with a variety of optional control modules. These allow you to customize CuePoint to fit your particular studio environment. Modules include a dataCARD for synchronizing to ADAT without wasting an audio track. Cue9 provides complete RS422/9-Pin control of 2 additional VTRs or 9-Pin-compatible machines.

### CUEPOINT FEATURES:

- 99 Locate Points
- Quarter Frame Accurate
- SMPTE Reader/Generator with MTC
- Pre-Roll and Post-Roll Times
- Expansion Port
- Capture Cues in Real Time
- SMPTE or Bars and Beats
- ADAT Track and Machine Offsets
- ADAT Digital Routing Control
- Optional Datacard Module for ADAT
- \*New Optional CUE9 9-Pin Expansion Module for VTR control
- Optional Macintosh or Windows Remote Software



# Other JLCoooper Electronics Products\*

JLCoooper offers a full range of automation products designed to work with any console. We pioneered the development of affordable console automation. Our software is heralded for its ease of use, extensive features and proven performance.

## **V/DESK UNIVERSAL CONSOLE AUTOMATION SYSTEM**

V/DESK™ is JLCoooper's new flagship automation system. Retrofitting into any console, V/DESK™ offers a choice of VCAs and provides SMPTE locked fader, mute and signal processor automation. Clear, uncluttered graphics, a large timecode display and an intuitive user interface combine to put V/DESK years ahead of the competition. Features like accurate moving fader graphics, enhanced off-line editing, softgroups, auto-nulling and more, surpass the expectations of even the most discerning engineers.



## **MAGI CONSOLE AUTOMATION SYSTEMS**

MAGI M24 systems come in both universal and Alesis X2 versions. These proven systems are well suited to most any mixing application with virtually any console. A straightforward user interface with un-cluttered graphics make MAGI II easy to learn and use. And MAGI Pro 3.0 software for the Macintosh features color support and a new lower price, making MAGI a great addition to any studio.

## **SOFTMIX AUTOMATION SOFTWARE FOR THE SOUNDCRAFT SPIRIT AUTO**

JLCoooper's Softmix™ for the Soundcraft SPIRIT Auto™ brings state-of-the-art Macintosh console control within the reach of any studio. Softmix brings out the full capabilities of the SPIRIT Auto with power-user features like auto punch for seamless real time editing. It includes hit mode for spotting film or video cues and adds up to sixteen softgroups. The Auto Archive feature saves each mix to disk. Softmix surpasses ordinary music sequencers providing truly professional results in an affordable package.

## **PRO3700 AUTOMATION UPGRADE FOR TASCAM'S M-3700**

The PRO3700™ enhances Tascam's M-3700™ console. The M-3700 incorporates an internal automation system originally designed for Tascam by JLCoooper. With PRO3700, affordable automation is taken one step further. The PRO3700 interfaces a Macintosh to your M-3700 console to add new features including accurate moving fader graphics, off-line editing, 16 softgroups and more. The Macintosh increases mix memory. Disk operations are more than 25 times faster.

## **MS-3000 CONSOLE AUTOMATION SYSTEM FOR SONY MXP-3000**

JLCoooper's Macintosh-based MS-3000™ Console Automation System is dedicated to Sony's MXP-3000™ series consoles. The MS-3000™ features SMPTE-locked fader and mute automation with moving fader graphics and cue list off line editing. The JLCoooper MS-3000 is Sony's recommended replacement for older ADS automation. Features include fast locking SMPTE reader/generator, full cut, copy and paste off-line editing of mixes, auto-archiving and the ease of use provided in a specially designed and engineered system.

## **AVSIX AUDIO FOR VIDEO MIXER**

The AVSIX™ was designed with the user in mind, by integrating a powerful, high quality audio mixer, with a completely automated audio switching system. AVSIX accepts GPI and RS-422 and supports both GVG-100 and ESAM (I and II) protocols. At a price well within any budget, AVSIX provides a professional solution for virtually any automated audio for video mixing application.

## **AV8R AUDIO FOR VIDEO MIXER (RACK MODEL)**

The new AV8r™ is an eight channel, single space rack unit that offers all of the features and convenience of our AVSIX. It turns any mixer into an audio-follows-video mixer. Multiple units can be used in combination to put up to 32 audio channels completely under the control of your video editing system.

## **MMC/9-PIN MMC TO SONY 9-PIN INTERFACE**

Controls professional video tape recorders and analog tape machines from your MMC-compatible computer based sequencer or Alesis BRC remote. Like the CUE9, it converts 9-Pin sync, referenced to video, to SMPTE and MTC to slave your sequencer to video without requiring a SMPTE stripe on the video tape. *This is a must have product* for owners of BRC, Performer, Digital Performer, Vision, Studio Vision, Logic, Logic Audio, Cakewalk Professional, CueBase, CueBase Audio, or any other MMC-compatible sequencer, who are working with video.

## **MLA-1 / MLA-10 MIDI LINE AMPLIFIERS**

JLCoooper Electronics extends the capabilities of MIDI with the award-winning MLA-1™ and MLA-10™ MIDI Line Amplifiers. They are specifically designed to send MIDI data over long distances, with the ability to transmit and receive accurate MIDI data in excess of 1000 feet. Each MLA unit has four MIDI Ins and four MIDI Outs. They work over common twisted pair wiring or audio snake cable. The MLA's can easily be networked to multiple locations such as; from the main control room to a series of separate MIDI rooms in a recording studio, on the road or in an educational lab. The MLA-1 can be panel mounted for custom installations. The UL approved MLA-10 is a self powered unit designed to fit into a single rack space.

A 1991 AES "Best of Show" Award Winner - EQ

\*Contact JLCoooper Electronics for more extensive information on these products





12500 Beatrice Street  
Los Angeles, California 90066 USA  
(310) 306-4131, fax: (310) 822-2252

### JLCooper Electronics Software and Accessory Order Form

Software is normally available through you local dealer. It can also be ordered directly from JLCooper by either mail or phone. Send this form and your check or money order to JLCooper Electronics, Attn: Software Order Dept., 12500 Beatrice Street, Los Angeles, CA 90066. California residents please add 8.25% sales tax. For Visa and MasterCard orders call 310-306-4131 for faster service.

Qty.	Item	Price Each	Sub-Total
_____	CS-1 2.0 Update for Macintosh	\$39.95	_____
_____	CuePoint Remote Software for Macintosh	\$69.95	_____
_____	CuePoint Remote Software for Windows	\$69.95	_____
_____	FaderMaster Remote Software for Macintosh	\$29.95	_____
_____	FaderMaster Remote Software for Windows	\$29.95	_____
_____	FaderMaster Remote Software for Atari ST	\$29.95	_____
_____	FaderMaster Pro Remote Software for Macintosh	\$49.95	_____
_____	FaderMaster Pro Remote Software for Windows	\$49.95	_____
_____	Media Control Station 2.0 Update	\$29.95	_____
_____	MSB Plus Remote Software for Macintosh	\$29.95	_____
_____	MSB Plus Remote Software for Windows	\$29.95	_____
_____	MSB Plus Remote Software for Atari ST	\$29.95	_____
_____	PPS-2 Remote Software for Macintosh	\$14.95	_____
_____	PPS-2 Remote Software for Windows	\$14.95	_____
_____	PPS-2 Remote Software for Atari ST	\$14.95	_____
_____	PPS-2 Plus Option	\$49.95	_____
_____	PPS-100Q Software for Macintosh	\$49.95	_____
_____	PPS-100Q Software for Windows	\$49.95	_____
_____	PPS-100Q Software for Atari	\$49.95	_____
_____	Synapse Remote Software for Macintosh	\$69.95	_____
_____	Synapse Remote Software for Windows	\$69.95	_____
_____	Synapse Remote Software for Atari ST	\$69.95	_____

Your Name: \_\_\_\_\_

Your Address: \_\_\_\_\_

City: \_\_\_\_\_

State: \_\_\_\_\_ Zip: \_\_\_\_\_ Phone: (\_\_\_\_) \_\_\_\_\_

Computer Type: \_\_\_\_\_

Form of Payment: \_\_\_\_\_

Total Enclosed: \_\_\_\_\_

Card Number: \_\_\_\_\_

Expiration: \_\_\_\_\_

*All NEXUS products, dataSYNC<sup>2</sup>, Sync•Link and PPS-2 are compatible with our optional NEXUS Rack Tray (19" Std.). Prices and Specifications subject to change without notice. AVSIX, AV8r, CS-1 Control Station, CS-10<sup>2</sup> Professional Control Station, CS-Edit, CuePoint, CUE9, dataSYNC<sup>2</sup>, dataCARD, dataMaster, FaderMaster, FaderMaster Professional, MAGI M24, MAGI Pro, MacNexus, Media Control Station, MLA-1, MLA-10, MMC/9PIN, MS-3000, MixMaster, MSB Plus REV2, Nexus, Nexus Plus, Softmix, Synapse, PRO3700, PPS-2, PPS-100, Sync•Link and V/DESK are trademarks of JLCooper Electronics. All other brand and product names are trademarks of their respective holders. © 1995 JLCooper Electronics. All Rights Reserved.*